

852A

**SUBMITTAL TO THE BOARD OF SUPERVISORS
COUNTY OF RIVERSIDE, STATE OF CALIFORNIA**



FROM: County Counsel

SUBMITTAL DATE: March 28, 2005

SUBJECT: Ordinance No. 348.4284

RECOMMENDED MOTION: That the Board of Supervisors adopt Ordinance No. 348.4284 amending the zoning in the Lake Mathews District shown on Map No. 36.053 Change of Zone Case No. 6925.

BACKGROUND: Change of Zone Case No. 6925 was approved by the Board of Supervisors on February 15, 2005.

Katherine A. Lind
KATHERINE A. LIND
Deputy County Counsel

C.E.O. RECOMMENDATION: APPROVE

Lisa Brandl

County Executive Office Signature

Policy
 Policy

Consent
 Consent

Department Recommendation:
Per Executive Office:

Prev. Agn. ref.

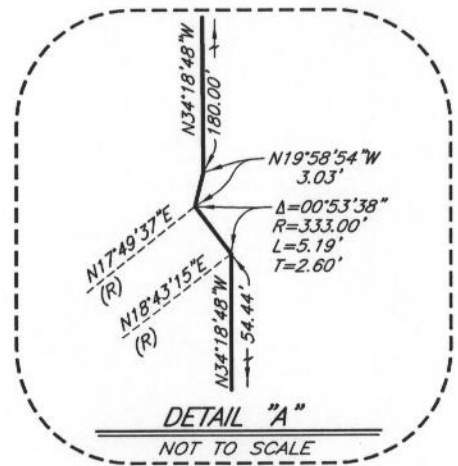
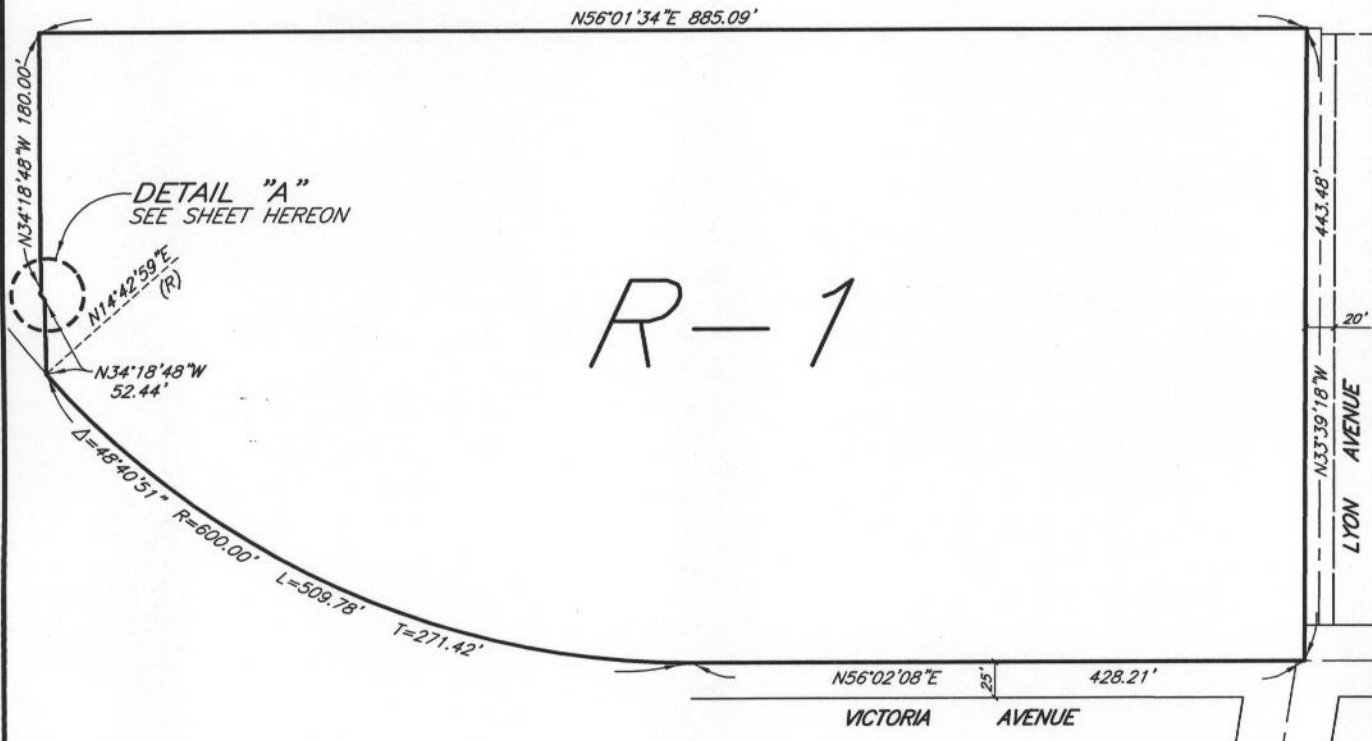
Dist. 1

AGENDA NO.

2.8

COUNTY OF RIVERSIDE
02 APR -2 PM 11:29
OFFICE EXECUTIVE

002 APR -2 PM 11:31
RECEIVED RIVERSIDE COUNTY



LEGEND

R-1 ONE-FAMILY DWELLINGS

MAP NO. 36.053
**CHANGE OF OFFICIAL ZONING PLAN
 LAKE MATHEWS
 DISTRICT**

CHANGE OF ZONE CASE NO. 6925
 AMENDING ORDINANCE NO. 348
 ADOPTED BY ORDINANCE NO. 348.4284
 APRIL 12, 2005
 RIVERSIDE COUNTY BOARD OF SUPERVISORS

