

SUBMITTAL TO THE BOARD OF SUPERVISORS  
COUNTY OF RIVERSIDE, STATE OF CALIFORNIA

852A



FROM: County Counsel

SUBMITTAL DATE: March 29, 2005

SUBJECT: Ordinance No. 348.4288

**RECOMMENDED MOTION:** That the Board of Supervisors adopt Ordinance No. 348.4288 amending the zoning in the Prado/Mira Loma District shown on Map No. 38.105 Change of Zone Case No. 6698.

**BACKGROUND:** Change of Zone Case No. 6698 was approved by the Board of Supervisors on August 19, 2003.

*Katherine A. Lind*  
KATHERINE A. LIND  
Deputy County Counsel

C.E.O. RECOMMENDATION:

**APPROVE**

*Lisa Brandl*

County Executive Office Signature

Policy  
 Policy

Consent  
 Consent

Department Recommendation:  
Per Executive Office:

COUNTY OF RIVERSIDE  
02 APR - 2 5:15:28  
OFFICE EXECUTIVE  
RECEIVED RIVERSIDE COUNTY

Prev. Agn. ref.

Dist. 2

AGENDA NO.

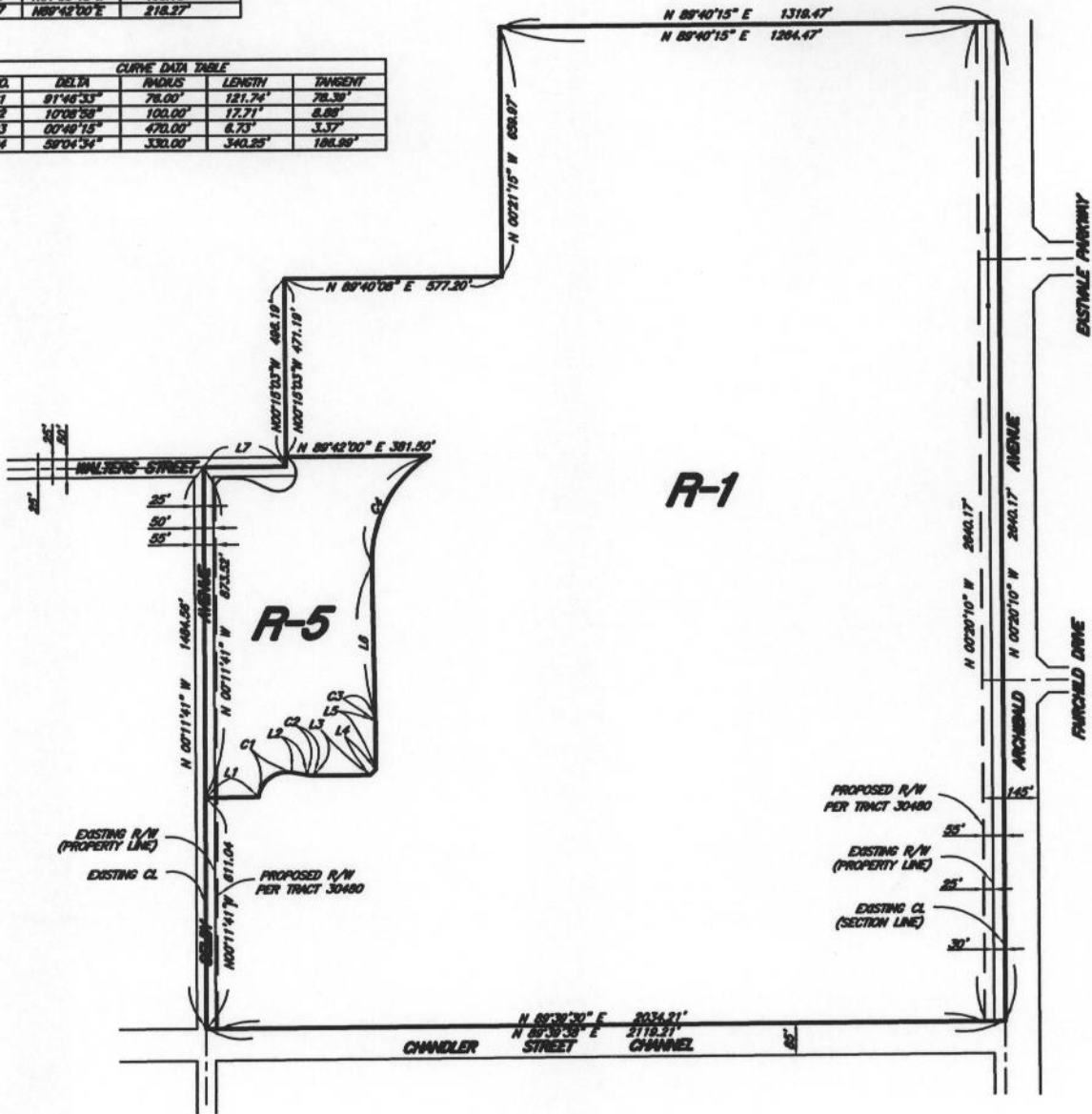
2.11



LINE DATA TABLE		
NO.	BEARING	LENGTH
L1	N89°14'33"E	140.78'
L2	N89°11'32"W	41.18'
L3	N89°39'30"E	148.22'
L4	N46°39'00"E	20.52'
L5	N02°20'30"W	128.82'
L6	N01°09'45"W	408.18'
L7	N89°42'00"E	218.27'

CURVE DATA TABLE			
NO.	DELTA	RADIUS	TANGENT
C1	91°45'33"	78.00'	78.30'
C2	10°08'58"	100.00'	8.88'
C3	00°48'15"	470.00'	8.73'
C4	89°04'34"	330.00'	340.25'

SEC 34 T2S R7W S.B.B. & M



**LEGEND:**

- R-1 ONE-FAMILY DWELLINGS
- R-5 OPEN AREA COMBINING ZONE-RESIDENTIAL DEVELOPMENTS

- A.P.N.**
- 144-060-008
  - 144-060-009
  - 144-110-009
  - 144-110-010
  - 144-110-011
  - 144-110-012
  - 144-110-013
  - 144-110-014
  - 144-110-015
  - 144-110-016
  - 144-110-017
  - 144-110-018
  - 144-110-019
  - 144-110-020
  - 144-110-021
  - 144-130-001
  - 144-130-002

**MAP NO. 38105**  
**CHANGE OF OFFICIAL ZONING PLAN**  
**FRADO-MIRA LOMA DISTRICT**  
 CHANGE OF ZONE CASE NO. 06698  
 AMENDING ORDINANCE NO. 348  
 ADOPTED BY ORDINANCE NO. 348.4288  
 APRIL 12, 2005  
 RIVERSIDE COUNTY BOARD OF SUPERVISORS

