

SUBMITTAL TO THE BOARD OF SUPERVISORS
COUNTY OF RIVERSIDE, STATE OF CALIFORNIA

232A



FROM: County Counsel

SUBMITTAL DATE: December 20, 2005

SUBJECT: Ordinance No. 348.4347

RECOMMENDED MOTION: That the Board of Supervisors adopt Ordinance No. 348.4347 amending the zoning in the Rancho California Area shown on Map No. 2.2146 Change of Zone Case No. 6850.

BACKGROUND: Change of Zone Case No. 6850 was approved by the Board of Supervisors on November 15, 2005.

MINH TRAN
Deputy County Counsel

C.E.O. RECOMMENDATION:

APPROVE

County Executive Office Signature

Policy
 Policy

Consent
 Consent

Department Recommendation:
Per Executive Office:

Prev. Agn. ref.

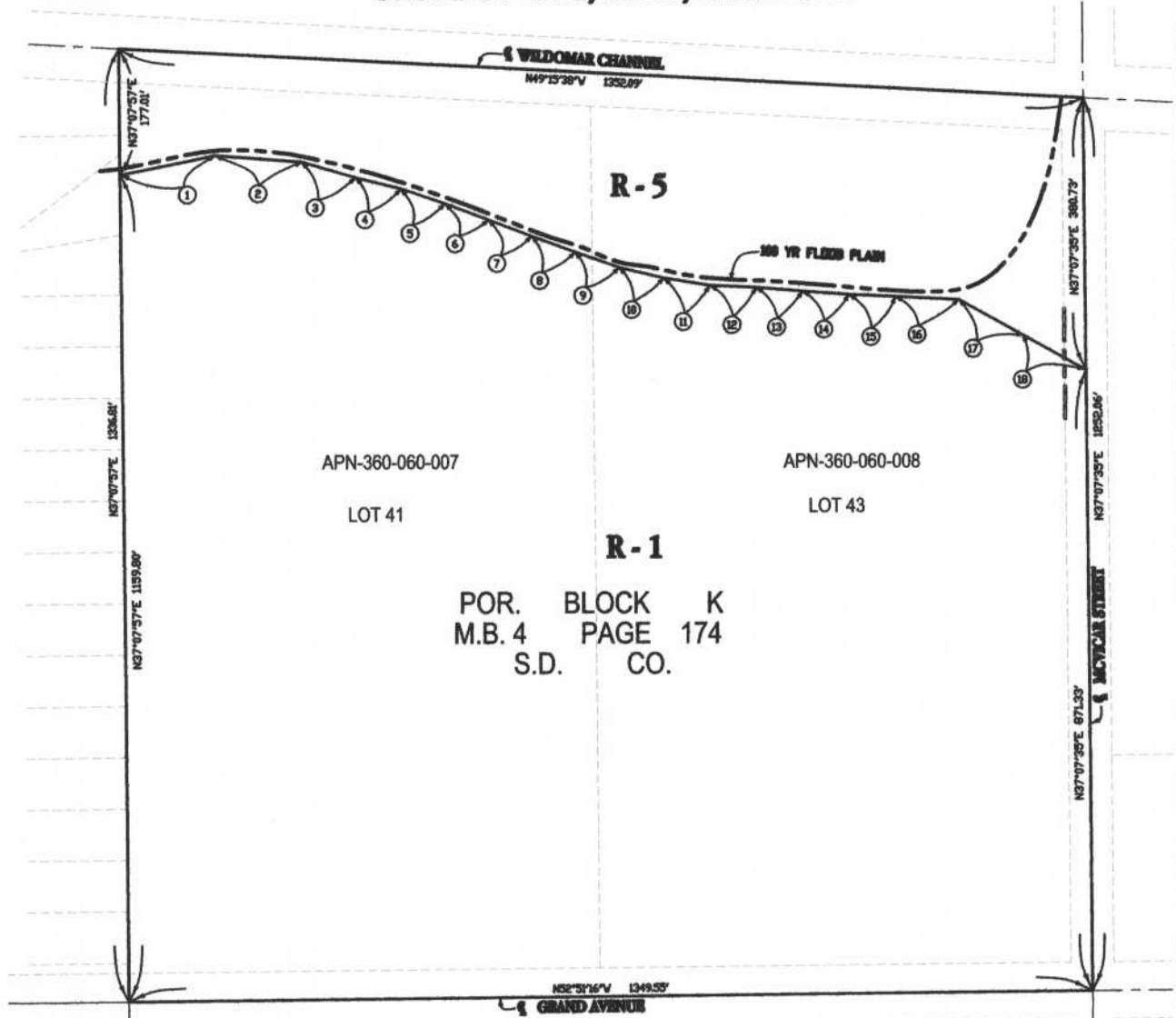
Dist. 1

AGENDA NO.

2.10

RANCHO CALIFORNIA

SEC. 2 OF T.7S, R.4W, S.B.B. & M

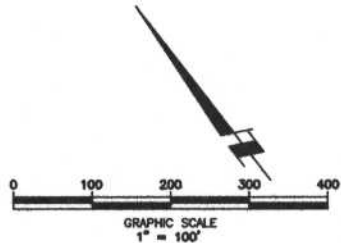


NO.	DELTA/BEARING	RADIUS	LENGTH	TANGENT
1	N63°36'34"W	--	136.65'	--
2	N47°56'54"W	--	121.66'	--
3	N36°06'14"W	--	77.95'	--
4	N37°56'38"W	--	65.37'	--
5	N33°28'16"W	--	65.03'	--
6	N31°50'12"W	--	65.00'	--
7	N31°50'12"W	--	65.00'	--
8	N31°50'12"W	--	65.00'	--
9	N33°12'57"W	--	65.28'	--
10	N38°47'40"W	--	63.97'	--
11	N42°55'57"W	--	65.98'	--
12	N49°39'32"W	--	65.03'	--
13	N47°53'47"W	--	65.00'	--
14	N47°53'47"W	--	65.00'	--
15	N46°32'10"W	--	65.03'	--
16	N46°28'50"W	--	66.23'	--
17	N23°23'33"W	--	102.31'	--
18	N23°23'33"W	--	100.78'	--

LEGEND

R-1 ONE-FAMILY DWELLINGS

R-5 OPEN AREA COMBINING ZONE RESIDENTIAL DEVELOPMENTS



MAP NO. 2.2146
CHANGE OF OFFICIAL ZONING PLAN
 AMENDING
 MAP NO. 2 ORDINANCE NO. 348
 CHANGE OF ZONE CASE NO. 6850
 ADOPTED BY ORDINANCE NO. 348.4347
 JANUARY 10, 2005
 RIVERSIDE COUNTY BOARD OF SUPERVISORS

APN 380-060-007
APN 380-060-008