

652A  
SUBMITTAL TO THE BOARD OF SUPERVISORS  
COUNTY OF RIVERSIDE, STATE OF CALIFORNIA



FROM: County Counsel

SUBMITTAL DATE: January 31, 2006

SUBJECT: Ordinance No. 348.4366

**RECOMMENDED MOTION:** That the Board of Supervisors adopt Ordinance No. 348.4366 amending the zoning in the Winchester Area shown on Map No. 2.2155 Change of Zone Case No. 7123.

**BACKGROUND:** Change of Zone Case No. 7123 was approved by the Board of Supervisors on August 9, 2005.

MINH TRAN  
Deputy County Counsel

C.E.O. RECOMMENDATION:

Policy  
 Policy

Consent  
 Consent

Department Recommendation:  
Per Executive Office:

County Executive Office Signature

APPROVE

Prev. Agn. ref.

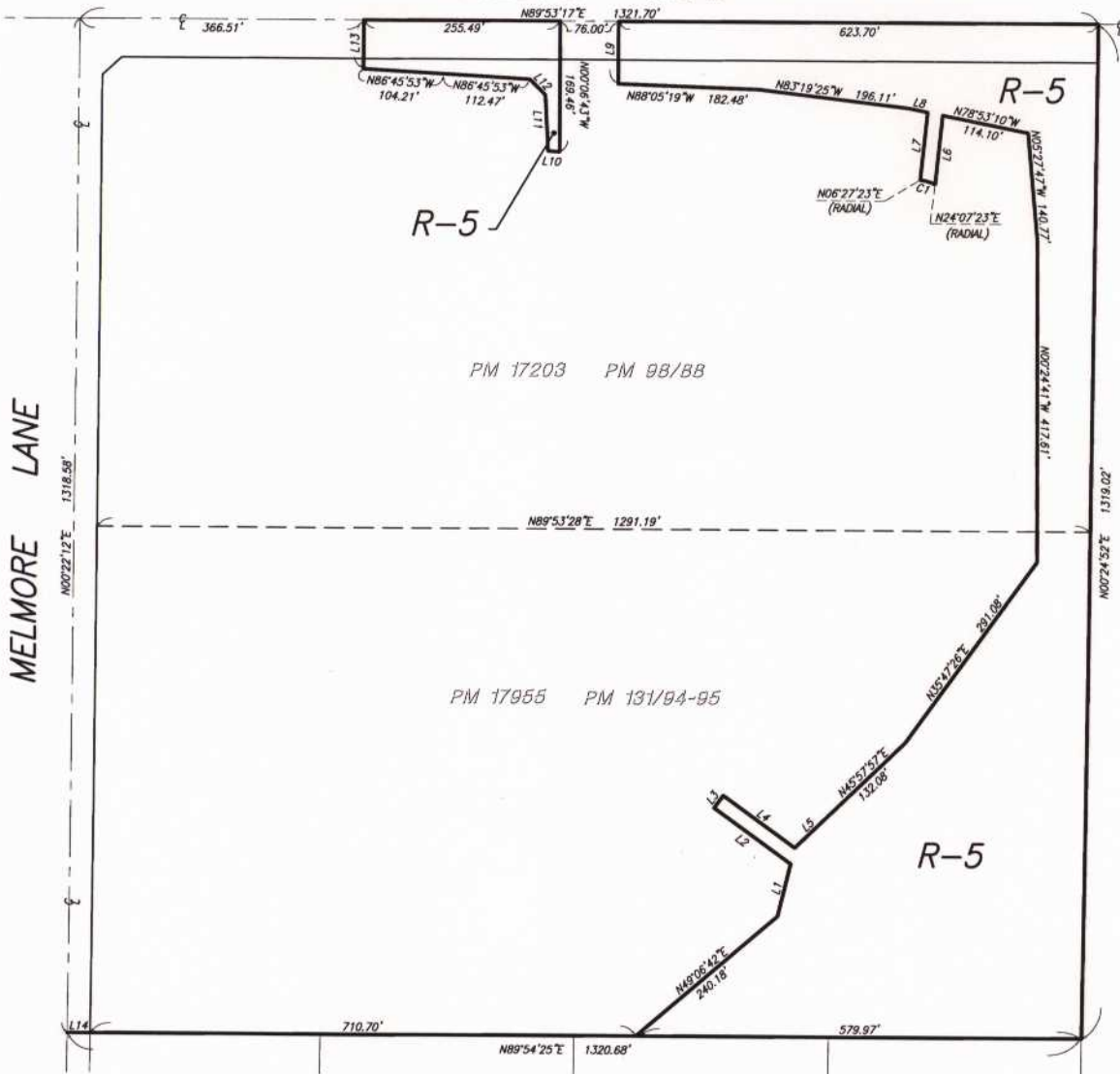
Dist. Third

AGENDA NO.

2.11



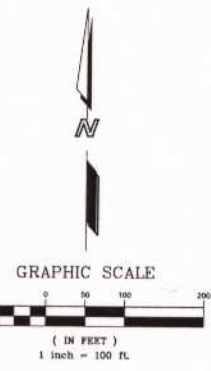
WINCHESTER AREA  
 SEC 12, T. 6S, R. 3W, S.B.M.  
 HOLLAND ROAD



LINE	LENGTH	BEARING
L1	70.29'	N113°24'37"E
L2	123.24'	N82°12'34"W
L3	20.00'	N32°42'26"E
L4	115.00'	N62°12'54"W
L5	66.04'	N42°32'52"E
L6	89.57'	N02°56'31"E
L7	88.09'	N02°55'31"E
L8	24.82'	N78°53'10"W
L9	80.98'	N02°06'43"W
L10	14.88'	N86°21'22"W
L11	72.69'	N03°22'58"W
L12	28.53'	N45°06'43"W
L13	63.09'	N02°06'43"W
L14	30.00'	N89°54'25"E

CURVE	LENGTH	RADIUS	DELTA
C1	20.35'	66.00'	17°40'00"

**LEGEND**  
 [R-5] OPEN AREA COMBINING ZONE  
 RESIDENTIAL DEVELOPMENT



**MAP NO. 2.2155**  
**CHANGE OF OFFICIAL ZONING PLAN**  
**AMENDING**  
**MAP NO. 2 ORDINANCE NO. 348**

CHANGE OF ZONE CASE NO. 7123  
 ADOPTED BY ORDINANCE NO. 348.4366,  
 FEBRUARY 28, 2006  
 RIVERSIDE COUNTY BOARD OF SUPERVISORS