

SUBMITTAL TO THE BOARD OF SUPERVISORS
COUNTY OF RIVERSIDE, STATE OF CALIFORNIA

683A



FROM: County Counsel
SUBJECT: Ordinance No. 348.4370

SUBMITTAL DATE: February 2, 2006

RECOMMENDED MOTION: That the Board of Supervisors adopt Ordinance No. 348.4370 amending the zoning in the Alberhill Area shown on Map No. 2.2158 Change of Zone Case No. 7250.

BACKGROUND: Change of Zone Case No. 7250 was approved by the Board of Supervisors on February 28, 2006.

MINH TRAN
Deputy County Counsel

C.E.O. RECOMMENDATION:

Policy
 Policy

APPROVE

County Executive Office Signature

Consent
 Consent

Department Recommendation:
Per Executive Office:

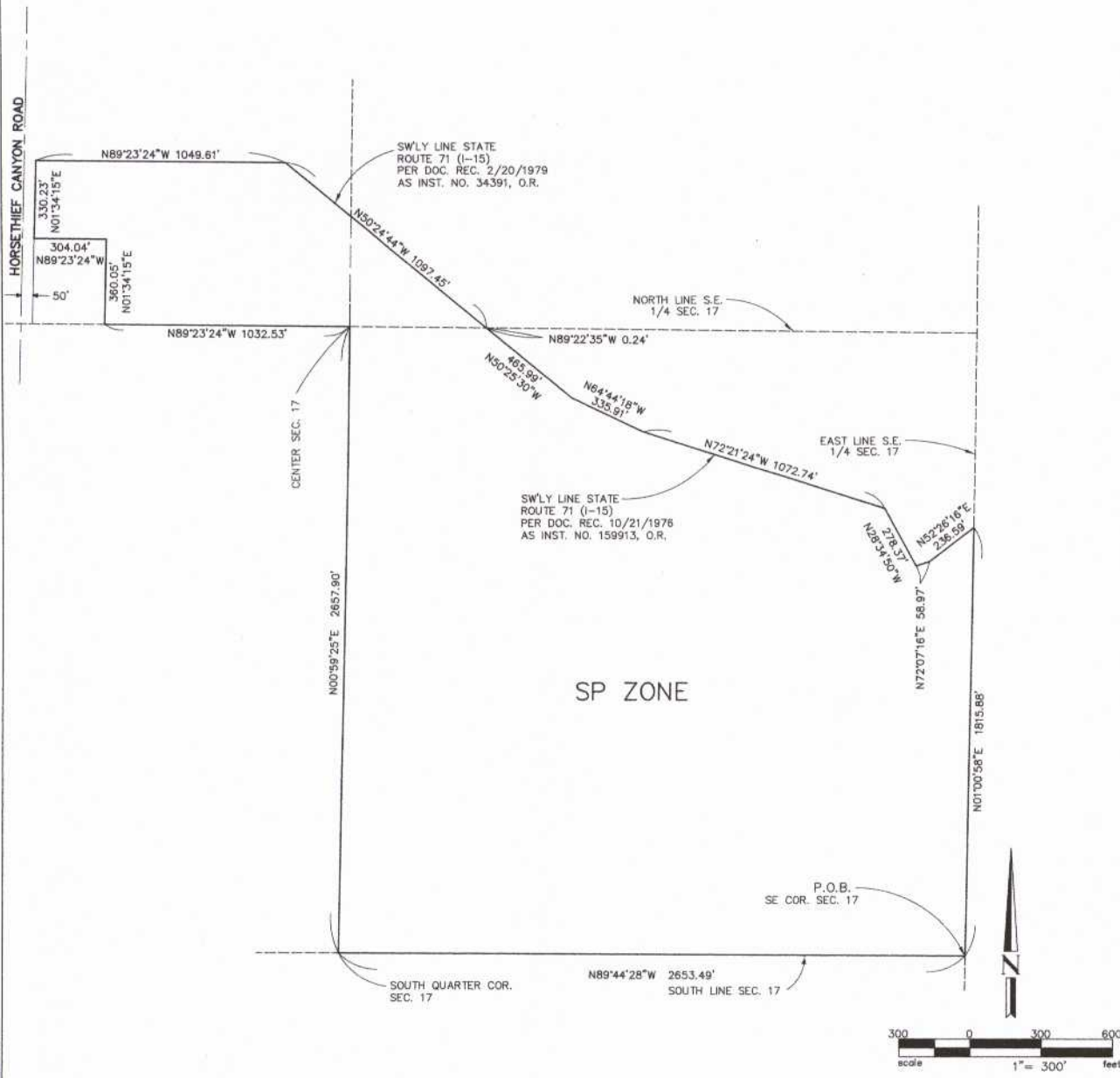
Prev. Agn. ref.

Dist. First

AGENDA NO.

2.14

ALBERHILL AREA
 SEC. 17, T. 5 S., R. 5 W., S. B. M.



MAP NO. 2.2158

CHANGE OF OFFICIAL ZONING PLAN
 AMENDING MAP NO. 2
 ORDINANCE NO. 348

CHANGE OF ZONE CASE NO. 07250
 ADOPTED BY ORDINANCE NO. 348.4370
 ADOPTION DATE FEBRUARY 28, 2006
 RIVERSIDE COUNTY BOARD OF SUPERVISORS

LEGEND

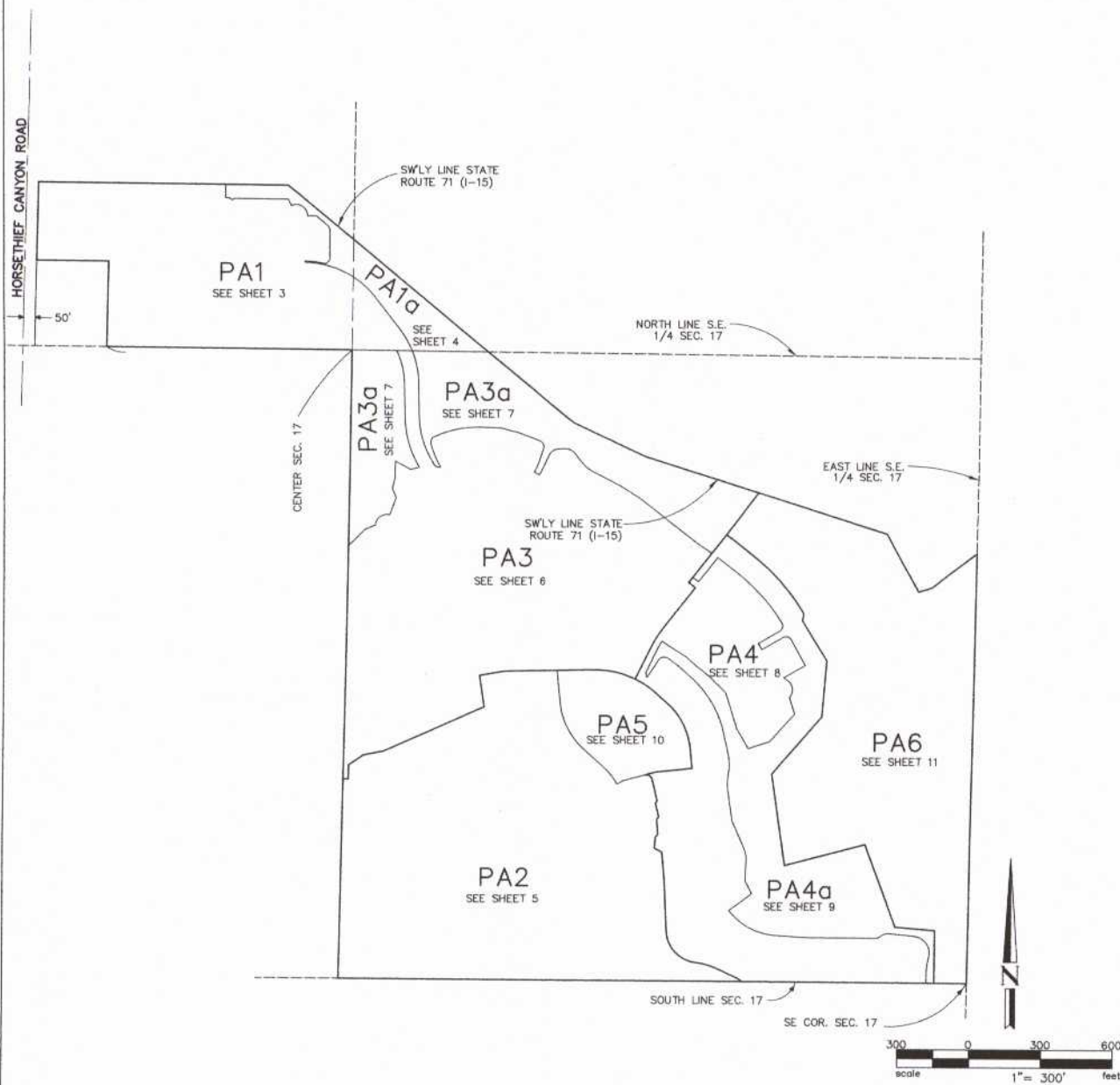
SP ZONE SPECIFIC PLAN (SP 333)

APN 391-140-019
 APN 391-100-025
 APN 391-480-019
 APN 391-140-006

FEB 02 2006

ALBERHILL AREA
 SEC. 17, T. 5 S., R. 5 W., S. B. M.

SHEET 2 OF 11



MAP NO. 2.2158
 CHANGE OF OFFICIAL ZONING PLAN
 AMENDING MAP NO. 2
 ORDINANCE NO. 348

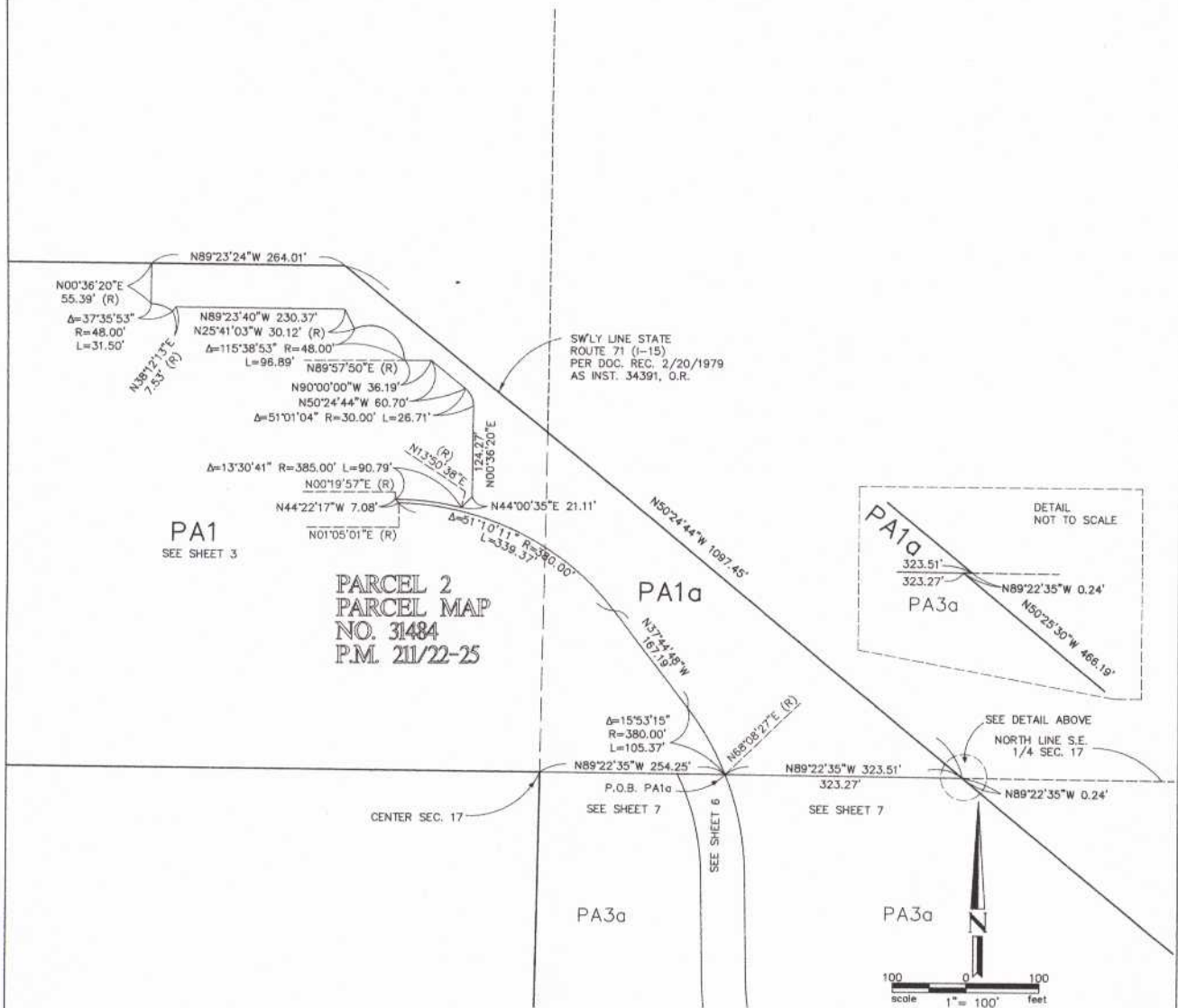
LEGEND
 SP ZONE SPECIFIC PLAN (SP 333)

CHANGE OF ZONE CASE NO. 07250
 ADOPTED BY ORDINANCE NO. 348.4370
 ADOPTION DATE FEBRUARY 28, 2006
 RIVERSIDE COUNTY BOARD OF SUPERVISORS

APN 391-140-019
 APN 391-100-025
 APN 391-480-019
 APN 391-140-006

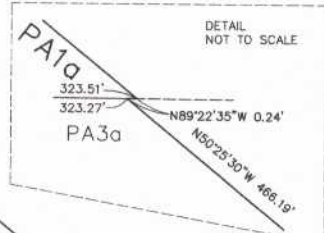
FEB 02 2006

ALBERHILL AREA
 SEC. 17, T. 5 S., R. 5 W., S. B. M.

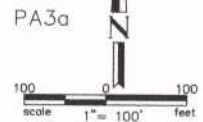


PA1
 SEE SHEET 3

PARCEL 2
 PARCEL MAP
 NO. 31484
 P.M. 211/22-25



SEE DETAIL ABOVE
 NORTH LINE S.E.
 1/4 SEC. 17



MAP NO. 2.2158

CHANGE OF OFFICIAL ZONING PLAN
 AMENDING MAP NO. 2
 ORDINANCE NO. 348

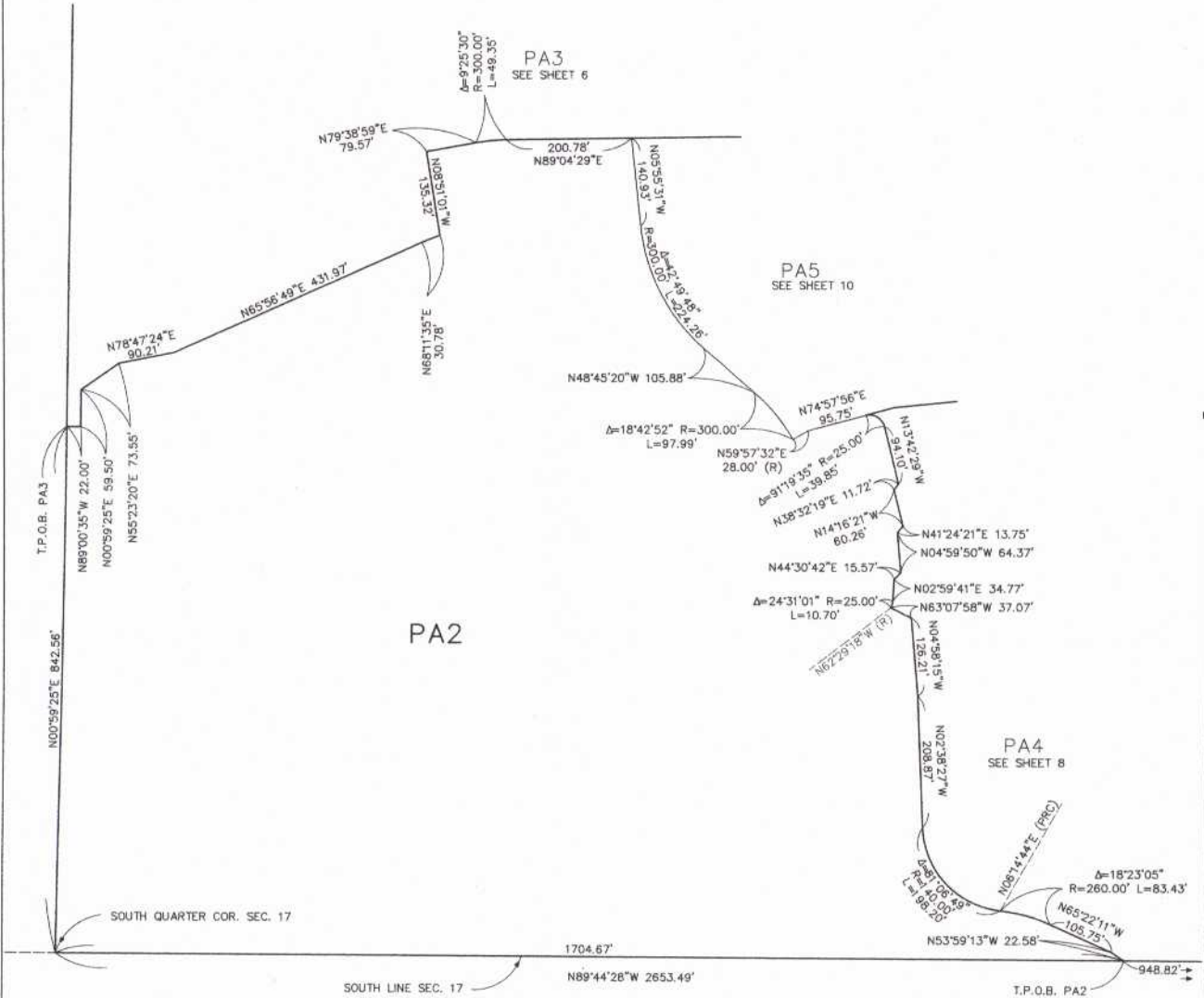
CHANGE OF ZONE CASE NO. 07250
 ADOPTED BY ORDINANCE NO. 348.4370
 ADOPTION DATE FEBRUARY 28, 2006
 RIVERSIDE COUNTY BOARD OF SUPERVISORS

LEGEND
 SP ZONE SPECIFIC PLAN (SP 333)

APN 391-140-019
 APN 391-100-025
 APN 391-480-019
 APN 391-140-006

FEB 02 2006

ALBERHILL AREA
 SEC. 17, T. 5 S., R. 5 W., S. B. M.



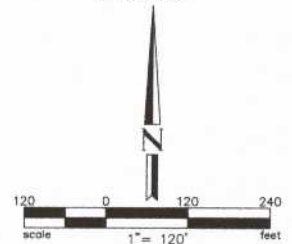
MAP NO. 2.2158

CHANGE OF OFFICIAL ZONING PLAN
 AMENDING MAP NO. 2
 ORDINANCE NO. 348

CHANGE OF ZONE CASE NO. 07250
 ADOPTED BY ORDINANCE NO. 348.4370
 ADOPTION DATE FEBRUARY 28, 2006
 RIVERSIDE COUNTY BOARD OF SUPERVISORS

LEGEND

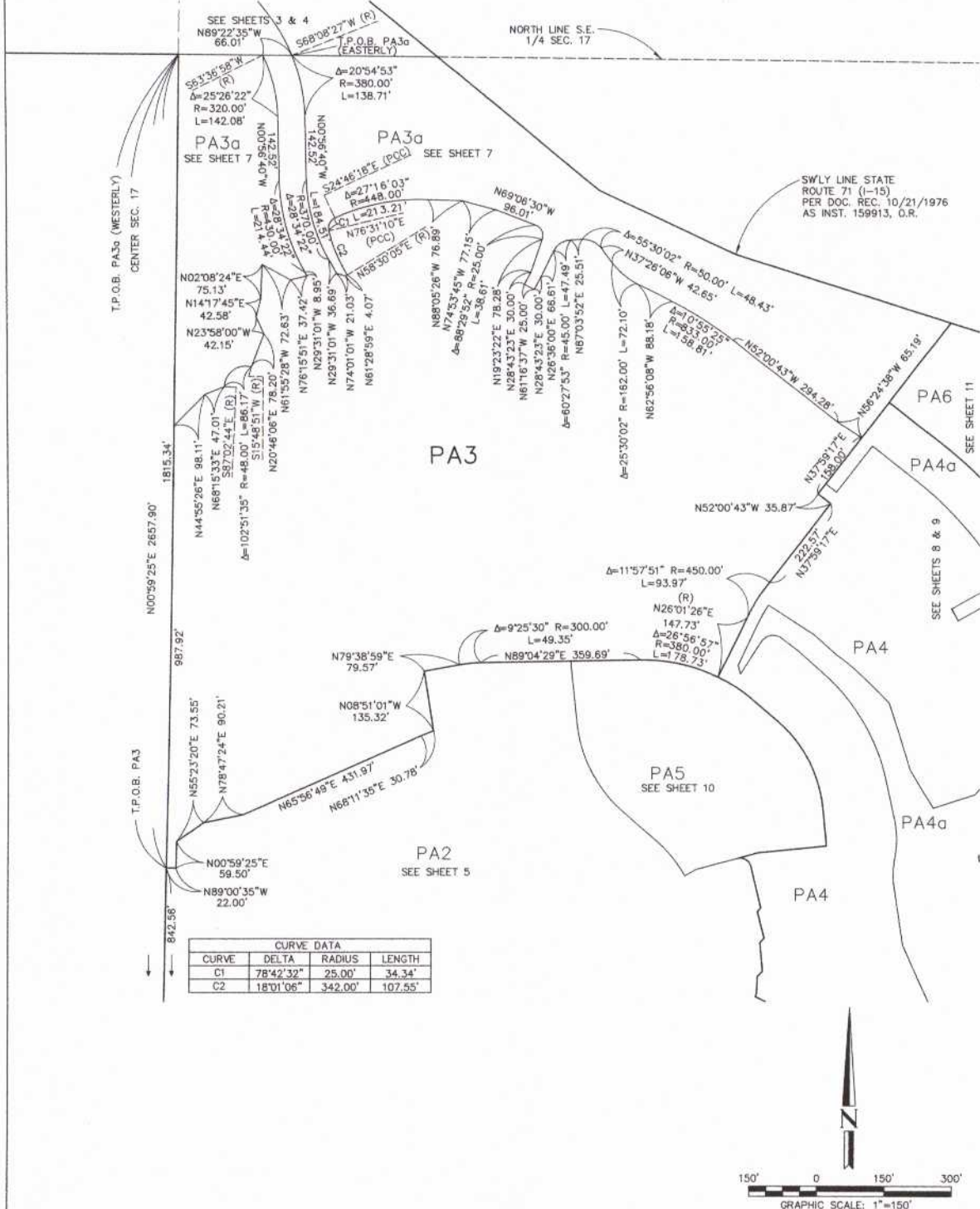
SP ZONE SPECIFIC PLAN (SP 333)



APN 391-140-019
 APN 391-100-025
 APN 391-480-019
 APN 391-140-006

FEB 02 2006

ALBERHILL AREA
 SEC. 17, T. 5 S., R. 5 W., S. B. M.



MAP NO. 2.2158

CHANGE OF OFFICIAL ZONING PLAN
 AMENDING MAP NO. 2
 ORDINANCE NO. 348

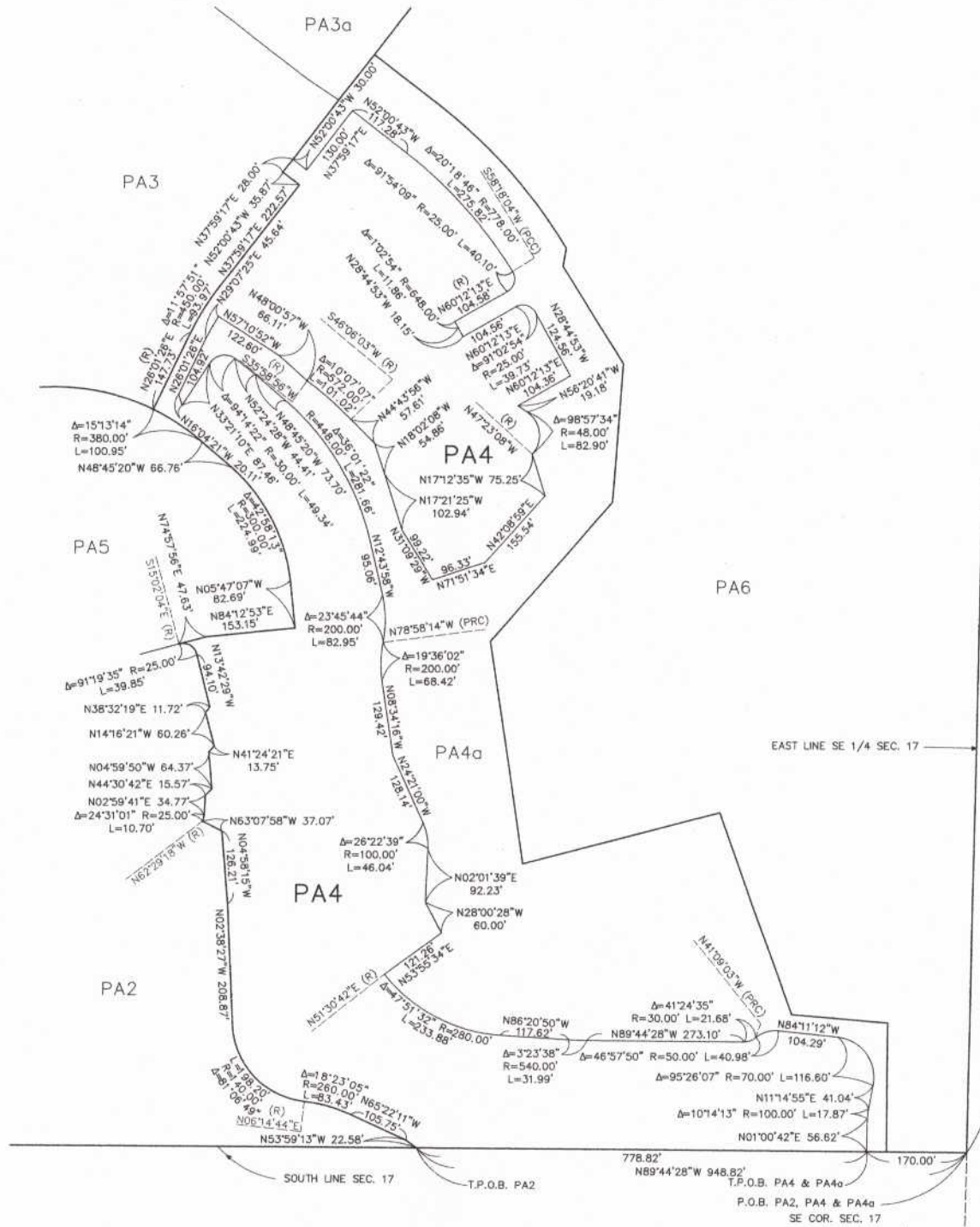
LEGEND
 SP ZONE SPECIFIC PLAN (SP 333)

CHANGE OF ZONE CASE NO. 07250
 ADOPTED BY ORDINANCE NO. 348.4370
 ADOPTION DATE FEBRUARY 28, 2006
 RIVERSIDE COUNTY BOARD OF SUPERVISORS

FEB 02 2006

APN 391-140-019
 APN 391-100-025
 APN 391-480-019
 APN 391-140-006

ALBERHILL AREA
 SEC. 17, T. 5 S., R. 5 W., S. B. M.



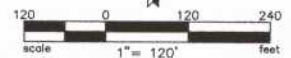
MAP NO. 2.2158

CHANGE OF OFFICIAL ZONING PLAN
 AMENDING MAP NO. 2
 ORDINANCE NO. 348

CHANGE OF ZONE CASE NO. 07250
 ADOPTED BY ORDINANCE NO. 348.4370
 ADOPTION DATE FEBRUARY 28, 2006
 RIVERSIDE COUNTY BOARD OF SUPERVISORS

LEGEND

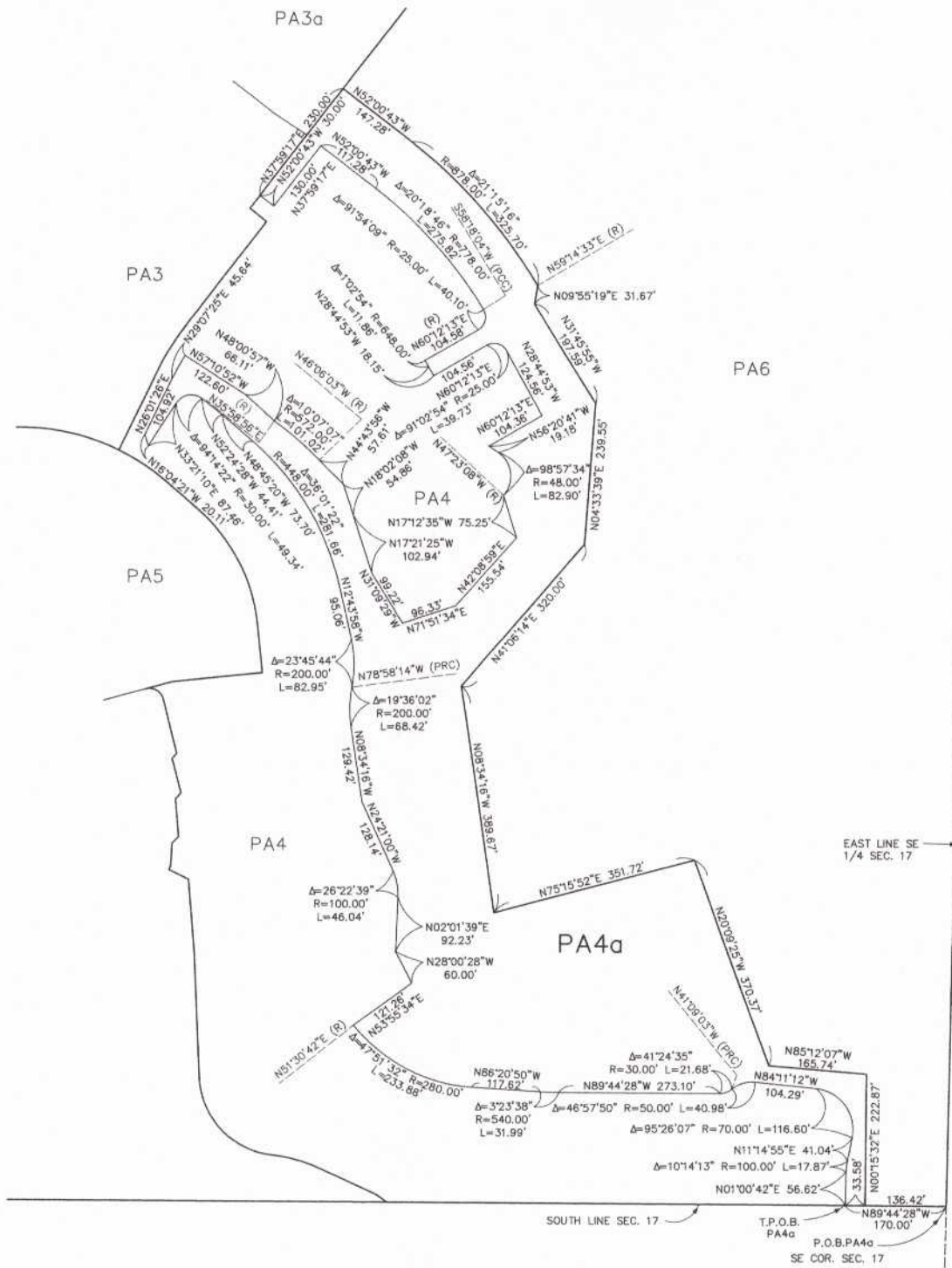
SP ZONE SPECIFIC PLAN (SP. 333)



FEB 02 2006

APN 391-140-019
 APN 391-100-025
 APN 391-480-019
 APN 391-140-006

ALBERHILL AREA
 SEC. 17, T. 5 S., R. 5 W., S. B. M.



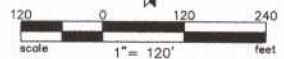
MAP NO. 2.2158

CHANGE OF OFFICIAL ZONING PLAN
 AMENDING MAP NO. 2
 ORDINANCE NO. 348

CHANGE OF ZONE CASE NO. 07250
 ADOPTED BY ORDINANCE NO. 348.4370
 ADOPTION DATE FEBRUARY 28, 2006
 RIVERSIDE COUNTY BOARD OF SUPERVISORS

LEGEND

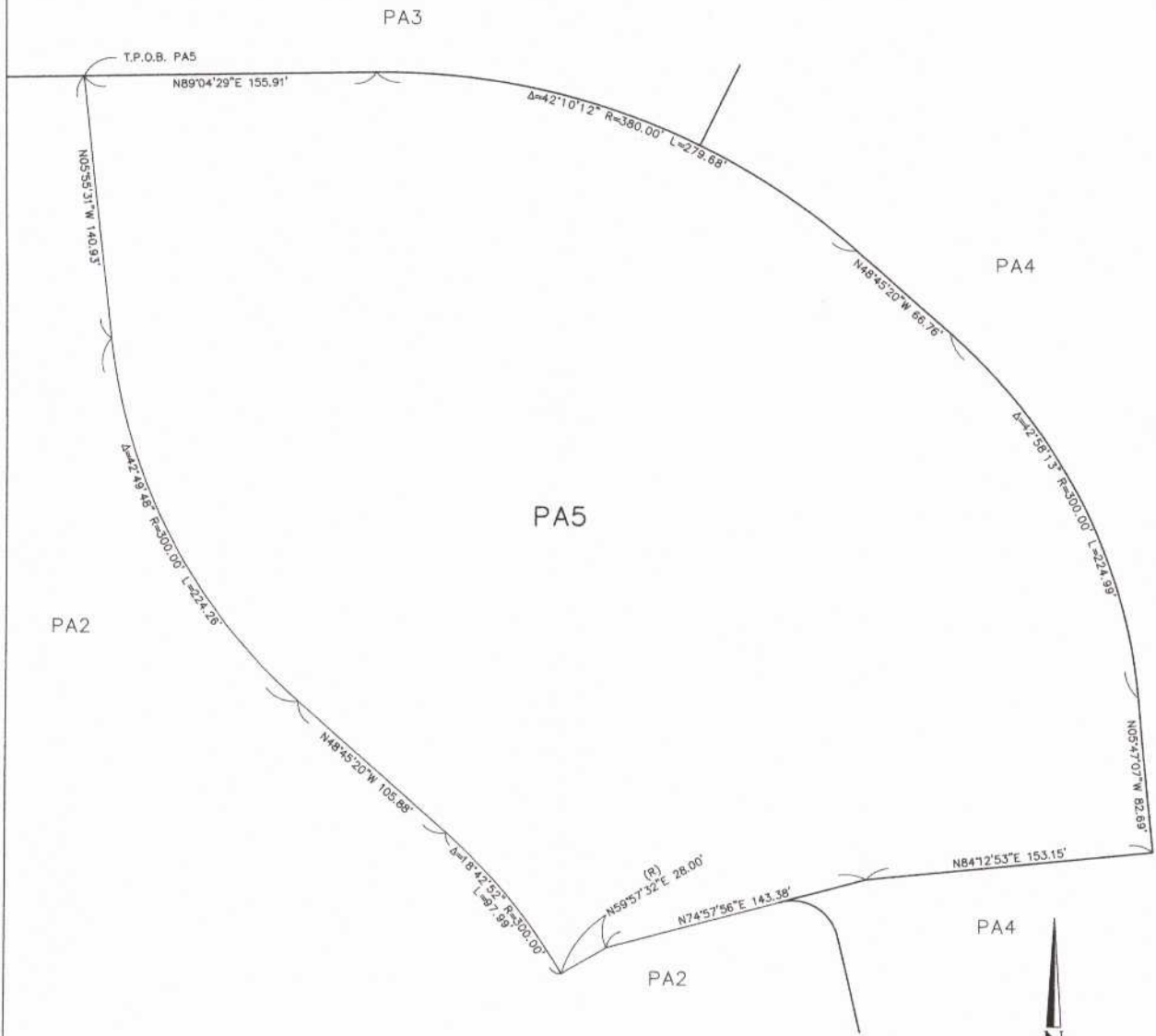
SP ZONE SPECIFIC PLAN (SP 333)



APN 391-140-019
 APN 391-100-025
 APN 391-480-019
 APN 391-140-006

FEB 02 2006

ALBERHILL AREA
 SEC. 17, T. 5 S., R. 5 W., S. B. M.



MAP NO. 2.2158

CHANGE OF OFFICIAL ZONING PLAN
 AMENDING MAP NO. 2
 ORDINANCE NO. 348

CHANGE OF ZONE CASE NO. 07250
 ADOPTED BY ORDINANCE NO. 348.4370
 ADOPTION DATE FEBRUARY 28, 2006
 RIVERSIDE COUNTY BOARD OF SUPERVISORS

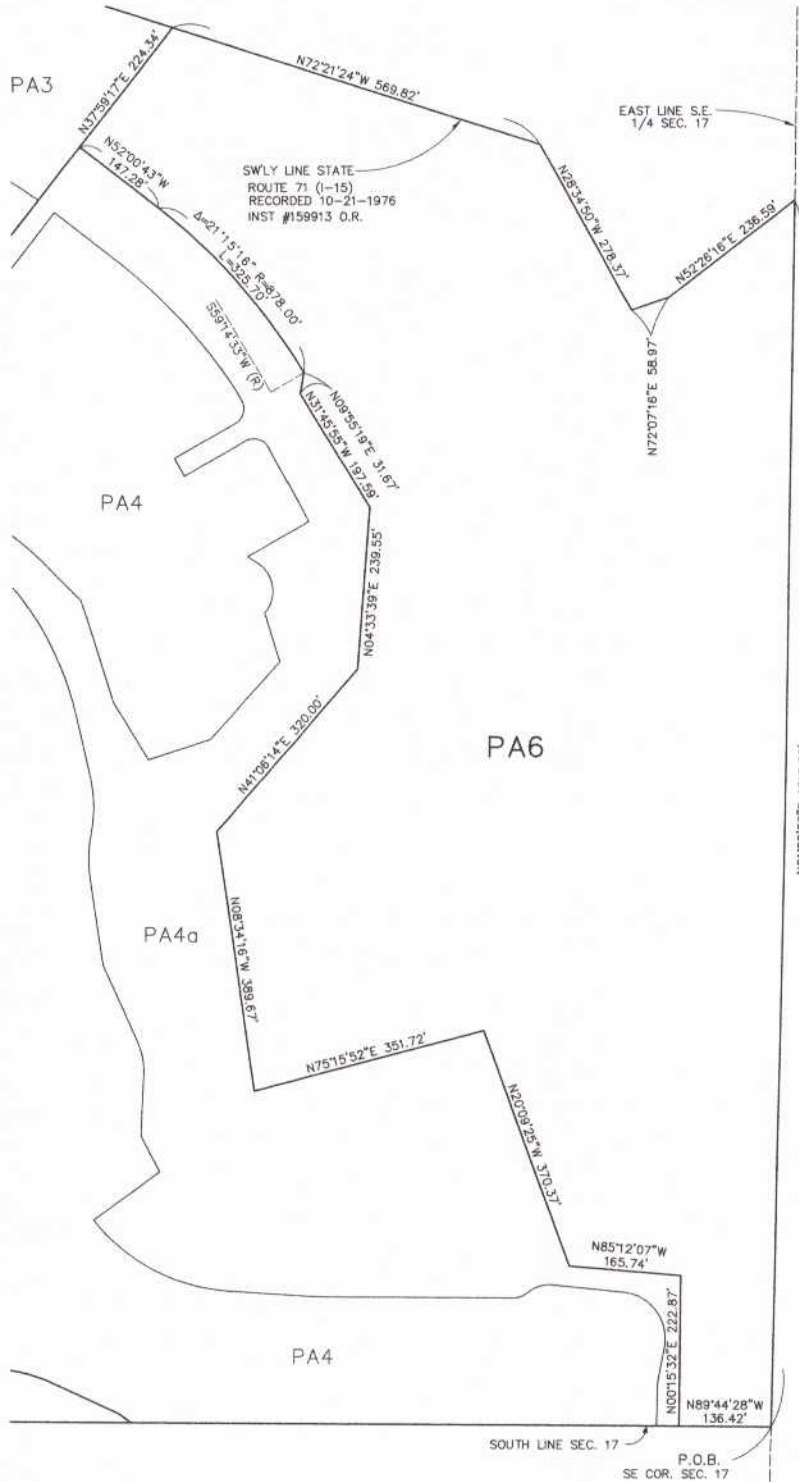
LEGEND

SP ZONE SPECIFIC PLAN (SP 333)

APN 391-140-019
 APN 391-100-025
 APN 391-480-019
 APN 391-140-006

FEB 02 2006

ALBERHILL AREA
 SEC. 17, T. 5 S., R. 5 W., S. B. M.



MAP NO. 2.2158

CHANGE OF OFFICIAL ZONING PLAN
 AMENDING MAP NO. 2
 ORDINANCE NO. 348

CHANGE OF ZONE CASE NO. 07250
 ADOPTED BY ORDINANCE NO. 348.4370
 ADOPTION DATE FEBRUARY 28, 2006
 RIVERSIDE COUNTY BOARD OF SUPERVISORS

LEGEND

SP ZONE SPECIFIC PLAN (SP 333)

APN 391-140-019
 APN 391-100-025
 APN 391-480-019
 APN 391-140-006

FEB 02 2006