

SUBMITTAL TO THE BOARD OF SUPERVISORS  
COUNTY OF RIVERSIDE, STATE OF CALIFORNIA

683A



**FROM:** County Counsel  
**SUBJECT:** Ordinance No. 348.4370

**SUBMITTAL DATE:** February 2, 2006

**RECOMMENDED MOTION:** That the Board of Supervisors adopt Ordinance No. 348.4370 amending the zoning in the Alberhill Area shown on Map No. 2.2158 Change of Zone Case No. 7250.

**BACKGROUND:** Change of Zone Case No. 7250 was approved by the Board of Supervisors on February 28, 2006.

MINH TRAN  
Deputy County Counsel

**C.E.O. RECOMMENDATION:**

Policy  
 Policy

Consent  
 Consent

**APPROVE**

County Executive Office Signature

Department Recommendation:  
Per Executive Office:

Prev. Agn. ref.

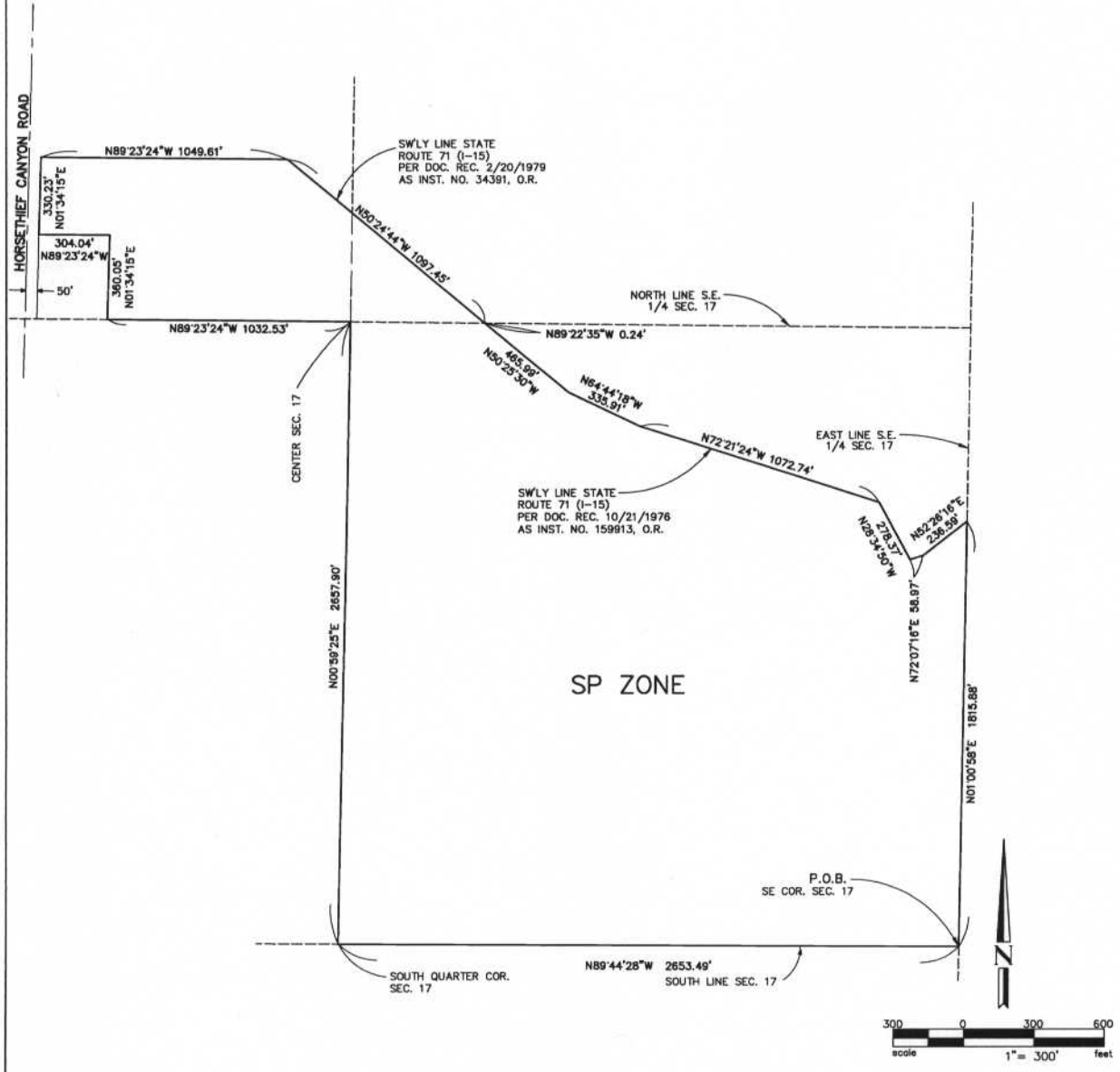
Dist. First

AGENDA NO.

2.11



ALBERHILL AREA  
 SEC. 17, T. 5 S., R. 5 W., S. B. M.



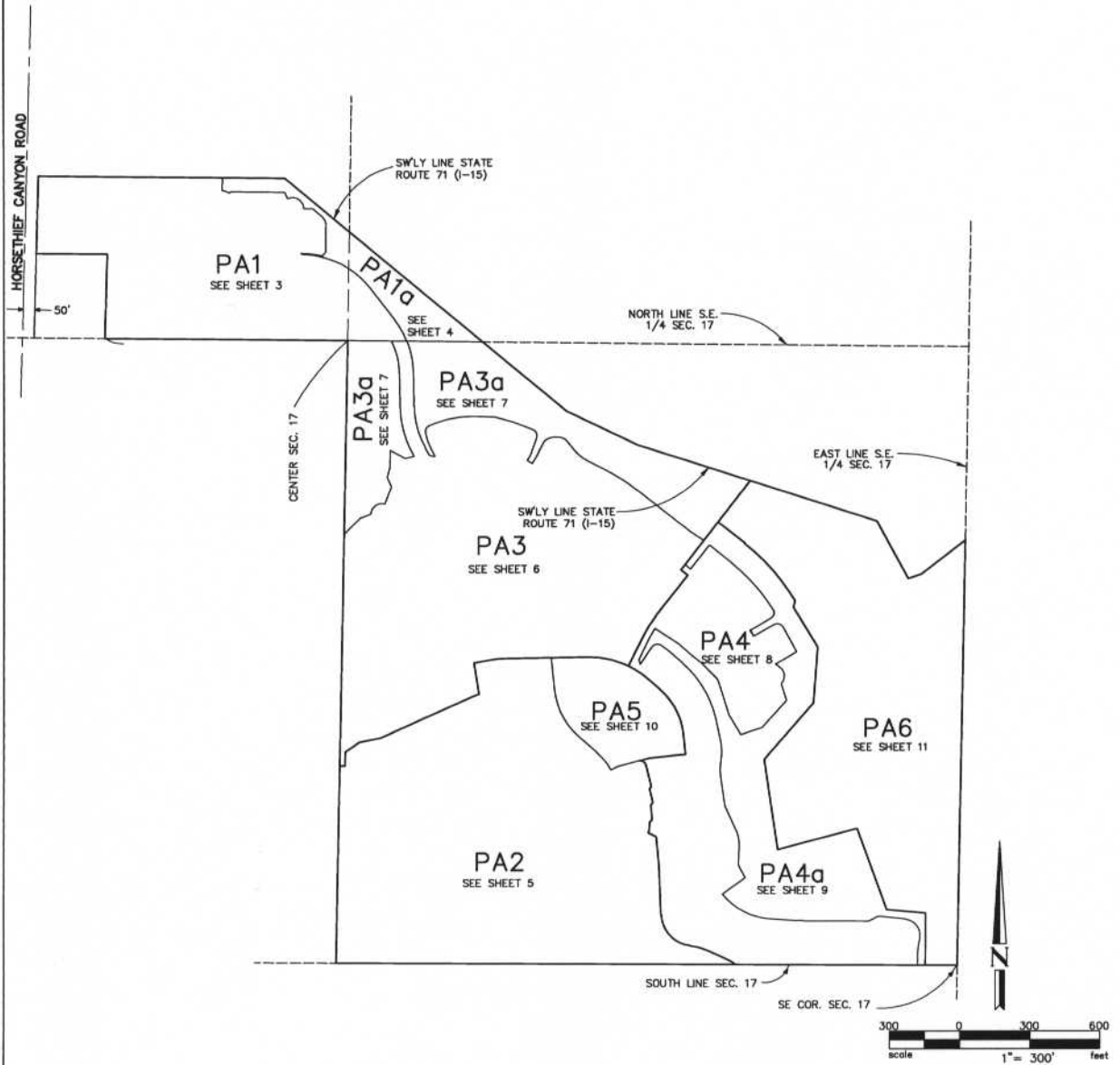
MAP NO. 2.2158  
 CHANGE OF OFFICIAL ZONING PLAN  
 AMENDING MAP NO. 2  
 ORDINANCE NO. 348  
 CHANGE OF ZONE CASE NO. 07250  
 ADOPTED BY ORDINANCE NO. 348.4370  
 ADOPTION DATE MARCH 7, 2006  
 RIVERSIDE COUNTY BOARD OF SUPERVISORS

LEGEND  
 SP ZONE SPECIFIC PLAN (SP 333)

APN 391-140-019  
 APN 391-100-025  
 APN 391-480-019  
 APN 391-140-006

ALBERHILL AREA  
 SEC. 17, T. 5 S., R. 5 W., S. B. M.

SHEET 2 OF 11



MAP NO. 2.2158  
 CHANGE OF OFFICIAL ZONING PLAN  
 AMENDING MAP NO. 2  
 ORDINANCE NO. 348

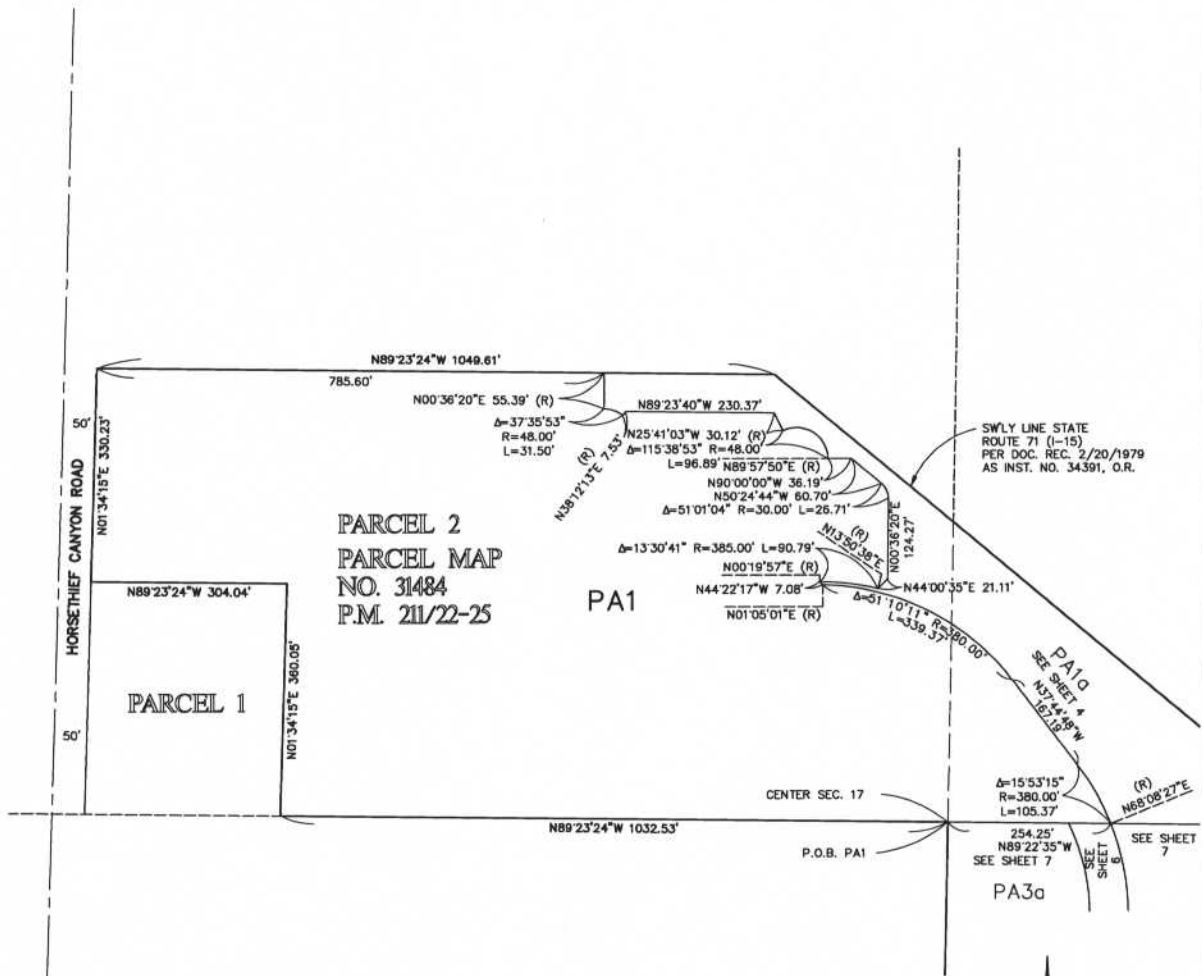
CHANGE OF ZONE CASE NO. 07250  
 ADOPTED BY ORDINANCE NO. 348.4370  
 ADOPTION DATE MARCH 7, 2006  
 RIVERSIDE COUNTY BOARD OF SUPERVISORS

LEGEND  
 SP ZONE SPECIFIC PLAN (SP 333)

APN 391-140-019  
 APN 391-100-025  
 APN 391-480-019  
 APN 391-140-006

ALBERHILL AREA  
 SEC. 17, T. 5 S., R. 5 W., S. B. M.

SHEET 3 OF 11



PARCEL 2  
 PARCEL MAP  
 NO. 31484  
 P.M. 211/22-25

PA1

PARCEL 1

CENTER SEC. 17

P.O.B. PA1

SWLY LINE STATE  
 ROUTE 71 (I-15)  
 PER DOC. REC. 2/20/1979  
 AS INST. NO. 34391, O.R.

PA1C  
 SEE SHEET 4  
 N57°34'48\"/>

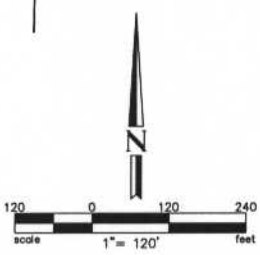
Δ=15°53'15\"/>
 R=380.00'  
 L=105.37'  
 254.25'  
 N89°22'35\"/>
 SEE SHEET 7

SEE SHEET 7

SEE SHEET 7

SEE SHEET 7

SEE SHEET 7



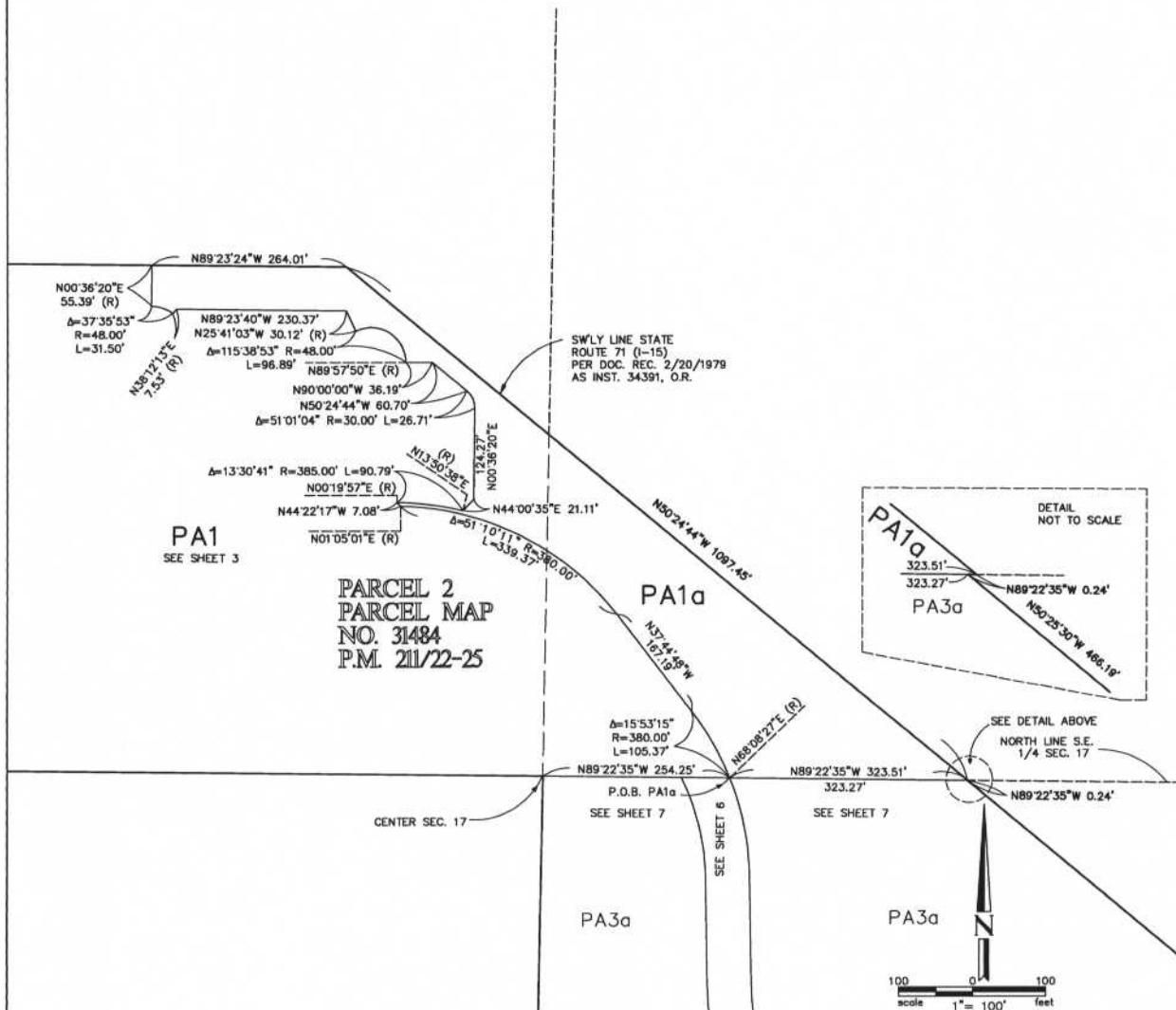
MAP NO. 2.2158  
 CHANGE OF OFFICIAL ZONING PLAN  
 AMENDING MAP NO. 2  
 ORDINANCE NO. 348  
 CHANGE OF ZONE CASE NO. 07250  
 ADOPTED BY ORDINANCE NO. 348.4370  
 ADOPTION DATE MARCH 7, 2006  
 RIVERSIDE COUNTY BOARD OF SUPERVISORS

LEGEND  
 SP ZONE SPECIFIC PLAN (SP 333)

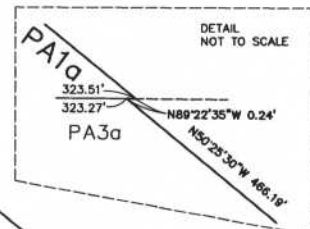
APN 391-140-019  
 APN 391-100-025  
 APN 391-480-019  
 APN 391-140-006

ALBERHILL AREA  
 SEC. 17, T. 5 S., R. 5 W., S. B. M.

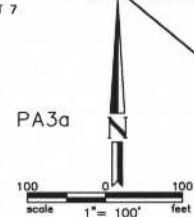
SHEET 4 OF 11



PARCEL 2  
 PARCEL MAP  
 NO. 31484  
 P.M. 211/22-25



SEE DETAIL ABOVE  
 NORTH LINE S.E.  
 1/4 SEC. 17



MAP NO. 2.2158

CHANGE OF OFFICIAL ZONING PLAN  
 AMENDING MAP NO. 2  
 ORDINANCE NO. 348

CHANGE OF ZONE CASE NO. 07250  
 ADOPTED BY ORDINANCE NO. 348.4370  
 ADOPTION DATE MARCH 7, 2006

RIVERSIDE COUNTY BOARD OF SUPERVISORS

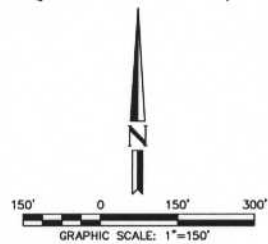
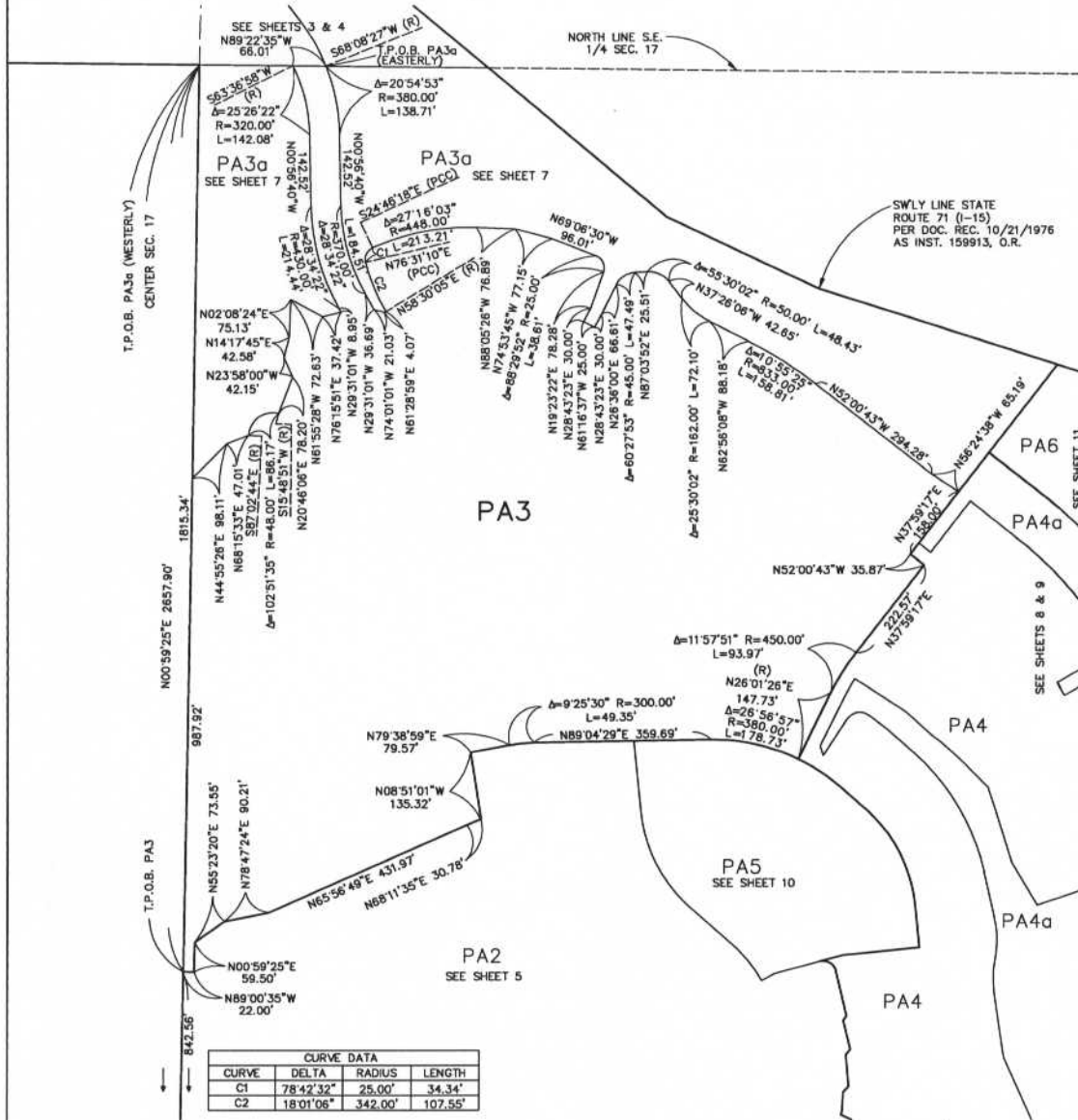
LEGEND

**SP ZONE** SPECIFIC PLAN (SP 333)

APN 391-140-019  
 APN 391-100-025  
 APN 391-480-019  
 APN 391-140-006



ALBERHILL AREA  
SEC. 17, T. 5 S., R. 5 W., S. B. M.



MAP NO. 2.2158

CHANGE OF OFFICIAL ZONING PLAN  
AMENDING MAP NO. 2  
ORDINANCE NO. 348

CHANGE OF ZONE CASE NO. 07250  
ADOPTED BY ORDINANCE NO. 348.4370  
ADOPTION DATE MARCH 7, 2006

RIVERSIDE COUNTY BOARD OF SUPERVISORS

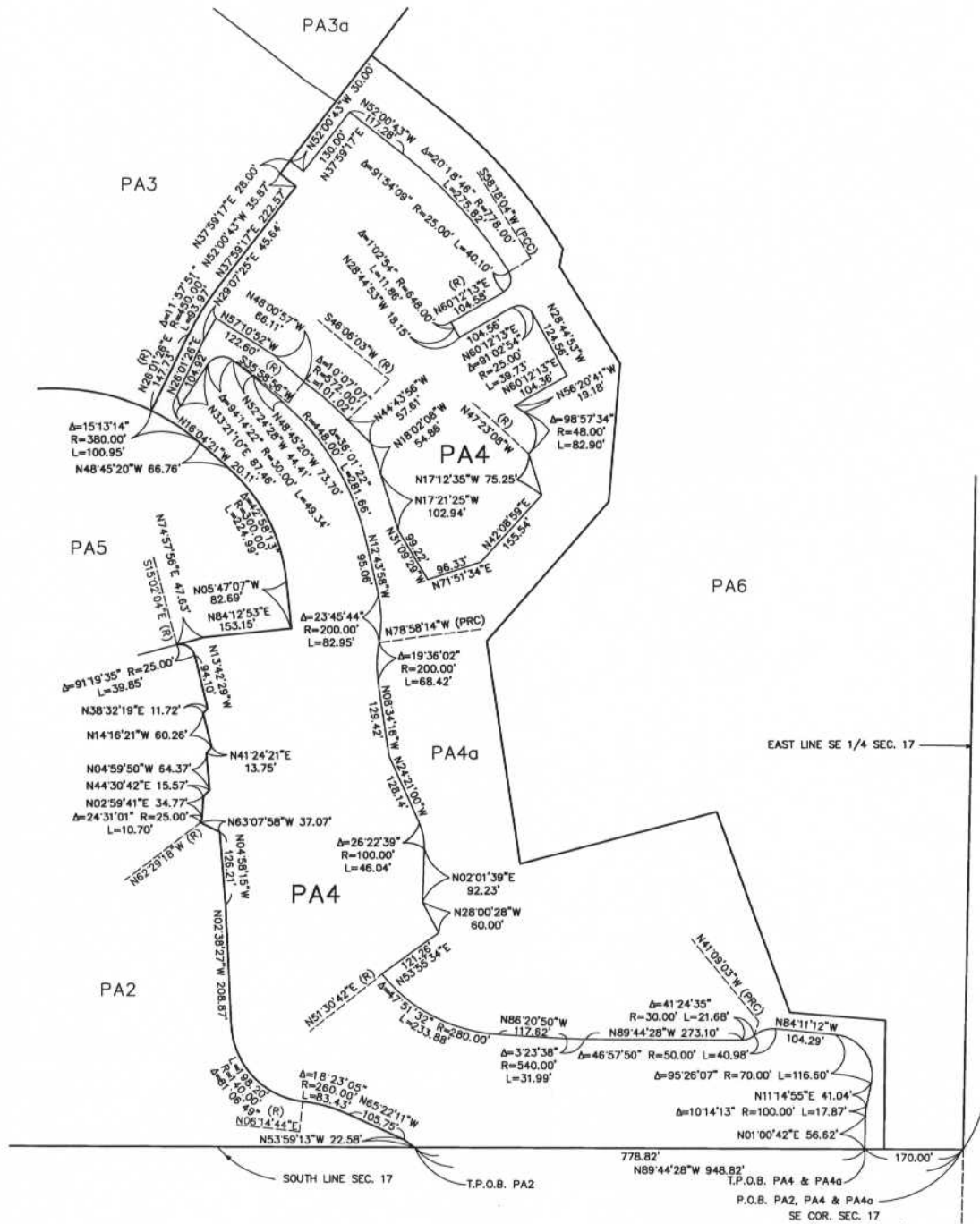
LEGEND

SP\_ZONE SPECIFIC PLAN (SP 333)

APN 391-140-019  
APN 391-100-025  
APN 391-480-019  
APN 391-140-006



ALBERHILL AREA  
 SEC. 17, T. 5 S., R. 5 W., S. B. M.



MAP NO. 2.2158

CHANGE OF OFFICIAL ZONING PLAN  
 AMENDING MAP NO. 2  
 ORDINANCE NO. 348

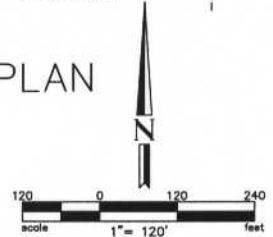
CHANGE OF ZONE CASE NO. 07250  
 ADOPTED BY ORDINANCE NO. 348.4370  
 ADOPTION DATE MARCH 7, 2006

RIVERSIDE COUNTY BOARD OF SUPERVISORS

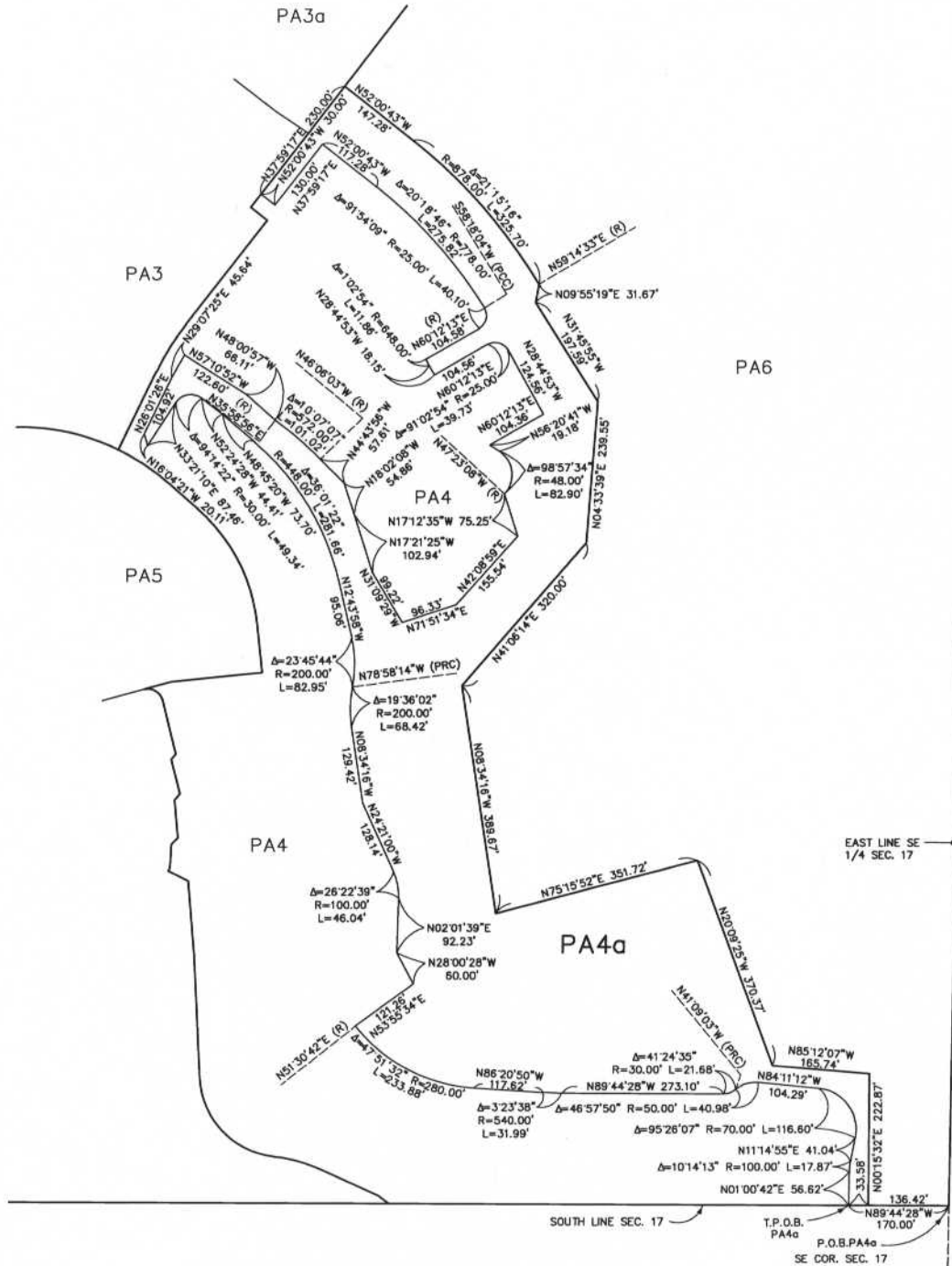
LEGEND

SP\_ZONE SPECIFIC PLAN (SP 333)

APN 391-140-019  
 APN 391-100-025  
 APN 391-480-019  
 APN 391-140-006

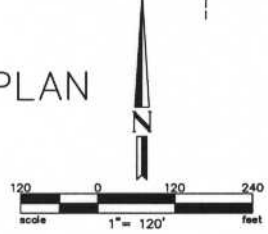


ALBERHILL AREA  
 SEC. 17, T. 5 S., R. 5 W., S. B. M.



MAP NO. 2.2158  
 CHANGE OF OFFICIAL ZONING PLAN  
 AMENDING MAP NO. 2  
 ORDINANCE NO. 348  
 CHANGE OF ZONE CASE NO. 07250  
 ADOPTED BY ORDINANCE NO. 348.4370  
 ADOPTION DATE MARCH 7, 2006  
 RIVERSIDE COUNTY BOARD OF SUPERVISORS

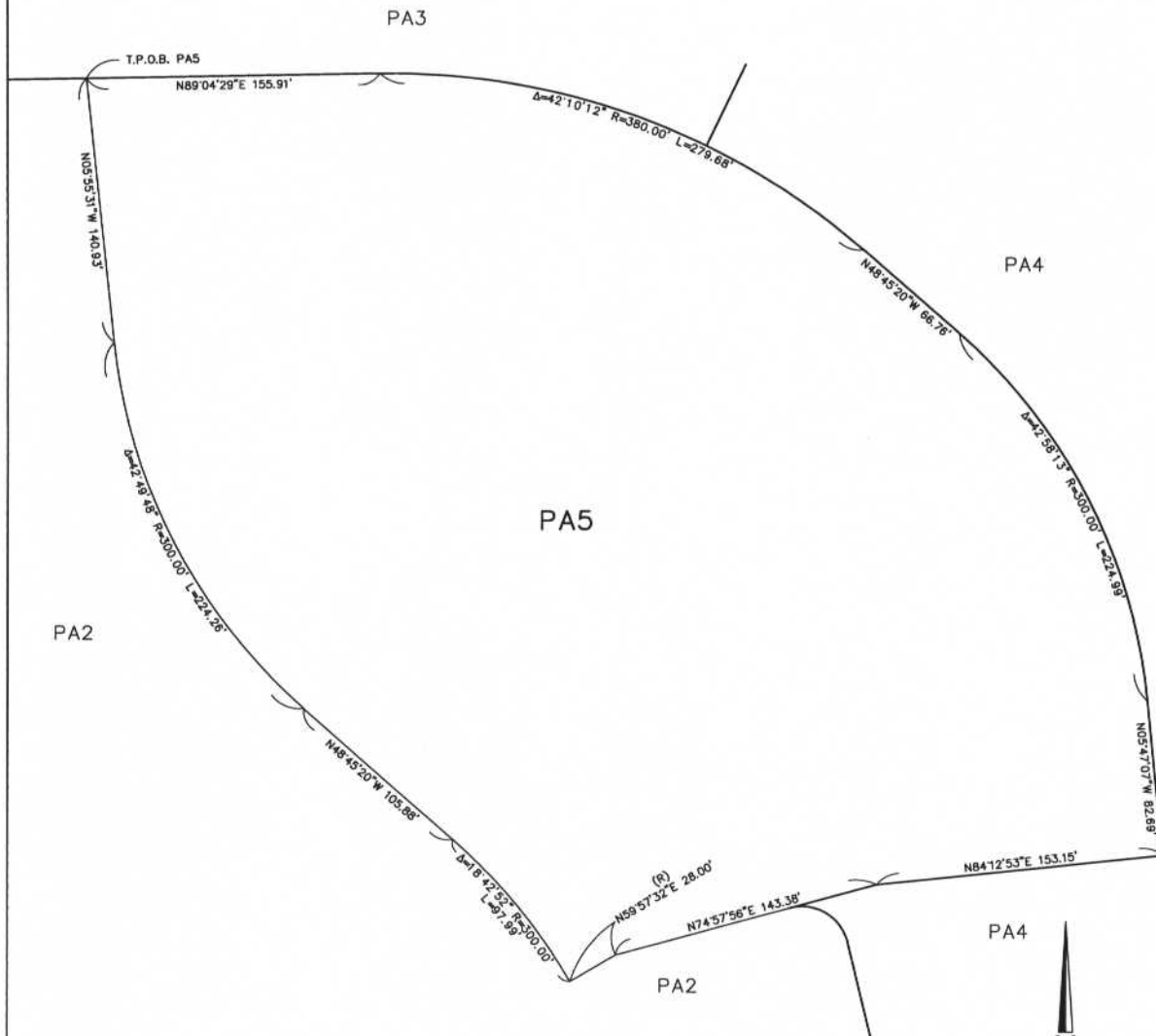
LEGEND  
 SP ZONE SPECIFIC PLAN (SP 333)



APN 391-140-019  
 APN 391-100-025  
 APN 391-480-019  
 APN 391-140-006

ALBERHILL AREA  
 SEC. 17, T. 5 S., R. 5 W., S. B. M.

SHEET 10 OF 11



MAP NO. 2.2158

CHANGE OF OFFICIAL ZONING PLAN  
 AMENDING MAP NO. 2  
 ORDINANCE NO. 348

CHANGE OF ZONE CASE NO. 07250  
 ADOPTED BY ORDINANCE NO. 348.4370  
 ADOPTION DATE MARCH 7, 2006  
 RIVERSIDE COUNTY BOARD OF SUPERVISORS

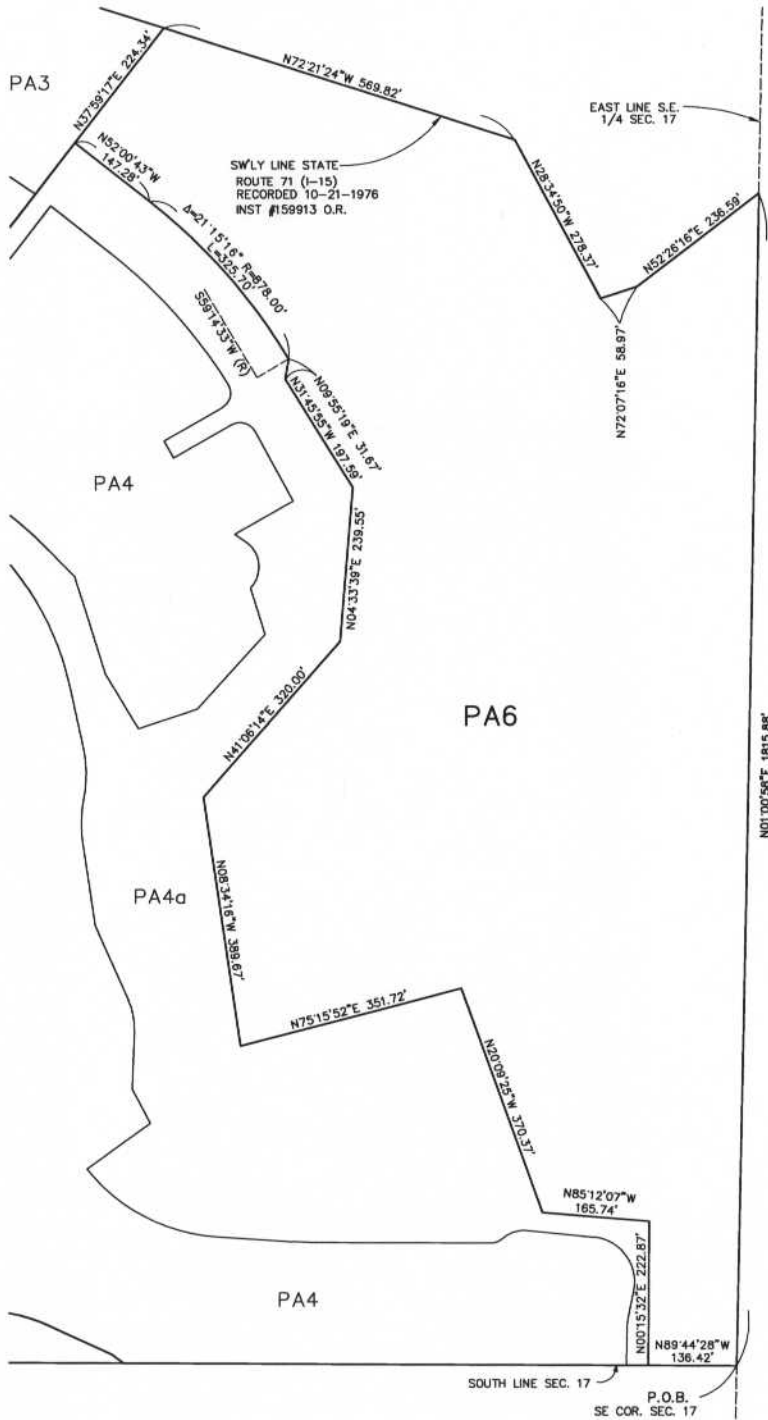
LEGEND

**SP ZONE** SPECIFIC PLAN (SP 333)

APN 391-140-019  
 APN 391-100-025  
 APN 391-480-019  
 APN 391-140-006

ALBERHILL AREA  
 SEC. 17, T. 5 S., R. 5 W., S. B. M.

SHEET 11 OF 11



MAP NO. 2.2158

CHANGE OF OFFICIAL ZONING PLAN  
 AMENDING MAP NO. 2  
 ORDINANCE NO. 348

CHANGE OF ZONE CASE NO. 07250  
 ADOPTED BY ORDINANCE NO. 348.4370  
 ADOPTION DATE MARCH 7, 2006

RIVERSIDE COUNTY BOARD OF SUPERVISORS

LEGEND

**SP\_ZONE** SPECIFIC PLAN (SP 3.33)

APN 391-140-019  
 APN 391-100-025  
 APN 391-480-019  
 APN 391-140-006