

328A



**SUBMITTAL TO THE BOARD OF SUPERVISORS  
COUNTY OF RIVERSIDE, STATE OF CALIFORNIA**

**FROM:** TLMA-Transportation Department

**SUBMITTAL DATE:**  
April 3, 2006

**SUBJECT:** Landscaping and Lighting Maintenance District No. 89-1-Consolidated, Annexation of Location 2 to Zone 44.

**RECOMMENDED MOTION:** That the Board adopt the following Resolutions:

Resolution No. 2006-087, a Resolution of the County of Riverside initiating proceedings for the annexation of Location 2 to Zone 44 to Landscaping and Lighting Maintenance District No. 89-1-Consolidated and ordering preparation of the Engineer's Report regarding the proposed annexation of Location 2.

Resolution No. 2006-088, a Resolution of the County of Riverside declaring its intent to order the annexation of Location 2 to Zone 44 of Landscaping and Lighting Maintenance District No. 89-1-Consolidated of the County of Riverside pursuant to the Landscaping and Lighting Act of 1972 for the maintenance and servicing of catch basin filtration systems; giving notice of and setting the time and place of the public hearing on the annexation of Location 2, ordering a mailed ballot election; and directing notice of the public hearing and ballot be mailed pursuant to Article XIID of the California Constitution.

FORM APPROVED  
COUNTY COUNSEL

MAR 27 2006

BY *[Signature]*

*[Signature]*  
George A. Johnson  
Director of Transportation

**FINANCIAL DATA**

Current F.Y. Total Cost:	\$ 0	In Current Year Budget:	No
Current F.Y. Net County Cost:	\$ 0	Budget Adjustment:	No
Annual Net County Cost:	\$ 0	For Fiscal Year:	2005-2006

**SOURCE OF FUNDS:**

Positions To Be Deleted Per A-30	<input type="checkbox"/>
Requires 4/5 Vote	<input type="checkbox"/>

**C.E.O. RECOMMENDATION:** **APPROVE**

**County Executive Office Signature**

*[Signature]*

Dep't Recomm.:  Consent  Policy   
Per Exec. Ofc.:  Consent  Policy

**Prev. Agn. Ref.:** | **District: 2** | **Agenda Number:**

3 . 32

**SUBJECT:** Landscaping and Lighting Maintenance District No. 89-1-Consolidated Annexation of Location 2 to Zone 44.

April 3, 2006  
Page 2 of 2

**BACKGROUND:** Adoption of Resolution No. 2006-087 appoints the Director of the Transportation Department as the Engineer to prepare a Report regarding the proposed annexation of Location 2 to Zone 44 of Landscaping and Lighting Maintenance District No. 89-1-Consolidated ("L&LM District No. 89-1-C").

Resolution No. 2006-088 declares the Board's intention of ordering the annexation of Location 2 to Zone 44 of L&LM District No. 89-1-C. Annexation of Location 2 to Zone 44 of L&LMD No. 89-1-C will fund the maintenance and servicing of catch basin filtration system improvements within public rights of way located easterly of Menifee Rd.; easterly and westerly of Leon Rd.; southerly of Olive Ave.; westerly of State Highway 79; in the French Valley area and includes 1482 single-family residential lots.

The proposed budget of fiscal year 2006-07 for Location 2 of Zone 44 is \$82,577.00 that will result in an assessment for fiscal year 2006-07 within Location 2 of \$55.72 per parcel. The annual assessment will be adjusted annually by the greater of 2% or the cumulative percentage increase in the CPI-U, if any, as it stands as of March of each year over the base index for March of 2006.

Consistent with the Board's direction regarding compliance with Article XIID of the California Constitution and the Landscaping and Lighting Act of 1972, the attached resolutions have been prepared and a public hearing scheduled for 9:30 a.m. on June 6, 2006 to receive testimony for and against the proposed assessment. Each property owner within the proposed Location 2 of Zone 44 will receive a notice of the public hearing and mail-in ballot, an impartial analysis, a copy of Resolution No. 2006-088 and an information sheet.

Ballots must be returned prior to the conclusion of the public hearing. If, at the time designated for the tabulation of the ballots, the ballots submitted in favor of the annexation and levy of the assessment exceed the ballots submitted in opposition of said annexation and levy, Location 2 will be annexed to Zone 44 of L&LMD No. 89-1-C.

2 RESOLUTION NO. 2006-087

3  
4 **RESOLUTION OF THE BOARD OF SUPERVISORS OF THE COUNTY OF RIVERSIDE INITIATING**  
5 **PROCEEDINGS FOR THE ANNEXATION OF LOCATION 2 TO ZONE 44 OF LANDSCAPING AND**  
6 **LIGHTING MAINTENANCE DISTRICT NO. 89-1- CONSOLIDATED OF THE COUNTY OF**  
7 **RIVERSIDE PURSUANT TO THE LANDSCAPING AND LIGHTING ACT OF 1972 AND ORDERING**  
8 **PREPARATION OF ENGINEER’S REPORT REGARDING SAID ANNEXATION**

9 **WHEREAS**, the Board of Supervisors (hereinafter the Board of Supervisors”) of the County of  
10 Riverside (hereinafter the “County”) has been advised by the Transportation Department (hereinafter  
11 “Department”) of the County that said Department has received an application from the owners (the  
12 “Applicants”) of all the property within the unincorporated area of the County (hereinafter “Location 2”),  
13 as shown and described in Exhibit “A”, which is attached hereto and made a part hereof, to be  
14 annexed to Landscaping and Lighting Maintenance District No. 89-1-Consolidated (hereinafter  
15 “L&LMD No. 89-1-C”) of the County of Riverside, State of California, and the Board of Supervisors has  
16 determined that it is necessary and desirable to initiate proceedings for the annexation of Location 2 to  
17 Zone 44 of L&LMD No. 89-1-C pursuant to the Landscaping and Lighting Act of 1972, Part 2  
18 (commencing with Section 22500) of Division 15 of Streets and Highways Code (hereinafter,  
19 respectively, the “Act” and the “Street and Highways Code”); and

20 **WHEREAS**, such proceedings shall comply with the requirements of Article XIID of the  
21 California Constitution and Section 4000 of the Elections Code requiring voter approval of the  
22 proposed assessment to be levied by L&LMD No. 89-1-C for Location 2; and

23 **WHEREAS**, the Director of the Transportation Department, or his designee, is a licensed and  
24 registered civil engineer, has expertise with respect to the annexation of territory to landscaping and  
25 lighting maintenance districts and the levying of assessments for said purposes and, therefore, is able  
26 to serve as the engineer (hereinafter the “Engineer”) for the County with regard to the annexation of  
of Location 2 to Zone 44 of L&LMD No. 89-1-C.

**NOW, THEREFORE, BE IT RESOLVED, FOUND, DETERMINED AND ORDERED** by the

1 Board of Supervisors of the County of Riverside assembled in regular session on April 11, 2006 as  
2 follows:

3 **Section 1. Recitals.** The Board of Supervisors hereby finds and determines that all  
4 the above recitals are true and correct.

5 **Section 2. Annexation.** The Board of Supervisors proposes to annex Location 2 to  
6 Zone 44 of L&LMD No. 89-1-C and to initiate and conduct proceedings therefore pursuant to the Act  
7 for the purpose of levying an annual assessment on all parcels within Location 2 to pay the costs of  
8 the following services:

- 9 (a) The maintenance and servicing of catch basin filtration systems within the public  
10 right-of-way including the removal of petroleum hydrocarbons and other  
11 pollutants from water runoff; and

12 **Section 3. Boundaries and Designation.** The boundaries of Location 2 that is  
13 proposed to be annexed to L&LMD No. 89-1-C shall include all of the property as shown and  
14 described in Exhibit "A".

15 **Section 4. Report.** The Director of the Transportation Department of the County, or  
16 his designee, is hereby designated Engineer and is ordered to prepare and file a report with the Clerk  
17 of the Board of Supervisors in accordance with Sections 22608 and 22585 et. seq. of the Streets and  
18 Highways Code and Section 4 of Article XIID of the California Constitution regarding said annexation  
19 and the levy.

20 **Section 5. Effective Date.** This Resolution shall take effect from and after its  
21 date of adoption.

22  
23  
24  
25  
26  
FORM APPROVED  
COUNTY COUNSEL

MAR 27 2006

BY 

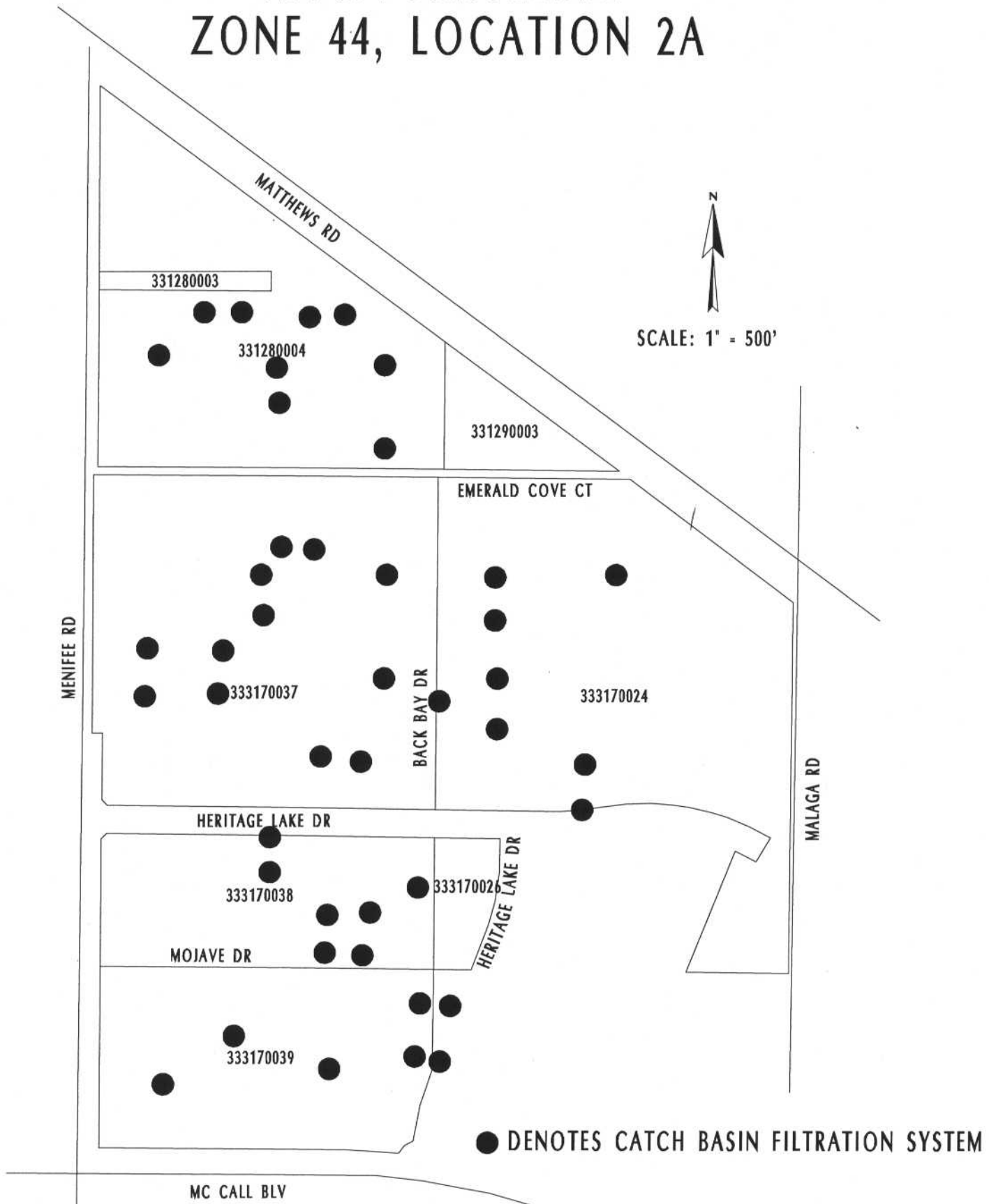
**EXHIBIT "A"**

**DESCRIPTION OF BOUNDARIES**

The boundaries of Location 2 of Zone 44 to be annexed into Landscaping and Lighting Maintenance District No.89-1-Consolidated, of the County of Riverside are coterminous with the boundaries of Lots 1 through 493 as shown on Tract Map Nos. 31795, 31795-1, 31795-2, 31795-3 and 31795-4; Lots 1 through 379 as shown on Tract Map No. 31892; Lots 1 through 487 as shown on Tract Map Nos. 30322-1, 30808, 30808-1 and 30808-2; Lots 1 through 74 as shown on Tract Map No. 30996; and Lots 1 through 49 as shown on Tract Map No. 30791 in the County of Riverside, State of California for fiscal year 2006-07.

1  
2  
3  
4  
5  
6  
7  
8  
9  
10  
11  
12  
13  
14  
15  
16  
17  
18  
19  
20  
21  
22  
23  
24  
25  
26  
27  
28

# LANDSCAPING AND LIGHTING MAINTENANCE DISTRICT NO. 89-1-CONSOLIDATED ZONE 44, LOCATION 2A

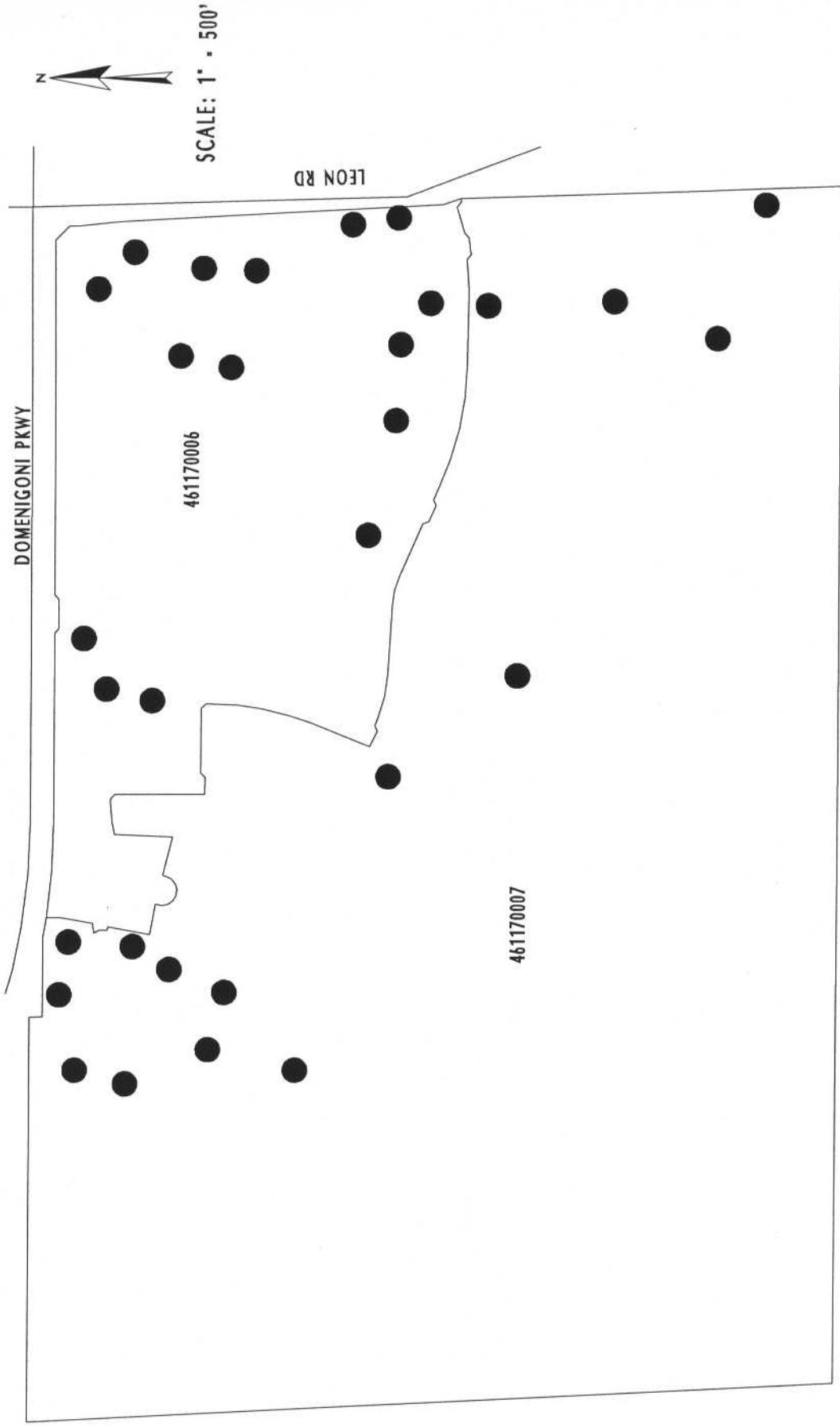


This map was made by the Riverside County Geographic Information System. The map elements were produced by the Assessor and the Transportation and Land Management Agency which is comprised of the Transportation, Building & Safety, and Planning departments.

MARCH 1, 2007

PORTION OF SECTIONS 13 & 24, T.5S., R.3W.  
TRACT NOS. 31795, 31795-1, 31795-2, 31795-3 & 31795-4  
493 PARCELS

LANDSCAPING AND LIGHTING MAINTENANCE DISTRICT NO. 89-1-CONSOLIDATED  
**ZONE 44, LOCATION 2B**  
 PORTION OF SECTION 31, T.5S.,R.2W.



● DENOTES CATCH BASIN FILTRATION SYSTEM

TRACT NO. 31892  
 379 PARCELS



This map was made by the Riverside County Geographic Information System. The map elements were produced by the Assessor and the Transportation and Land Management Agency which is comprised of the Transportation, Building & Safety, and Planning departments.

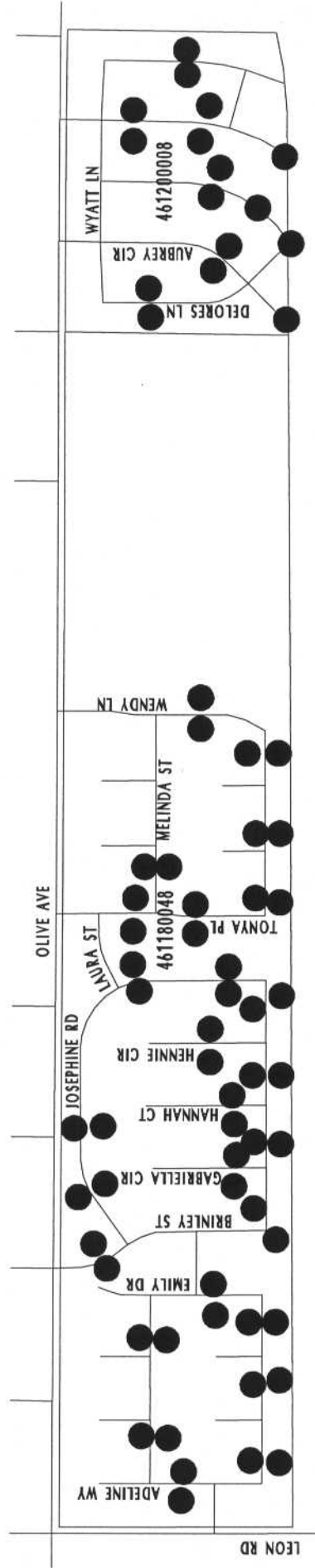
MARCH 6, 2006

LANDSCAPING AND LIGHTING MAINTENANCE DISTRICT NO. 89-1-CONSOLIDATED  
**ZONE 44, LOCATION 2C**

PORTION OF SECTIONS 32 & 33, T.5S., R.2W.  
 TRACT NOS. 30322-1, 30808, 30808-1 & 30808-2  
 487 PARCELS



SCALE: 1" = 700'

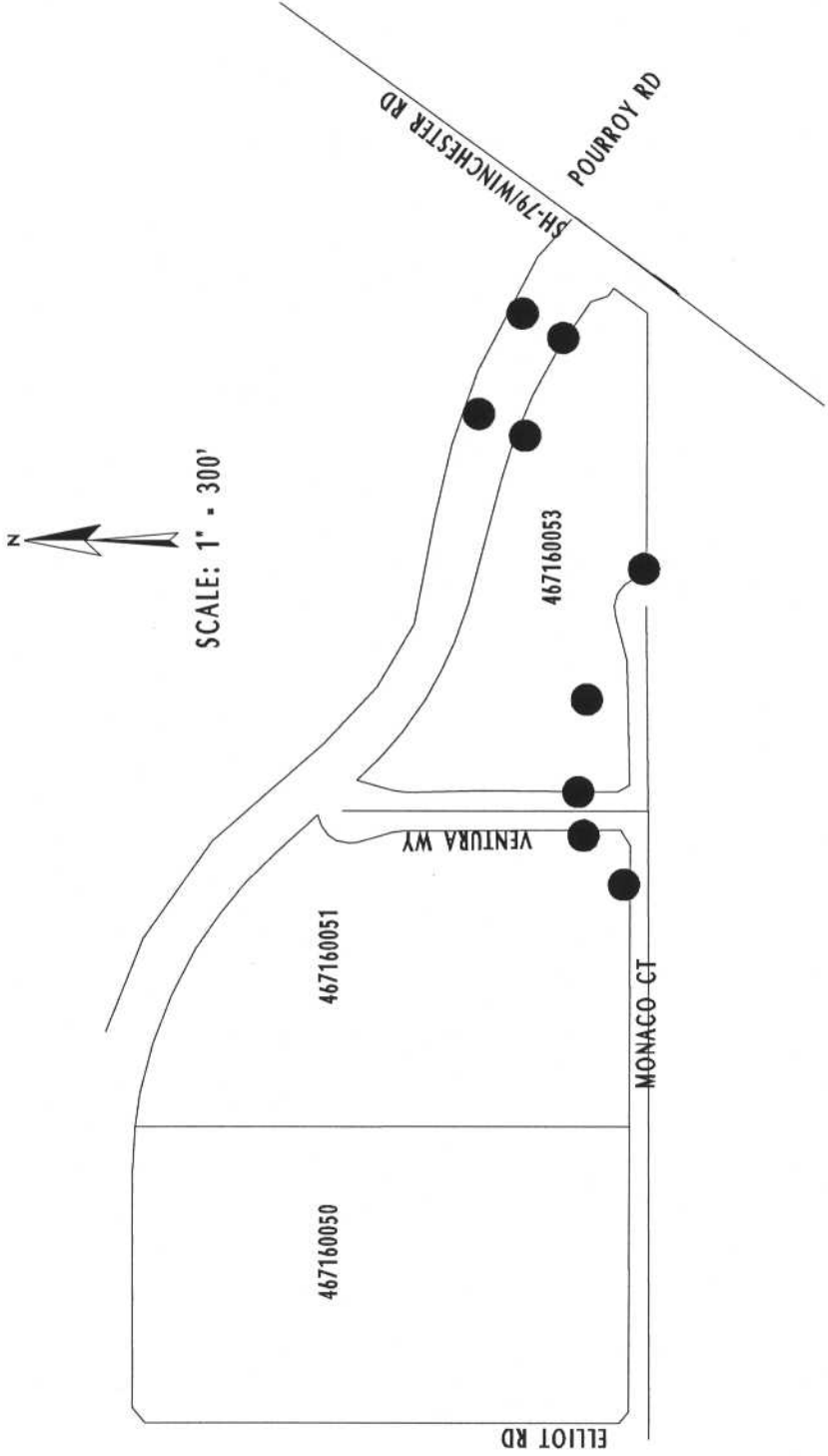


This map was made by the Riverside County Geographic Information System. The map elements were produced by the Assessor and the Transportation and Land Management Agency which is comprised of the Transportation, Building & Safety, and Planning departments.

MARCH 6, 2006

● DENOTES CATCH BASIN FILTRATION SYSTEM

LANDSCAPING AND LIGHTING MAINTENANCE DISTRICT NO. 89-T-CONSOLIDATED  
**ZONE 44, LOCATION 2D**  
 PORTION OF SECTION 29, T.6S., R.2W.  
 TRACT NO. 30996  
 74 PARCELS

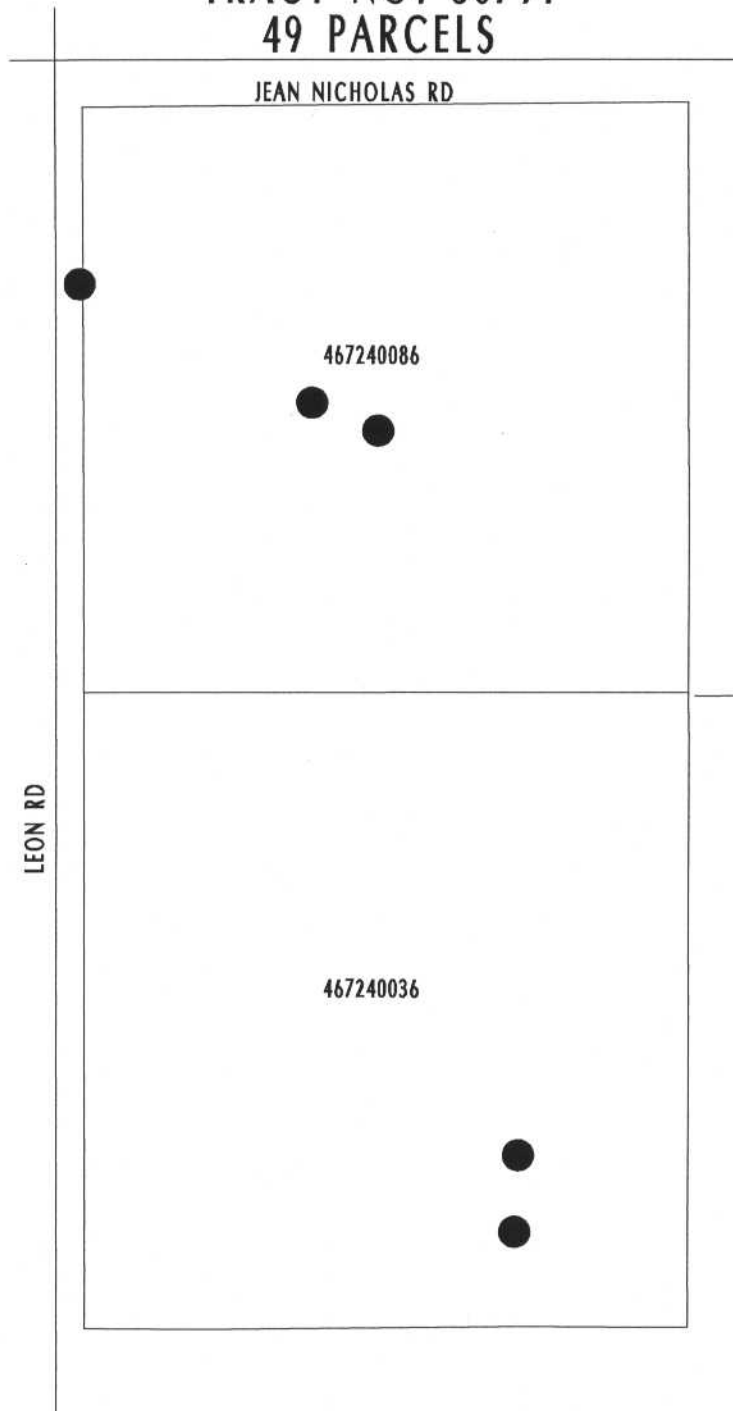


This map was made by the Riverside County Geographic Information System. The map elements were produced by the Assessor and the Transportation and Land Management Agency which is comprised of the Transportation, Building & Safety, and Planning departments.  
**MARCH 6, 2006**

● DENOTES CATCH BASIN FILTRATION SYSTEM

LANDSCAPING AND LIGHTING MAINTENANCE DISTRICT  
NO. 89-1-CONSOLIDATED

**ZONE 44, LOCATION 2G**  
PORTION OF SECTION 32, T.6S.,R.2W.  
TRACT NO. 30791  
49 PARCELS



SCALE: 1" = 200'

● DENOTES CATCH BASIN FILTRATION SYSTEM



This map was made by the Riverside County Geographic Information System. The map elements were produced by the Assessor and the Transportation and Land Management Agency which is comprised of the Transportation, Building & Safety, and Planning departments.

MARCH 8, 2006'

2 RESOLUTION NO. 2006-088

3 RESOLUTION OF THE BOARD OF SUPERVISORS OF THE COUNTY OF RIVERSIDE DECLARING  
4 ITS INTENT TO ORDER THE ANNEXATION OF LOCATION 2 TO ZONE 44 OF LANDSCAPING  
5 AND LIGHTING MAINTENANCE DISTRICT NO. 89-1-CONSOLIDATED OF THE COUNTY OF  
6 RIVERSIDE PURSUANT TO THE LANDSCAPING AND LIGHTING ACT OF 1972 FOR THE  
7 MAINTENANCE AND SERVICING OF CATCH BASIN FILTRATION SYSTEM;  
8 GIVING NOTICE OF AND SETTING THE TIME AND PLACE OF THE PUBLIC HEARING ON THE  
9 ANNEXATION OF LOCATION 2 TO ZONE 44; ORDERING A MAILED BALLOT ELECTION; AND  
10 DIRECTING NOTICE OF THE PUBLIC HEARING AND BALLOT TO BE MAILED PURSUANT TO  
11 ARTICLE XIID OF THE CALIFORNIA CONSTITUTION

12 **WHEREAS**, the Board of Supervisors (hereinafter the "Board of Supervisors") of the County of  
13 Riverside (hereinafter the County) has adopted Resolution No. 2006-087 on April 11, 2006 initiating  
14 proceedings for the annexation of Location 2 (hereinafter "Location 2") to Zone 44 (hereinafter "Zone  
15 44"), as described and shown in Exhibit "A", which is attached hereto and incorporated herein, to  
16 Landscaping and Lighting Maintenance District No.89-1-Consolidated of the County of Riverside, State  
17 of California, (hereinafter "L&LMD No. 89-1-C") pursuant to the Landscaping and Lighting Act of 1972  
18 (hereinafter the "Act"), which is Part 2 (commencing with Section 22500) of Division 15 of the Streets  
19 and Highways Code (hereinafter the "Street and Highways Code"), and ordering the preparation of a  
20 report (hereinafter the "Report") regarding the proposed annexation of Location 2 to Zone 44 and the  
21 assessments to be levied within Location 2 each fiscal year beginning fiscal year 2006-07 for the  
22 maintenance of catch basin filtration system improvements within the public right-of-way within said  
23 Location; and

24 **WHEREAS**, such proceedings shall comply with the requirements of Article XIID of the  
25 California Constitution (hereinafter "Article XIID:") and Section 4000 of the Elections Code requiring  
26 voter approval of the proposed assessment to be levied by L&LMD No. 89-1-C for Location 2; and

**WHEREAS**, the Board of Supervisors by Resolution No. 2006-087 directed the Director of the  
Transportation Department, or his designee (hereinafter the "Engineer"), to prepare and file the Report  
with the Clerk of the Board of Supervisors in accordance with Sections 22608 and 22585 et. seq. of the

1 Street and Highways Code and Section 4 of Article XIID; and

2 **WHEREAS**, said Engineer has filed the Report with the Clerk of the Board of Supervisors and  
3 the Report has been presented to and considered by the Board of Supervisors; and

4 **WHEREAS**, it is necessary that the Board of Supervisors adopt a resolution of intention  
5 pursuant to Section 22624 of the Streets and Highways Code, which fixes and gives notice, pursuant to  
6 Section 22626 of the Streets and Highways Code, of the time and place of a public hearing on said  
7 Report, the annexation of Location 2 to Zone 44, and the assessments to be levied on parcels within  
8 Location 2 beginning in fiscal year 2006-07;

9 **NOW, THEREFORE, BE IT RESOLVED, FOUND, DETERMINED AND ORDERED** by the  
10 Board of Supervisors in regular session assembled on April 11, 2006 as follows:

11 **Section 1. Findings.** The Board of Supervisors, after reviewing the Report, finds that:

12 (a) The foregoing recitals are true and correct;

13 (b) The Report contains all matters required by Sections 22565 through 22574 of the  
14 Streets and Highways Code and Section 4 of Article XIID and may, therefore, be approved by the  
15 Board of Supervisors;

16 (c) The annual assessment for fiscal year 2006-07 on all parcels within Location 2  
17 proposed to be annexed to Zone 44 of L&LMD No. 89-1-C will be \$55.72 per parcel.

18 **Section 2. Intent.** The Board of Supervisors hereby declares its intention to order the  
19 annexation of Location 2 to Zone 44, as described and shown in Exhibit "A", to L&LMD No. 89-1-C, and  
20 to levy and collect an annual assessment on all assessable lots and parcels of property within Location  
21 2 commencing with the fiscal year 2006-07 as set forth in the Report. The Report expressly states that  
22 there are no parcels or lots within Location 2 that are owned by a federal, state or other local  
23 governmental agency that will benefit from the services to be financed by the annual assessments.  
24 The annual assessments will be collected at the same time and in the same manner as property taxes  
25 are collected, and all laws providing for the collection and enforcement of property taxes shall apply to  
26 the collection and enforcement of said assessments.

1           **Section 3.    Boundaries.** All the property within boundaries of Location 2 is proposed to be  
2 annexed into Zone 44 of L&LMD No. 89-1-C and shall include that property in the unincorporated area  
3 of the County as described and shown in Exhibit "A".

4           **Section 4.    Description of Services to be Provided.** The catch basin filtration system  
5 maintenance service and improvements authorized for Location 2 of Zone 44 of L&LMD No. 89-1-C  
6 are:

7                   (a)    The maintenance and servicing of catch basin filtration systems within the public  
8 right-of-way including the removal of petroleum hydrocarbons and other pollutants from water runoff.

9           **Section 5.    Amount to be Levied.** The assessment to be levied upon each parcel that  
10 benefits from the annexation of Location 2 to Zone 44 of L&LMD No. 89-1-C will be \$55.72 per parcel  
11 for fiscal year 2006-07. As stated in the Report, the total budget for Location 2 for the fiscal year 2006-  
12 07 is \$82,577.00; there are 1482 parcels that are to be assessed. The annual assessment will be  
13 increased by the greater of two percent (2.0%) or the cumulative percentage increase, if any, in the  
14 Consumer Price Index for all Urban Consumers ("CPI-U") for the Los Angeles-Riverside-Orange  
15 County California Standard Metropolitan Statistical area ("Index") published by the Bureau of Labor  
16 Statistics of the United States Department of Labor. The annual CPI-U adjustment will be based on the  
17 cumulative increase, if any, in the Index as it stands on March of each year over the base Index for  
18 March of 2006. Any increase larger than the greater of 2.0% or the CPI-U annual adjustment requires  
19 a majority approval of all the property owners within Location 2. The Board of Supervisors will levy the  
20 assessment in each subsequent fiscal year until the Board of Supervisors undertakes proceedings for  
21 the dissolution of Location 2 of Zone 44 of L&LMD No. 89-1-C. The annual assessment will fund the  
22 services described in Section 4 of this Resolution. For further particulars, reference is to be made to the  
23 Report on file in the Office of the Clerk of the Board of Supervisors.

24           **Section 6.    The Property to be Annexed.** The property to be annexed into Zone 44 of  
25 L&LMD No. 89-1-C is Location 2. The boundaries of Location 2 are located within the unincorporated  
26 area of the County and are described and shown in the Report and Exhibit "A".

1       **Section 7.    Report.** The Report, which is on file with the Clerk of the Board of Supervisors  
2 and which has been presented to the Board of Supervisors, is hereby approved. Reference is made to  
3 the Report for a full and detailed description of the services, the boundaries of Location 2, and the  
4 annual assessment to be levied upon assessable lots and parcels within Location 2 proposed to be  
5 annexed to L&LMD No. 89-1-C.

6       **Section 8.    Public Hearing.** The question of whether Location 2 shall be annexed into Zone  
7 44 of L&LMD No. 89-1-C and an annual assessment levied beginning with fiscal year 2006-07 shall be  
8 considered at a public hearing (hereinafter the "Public Hearing") to be held on June 6, 2006, at 9:30  
9 a.m. at the meeting room of the Board of Supervisors of the County at 4080 Lemon Street, 1<sup>st</sup> Floor,  
10 Riverside, California.

11       **Section 9.    Majority Protest.** Each owner of record of property within Location 2 is to  
12 receive by mail a ballot that shall conform to the requirements of Section 4 of Article XIID and Section  
13 4000 of the California Elections Code. The ballots are to be returned prior to the Public Hearing.  
14 L&LMD No. 89-1-C shall not impose assessments on property within the boundaries of Location 2 if  
15 there is a majority protest with regard to the annexation of Location 2. A majority protest exists if, upon  
16 the conclusion of the Public Hearing, the tabulation of the ballots submitted in opposition to the  
17 annexation and assessment of Location 2 exceeds the ballots in favor of the annexation and  
18 assessment of Location 2.

19       **Section 10. Information.** Any property owner desiring additional information regarding  
20 Location 2 of Zone 44 of L&LMD No. 89-1-C, the Report, or the proposed assessment is to contact Ms.  
21 Judy A. Watterlond, Technical Engineering Unit Supervisor, Transportation Department of the County  
22 of Riverside, 4080 Lemon Street, 8th Floor, Riverside, California, 92501 or by telephone at (951) 955-  
23 6829.

24       **Section 11. Notice of the Public Hearing.** Notice of Public Hearing with regard to the  
25 annexation of Location 2 to Zone 44 of L&LMD No. 89-1-C shall be given consistent with Section 22626  
26 of the Streets and Highways Code and Section 4 of Article XIID. The Clerk of the Board of Supervisors

1 shall give notice of the Public Hearing by causing a certified copy of this Resolution to be published  
2 once in *The Press Enterprise* at least ten (10) days prior to the date of the Public Hearing that is June  
3 6, 2006. Publication of this Resolution is to be effected by the Clerk of the Board of Supervisors. Notice  
4 shall also be given by mailing first-class, postage prepaid, those notices, as prepared by County  
5 Counsel, ballot and information sheets as required by Section 4 of Article XIID and Section 4000 of the  
6 California Elections Code to all owners of record of property within Location 2 as shown on the last  
7 equalized assessment roll of the County. Mailing is to be made by the Engineer and deposited with the  
8 U. S. Post Office at least forty-five (45) days prior to the Public Hearing on June 6, 2006

9       **Section 12. Effective Date.** This Resolution shall take effect from and after its date of  
10 adoption.

FORM APPROVED  
COUNTY COUNSEL  
MAR 27 2006  
BY Alvin J. [Signature]

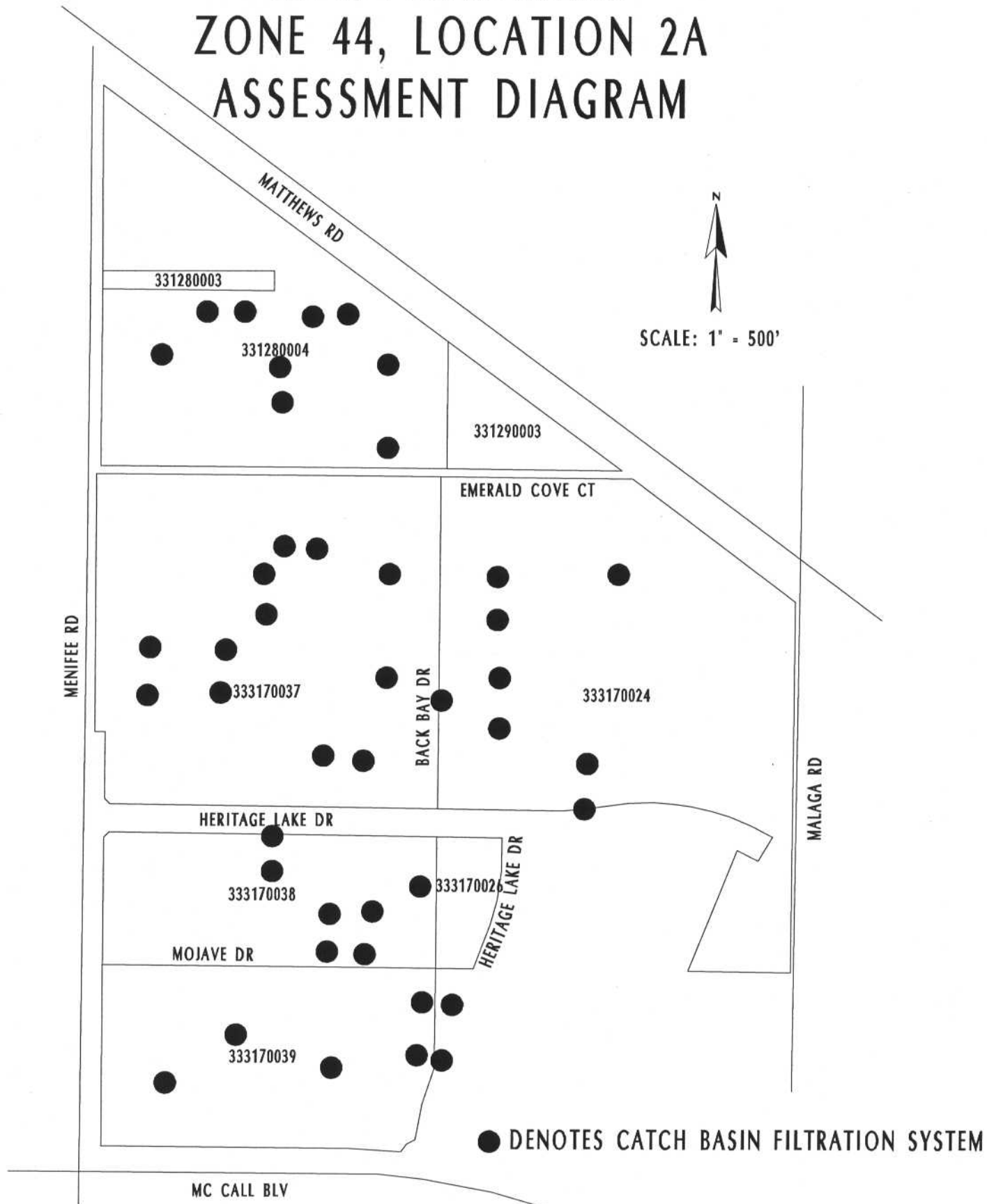
11  
12  
13  
14  
15  
16  
17  
18  
19  
20  
21  
22  
23  
24  
25  
26

**EXHIBIT "A"**

**DESCRIPTION OF BOUNDARIES**

The boundaries of Location 2 of Zone 44 to be annexed into Landscaping and Lighting Maintenance District No.89-1-Consolidated, of the County of Riverside are coterminous with the boundaries of Lots 1 through 493 as shown on Tract Map Nos. 31795, 31795-1, 31795-2, 31795-3 and 31795-4; Lots 1 through 379 as shown on Tract Map No. 31892; Lots 1 through 487 as shown on Tract Map Nos. 30322-1, 30808, 30808-1 and 30808-2; Lots 1 through 74 as shown on Tract Map No. 30996; and Lots 1 through 49 as shown on Tract Map No. 30791 in the County of Riverside, State of California for fiscal year 2006-07.

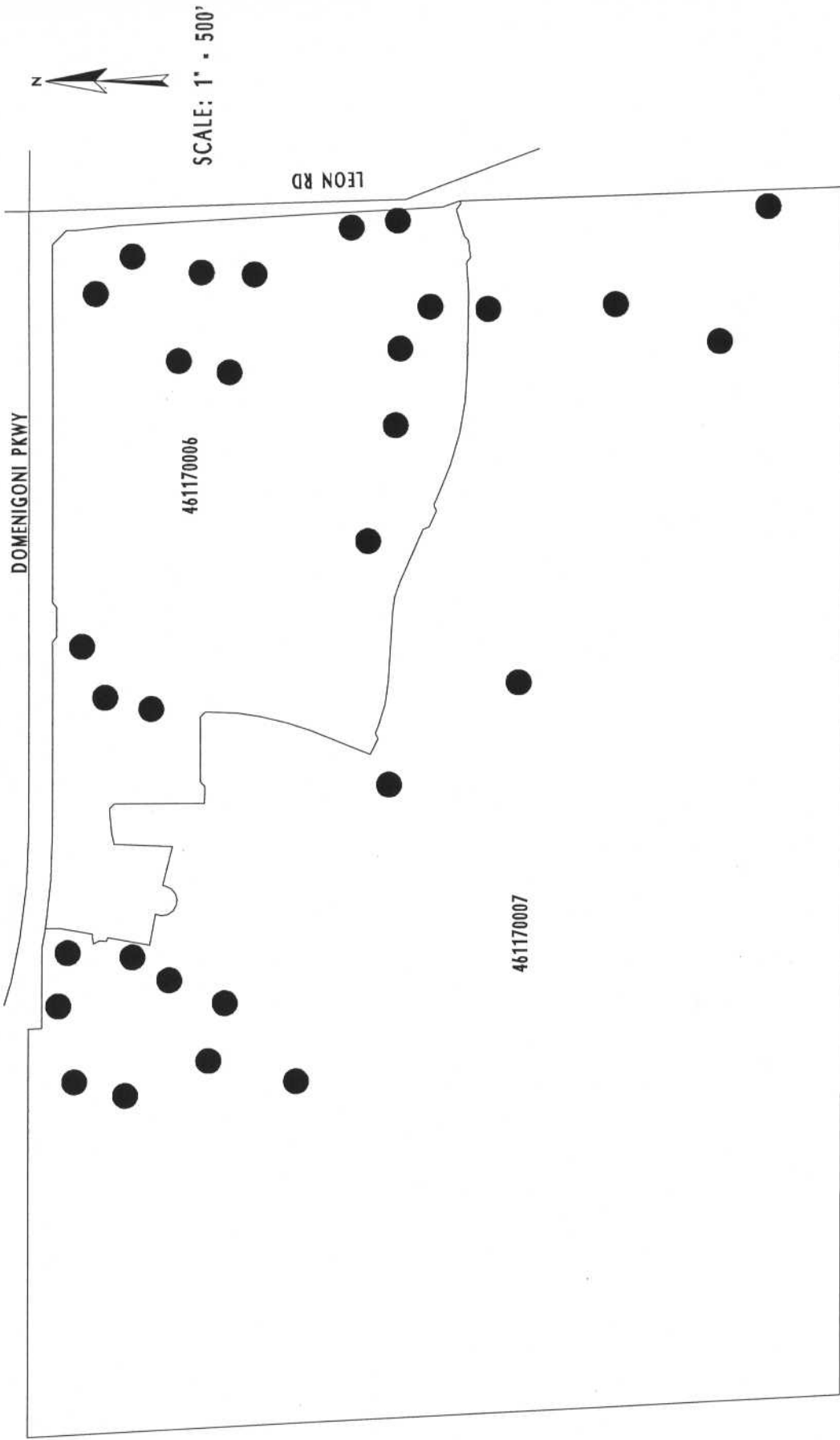
# LANDSCAPING AND LIGHTING MAINTENANCE DISTRICT NO. 89-1-CONSOLIDATED ZONE 44, LOCATION 2A ASSESSMENT DIAGRAM



This map was made by the Riverside County Geographic Information System. The map elements were produced by the Assessor and the Transportation and Land Management Agency which is comprised of the Transportation, Building & Safety, and Planning departments.  
MARCH 1, 2007

PORTION OF SECTIONS 13 & 24, T.5S., R.3W.  
TRACT NOS. 31795, 31795-1, 31795-2, 31795-3 & 31795-4  
493 PARCELS

LANDSCAPING AND LIGHTING MAINTENANCE DISTRICT NO. 89-1-CONSOLIDATED  
**ZONE 44, LOCATION 2B**  
 PORTION OF SECTION 31, T.5S.,R.2W.



● DENOTES CATCH BASIN FILTRATION SYSTEM

TRACT NO. 31892  
 379 PARCELS

**ASSESSMENT DIAGRAM**



This map was made by the Riverside County Geographic Information System. The map elements were produced by the Assessor and the Transportation and Land Management Agency which is comprised of the Transportation, Building & Safety, and Planning departments.

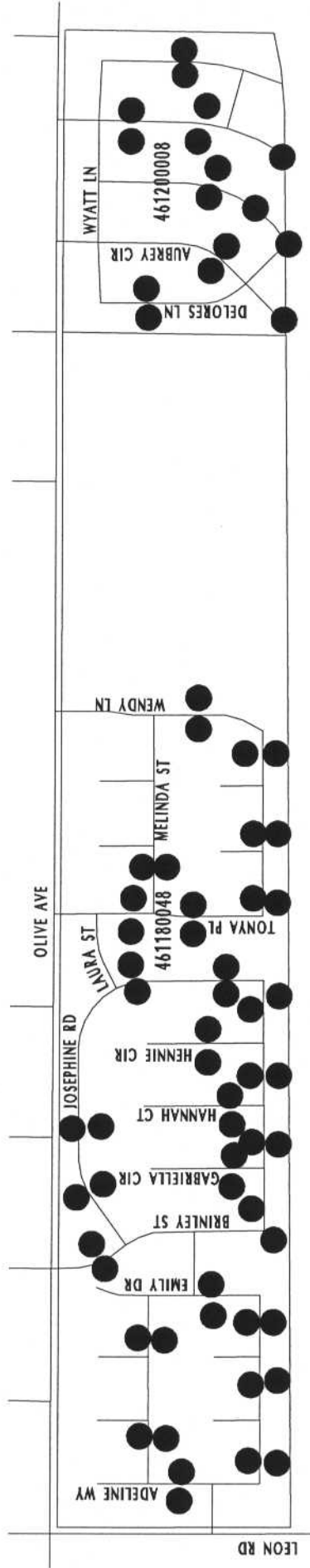
MARCH 6, 2006

# LANDSCAPING AND LIGHTING MAINTENANCE DISTRICT NO. 89-1-CONSOLIDATED ZONE 44, LOCATION 2C

PORION OF SECTIONS 32 & 33, T.5S., R.2W.  
TRACT NOS. 30322-1, 30808, 30808-1 & 30808-2  
487 PARCELS



SCALE: 1" = 700'



## ASSESSMENT DIAGRAM

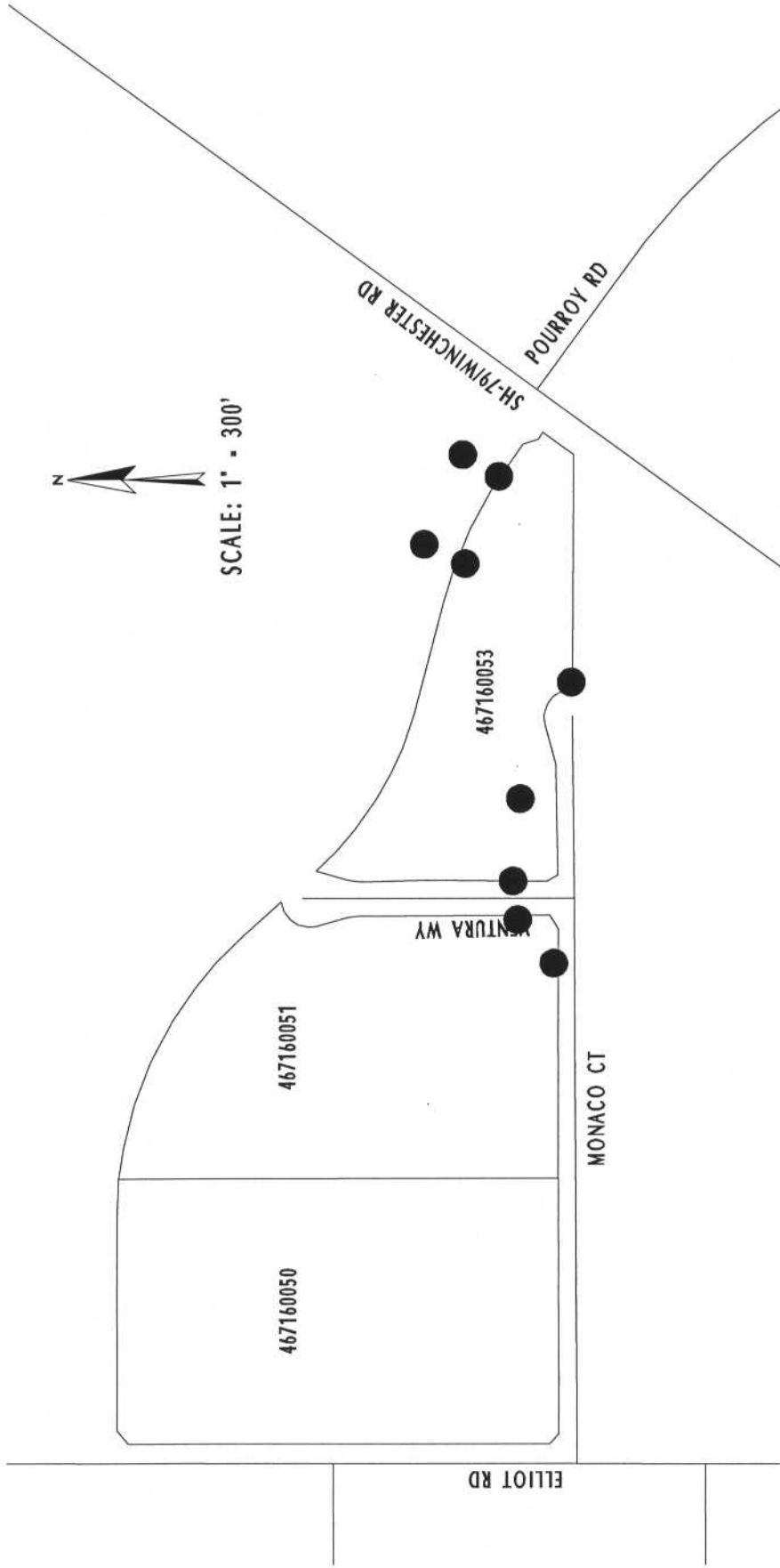


● DENOTES CATCH BASIN FILTRATION SYSTEM

This map was made by the Riverside County Geographic Information System. The map elements were produced by the Assessor and the Transportation and Land Management Agency which is comprised of the Transportation, Building & Safety, and Planning departments.

MARCH 6, 2006

LANDSCAPING AND LIGHTING MAINTENANCE DISTRICT NO. 89-1-CONSOLIDATED  
**ZONE 44, LOCATION 2D**  
 PORTION OF SECTION 29, T.6S., R.2W.  
 TRACT NO. 30996  
 74 PARCELS



## ASSESSMENT DIAGRAM



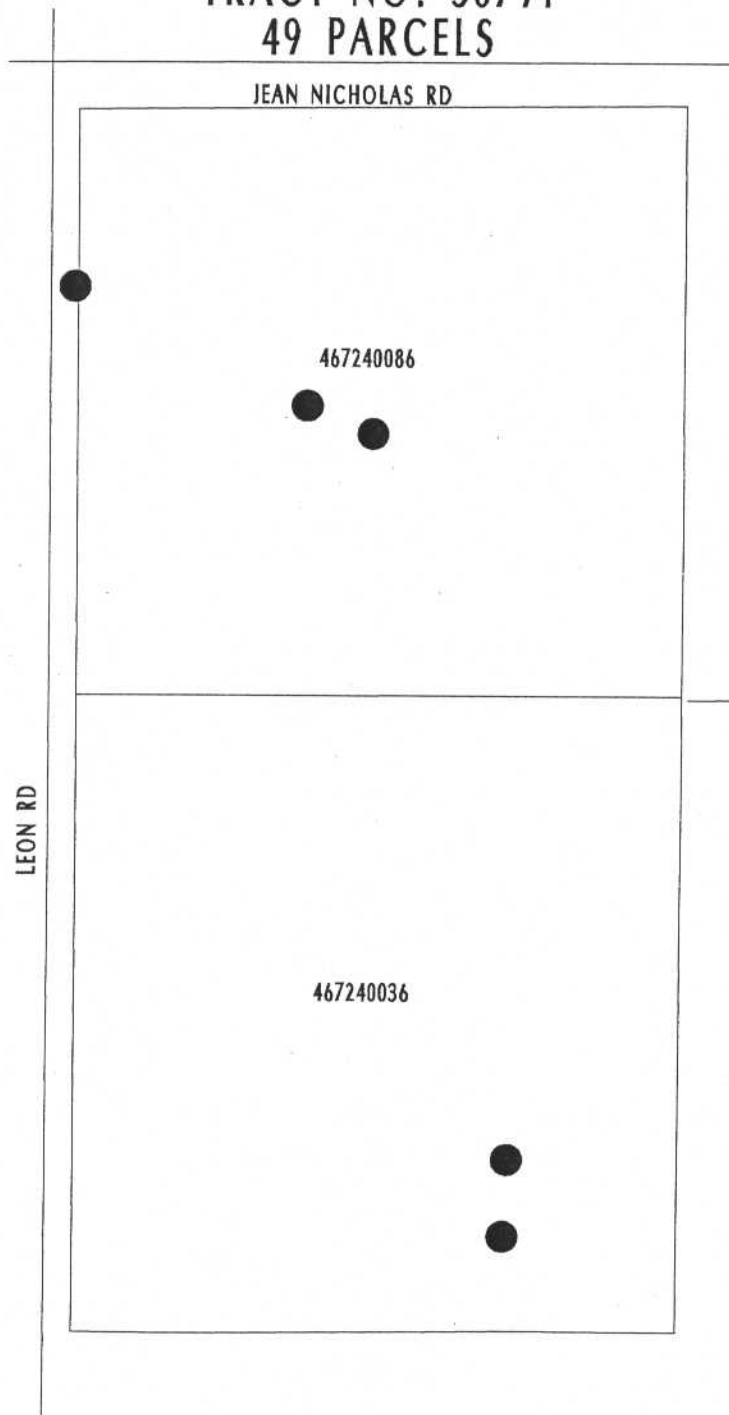
This map was made by the Riverside County Geographic Information System. The map elements were produced by the Assessor and the Transportation and Land Management Agency which is comprised of the Transportation, Building & Safety, and Planning departments.

MARCH 6, 2006

● DENOTES CATCH BASIN FILTRATION SYSTEM

LANDSCAPING AND LIGHTING MAINTENANCE DISTRICT  
NO. 89-1-CONSOLIDATED

**ZONE 44, LOCATION 2G**  
PORTION OF SECTION 32, T.6S.,R.2W.  
TRACT NO. 30791  
49 PARCELS



SCALE: 1" = 200'

● DENOTES CATCH BASIN FILTRATION SYSTEM



This map was made by the Riverside County Geographic Information System. The map elements were produced by the Assessor and the Transportation and Land Management Agency which is comprised of the Transportation, Building & Safety, and Planning departments.

MARCH 8, 2006'