

SUBMITTAL TO THE BOARD OF SUPERVISORS
COUNTY OF RIVERSIDE, STATE OF CALIFORNIA

546A



FROM: County Counsel
SUBJECT: Ordinance No. 348.4388

SUBMITTAL DATE: April 11, 2006

RECOMMENDED MOTION: That the Board of Supervisors adopt Ordinance No. 348.4388 amending the zoning in the Sedco-Wildomar Area shown on Map No. 2.2166 Change of Zone Case No. 6916.

BACKGROUND: Change of Zone Case No. 6916 was approved by the Board of Supervisors on April 4, 2006.


MINH TRAN
Deputy County Counsel

C.E.O. RECOMMENDATION:


Policy
 Policy

Consent
 Consent

Department Recommendation:
Per Executive Office:

County Executive Office Signature

APPROVE



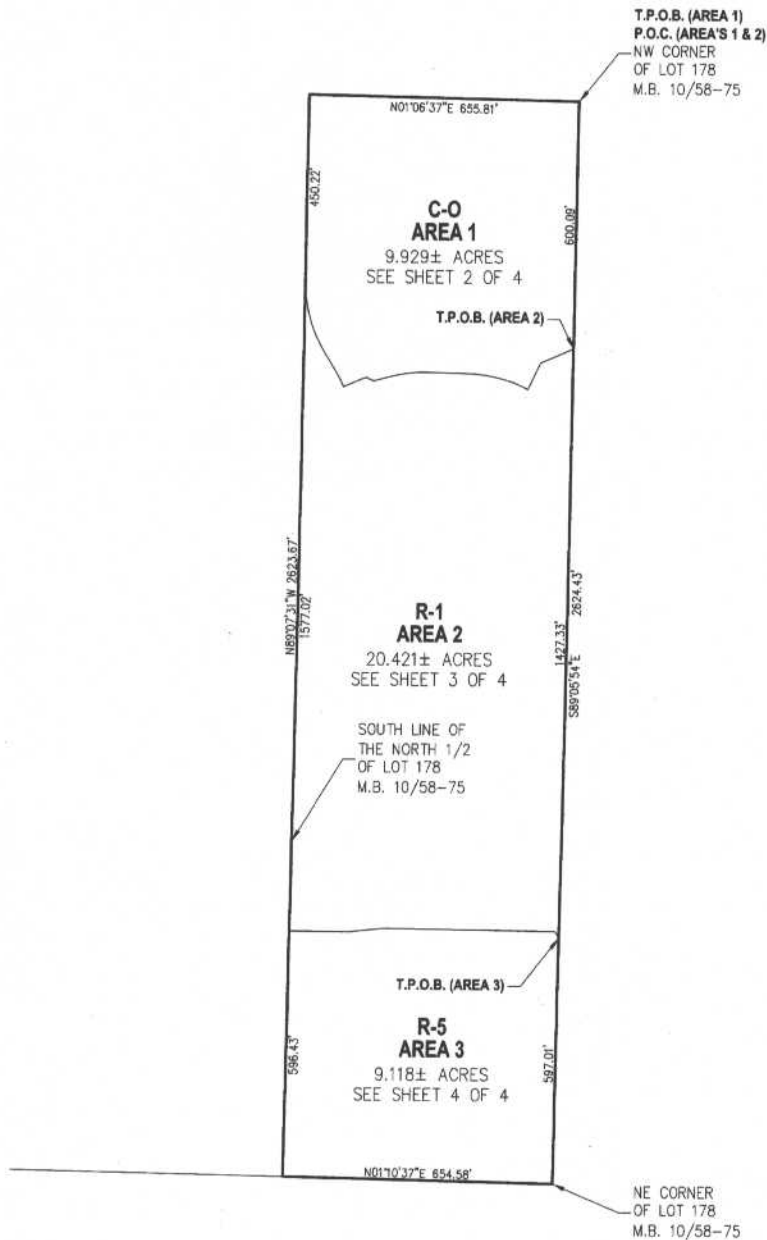
Prev. Agn. ref.

Dist. First

AGENDA NO.

0000 0606 10 00:00
RECEIVED RIVERSIDE COUNTY

SEDCO - WILDOMAR AREA
 PORTION OF SECTION 26, TOWNSHIP 6 SOUTH,
 RANGE 4 WEST, S.B.M.



LEGEND

- C-0 COMMERCIAL OFFICE
- R-5 OPEN AREA COMBINING ZONE RESIDENTIAL DEVELOPMENTS
- R-1 ONE FAMILY DWELLINGS (6500 SF MIN.)

MAP NO. 2.2166
 CHANGE OF OFFICIAL ZONING PLAN
 AMENDING

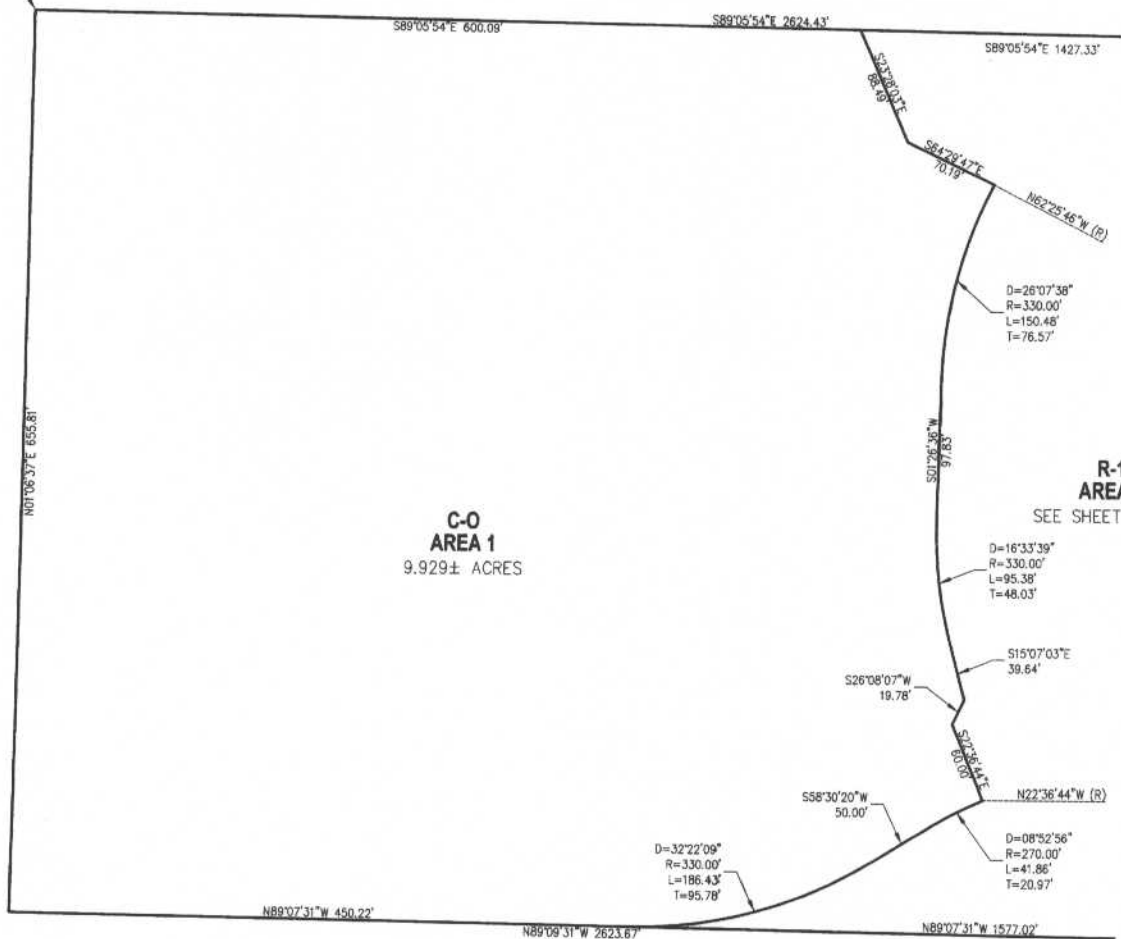
MAP NO. 2, ORDINANCE NO. 348
 CHANGE OF ZONE CASE NO. 6916
 ADOPTED BY ORDINANCE NO. 348.4388
 DATE: APRIL 25, 2006
 RIVERSIDE COUNTY BOARD OF SUPERVISORS



SCALE: 1"=200'
 0 200

SEDCO - WILDOMAR AREA
 PORTION OF SECTION 26, TOWNSHIP 6 SOUTH,
 RANGE 4 WEST, S.B.M.

T.P.O.B. (AREA 1)
 P.O.C. (AREA'S 1 & 2)
 NW CORNER
 OF LOT 178
 M.B. 10/58-75



LEGEND

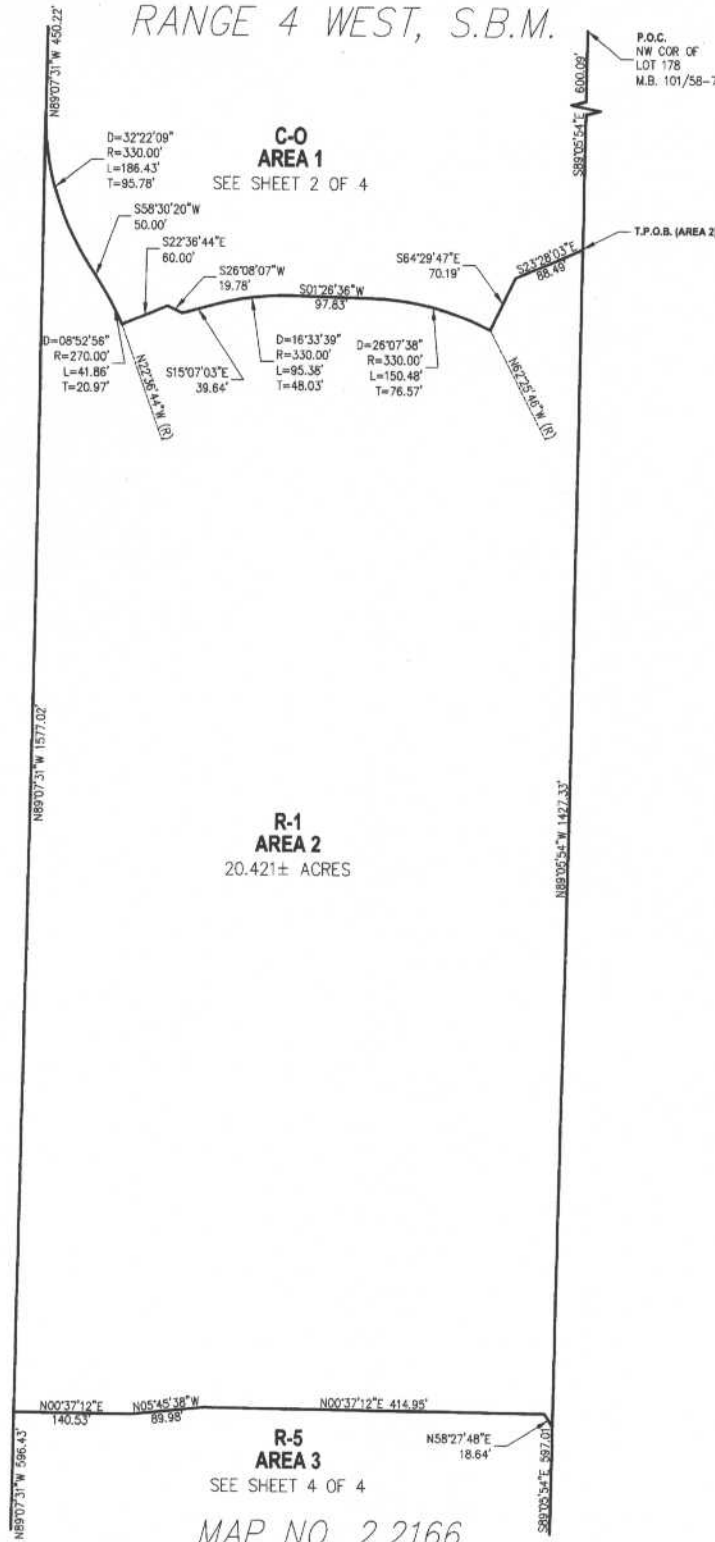
- C-0 COMMERCIAL OFFICE
- R-5 OPEN AREA COMBINING ZONE RESIDENTIAL DEVELOPMENTS
- R-1 ONE FAMILY DWELLINGS (6500 SF MIN.)

MAP NO. 2.2166
 CHANGE OF OFFICIAL ZONING PLAN
 AMENDING
 MAP NO. 2, ORDINANCE NO. 348
 CHANGE OF ZONE CASE NO. 6916
 ADOPTED BY ORDINANCE NO. 348.4388
 DATE: APRIL 25, 2006
 RIVERSIDE COUNTY BOARD OF SUPERVISORS

APN # 367-140-007
 367-140-011



SEDCO - WILDOMAR AREA
 PORTION OF SECTION 26, TOWNSHIP 6 SOUTH,
 RANGE 4 WEST, S.B.M.



LEGEND

- C-0 COMMERCIAL OFFICE
- R-5 OPEN AREA COMBINING ZONE RESIDENTIAL DEVELOPMENTS
- R-1 ONE FAMILY DWELLINGS (6500 SF MIN.)

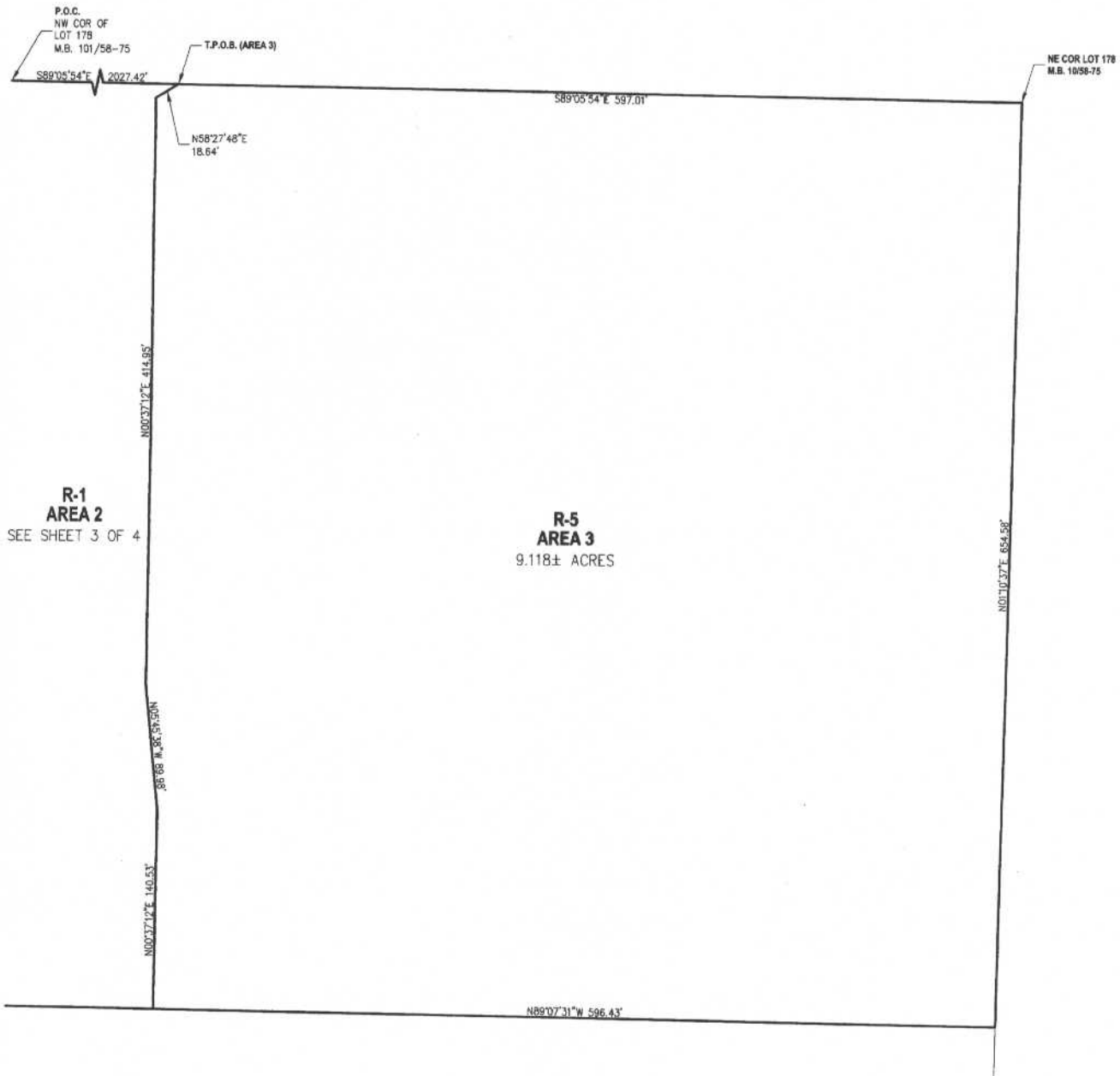
MAP NO. 2.2166
 CHANGE OF OFFICIAL ZONING PLAN
 AMENDING
 MAP NO. 2, ORDINANCE NO. 348
 CHANGE OF ZONE CASE NO. 6916
 ADOPTED BY ORDINANCE NO. 348.4388
 DATE: APRIL 25, 2006
 RIVERSIDE COUNTY BOARD OF SUPERVISORS

APN # 367-140-007
 367-140-011



SCALE: 1"=100'
 0 100

SEDCO - WILDOMAR AREA
 PORTION OF SECTION 26, TOWNSHIP 6 SOUTH,
 RANGE 4 WEST, S.B.M.



LEGEND

- [C-0] COMMERCIAL OFFICE
- [R-5] OPEN AREA COMBINING ZONE RESIDENTIAL DEVELOPMENTS
- [R-1] ONE FAMILY DWELLINGS (6500 SF MIN.)

MAP NO. 2.2166
 CHANGE OF OFFICIAL ZONING PLAN
 AMENDING

MAP NO. 2, ORDINANCE NO. 348
 CHANGE OF ZONE CASE NO. 6916
 ADOPTED BY ORDINANCE NO. 348.4388
 DATE: APRIL 25, 2006
 RIVERSIDE COUNTY BOARD OF SUPERVISORS

