

1021

822

**SUBMITTAL TO THE BOARD OF SUPERVISORS
COUNTY OF RIVERSIDE, STATE OF CALIFORNIA**



FROM: Department of Facilities Management

SUBMITTAL DATE:
May 2, 2006

SUBJECT: LAKE RIVERSIDE FIRE STATION – APPROVE SCHEMATIC DESIGN (Project # 20052428)

RECOMMENDED MOTION: That the Board of Supervisors:

1. Approve the schematic design, on file with the Department of Facilities Management, for the Lake Riverside Fire Station on the southwest corner of Lake Riverside Drive and Cahuilla Road.
2. Authorize the architect to proceed to the design development and construction document phases of the project.

BACKGROUND: Minute Order 3.23, dated October 18, 2005, approved the Architectural and Engineering agreement between the County of Riverside and WLC Architects and authorized the Chairperson to execute the agreement on behalf of the county. (Continued on Page 2)

ROBERT D. FIELD, Director
Department of Facilities Management

RDF:RB:jle

FINANCIAL DATA	Current F.Y. Total Cost:	\$ 0	In Current Year Budget:	N/A
	Current F.Y. Net County Cost:	\$ 0	Budget Adjustment:	N/A
	Annual Net County Cost:	\$ 0	For Fiscal Year:	05/06

SOURCE OF FUNDS: Western Riverside County Fire Facility Development Impact Fee Fund	Positions To Be Deleted Per A-30	<input type="checkbox"/>
	Requires 4/5 Vote	<input type="checkbox"/>

C.E.O. RECOMMENDATION:

APPROVE

County Executive Office Signature

Consent Policy
 Consent Policy

Dep't Recomm.:
 Per Exec. Ofc.:

Prev. Agn. Ref.: M.O. 3.23, 10/18/05;
 M.O. 3.41, 8/23/05; M.O. 16.3, 5/3/05;
 M.O. 3.9, 12/23/03.

District: 3

Agenda Number:

**ATTACHMENTS FILED
WITH THE CLERK OF THE BOARD**

3 . 26

FORM APPROVED COUNTY COUNSEL
 MAY 08 2006
 BY H. S. [Signature]
 Departmental Concurrence
 Reviewed by
 CIP TEAM

SCHEMATIC
DESIGN

Lake Riverside
Fire Station

Lake Riverside, CA

Exterior Elevations

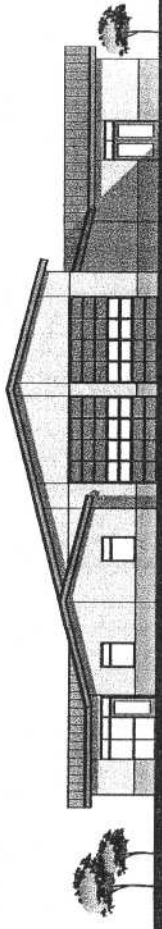
April 2006



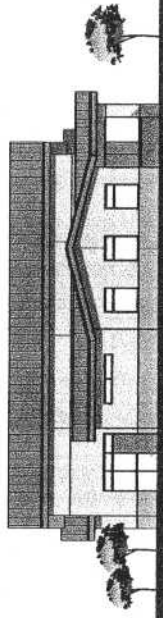
Architects

Virginia Dale Fawc
160th Foothill Bldg
Riviera Community
Colton, CA 95701-375
Tel: 909 827 8855
Fax: 909 960 9330

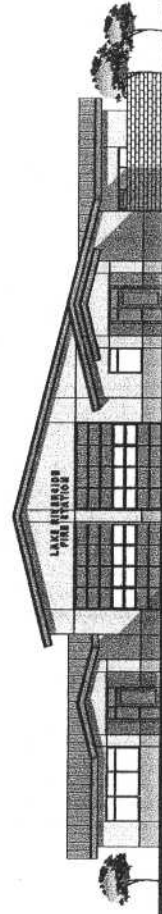
Walter Fawc
3001 2nd St
Colton, CA 95701-3851
Tel: 916 355 8977
Fax: 916 355 8558



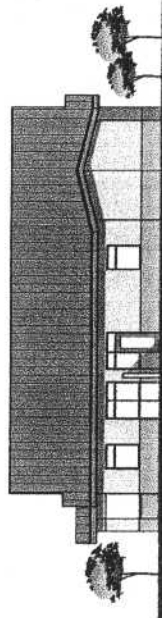
SOUTH ELEVATION



EAST ELEVATION



NORTH ELEVATION



WEST ELEVATION

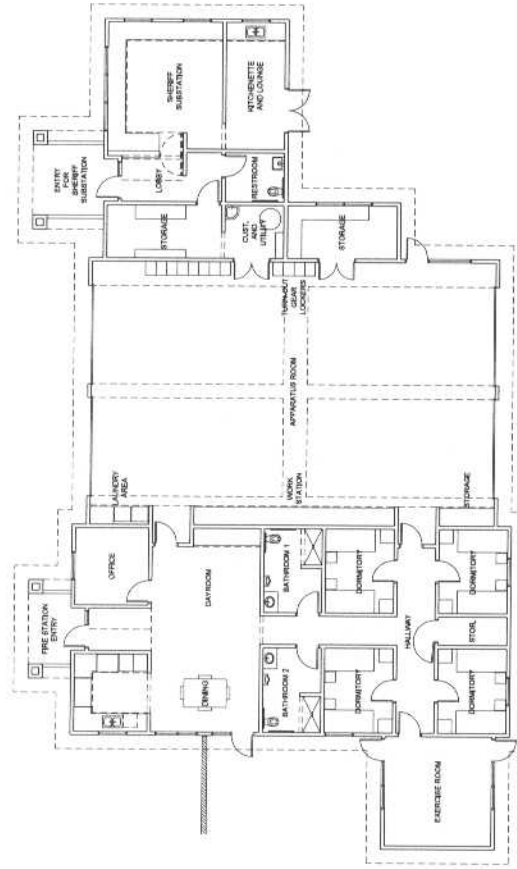
LAKE RIVERSIDE FIRE STATION

LAKE RIVERSIDE, CA

04/25/08



WLC
Architects
SOUTHERN CALIFORNIA
Virginia Dale Turner
11775 Rockwell Boulevard
Lake Riverside
California 91730-3754
tel: 909-827-0909
fax: 909-850-9930



FLOOR PLAN
E24611

LAKE RIVERSIDE FIRE STATION
FLOOR PLAN

04/25/08

SCALE: 1/8" = 1'-0"

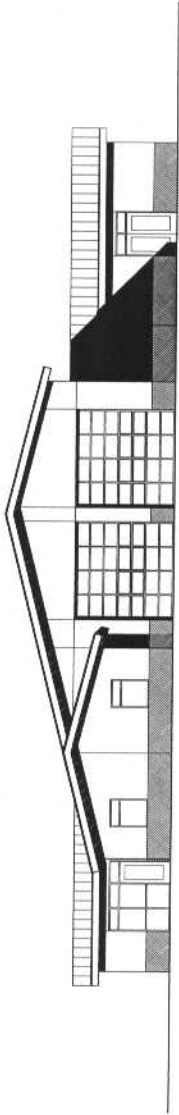


**LAKE RIVERSIDE
FIRE STATION**

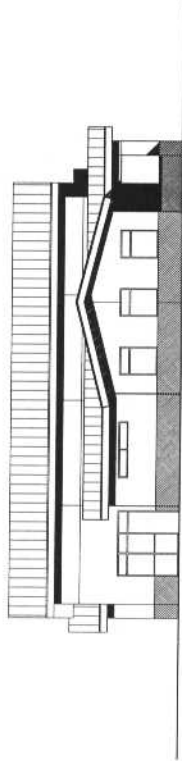
LAKE RIVERSIDE, CA

04/25/2008

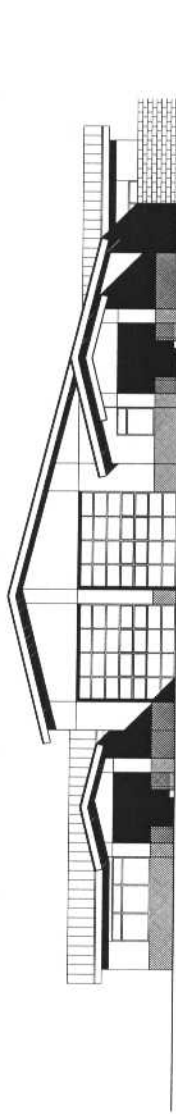
WLC
Architects
SOUTHERN CALIFORNIA
Virginia Dale Tower
10470 Piedmont Boulevard
California 91780-3154
Tel: 909-885-9999
Fax: 909-885-9980



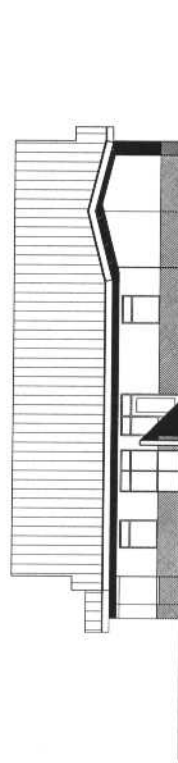
SOUTH ELEVATION



EAST ELEVATION



NORTH ELEVATION



WEST ELEVATION

LAKE RIVERSIDE FIRE STATION
EXTERIOR ELEVATIONS
SCALE: 1/8" = 1'-0"
04/25/2008



6'-0"



WLC Architects
 15151599 Palmdale Road
 15475 Franklin Blvd
 Brea, CA 92603
 California 91312-3154
 TEL: 909 887 8999
 FAX: 909 850 8880

15151599 Palmdale Road
 15475 Franklin Blvd
 Brea, CA 92603
 California 91312-3154
 TEL: 909 887 8999
 FAX: 909 850 8880

RIVERSIDE COUNTY FIRE STATION
 LAKE RIVERSIDE
 49948 HIGHWAY 371
 RIVERSIDE COUNTY, CALIFORNIA

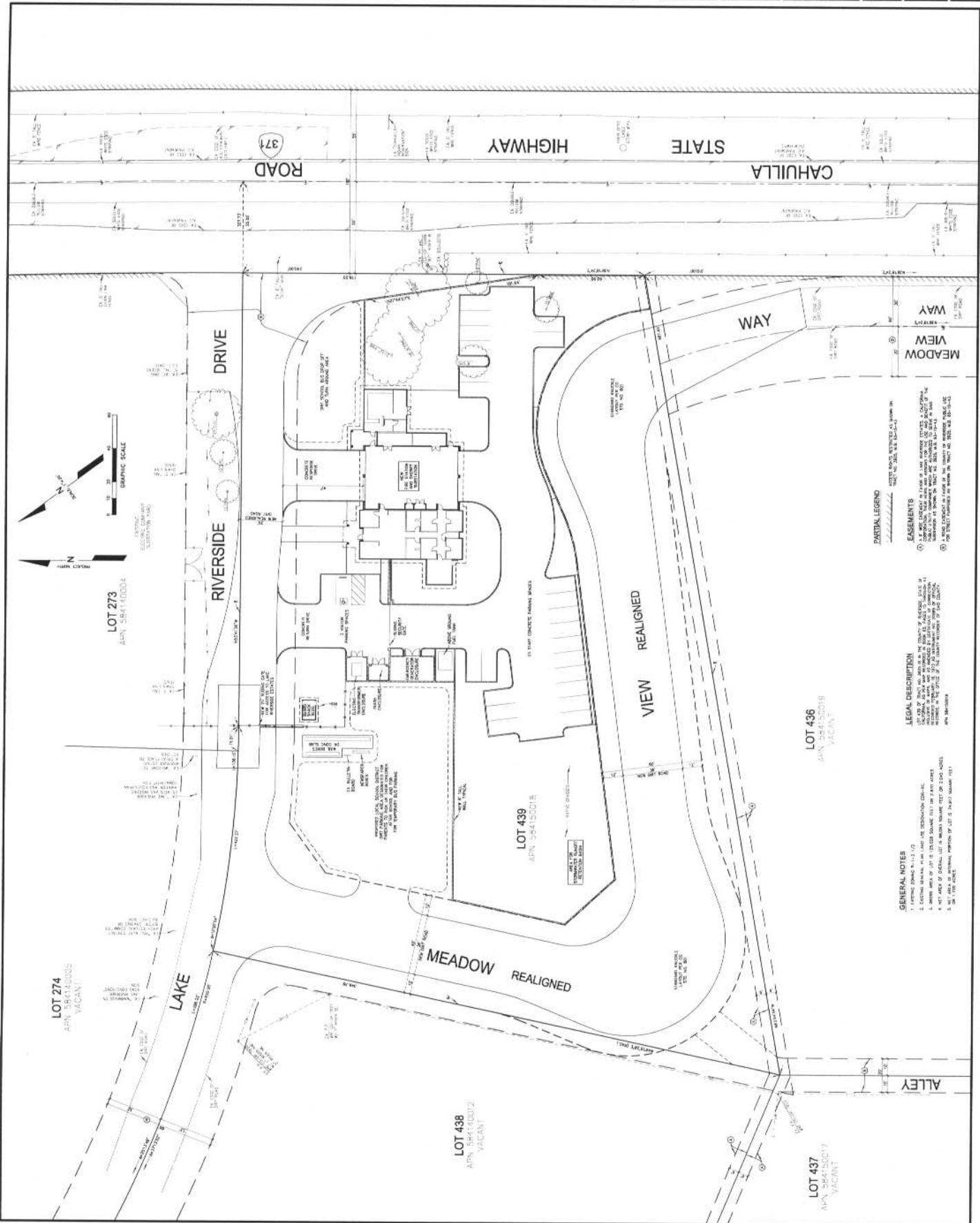


M/E ENGINEERING, INC.
 SPECIALIZING IN CIVIL DEVELOPMENT
 1000 W. GARDEN AVENUE, SUITE 200
 RIVERSIDE, CALIFORNIA 92507-1000
 TEL: 951 514 1100
 FAX: 951 514 1101

REVISIONS	
NO.	DATE BY DESCRIPTION

PROPOSED SITE PLAN	

DRAWING NUMBER: **C1**



PARTIAL LEGEND
 ① EXISTING ROADS RETAINED AS SHOWN ON PLAN
 ② EXISTING ROADS TO BE ABANDONED
 ③ EXISTING ROADS TO BE WIDENED
 ④ EXISTING ROADS TO BE RECONSTRUCTED
 ⑤ EXISTING ROADS TO BE RECONSTRUCTED AND WIDENED
 ⑥ EXISTING ROADS TO BE RECONSTRUCTED AND ABANDONED
 ⑦ EXISTING ROADS TO BE RECONSTRUCTED AND ABANDONED AND WIDENED
 ⑧ EXISTING ROADS TO BE RECONSTRUCTED AND ABANDONED AND WIDENED AND ABANDONED

EASEMENTS
 ① 10' EASEMENT FOR UTILITY LINES
 ② 10' EASEMENT FOR UTILITY LINES AND 5' EASEMENT FOR UTILITY LINES
 ③ 10' EASEMENT FOR UTILITY LINES AND 5' EASEMENT FOR UTILITY LINES AND 5' EASEMENT FOR UTILITY LINES
 ④ 10' EASEMENT FOR UTILITY LINES AND 5' EASEMENT FOR UTILITY LINES AND 5' EASEMENT FOR UTILITY LINES
 ⑤ 10' EASEMENT FOR UTILITY LINES AND 5' EASEMENT FOR UTILITY LINES AND 5' EASEMENT FOR UTILITY LINES
 ⑥ 10' EASEMENT FOR UTILITY LINES AND 5' EASEMENT FOR UTILITY LINES AND 5' EASEMENT FOR UTILITY LINES
 ⑦ 10' EASEMENT FOR UTILITY LINES AND 5' EASEMENT FOR UTILITY LINES AND 5' EASEMENT FOR UTILITY LINES
 ⑧ 10' EASEMENT FOR UTILITY LINES AND 5' EASEMENT FOR UTILITY LINES AND 5' EASEMENT FOR UTILITY LINES

LEGAL DESCRIPTION
 1. 10' EASEMENT FOR UTILITY LINES
 2. 10' EASEMENT FOR UTILITY LINES AND 5' EASEMENT FOR UTILITY LINES
 3. 10' EASEMENT FOR UTILITY LINES AND 5' EASEMENT FOR UTILITY LINES AND 5' EASEMENT FOR UTILITY LINES
 4. 10' EASEMENT FOR UTILITY LINES AND 5' EASEMENT FOR UTILITY LINES AND 5' EASEMENT FOR UTILITY LINES
 5. 10' EASEMENT FOR UTILITY LINES AND 5' EASEMENT FOR UTILITY LINES AND 5' EASEMENT FOR UTILITY LINES
 6. 10' EASEMENT FOR UTILITY LINES AND 5' EASEMENT FOR UTILITY LINES AND 5' EASEMENT FOR UTILITY LINES
 7. 10' EASEMENT FOR UTILITY LINES AND 5' EASEMENT FOR UTILITY LINES AND 5' EASEMENT FOR UTILITY LINES
 8. 10' EASEMENT FOR UTILITY LINES AND 5' EASEMENT FOR UTILITY LINES AND 5' EASEMENT FOR UTILITY LINES

GENERAL NOTES
 1. EXISTING DEMO TO BE DEMOLISHED
 2. EXISTING BUILDING TO BE DEMOLISHED AND RECONSTRUCTED
 3. EXISTING AREA OF LOT 273 TO BE RECONSTRUCTED AND WIDENED
 4. EXISTING AREA OF LOT 273 TO BE RECONSTRUCTED AND WIDENED AND ABANDONED
 5. EXISTING AREA OF LOT 273 TO BE RECONSTRUCTED AND WIDENED AND ABANDONED AND WIDENED

DEPARTMENT OF FACILITIES MANAGEMENT
Form 11: LAKE RIVERSIDE FIRE STATION – APPROVE SCHEMATIC
DESIGN (Project #20052428)

May 2, 2006
Page 2

BACKGROUND: (Continued)

The architects have now completed the schematics and have estimated the Order of Magnitude Costs range for the project at \$2.5 - \$2.6 million. A helipad will be completed separately once the appropriate location is identified. These costs will continue to be refined following the Board's approval to proceed into the design development and construction phases in accordance with the Capital Improvement Program (Board Policy B-22).