

SUBMITTAL TO THE BOARD OF SUPERVISORS  
COUNTY OF RIVERSIDE, STATE OF CALIFORNIA

575A



FROM: County Counsel

SUBMITTAL DATE: June 21, 2006

SUBJECT: Ordinance No. 348.4401

**RECOMMENDED MOTION:** That the Board of Supervisors adopt Ordinance No. 348.4401 amending the zoning in the Rancho California Area shown on Map No. 2.2172 Change of Zone Case No. 6924.

**BACKGROUND:** Change of Zone Case No. 6924 was previously adopted by the Board of Supervisors on June 6, 2006. There was a scrivener's error in the zoning map necessitating this re-adoption.

*Joe Rank*  
JOE RANK  
County Counsel

C.E.O. RECOMMENDATION:

APPROVE

County Executive Office Signature

*[Signature]*

Policy  
 Policy

Consent  
 Consent

Department Recommendation:  
Per Executive Office:

Prev. Agn. ref.

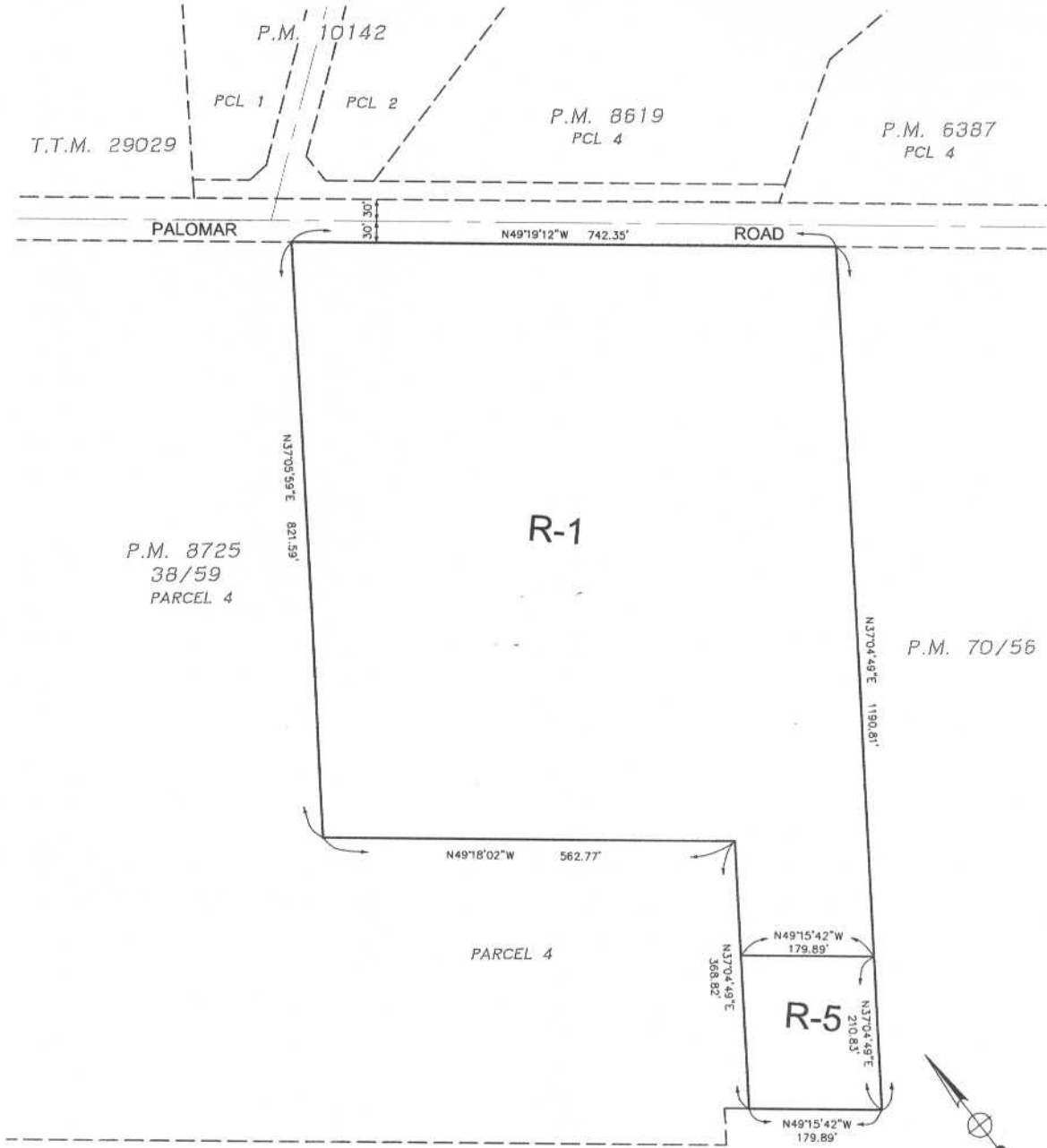
Dist. Third

AGENDA NO.

5008 7117 -2 VW11: S3  
RECEIVED RIVERSIDE COUNTY  
JUN 21 2006

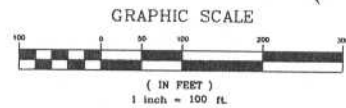


# RANCHO CALIFORNIA AREA SEC 1, T.7S, R.4W, S.B.B. & M



### LEGEND

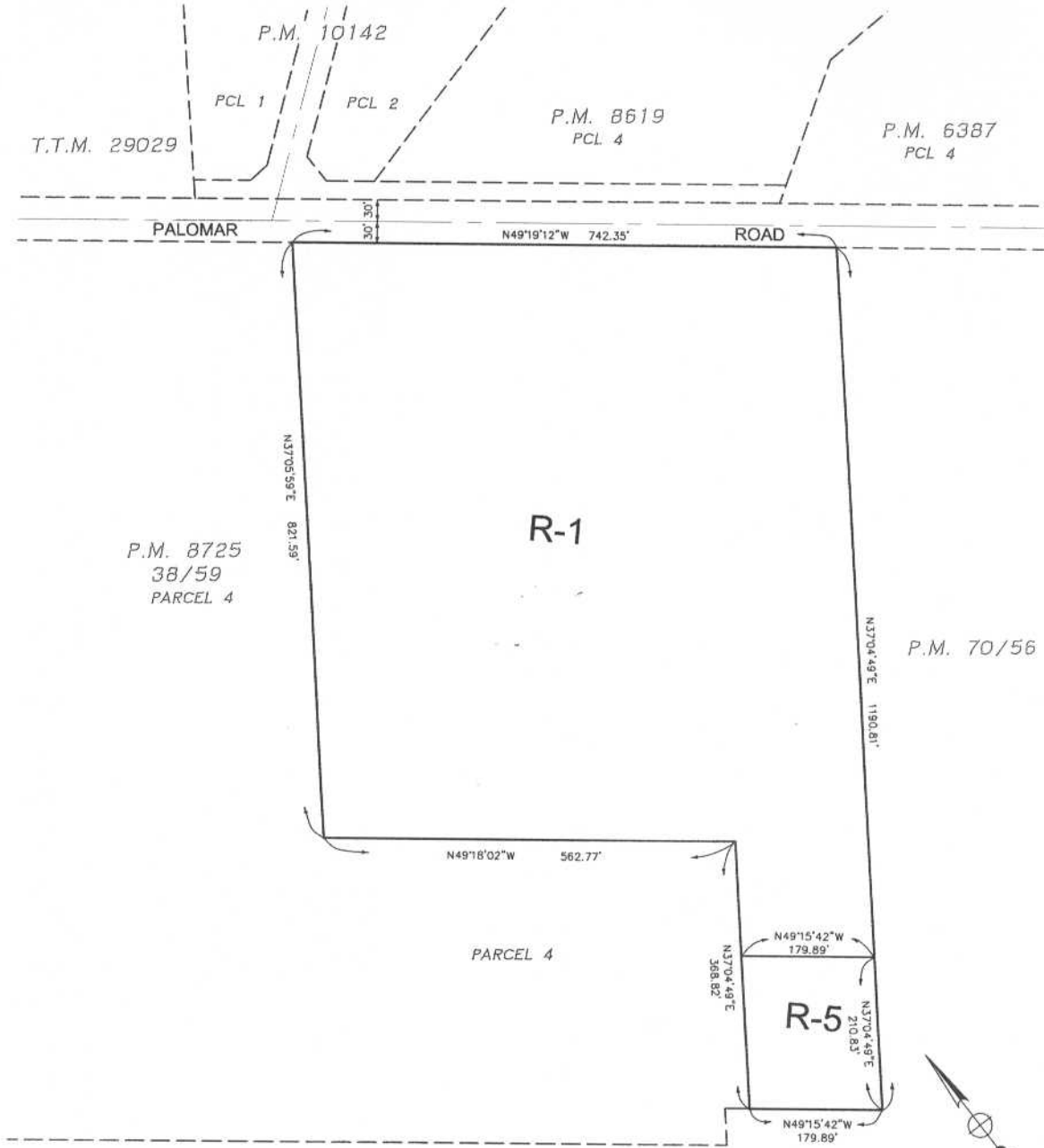
- R-1 ONE-FAMILY DWELLINGS
- R-5 OPEN AREA COMBINING ZONE-RESIDENTIAL DEVELOPMENTS



**MAP NO. 22172**  
**CHANGE OF OFFICIAL ZONING PLAN**  
**AMENDING**  
**MAP NO. 2, ORDINANCE NO. 348**  
**CHANGE OF ZONE CASE NO. 6924**  
**ADOPTED BY ORDINANCE NO. 348.4401**  
**DATE: JULY 11, 2006**  
**RIVERSIDE COUNTY BOARD OF SUPERVISORS**

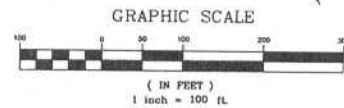
ASSESSOR PARCEL NUMBER: 580-080-008, 580-080-009, AND 580-140-001

# RANCHO CALIFORNIA AREA SEC 1, T.7S, R.4W, S.B.B. & M



### LEGEND

- R-1 ONE-FAMILY DWELLINGS
- R-5 OPEN AREA COMBINING ZONE-RESIDENTIAL DEVELOPMENTS



**MAP NO. 22172**  
**CHANGE OF OFFICIAL ZONING PLAN**  
**AMENDING**  
**MAP NO. 2, ORDINANCE NO. 348**  
**CHANGE OF ZONE CASE NO. 6924**  
**ADOPTED BY ORDINANCE NO. 348.4401**  
**DATE: JULY 11, 2006**  
**RIVERSIDE COUNTY BOARD OF SUPERVISORS**

ASSESSOR PARCEL NUMBER: 580-080-008, 580-080-009, AND 580-140-001