

**SUBMITTAL TO THE BOARD OF SUPERVISORS  
COUNTY OF RIVERSIDE, STATE OF CALIFORNIA**

605



**FROM:** Registrar of Voters

**SUBMITTAL DATE:**  
June 30, 2006

**SUBJECT:** June 6, 2006 Direct Consolidated Primary Election Recap

**RECOMMENDED MOTION:** That the Board of Supervisors receive and file the attached report.

**BACKGROUND:** The June 6, 2006 Primary Election marks Riverside County's 37<sup>th</sup> successful election using Direct Record Electronic (DRE) voting equipment. The Registrar of Voters deployed 2,935 new Edge II voting units with VeriVote printers to 587 polling places across the county to conduct the election. A total of 2,127 precinct officers and inspectors volunteered the day to staff polling places from 6:30 a.m. to 8:30 p.m. In addition, volunteers at collection sites throughout the county worked from 7:00 p.m. until as late as midnight when the last ballot box was collected.

The attached Election Recap presents a summary of the election processes and procedures employed by the Registrar of Voters in conducting the June 6, 2006 Direct Consolidated Primary Election.

Departmental Concurrence

*Barbara Dunmore*  
BARBARA DUNMORE, Registrar of Voters

<b>FINANCIAL DATA</b>	Current F.Y. Total Cost:	\$ n/a	In Current Year Budget:	n/a
	Current F.Y. Net County Cost:	\$ n/a	Budget Adjustment:	n/a
	Annual Net County Cost:	\$ n/a	For Fiscal Year:	n/a

<b>SOURCE OF FUNDS:</b>	Positions To Be Deleted Per A-30	<input type="checkbox"/>
	Requires 4/5 Vote	<input type="checkbox"/>

**C.E.O. RECOMMENDATION:**                      **APPROVE**

**County Executive Office Signature**

*James S. Huff*

- Consent
- Policy
- Consent
- Policy

Dept't Recomm.:  
Per Exec. Ofc.:

Prev. Agn. Ref.:

District: ALL

Agenda Number:

2.14

3002 707 -2 0411: 58  
RECEIVED RIVERSIDE COUNTY

### Executive Summary

The June 6, 2006 Direct Consolidated Primary Election marks Riverside County's **37<sup>th</sup> successful election** using Direct Record Electronic (DRE) voting equipment. However, many aspects of the election were implemented for the first time. Including:

- 3,050 new Edge II voting units compliant with the 2002 Voting Systems Standard
- VeriVote printers provided a voter verifiable paper audit trail (VVPAT) of every ballot cast on a DRE
- Utilization of the Indio Transmission Center to send vote data from the Coachella Valley to the central counting site in Riverside provided timely updates of desert contests
- Precinct results by voting unit were posted to the ROV website ([www.voteinfo.net](http://www.voteinfo.net)) on Election Night
- Election observers were provided summary vote data from the three redundant recordation devices (i.e., vote result cartridges, VeriVote paper trail, and directly from the voting unit memory)

Challenges were also encountered during the election cycle. Including:

- Recruitment of precinct officers and precinct inspectors to staff polling places on Election Day
- Posting precinct results at the close of polls on Election Day
- Voter participation on Election Day

Areas of improvement for November were identified, including:

- Ensuring delivery of Sample Ballot Pamphlets precede or coincide with the delivery of official ballots
- Increase publicity and awareness of mobile voting (R.O.V.E.R.) schedule
- Implement a bar-coding system to track voting inventory

The Election Recap report presents a summary of the election processes and procedures employed by the Registrar of Voters in conducting the June 6, 2006 Direct Consolidated Primary Election.

## Election Recap Report

### PRECINCT POSTING

Elections Code §19384 requires the results of votes cast at each polling place be posted conspicuously outside the polling place before the precinct board adjourns. Riverside County, along with other DRE counties, has previously been exempt from this requirement because DREs were not equipped with printers. Even prior to the implementation of DREs, the County was not subject to the requirements of EC §19384 because ballots were not counted at the polls.

The June 6, 2006 Direct Consolidated Primary Election is the first countywide election in which every DRE is equipped with a VeriVote printer (Sequoia Voting System's voter verifiable paper audit trail). On May 18, 2006, the Registrar of Voter's requested a waiver of EC §19384 from the Secretary of State citing concerns with retaining schools and residences as polling places, preserving the confidentiality of ballots cast, and timely reporting of results (letter is included as Attachment A). In the meantime, Riverside County DRE voting units were set to not automatically print precinct totals at the close of polls.

The Assistant Secretary of State for Elections responded to the Registrar on behalf of the Secretary on June 2, 2006 (received in the Registrar of Voter's office on June 7, 2006 and included as Attachment B). The response states that the Secretary of State does not have the authority to waive state law. However, it is recognized that the "...statute is antiquated, as it refers to old lever technology that is no longer in use in California and ...may be procedurally impossible for many modern voting systems." The Registrar was encouraged to involve all interested parties in designing a mutually agreeable solution that still serves the intent of the provision of the law.

### Election Observer Panel

Prior to each statewide election, counties utilizing voting systems are required to submit an Election Observer Panel (EOP) Plan to the Secretary of State. Riverside County's EOP Plan is Attachment C. The Plan provides for members of the county grand jury, political party central committee members, and media be invited to serve on the panel. Other groups expressing an interest may also be included at the Registrar's discretion.

The purpose of the EOP is to observe that established election procedures are followed, ensure that the election process is conducted transparently, and encourage participation and build voter confidence in the election process.

Central committee chairpersons and their nominees were appointed to the EOP. In addition, Democracy for America-Temecula Valley (DFA-TV) and Californians for Disability Rights were invited to serve. The Election Observer Panel membership is included as Attachment D though not all members were active observers. Mr. Tom Courbat representing DFA-TV was the EOP's key contact.

The most active observers included Mr. Doug Dye, Mr. Jerry Ewig, Mr. Art Cassel, Ms. L. Maxine Ewig, Mr. Dick Morris, and Mr. Kevin Akin. With the exception of Mr. Akin, the other active observers are also members of DFA-TV's "Save R Vote" project. The EOP members were provided departmental procedures for election processes and were provided sufficiently close access to enable them to observe and challenge whether the individuals were performing the processes according to established procedures (Elections Code §15000, et. seq.).

#### Precinct Auditable Voting Unit Results

On June 1, 2006, the Registrar of Voters and EOP met to determine what information the EOP needed, in the absence of precinct posting, to perform a meaningful audit and analysis of the June 6 election. The parties developed and agreed to a Precinct Auditable Voting Unit Results (P.A.V.U.R.) process (see Attachment E). The process provided the EOP with:

- ✓ The voting unit numbers assigned to each of the 587 precincts prior to Election Day (also posted to the ROV website);
- ✓ A summary of the votes cast per precinct and voting unit for every contest, candidate, and measure in electronic format on Election Night following the processing of the results cartridges (also posted to the ROV website);
- ✓ The summary results printed directly from the memory of voting units selected by the EOP (conducted June 26 on 55 voting units).

The P.A.V.U.R. process provided the EOP and the public precinct results for every precinct in the county—conceivably more data than could have been obtained had the county posted results at the precincts.

The Registrar will present the success of the P.A.V.U.R. program to the California Association of Clerks and Election Officials (CACEO) as a proposed legislative solution to keeping pace with today's voting systems and technology.

#### Recordation of Vote Data

When a ballot is cast on an Edge II DRE voting unit, the vote data is recorded on three different mediums: the vote results cartridge, the paper audit trail (via the VeriVote printer), and the voting unit internal memory. For the first time, the vote data from all three recordation mediums was generated by the Registrar of Voters and audited.

- Vote results cartridges – vote data recorded on the cartridges produced Election Night results
- Paper Audit Trail – used to conduct a manual tally of 1% of the precincts in the election
- Voting unit internal memory – printed from 55 voting units and compared to Election Night results

## PRIMARY ELECTION

The June 6, 2006 Direct Consolidated Primary Election marks the **37<sup>th</sup> successful election** conducted in Riverside County using Direct Record Electronic (DRE) voting equipment. It was the first countywide election using the newly-purchased Edge II voting units equipped with VeriVote printers (Sequoia Voting System's paper audit trail). The VeriVote provides a paper record copy of the voter's selections under a clear plexi-glass for the voter to verify before casting their ballot. The paper record copies are stored along with other election materials in accordance with the Elections Code.

### Change of Primary Election Date

The June 2006 Direct Consolidated Primary Election was the first primary election held in June since 1998. Senate Bill 1730 (Chapter 817, Statutes of 2004) changed the month for primary elections to eliminate the eight-month gap between the primary and general election and to keep voters interested in the election process and reduce campaign costs by shortening the campaign cycle.

The Secretary of State predicted a 38 percent voter turnout. However, statewide voter turnout was about 30 percent—the lowest recorded turnout in California history. Only 26.75 percent of Riverside County registered voters cast a ballot in the Primary; of those, 48 percent cast an absentee ballot. June is a month of final exams, graduations, promotions, and vacations that may have distracted voters from going to the polls. The absence of hotly contested races or measures may have also affected turnout.

## PRE-ELECTION

The week of March 27, 2006, the ROV received the first shipment of new Edge II voting units with VeriVote (Sequoia Voting System's Voter Verified Paper Audit Trail (VVPAT) printer). The units were subjected to a series of tests and used to conduct the Rancho Mirage Municipal Election on April 11. Subsequent shipments completed the complement of 3,050 Edge II units, 4,440 VeriVotes, and 740 audio units needed to conduct the June 6 Election.

Public logic and accuracy (L & A) testing was conducted on a sample of the electronic voting units and the paper ballot readers. Every contest and every candidate were voted from an electronic script to verify the recordation accuracy of the units and the tally server. In addition, observers filled out facsimile ballots that were manually entered into a voting unit in English and Spanish and using the audio unit. Every voting unit used in an election undergoes L & A testing before being deployed to a polling site.

Early Voting

May 8 was the first day voters could cast an absentee ballot or vote early.

*Absentee Ballots:* The first day to cast an absentee ballot was May 8. A total of 201,987 voters (nearly 27% of all registered voters) were issued absentee or mail ballots; of those, 50% were returned. Elections Code §15101 permits the verification of voters' signatures on absentee envelopes to begin 29 days prior to the election and the opening of the absentee envelopes during the 7 days prior to the election. Observation of the absentee ballot processing and counting is open to the public and the Registrar is required to notify the public at least 48 hours prior to the commencement of processing.

Absentee ballot processing (i.e., sorting absentee ballot envelopes, data entry, signature verification, opening absentee ballots, and tabulation) began on May 24 (see Attachment F for public notification). With the exception of tabulation, video taping and photography were not permitted to ensure the confidentiality of voter information appearing on the absentee envelopes.

*Mail Ballot Precincts:* Three hundred forty (340) mail ballot precincts were established for the Primary Election. Mail ballot precincts serve areas without sufficient voters to establish a polling place and are handled as absentee ballots (see absentee ballots above).

Table 1: Absentee Ballots Issued by Type

Absentee Type	Issued		Returned	
	Number	Percent	Number	Percent
<b>Total</b>	<b>201,987</b>	<b>26.97%</b>	<b>101,024</b>	<b>50.02%</b>
Permanent	149,530	74%	n/a	n/a
Mail Precinct	27,081	13.4%	n/a	n/a
Mail Request	17,941	8.9%	n/a	n/a
Counter Request	4,584	2.3%	n/a	n/a
Military	1,565	<1%	n/a	n/a
Overseas	1,286	<1%	n/a	n/a
n/a=not available				

Elections Code provides for absentee ballots to be mailed to voters no sooner than 40 days prior to an election (May 8) and no later than 7 days prior to an election (May 30). Riverside County's first absentee ballots were placed in the mail on May 11, 2006 for delivery to voters. May 30 was the last day for voters to request an absentee ballot to be mailed to them. The ROV's goal is to have absentee ballots in the mail on the first day of the absentee period.

*ROV Lobby:* May 29 – June 6 voting units were available in the ROV lobby for voters to vote early. Paper/absentee ballots were also available.

*Regional Early Voting Sites:* May 20 – 28 voters were afforded the opportunity to vote early at three regional sites: the Galleria at Tyler in Riverside, the Promenade in Temecula, and a new site at the UCR Palm Desert Campus (Attachment G contains the early voting schedule). Citing movement of businesses and limited space availability, *Westfield's Shopping Town* in Palm Desert declined the ROV's request to offer early voting at the mall in June.

A total of 2,395 votes were cast at regional early voting sites (912 at the Galleria, 908 at the Promenade, and 575 at UCR Palm Desert).

Table 2: Ballots Cast at Early Voting Site

Early Voting Site	Ballots Cast
ROV Lobby (East Riverside)	1,263
The Promenade (Temecula)	908
The Galleria (Riverside)	912
U.C.R. Palm Desert Campus	575
R.O.V.E.R. (mobile voting site)	102

*R.O.V.E.R.:* The County's mobile voting site, R.O.V.E.R., offered early voting in eight communities from Wildomar to Blythe prior to Election Day (Attachment H is a copy of the mobile voting schedule). A total of 102 votes were cast at the mobile voting sites with the greatest number of votes (31) cast in Hemet on May 31.

Table 3: Ballots Cast on R.O.V.E.R. by Date and Community

Community	Date	Ballots Cast
Palm Springs	May 09, 2006	14
Wildomar	May 13, 2006	7
Hemet	May 15, 2006	17
Univ. CA Riverside	May 18, 2006	10
Corona/Norco	May 26, 2006	10
Cabazon	May 30, 2006	7
Hemet	May 31, 2006	31
Blythe	June 2, 2006	6

The Sample Ballot Pamphlet directed voters to the ROV website for the R.O.V.E.R. schedule. The ROV also partnered with the mobile voting locations to publicize early voting. Better advertising of the mobile voting schedule will be undertaken for the November General Election to make voters aware of this opportunity to vote early and conveniently.

## ELECTION DAY

The Direct Consolidated Primary Election was conducted on June 6, 2006.

### Polling Places and Precinct Officers

Five hundred eighty-seven (587) polling places were established throughout the county to conduct the election. Each polling place was equipped with five (5) Edge II voting units with VeriVote and staffed with 4 to 5 volunteer precinct officers. Seventy-eight roving range inspectors were responsible for 6-8 polling places each on Election Day.

ROV procedures require one precinct inspector and three precinct officers (the former with lead responsibility) at each polling place. Twenty-five (25) days prior to the election, the ROV still needed 600 precinct officers to fulfill the policy quota. The change in election date for the Primary Election from March to June affected the ROV's ability to recruit volunteers. Student poll workers were unavailable as they prepared for final exams, graduations and family vacations. In November 2005, 240 students were poll workers compared to 42 in June 2006. The greatest void experienced was in the desert area where residents tend to depart for cooler locales when temperatures rise.

In May 2006, the Board of Supervisors increased Election Day pay for precinct officers from \$65 to \$90 and precinct inspectors pay from \$100 to \$125 in an effort to attract more volunteers and bring Riverside County in line with stipends paid by surrounding counties. However, on Election Day a deficit of 221 precinct officers still existed.

Election Code §12304 requires a minimum of one precinct inspector and two precinct officers at each polling site. The ROV was able to spread existing precinct officers across all polling places to meet the requirements of the statute. However, two polling places opened with only an inspector present on Election Day after assigned precinct officers failed to show up. In both cases, voters were recruited to fill the void, as permitted in Elections Code §12313, while ROV staff worked to reassign precinct officers from fully staffed polling places. Service to voters was unaffected due to the low voter turnout.

### Ballots

Seventy-six (76) different ballot types consisting of 99 different contests and 150 candidates (including one qualified write-in candidate) were required to conduct the election. Each Edge II voting unit was programmed with the ballot specific to its assigned voting precinct. Provisional ballots were cast on Edge II voting units. Approximately four thousand six hundred (4,600) provisional ballots were cast.

Table 4: Number of Contests/Measures by Party

JURISDICTION	Number of Contests/Measures by Party						
	DEM	REP	AIP	GRN	LIB	PF	NP*
Federal	5	5	6	7	9	9	-
State	16	16	1	1	2	2	-
State (NP) Contest	-	-	-	-	-	-	1
State Measure	-	-	-	-	-	-	2
Local Contest	-	1	-	-	-	-	10
Local Measure	-	-	-	-	-	-	6
TOTAL	21	22	7	8	11	11	19

\*all partisan ballots contain non-partisan contests

### Paper Ballots

A directive from the Secretary of State on April 7, 2006 (Attachment I) required any county using a Direct Record Electronic (DRE) voting system to provide an adequate supply of paper ballots in the event of a temporary loss of the ability to use electronic equipment or if a voter chose not to vote on a DRE. Absentee ballots or other option(s) could be used including sample ballot facsimiles as determined reasonable by the elections official. The latter was used in Riverside County. One hundred ninety-eight (198) paper ballots and fifty-three (53) paper provisional ballots were requested at the polls amounting to one-quarter of one percent (.0025) of all ballots cast at the polls. This is less than in previous elections when required (i.e., 1% in November 2004 and <1% in November 2005) reflecting voters' expectation to vote on a DRE at the polls.

Paper ballots voted at the polls were treated with the same respect and privacy afforded absentee ballots. In accordance with Elections Code §15104 the removal of the paper ballots from their identification envelopes was open to the public. The paper ballots were unfolded after the envelopes were removed from the opening room. The ballots were duplicated onto a publicly-viewable DRE equipped with a VeriVote. The DRE ensured accuracy and provided an audit trail for every ballot duplicated (see Picture Gallery 1).

### Performance of Voting Units

ROV technical support received 64 trouble calls from precinct officers on Election Day. Twenty-seven (27) of the issues were resolved and voting continued; while 37 went unresolved resulting in those units being taken out of service.

### Trouble Call Subjects:

Touch screen.....	15
Card slot.....	3
Error message.....	16
Power related.....	10
VeriVote.....	7
Other.....	13

**ELECTION NIGHT TALLYING**

Video taping and photography of all Election Night activities is permitted.

Collection Centers

Seventeen (17) collection centers were established for the Election. All collection centers were supplied with a U-Haul truck with the exception of Blythe. Collection centers assigned to receive ballot cartridges from over 30 precincts were also supplied with a sedan and those collecting from over 60 precincts were assigned two sedans (see Table 5). The schedule provided for collection centers with sedans to transport all ballot cartridges collected by 9:15 p.m. (via sedan) to the ROV in Riverside or the Indio Transmission Site. The second sedan at a collection center was to leave at 9:45 p.m.

All U-Hauls were to wait until the last ballot cartridge was collected to transport the ballot boxes and VeriVotes to Riverside and the results cartridges to either Indio or Riverside. Ballot cartridges in Blythe were picked up by a Sheriff's Deputy at the collection center and transported to the Indio transmission site.

Upon presentation of the sealed red transport bag by the precinct inspector, collection center personnel inventoried the cartridges viewable through the clear vinyl pocket and issued a receipt to the precinct inspector.

Table 5: Collection Center Assigned Precincts and Transport Vehicles

Collection Center	Number of Precincts	Transport Vehicles
<b>Riverside Central Counting</b>		
Bank of America (Riverside )	39	U-Haul/Sedan
Riverside Plaza Parking Lot (Riverside)	27	U-Haul
Sam's Club Parking Lot (Riverside)	93	U-Haul
Sheriff Station (Rubidoux)	17	U-Haul
State Bros. Parking Lot (Riverside)	19	U-Haul
CAC (Corona)	66	U-Haul+ 2 Sedans
Sheriff Station (Lake Elsinore)	29	U-Haul
Three Lakes Municipal Court (Perris)	22	U-Haul
Sam's Club Parking Lot (Murrieta)	69	U-Haul+ 2 Sedans
Webb Hall (Sun City)	26	U-Haul
EDA Workforce Development (Hemet)	48	U-Haul/Sedan
DPSS (Banning)	18	U-Haul
Fire Station #37 (Desert Hot Springs)	10	U-Haul
<b>Indio Transmission Center</b>		
CAC (Blythe)	4	Sheriff Patrol Car
EDA Workforce Development (Indio)	32	U-Haul/Sedan
City Hall (Palm Desert)	27	U-Haul
City Hall (Palm Springs)	29	U-Haul/Sedan

#### Registrar of Voters Central Counting Location

The central counting site is located on Gateway Drive in Riverside. Upon arrival at the ROV, transport vehicles are greeted at the front entrance by ROV personnel who assist in unloading tubs containing red transport bags that hold the vote results cartridges. The tubs are brought through the front door, the transport bag seals are broken and the contents are inventoried at a front counter. The ballot cartridges are removed from the bags in the ROV work area in public view and taken directly into the ballot counting room. A Sheriff's Deputy was present in the lobby to ensure the process was not impeded.

The ROV ballot counting room is glass on three sides facilitating observation by the public. Results cartridges are inserted into cartridge reading stations attached to lap top computers that transmit the vote data to the (isolated) tally server. The tally server, located in the ballot counting room, is housed in a plexi-glass enclosure. To enhance observation by the public of the tally server and vote tallying activities, the ROV permitted the public to enter the work area immediately in front of the ballot counting room. Previously, the public had been restricted to viewing Election Night activities through windows in the Community Room.

The ballot counting room provides a secure environment that minimizes the risk of any disconnection from the tally server and a transparent partition that facilitates observation of ballot counting activities. A member of the County Information Security Office (CISO) was present in the ballot counting room on Election Night to monitor the department's processes and secure transmission from Indio.

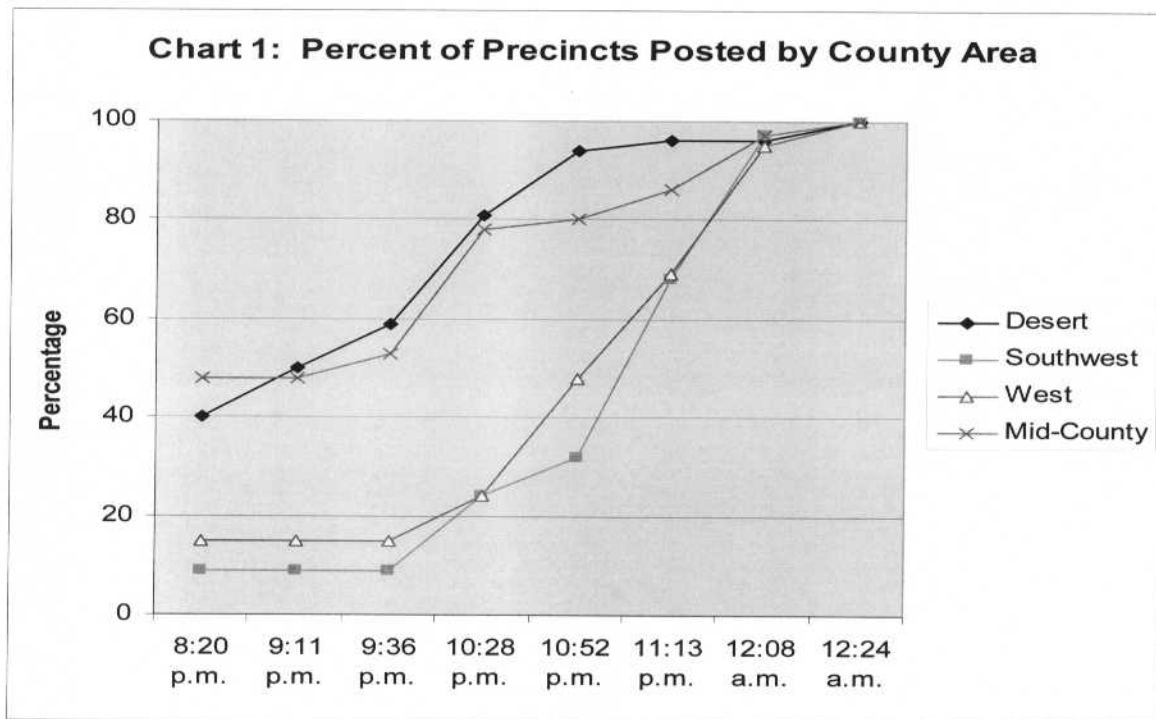
#### Indio Remote Transmission Site

June 6 was the first countywide election utilizing the Indio remote transmission site. The transmission site is located in the Assessor's lobby at the County Administrative Center (CAC) in Indio. A floor to ceiling glass partition allows observers to see the cartridge processing and provides a secure environment that minimizes disconnection of laptops from the transmission line. A Sheriff's Deputy was present in the lobby to ensure the process was not impeded and a member of the CISO was present in the transmission room to monitor the department's processes and secure transmission of vote data to the central counting site.

One hundred (100) polling places throughout the Coachella Valley transported results cartridges to either collection centers that in turn delivered the cartridges to the remote site at the Indio CAC or directly to the Indio CAC. A Sheriff's Deputy provided transportation of the results cartridges from Blythe to Indio. Vote data was encrypted and transmitted over the protected wide area network (CORNET) to the central tally server in Riverside. This process facilitated progressive updates to the ROV website for desert area contests (see Table 6).

Table 6: Percent of Precincts Posted by County Area on Election Night

Area (Contest)	8:20 p.m.	9:11 p.m.	9:36 p.m.	10:28 p.m.	10:52 p.m.	11:13 p.m.	12:08 a.m.	12:24 a.m.
Desert (4 <sup>th</sup> Spvsr)	40%	50%	58%	81%	94%	96%	96%	100%
Southwest (Measure E)	9%	9%	9%	24%	32%	68%	97%	100%
West (2 <sup>nd</sup> Spvsr)	15%	15%	15%	24%	48%	69%	95%	100%
Mid-County (5 <sup>th</sup> Spvsr)	48%	48%	53%	78%	80%	86%	97%	100%



Election Night Updates

Table 6 shows the ROV website was updated 8 times during vote tabulation on Election Night. The ROV's established procedure requires postings to the web only after updating the Secretary of State. However, due to the complicated nature of the Primary Election, generation of update reports for the Secretary of State approached 20 minutes each. In addition, results cartridges could not be processed during generation of the report delaying vote counting. In order to ensure timely updates to the county website and continue processing vote result

cartridges, the Secretary of State was provided only three update reports by Riverside County on Election Night.

The final update did not include the votes from 17 vote result cartridges that were not immediately present on Election Night (see Attachment J). On June 7, 2006, five of the cartridges were located in-house (2 in transport bags, 2 in ballot storage that were not read, and 1 in a ballot box). The remaining 12 were found still sealed in the voting units when returned to the ROV—4 of which had never had polls opened (see Attachment K).

#### POST ELECTION ACTIVITIES

The Official Canvass of the election begins no later than the Thursday following an election and is conducted to:

- ✓ verify the accuracy and validity of the votes counted;
- ✓ to resolve any discrepancies through review of official election material and unused ballots; and
- ✓ to complete the official vote count including write-in votes, absentee ballots, and provisional ballots not included in the semi-official canvass.

The Official Canvass is open to the public and must be completed within 28 days of the election.

#### Absentee Ballots

Approximately 15,000 absentee ballots remained to be opened and counted after Election Day. A public opening of the ballots was conducted on June 14 -15 and the ballots were counted on June 16 resulting in an update of county vote totals to the County website and the Secretary of State. Video taping and photography were not permitted during the opening process to preserve the confidentiality of voter information contained on envelopes.

#### Provisional Ballots

Approximately 4,600 provisional ballots were issued on Election Day. Provisional ballots are issued to voters whose names do not appear on the precinct roster. Provisional ballots are held in a pending status until the voter's registration is researched and validated. The correct precinct for the voter must also be obtained to ensure that only those contests the voter was entitled to vote on are counted. The research process was open to the public, but video taping and photography were not permitted to preserve the confidentiality of voter information.

#### One-percent Manual Tally

Elections Code §15360 requires a public manual tally of one-percent of the precincts in the election selected at random by the elections official. Additional precincts are added to cover contests not included in the random sample. The Registrar of Voters conducted a public random sample of precincts on June 8, 2006. Attachment L presents the six randomly selected precincts and the

additional six precincts added to cover all contests. Both the VeriVote tally and absentee ballot tally utilized the same precincts.

#### *VeriVote*

The one-percent manual tally using the paper record copies of voters' selections from the VeriVote commenced on Monday, June 12, and concluded on Tuesday, June 13. Five tables were set up with four person tally boards comprised of volunteers (precinct officers) and supplemented by ROV temporary staff. Stationary paint rollers were used to keep the VeriVote paper rolls orderly (see Picture Gallery 2) and facilitate recounting of the roll, if needed.

Observers were restricted to a gallery area close enough to the tally boards to observe the process. Video taping and photography were permitted, but tripods presented a safety risk and were not permitted.

#### *Absentee Ballots*

The one-percent manual tally of absentee ballots commenced on the afternoon of June 22 and concluded by the close of business on June 23. On June 22, the tally was conducted by one team of ROV staff members (two permanent staff and two temporary staff) and two additional teams were added on June 23 (see Picture Gallery 3).

Again, observers were restricted to a gallery area close enough to the tally boards to observe the process. Video taping and photography were permitted, but tripods were not. One observer ignored the multiple signs prohibiting tripods requiring facility security to intervene.

#### CERTIFICATION OF RESULTS

The election was certified by the Registrar of Voters on June 27, 2006. Summary election totals on the County's website were amended on July 5 after a routine comparison revealed a discrepancy between precinct-level vote totals, which were accurate, and summary election totals, which were inaccurate.

The summary totals did not correctly reflect provisional ballots cast by 278 provisional voters in district contests. These voters cast ballots outside their home precincts on ballots that included contests that were not part of the ballot in the voters' home precinct. A program ran after the discrepancy was identified credited the votes to the appropriate contests. Program modifications will correct the issue in future elections.

The Statement of Vote was submitted to the County Executive Office on June 28 for placement on the Board of Supervisors July 11 agenda.

#### RECOUNT

Mr. John Barker is an official write-in candidate for the 45<sup>th</sup> Congressional District. He has requested a recount of the votes cast for Republican candidates in that district. The recount is scheduled to begin Friday, July 7.



May 18, 2006

Mr. Bruce McPherson  
California Secretary of State  
1500 11<sup>th</sup> Street, 6<sup>th</sup> Floor  
Sacramento, CA 95814

RE: Request for Waiver of Posting Results of Votes Cast at Precincts  
for the June 6, 2006 Consolidated Primary Election

Dear Secretary McPherson:

The County of Riverside has used Sequoia Edge Direct Record Electronic (DRE) voting units to conduct elections since November 2000. In the thirty six (36) subsequent successful elections conducted with the DREs the County has been granted a waiver from posting results at the polls because the DREs lacked printers. Even with the addition of the VeriVote printer (Sequoia's Voter Verifiable Paper Audit Trail) the Registrar of Voters continues to encounter challenges in complying with the posting requirement; and respectfully requests a waiver from posting the results at precincts for the June 6, 2006 Election.

The most significant challenges we are facing in relation to posting results are the retention of schools and residences as polling places, maintaining the confidentiality of every ballot cast, and timely reporting of results. These challenges are explained in detail on the following page.

We are working on a solution to comply with the posting requirement, but it cannot be implemented prior to the complex Primary Election. I have recently invited the central committee chairs and community groups in Riverside County to meet with me after the Primary to discuss the requirement and to explore options that for compliance that will not compromise the confidentiality of the votes cast or result in the loss of polling places.

As the Registrar of Voters of Riverside County, and on behalf of the voters who entrust me to keep all votes cast confidential, I respectfully request a waiver from posting results of votes cast at precincts for the June 6, 2006 Consolidate Primary Election.

As always, if I can provide any further information, please contact me.

Sincerely,

Barbara Dunmore  
Registrar of Voters

cc: Bob Buster, Chairman  
Board of Supervisors

## **Challenges to Precinct Posting of Results In Riverside County for the June Primary**

### Retention of schools and residences as polling places

School administrators and homeowners have informed the Registrar that they will rescind their sites as polling places if election results are posted. Schools are concerned about their ability to safeguard their students when unknown individuals walk onto campuses to locate the results postings in the days after an election. Similarly, occupants of residences do not want strangers approaching their home late at night or in the days following an election looking for election results. Since there is no prohibition for removing election results or a specified time length for the posting, the posting may no longer exist.

The County has contracted with 138 schools as polling places (25% of 6/6/06 polling places) and 45 residences for the June Primary Election. In November 2005, the Riverside Unified School District rescinded the use of their schools as polling places because of voter/non-voter access to campuses and the extended presence of non-voters (e.g., poll watchers).

### Confidentiality of every ballot cast

The Edge II can print the votes cast for each contest and candidate to the VeriVote. However, the process can compromise the confidentiality of the ballot. For example, if a poll worker or poll watcher takes note of which voting unit a voter cast their ballot and at the end of the day that was the only ballot cast on the unit, the voter's selections would be revealed when printed. The same result is possible when multiple voters vote on a unit if they all vote the same in just one contest. This is of particular concern to well-known individuals such as candidates and communities leaders, but is equaling concerning to voters who may have a neighbor working the precinct in their neighborhood.

### Timely reporting of results

The Primary Election contains more candidates and options than other elections. A typical ballot in Riverside County contains 578 options across all ballot types. The VeriVote would be required to print the votes cast for each candidate and contest and poll workers would have to copy the results and subsequently aggregate the totals for posting. Poll workers in Riverside County are not permitted to access the paper audit trail in the sealed VeriVote. A VeriVote paper roll is 300 feet long and can record about 100 ballots. Depending where on the paper roll the result reporting begins, it will likely not be able to accommodate the entire results report. The range inspector who oversees the operations of 6-8 polling places on Election Day would have to be called to change the paper. It is unknown how long this process will add to the closing of polls affecting the timeliness of updates to the Secretary of State and voters in Riverside County via the Registrar's website.

ATTACHMENT B



BRUCE McPHERSON | SECRETARY OF STATE | STATE OF CALIFORNIA  
EXECUTIVE OFFICE | 1500 11th Street, Sacramento, CA, 95814 | tel 916.653.7244 fax 916.653.4620 www.ss.ca.gov

June 2, 2006

06 JUN -7 AM 10:07

REGISTRAR OF VOTERS  
COUNTY OF RIVERSIDE

Barbara Dunmore  
Registrar of Voters  
County of Riverside  
2724 Gateway Drive  
Riverside, CA 92507

Dear Ms. Dunmore:

We are in receipt of your request for a waiver from Elections Code Section 19384 that contains a requirement for posting a statement of results at the precinct.

The Secretary of State does not have the authority to waive state law. We do, however, feel this statute is antiquated, as it refers to the old lever voting technology that is no longer in use in California and requires elections officials to perform a duty that may be procedurally impossible for many modern voting systems.

We strongly encourage you to work with the CACEO's Legislative Subcommittee to craft a proposed legislative solution that would change the law to keep pace with today's voting systems and technology. The Secretary of State would be happy to work with you in this effort. Additionally, we encourage you to involve all interested parties in designing a mutually agreeable solution that still serves the intent of this provision of law.

Sincerely,

A handwritten signature in cursive script that reads "Susan Lapsley".

Susan Lapsley  
Assistant Secretary of State for Elections



BARBARA DUNMORE  
Registrar of Voters

2724 Gateway Drive  
Riverside, CA 92507-0918  
(951) 486-7200 · FAX (951) 486-7335  
[www.voteinfo.net](http://www.voteinfo.net)

REGISTRAR OF VOTERS  
COUNTY OF RIVERSIDE

## Election Observer Panel Plan

(Revised)

### I. County and System Information

- Sequoia Voting Systems Edge II with Verivote and DFM Mark-A-Vote

### II. Purpose

The purpose of an Election Observer Panel is to:

- Provide for orderly public observation of the election process.
- Ensure that the election process is conducted transparently.
- Encourage participation and build voter confidence in the election process.

### III. Invite

Between E-60 and E-30, send out letters of invitation to the following:

- County Grand Jury
- Political Party Central Committee Members
- Media

Other groups or individuals expressing an interest in observing Election Day activities may also, at the discretion of the Registrar of Voters, be included in the observer panel.

## Observations at Polling Places

### Letters of Introduction

Any group or individual desiring to be provided a letter of introduction for presentation to precinct board members at a polling site, may obtain one by providing the Registrar of Voters a signed written request no later than 10 days prior to Election Day. Any requests for polling place location information must be made at the same time

### General Rules for Observers

Observers are responsible for:

- Checking in at each site, whether polling place or central counting site.
- Wearing an identification badge.
- Maintaining a professional manner while observing the election processes.
- Ensuring they do not interfere with the elections process.

Observers MAY:

- Observe the proceedings at the polls, including the opening and closing procedures.
- Obtain information from the precinct index that is posted near the entrance.
- Make notes and watch all procedures.
- View all activities at the central counting and remote transmission site(s) on Election Day.
- View the canvass of the vote activities following the election.

- View absentee and provisional ballot processing.
- Ask questions of staff or voters at the polls.
- Ask questions of supervisors at the central counting and remote transmission site(s).

Observers May Not:

- Interfere in any way with the conduct of the election.
- Touch any voting materials or equipment, sit at the official worktables, or observe from within the "voting area."
- Converse with voters (within 100 feet of the entrance to a polling place), or speak to a voter regarding his or her qualifications to vote.
- Display any election material or wear campaign badges, buttons or apparel.
- Wear the uniform of a peace officer, a private guard, or security personnel.
- Use cellular phones, pagers, two-way radios, cameras, audio or video recording devices, or camera phones inside the polling place.
- Talk to central counting site workers while they are processing ballots.
- Use telephones, computers or other polling place facilities at polling places or the central counting site.
- Touch election personnel.
- Eat or drink in the polls or the central counting site.
- Assist in operations at any polling place.

## Observations at Central Counting Location

### Check In Procedures

1. All observers must report and sign in daily at the Registrar of Voters front counter located at 2724 Gateway Drive, Riverside, CA, 92507.
2. An Election Observer Badge will be issued and must be worn at all times.
3. When leaving for the day, please return the badge to the front counter.

### General Rules

1. Observers will be permitted access to a designated observation area, sufficiently close to enable them to observe and challenge whether individuals handling absentee ballots are following established procedures (Elections Code §5104d)
2. No observer shall interfere with the orderly processing of absentee ballot return envelopes or processing and counting of absentee ballots, including touching or handling of the ballots or envelopes. (Elections Code §15104e)
3. ~~Cellular phones, pagers, two-way radios, cameras, audio or video recording devices, or camera phones are not allowed.~~ Pagers and cellular phones must be set to vibrate or off mode while observing the canvass.
4. The individual's function is to observe that procedures are followed. Observers cannot assist in operations, touch or handle any ballots or other election-related materials.
5. All questions concerning a procedure should be directed to the supervisor or manager of the section only.
6. The number of observers may be limited so as not to interfere with the process. Observers should avoid physical contact with employees.
7. Observers are to hold discussions and conversations outside the designated canvass work areas. Anyone not adhering to these rules will be asked to leave for the day.
8. Observers will be allowed to observe the canvass work areas only when employees are performing canvass operations.
9. Operations will continue as scheduled whether or not an observer is present.

## IV. Mechanism for Feedback

Observers will be given a written overview of processes used in conducting the election and an approximate timeline. Written Guidelines for Observer conduct and instructions on how to ask questions or seek clarification will be included.

## ELECTION OBSERVER PANEL MEMBERSHIP AND OBSERVATION OF ELECTION PROCESSES

EOP Membership	PRE-ELECTION					E	POST ELECTION							Edge II Memory Results		
	EOP 6/1/06 Mtg.	DRE L & A	Paper L & A	Absen. Proc	Absen. Open		Absen. Count	Random Precinct Selection	1% Tally Ver/Vote	1% Tally Paper	Absen. Open	Absen. Count	Paper Ballot Open		Paper DRE Entry	Provis. Verif.
Shirley Walton, Dem. Chairperson																
Doug Dye	X	X	X	X	X			X								
Dave Lander																
Dick Morris																X
Green Chairperson	X	X														
Barrington Daltry																
Penny Newman																
Gene Berkman, Libertarian, Chairman																
Jane Henson																
Susan Marie Weber																
Kevin Akin, Chairman																
Peace & Freedom, L. Maxine Ewig	X															
Jerry Ewig, DFA-TV, Coordinator	X															
Art Cassel	X	X														
Tom Courbat	X	X														

\*Political parties not represented above did not respond with interest to serve or name appointees.

## Updating Election Results Posting

*To enhance transparency of elections and provide all interested parties access to election precinct results, the Registrar of Voters (ROV) is undertaking a pilot project to post Precinct Auditable Voting Unit Results (P.A.V.U.R.) on the ROV website ([www.voteinfo.net](http://www.voteinfo.net)) Election Night. With 587 polling places across 7,200 square miles, technology provides the opportunity to replace outmoded and unreliable polling place postings with a central repository of votes cast by precinct. In the spirit of existing posting requirements, the P.A.V.U.R. will be available Election Night and contain votes cast for each candidate and measure by precinct on each voting unit.*

### Project Description:

The P.A.V.U.R. Posting will be placed on the Registrar of Voter's website on Election Night after the vote data from all results cartridges is tallied. The Posting contains the statement of return of votes cast per precinct on each voting unit. This central repository of precinct voting data enhances transparency, facilitates auditing of precinct level vote data, and provides information on voting system performance. Voters and election observers will be able to:

- ✓ view precinct level results without being present at the close of polls;
- ✓ view the number of votes cast for each candidate and measure on each voting unit;
- ✓ assess voting unit performance; and
- ✓ compare precinct level totals to official results.

The P.A.V.U.R. Posting will:

- ✓ remain on the Registrar of Voters' website for, at a minimum, the legal retention period;
- ✓ become part of the official canvass documents;
- ✓ preserve the confidentiality of individual ballots cast; and
- ✓ relieve schools' and residences' safety concerns of posting at polling places.

Upon request of a County Central Committee, a copy of the P.A.V.U.R. in electronic format will be provided at no charge. The Election Observer Panel is comprised of appointees from central committees and community groups. Recognizing their vital role observing the elections process, the Panel will be provided an opportunity to audit the results of the P.A.V.U.R. posting by presenting a list of voting units to the Registrar to print the results from the internal memory of each unit in their presence prior to the certification of the election results.

**Procedure:**

Pre-Election: The Registrar of Voters will post on its website the touch screen voting unit numbers assigned to each voting precinct/polling place in the election (see attached example).

Election Day: After the closing of polls, the results cartridge from each touch screen voting unit assigned to a polling place in the election will be transported to the central counting site or remote transmission site. The vote data from the cartridges will be read into the central tally server. After the last cartridge of the evening is read, a report of votes cast per precinct by voting unit will be produced and posted on the Registrar's web site. The Precinct Auditable Voting Unit Results (P.A.V.U.R.) will remain posted on the web site along with other election related data.

Pre-Certification Audit:

The Registrar and Elections Observer Panel will agree upon a date not less than 14 days after the date of the Election, but prior to certification of the official election results, to conduct an audit of the P.A.V.U.R. On the day of the audit, the Panel will present the Registrar with a list of voting units to print the results directly from the internal memory/hard drive to a thermal printer in the EOP's presence. Two (2) copies of the printout will be produced—one for the EOP and one retained by the ROV. The audit will span not less than six (6) hours on the agreed upon date, unless terminated earlier by the EOP. Procedures for the process are attached.

**Current Conditions and Legal Requirements**

Riverside County comprises over 7,200 square miles stretching nearly 200 miles across from within 14 miles of the Pacific Ocean to the Colorado River. Home to over 2 million residents and 740,000 registered voters, 587 polling places will be set up throughout the County to conduct the June 6 Primary Election.

Riverside County was the pioneer of Direct Record Electronic (DRE) touch screen voting in California in the November 2000 Presidential General Election. Since then, 36 successful elections have been conducted using touch screen voting technology. Numerous recounts and participation in two State-conducted parallel monitoring programs has proven the voting system's accuracy to record, tabulate, and report votes. Confident in the accuracy of the system and recognizing the printing limitations of DREs, counties using electronic voting technology were exempted from posting precinct results outside the polling place when those units did not include printers (see Election Code Requirements below).

Precinct posting of results is a procedure leftover from the days when paper ballots were counted at the polling place. Prior to DREs and with the advent of remote and central counting sites to increase accuracy and expedite the tally of results on Election Night, posting of results at central counting sites and websites replaced precinct posting. Precinct level totals are currently available upon certification of the election in the official Statement of Vote produced by the Election Official.

Senate Bill 1438

Senate Bill 1438 (Chapter 814, Statutes of 2004) requires all DRE voting systems used to conduct elections after January 1, 2006 to be equipped with a voter verified paper audit trail (VVPAT). Riverside County's Edge II DRE voting units are equipped with VeriVote—a printer appended to the side of each unit that allows the voter to verify a paper record copy of their selections presented under a plexiglass panel before casting their ballot.

The VeriVote is a printing device and the Edge voting unit can be set to print the results automatically to the printer. However, privacy concerns and uncertainty of whether enough unused paper remains to record the results are among the challenges to printing results to the VeriVote.

Elections Code Requirements

EC 19370 contains the procedure for closing the polls. If a voting unit is equipped with a recording device the precinct board is to operate the mechanism and produce a minimum of three (3) copies of the statement of return votes cast—one of which is to be posted upon the outside wall of the precinct. EC 19384 requires the result of votes cast be posted conspicuously on the outside of the polling place.

COUNTY OF RIVERSIDE  
REGISTRAR OF VOTERS

DEPARTMENTAL PROCEDURES

**Section: Operations**

**Effective Date: 6/19/06**

**Subject: EOP audit of voting unit results  
(also referred to as "warehouse audit")**

**Review Date:**

**PURPOSE:** To provide the EOP with summary results reports from the voting unit memory of selected voting units.

**POLICY:** This procedure is applicable to the June 6, 2006 Consolidated Primary Election only.

**MATERIALS NEEDED:** Voting units, VeriVotes loaded with blank paper rolls, Forklift, machine specific results cartridges

- PROCEDURE:**
- 1) The EOP and Registrar of Voters will agree upon a day for this procedure
  - 2) On the agreed upon day of this procedure, the EOP will provide the Registrar with a list of voting unit numbers to be audited before the procedure begins—voting units cannot be added once the list is presented to the ROV
  - 3) The Edge cart number and location of the Edge cart containing the voting unit(s) will be identified.
  - 4) The Edge cart will be retrieved and the selected voting unit(s) placed on a table.
  - 5) The first VeriVote (VeriVote #1) will be placed on the voting unit.
  - 6) The voting unit will be examined to determine if unit is in the "Polls Closed" or "Polls Open" mode.
  - 7) **POLLS CLOSED:**
    - a) Power voting unit 'on.'
    - b) Select "Print Results" from screen
    - c) After printing finishes, replace VeriVote #1 with a second VeriVote (VeriVote #2). This step provides an additional copy of the recorded votes to be retained by the ROV.
    - d) Select "Print Results" from screen
    - e) Power voting unit 'off.'
  - 8) **POLLS OPEN:**
    - a) Locate and insert machine specific results cartridge into voting unit
    - b) Power voting unit 'on.'
    - c) Turn knob to "Polls Closed."
    - \*\*Items d, e, & f optional. EOP to advise ROV prior to beginning procedure*
    - d) Power voting unit 'off.'
    - e) Remove results cartridge
    - f) Power voting unit 'on.'
    - Item g will follow either Item c or Item f, depending on EOP preference*
    - g) Select "Print Results" from screen.
    - h) After printing finishes, replace VeriVote #1 with VeriVote #2
    - i) Select "Print Results" from screen
    - j) Power voting unit 'off.'
  - 9) The voting unit(s) will be returned to the Edge cart and returned to the shelf. This procedure will cease upon completion of the list of voting units provided by the EOP in 1 above or 6 hours of performing the procedure, whichever comes first. The process will not continue in the absence of observers, but time will continue to be counted toward completion of the process (excluding breaks).
  - 10) VeriVote rolls will be removed from printers and EOP will select roll(s) from either VeriVote #1 or VeriVote #2 to take with them for auditing purposes.

**ATTACHMENTS:** General Rules for Observers – Warehouse Audit

## GENERAL RULES FOR OBSERVERS – WAREHOUSE AUDIT

### Check In Procedures

- Observers should arrive promptly on the designated date and time
- All observers must sign in at the front counter
- An ROV Visitor's Badge will be issued and must be worn at all times
- Observers should check out and return the Visitor's Badge during the lunch break and leaving for the day
- Observers will be escorted by ROV staff to the warehouse

### General Rules

- Observers will only be permitted in the designated observation area of the warehouse and only when warehouse audit procedures are being conducted
- Observers cannot assist in the operations, touch or handle any voting units or other election-related materials
- Observers should avoid physical contact with employees
- **NO VIDEO TAPING OR PHOTOGRAPHY WILL BE PERMITTED IN THE WAREHOUSE**
- No food or drinks will be permitted in warehouse

### Schedule – June 26, 2006

9:00 a.m.	Observers are escorted to designated observation area of the warehouse
9:05 a.m.	EOP presents ROV with list of voting units to print results from voting unit memory (voting units cannot be added after presentation of the list)
9:10 a.m.	Process of retrieving Edge voting units and printing vote results from voting unit memory begins
10:00 – 10:15 a.m.	BREAK
10:15 – 12:00 p.m.	Process of retrieving Edge voting units and printing vote results from voting unit memory continues
12:00 – 1:00 p.m.	LUNCH BREAK
1:00 – 3:00 p.m.	Process of retrieving Edge voting units and printing vote results from voting memory continues
3:00 – 3:15 p.m.	BREAK
3:15 – 4:15 p.m.	Process of retrieving Edge voting units and printing vote results from voting unit memory continues
4:15 – 4:30 p.m.	Audit process concludes. EOP selects VeriVote roll(s) from either VeriVote #1 or VeriVote #2 to take with them for audit purposes



---

Date: May 22, 2006  
To: Interested Parties  
From: Barbara Dunmore, Registrar of Voters

---

**RE: Processing of Absentee Ballots**

---

Processing of absentee ballots for the June 6 Primary Election will proceed on:

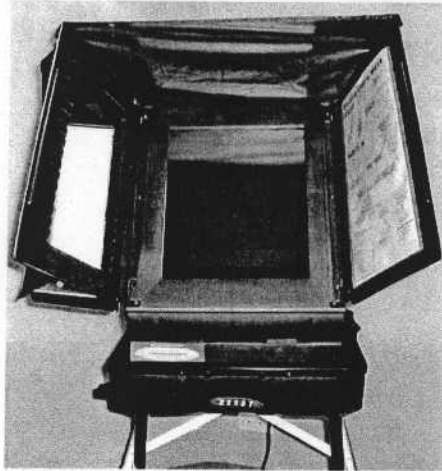
Date: Wednesday, May 24, 2006  
Time: 8:00 a.m.  
Location: Community Room  
Registrar of Voters Office  
2724 Gateway Drive, Riverside CA 92507

Processing includes sorting return absentee ballot envelopes, data entry, signature verification, opening absentee ballots, and tabulation. Most activities occur concurrently and the public is invited to observe any or all of the processes.

The processing will continue everyday for at least 6 hours, excluding Sundays, whether or not observers are present. In the essence of time, processing may be performed on Saturdays and holidays. Observers are encouraged to contact the Registrar of Voters at (951) 486-7330 immediately preceding such days to find out if processing will occur.



# EARLY VOTING



*You may cast your absentee ballot early by Touch Screen*

May 20-May 28

10:00 a.m. to 7:00 p.m. Monday through Saturday

11:00 a.m. to 6:00 p.m. Sunday

At the following locations

Galleria at Tyler

1299 Galleria at Tyler, Riverside, Ca

The Promenade in Temecula

40820 Winchester Road, Temecula, Ca

**NEW LOCATION**

University of California, Riverside-Palm Desert

75-080 Frank Sinatra Drive, Palm Desert, Ca

**You can also vote early**

May 8- June 5

at The Registrar of Voters Office in Riverside

8:00a.m. to 5:00 p.m. Weekdays (excluding weekends and holidays)

And 7:00a.m. to 8:00p.m. on Election Day June 6, 2006



## EARLY VOTING SCHEDULE JUNE 6, 2006 ELECTION

Date	Time	Location	Address
Tuesday May 9, 2006	1PM-6PM	Mizell Senior Center	480 S Sunrise Way Palm Springs, CA 92262
Saturday May 13, 2006	9AM-2PM	Mission Trail Library	34303 Mission Trl Wildomar, CA 92595
Monday May 15, 2006	9AM-2PM	Simpson Center	305 E Devonshire Ave Hemet, CA 92543
Thursday May 18, 2006	10AM-2PM	UCR-Rivera Library	900 University Ave Riverside, CA 92507
Friday May 26, 2006	9AM-2PM	Corona-Norco USDO	2820 Clark Ave Norco, CA 92860
Tuesday May 30, 2006	10AM-2PM	James A Venable Community Center	50390 Carmen Ave Cabazon, CA 92230
Wednesday May 31, 2006	9AM-2PM	Workforce Development Center	1025 N State St Hemet, CA 92543
Friday June 2, 2006	11AM-2PM	County Administrative Center	260 N. Broadway Blythe, CA 92225



**R**EGISTRATION



**O**UTREACH



**V**OTING



**E**DUCTION



**R**ESOURCE



**BRUCE MCPHERSON** | SECRETARY OF STATE | STATE OF CALIFORNIA  
ELECTIONS | 1500 11th Street, 5th floor, Sacramento, CA 95814 | tel 916.657.2166 | fax 916.653.3214 | www.ss.ca.gov

April 7, 2006

To: County Clerks/Registrars of Voters (06153)

A handwritten signature in black ink that reads "Caren Daniels-Meade".

From: \_\_\_\_\_  
Caren Daniels-Meade, Chief of Elections

**Subject: Provisional Ballots and Back-Up Paper Ballots in DRE Counties**

You have sought direction from this office concerning paper ballots and provisional voting in counties using DRE voting systems in the June primary. Just as we directed in 2005, any county using a direct record electronic (DRE) voting system that is certified for use in California with an electronic provisional ballot module may use this module for casting of provisional ballots in accordance with the adopted procedures for the voting system or, alternatively, may use paper provisional ballots. However, all county election officials shall have an adequate supply of paper ballots, as determined by the election official, available at the voting locations for use in the event of a temporary loss of the ability to use electronic equipment, or if a voter chooses not to vote on electronic equipment.

This back-up supply can be absentee ballots or other option as determined to be reasonable by the election official. If absentee ballots are used at the polls, the voter need NOT apply for an absentee ballot in order to be able to use it to vote at the polls. You may also use paper provisional ballots to satisfy voters wishing to vote on paper in the event that DRE counties do not have a sufficient supply of absentee ballots to satisfy the needs of the precinct voters. If your supply of back-up paper ballots becomes exhausted, the election official, pursuant to Elections Code Section 14299, shall deliver the necessary additional supplies to the polling place. Since voters can vote absentee ballots at the polls (as we noted above), by extension it is possible that officials might provide a supply of "reasonable facsimiles" of sample ballots to polling places since such facsimiles are allowed to function as absentee ballots, pursuant to Elections Code Sections 13316 and 13317, until additional supplies can be delivered to the polling place.

Thanks for your cooperation. Please feel free to contact me if you have questions or concerns at [cdaniels@ss.ca.gov](mailto:cdaniels@ss.ca.gov) or (916) 657-2133.

Consolidated Direct Primary Election

June 6, 2006

ATTACHMENT J

Machine Processed Report

Riverside County

Precinct Name	Polling Place	Processed
14027		0 / 1 0.00%
43209	<input type="checkbox"/>	
21108		0 / 1 0.00%
42585	<input type="checkbox"/>	
21113		0 / 1 0.00%
42588	<input type="checkbox"/>	
22062		0 / 1 0.00%
42993	<input type="checkbox"/>	
33010		0 / 1 0.00%
43487	<input type="checkbox"/>	
36005		0 / 1 0.00%
44333	<input type="checkbox"/>	
37044		0 / 1 0.00%
44430	<input type="checkbox"/>	
37727		0 / 1 0.00%
43686	<input type="checkbox"/>	
42011		0 / 1 0.00%
41928	<input type="checkbox"/>	
42810		0 / 1 0.00%
42011	<input type="checkbox"/>	
44014		0 / 1 0.00%
42067	<input type="checkbox"/>	
45040		0 / 1 0.00%
42170	<input type="checkbox"/>	
47004		0 / 1 0.00%
41805	<input type="checkbox"/>	
48903		0 / 1 0.00%
42235	<input type="checkbox"/>	
51025		0 / 1 0.00%
44190	<input type="checkbox"/>	
51026		0 / 1 0.00%
44195	<input type="checkbox"/>	
58005		0 / 1 0.00%
42300	<input type="checkbox"/>	
<b>Total Polling Place Machines Processed:</b>		<b>0 / 17 0.00%</b>
<b>Total Machines Processed:</b>		<b>0 / 17 0.00%</b>

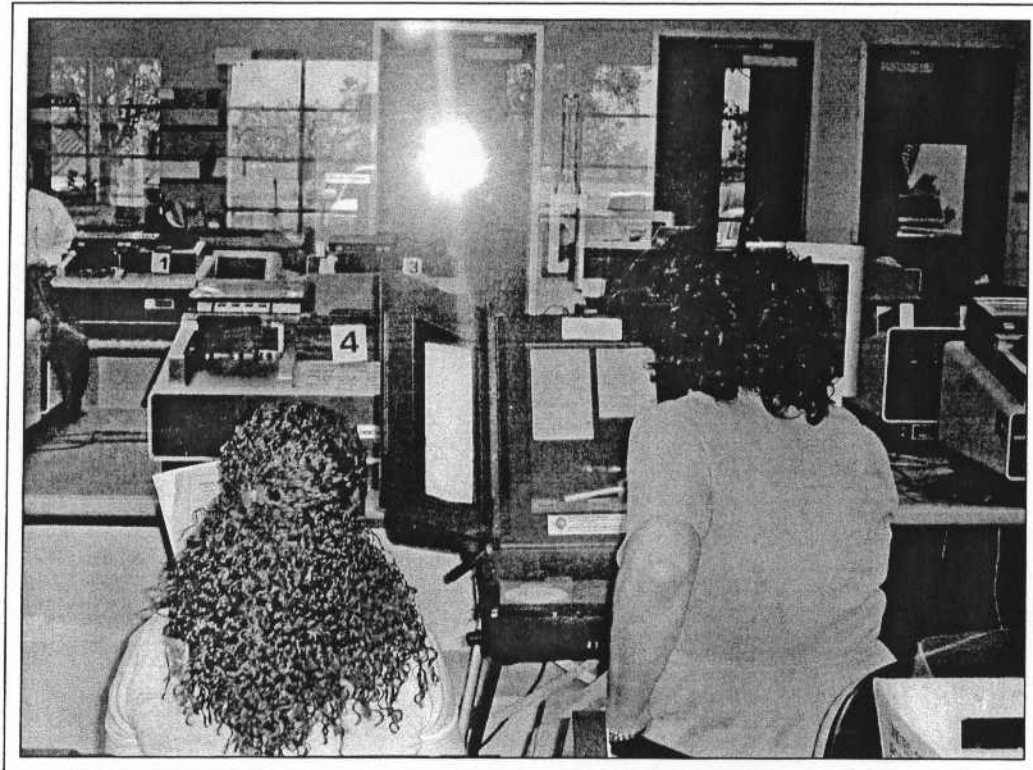
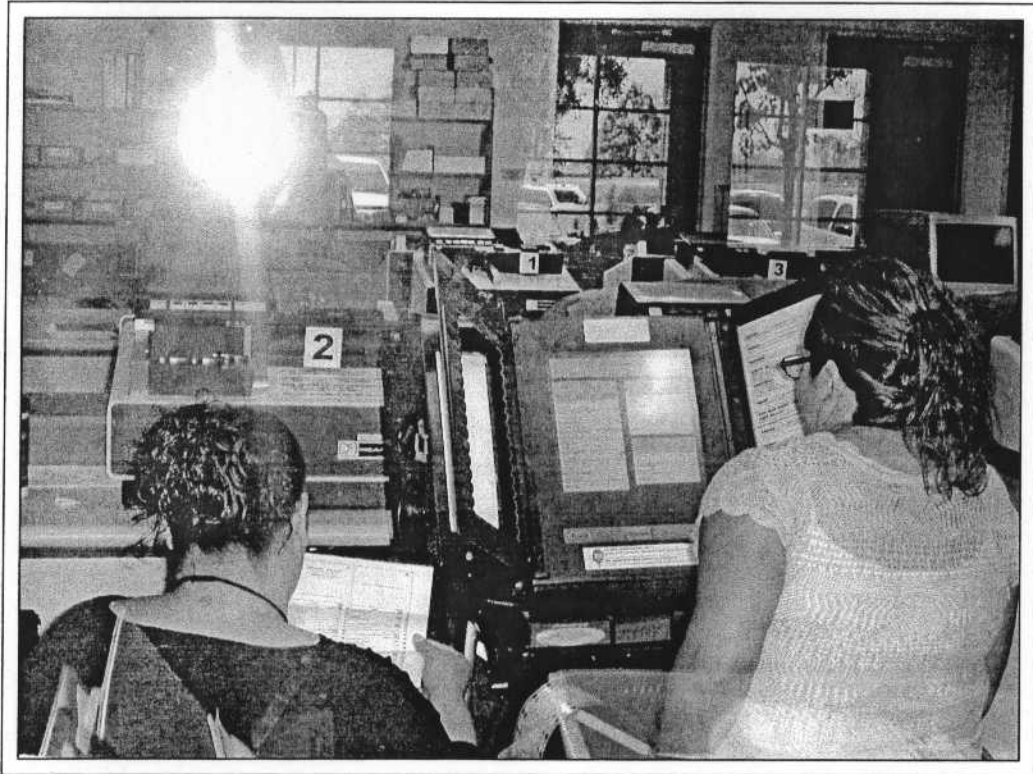
CARTRIDGES PROCESSED POST-ELECTION NIGHT

VP	Area Name	Serial 1	Cart #	Found In-house	# of Ballots	Comments	Polling Place	Address	City	State
14-027	LAKE ELSINORE	43209	XD22	Found In-house	17 Ballots	Read Next Day	James Residence	32425 Racquet Club Way	Lake Elsinore	CA
21-108	RIVERSIDE/WD 1	42585	WH05	Found in machine	56 Ballots		American Legion	2979 Dexter Dr	Riverside	CA
21-113	RIVERSIDE/WD 1	42588	WH06	Found in machine	36 Ballots		Riverside County Office of Education	3958 Twelfth St	Riverside	CA
22-062	CORONA	42983	XC03	Found in machine	25 ballots		West Community Friends Church	1220 W Ontario Ave	Corona	CA
33-010	CANYON LAKE	43487	XG06	Found In-house	26 Ballots	Read Next Day	Riverside County Fire Station # 60	28730 Vacation Dr	Canyon Lake	CA
36-005	SAN JACINTO	44333	YE15	Found in machine	39 Ballots		Sunrise Unit 1 Clubhouse	540 W Community College Dr	San Jacinto	CA
37-044	HEMET	44430	YF10	Found in machine	27 Ballots		Golden Coach Manor	575 S Lyon Ave	Hemet	CA
37-727	VALLE VISTA	43688	XH22	Found in machine	0 Ballots	Polis Not Open	Valle Vista Branch Library	25767 Fairview Ave	Hemet	CA
42-011	PALM DESERT	41928	WB18	Found In-house	54 Ballots	Read Next Day	Palm Desert Greens	73750 Country Club Dr	Palm Desert	CA
42-810	THOUSAND PALMS	42011	WC11	Found In-house	68 Ballots	Read Next Day	Tri-Palm Estates	32700 Desert Moon Dr	Thousand Palms	CA
44-014	LA QUINTA	42067	WC22	Found in machine	37 Ballots		La Quinta Senior Center	78450 Avenida La Fonda	La Quinta	CA
45-040	INDIO	42170	WD18	Found In-house	24 Ballots	Read Next Day	Suzuki Showroom	83407 Highway 111	Indio	CA
47-004	BLYTHE	41805	WA15	Found in machine	0 Ballots	Polis Not Open	Stream in the Desert Foursquare Church	361 N Lovelock Blvd	Blythe	CA
48-903	SKY VALLEY	42235	WE07	Found in machine	0 Ballots		Sky Valley Chamber & Community Center	20905 Hot Springs Rd	Desert Hot Springs	CA
51-025	BANNING	44190	YD10	Found in machine	0 Ballots	Polis Not Open	Grace Lutheran Church	1000 W Wilson St	Banning	CA
51-026	BANNING	44195	YD11	Found in machine	0 Ballots	Polis Not Open	Banning City Hall	99 E Ramsey St	Banning	CA
58-005	DESERT HOT SPGS	42300	WE20	Found in machine	36 Ballots		Desert Hot Springs Senior Center	11777 West Dr	Desert Hot Springs	CA

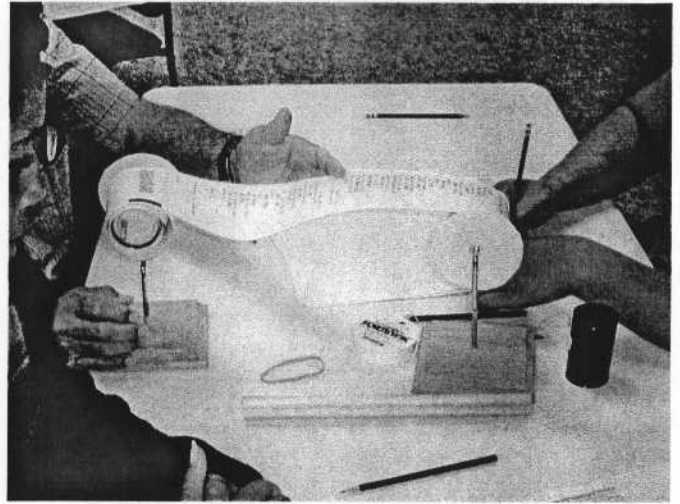
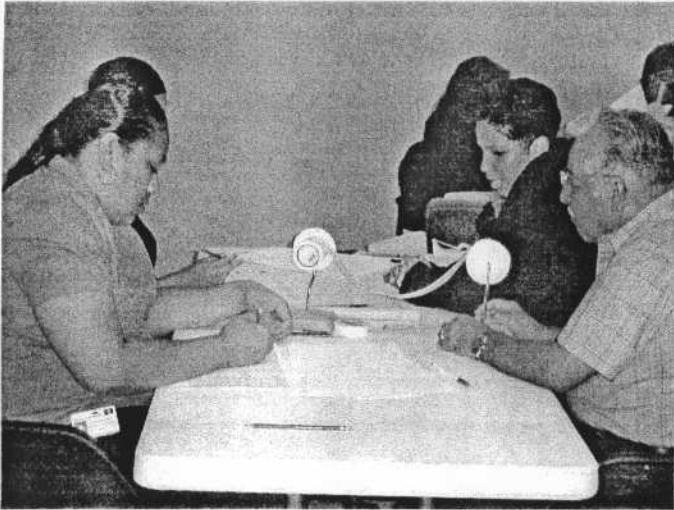
RANDOM AND SELECTED PRECINCTS  
FOR 1% MANUAL TALLY

Type	BT	Precinct	Rotation	Party
Random		All Random	Governor	All Partisan
Random		All Random	Lieutenant Governor	All Partisan
Random		All Random	Secretary of State	All Partisan
Random		All Random	Controller DEM	All Partisan
Random		All Random	Controller	All Partisan
Random		All Random	Treasurer	All Partisan
Random		All Random	Attorney General	All Partisan
Random		All Random	Insurance Commissioner	All Partisan
Random		All Random	Mbr, State Board of Equalization, 3rd	All Partisan
Random		All Random	United States Senator	All Partisan
Random		14-009	Co Central Comm 66th District REP	All Partisan
Random		All Random	State Supt of Public Instruction	Republican
Random		All Random	County Supt of Schools	Non-Partisan
Random		All Random	Assessor, County Clerk and Recorder	Non-Partisan
Random		All Random	Auditor	Non-Partisan
Random		All Random	District Attorney	Non-Partisan
Random		All Random	Sheriff, Coroner And Public Administrator	Non-Partisan
Random		All Random	Treasurer And Tax Collector	Non-Partisan
Random		All Random	81-Reading/Literacy Improvement Public Library Bond Act	Non-Partisan
Random		All Random	82-Preschool Education Tax on Incomes	Non-Partisan
Random	47	50-016	US Representative 41st District	Non-Partisan
Random	15	22-028	US Representative 44th District	All Partisan
Random	42	40-011 / 46-757	US Representative 45th District	All Partisan
Random	8	14-009	US Representative 49th District	All Partisan
Random	8	14-009	Measure G-Mt. San Jacinto Comm. College Dist.	All Partisan
Random	42	40-011 / 46-757	State Senator 40th District	Non-Partisan
Random	47	50-016	State Assembly 65th District	All Partisan
Random	8	14-009	State Assembly 66th District	All Partisan
Random	15	22-028	State Assembly 71st District	All Partisan
Random	42	40-011 / 46-757	State Assembly 80th District	All Partisan
Random	15	22-028	County Supervisor 2nd Supervisorial	All Partisan
Random	42	40-011 / 46-757	County Supervisor 4th Supervisorial	Non-Partisan
Random	47	50-016	County Supervisor 5th Supervisorial	Non-Partisan
Random	47	50-016	Measure B- Banning-Beaumont USD Transfer of Territory	Non-Partisan
Additional	48	51-014	Measure H-Banning USD	Non-Partisan
Additional	38	37-880	Measure C- Hemet USD	Non-Partisan
Additional	11	30-109	Measure E - Murrieta Valley USD	Non-Partisan
Additional	11	30-109	State Senator 36th District	Non-Partisan
Additional	60	56-930	Measure D - Nuvview Union SD	All Partisan
Additional	67	56-923	Mbr Gov Bd - Vacancy Romoland School District	Non-Partisan
Additional	58	52-204	State Assembly 63rd District	Non-Partisan
Additional	38	37-880	State Assembly 64th District	All Partisan
Additional	11	30-109	Co Central Comm 66th District REP	All Partisan
Additional	11	30-109		Republican

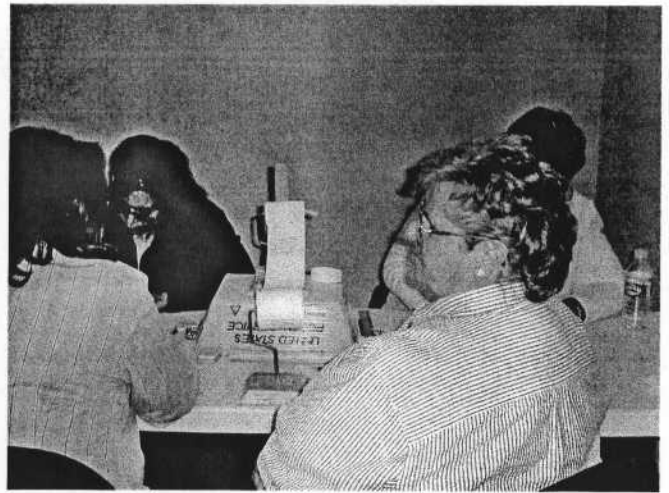
Duplication of Paper Ballots  
From Public Observation Area  
6/16/06



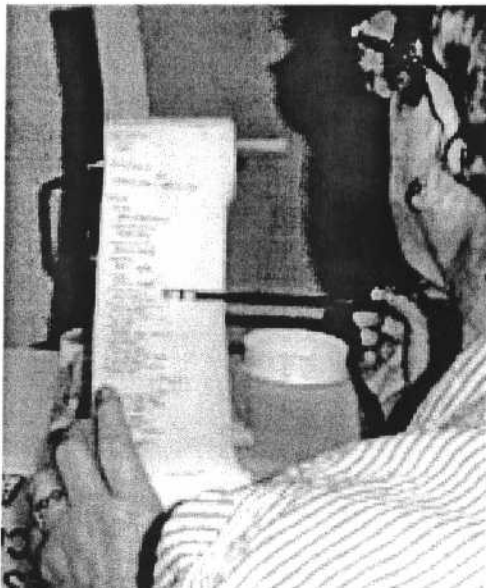
# 1% Manual Tally using VeriVote Tapes 6/12/06 & 6/13/06



Tally Boards using VeriVote (paint) rollers



Pictures from Observer Gallery



Picture taken by observer



OBSERVERS



**1% Manual Tally  
Of Absentee Ballots  
6/22/06 & 6/23/06**

