

**SUBMITTAL TO THE BOARD OF SUPERVISORS  
COUNTY OF RIVERSIDE, STATE OF CALIFORNIA**

564A



**FROM:** TLMA-Transportation Department

**SUBMITTAL DATE:**  
June 30, 2006

**SUBJECT:** Landscaping and Lighting Maintenance District No. 89-1-Consolidated, Annexation of Location 3 to Zone 41.

**RECOMMENDED MOTION:** That the Board:

1. Adopt Resolution No. 2006-233, Resolution of the County of Riverside confirming the diagram and assessment for Location 3 of Zone 41 of Landscaping and Lighting Maintenance District No. 89-1-Consolidated and levying assessments on all assessable lots and parcels of land therein for fiscal year 2006-07.

FORM APPROVED  
COUNTY COUNSEL

JUN 22 2006

BY *[Signature]*

*[Signature]*  
George A. Johnson  
Director of Transportation

|                       |                               |      |                         |         |
|-----------------------|-------------------------------|------|-------------------------|---------|
| <b>FINANCIAL DATA</b> | Current F.Y. Total Cost:      | \$ 0 | In Current Year Budget: | N/A     |
|                       | Current F.Y. Net County Cost: | \$ 0 | Budget Adjustment:      | No      |
|                       | Annual Net County Cost:       | \$ 0 | For Fiscal Year:        | 2006-07 |

|   |                                  |                          |
|---|----------------------------------|--------------------------|
| <b>SOURCE OF FUNDS:</b> Landscaping and Lighting Maintenance District No. 89-1-Consolidated | Positions To Be Deleted Per A-30 | <input type="checkbox"/> |
|   | Requires 4/5 Vote                | <input type="checkbox"/> |

**C.E.O. RECOMMENDATION:**

**APPROVE**

**County Executive Office Signature**

*[Signature]*

Consent  
 Policy  
 Consent  
 Policy  
 Dep't Recomm.:  
 Per Exec. Ofc.:

Prev. Agn. Ref.:

District: 2

Agenda Number:

3.74

**SUBJECT:** Landscaping and Lighting Maintenance District No. 89-1-Consolidated, Annexation of Location 3 to Zone 41.

June 30, 2006

Page 2 of 2

**BACKGROUND:**

On June 6, 2006, a public hearing was held to receive all testimony regarding the annexation of Location 3 to Zone 41 of Landscaping and Lighting Maintenance District No. 89-1-Consolidated ("L&LM Dist. No. 89-1-C"). After closing the public hearing, the Board directed the Director of Transportation, or his/her designee, to tally the assessment ballots that had been received prior to the close of the hearing. The assessment ballots were to be tabulated on June 7, 2006 at 10:00 a.m. in Conference Room B on the 8<sup>th</sup> Floor of the County Administrative Center. The tabulation shows that votes representing 1285 parcels out of a possible 1298 parcels were cast, and that 1280 votes ( or 99%) were cast in favor of the annexation of Location 3 to Zone 41 of L&LM Dist. No. 89-1-C and the levy and enrollment of the special assessment.

The proposed budget for fiscal year 2006-07 for Location 3 of Zone 41 is \$59,318.00 that will result in an assessment for fiscal year 2006-07 within Location 3 of Zone 41 of \$45.70 per parcel. The annual assessment will be adjusted annually by the greater of 2% or the cumulative percentage increase in the CPI-U, if any, as it stands of March of each year over the base index for March of 2006.

Adoption of Resolution No. 2006-233 confirms the assessment levy as indicated in the Engineer's Report for fiscal year 2006-07 for Location 3 of Zone 41 of L&LM Dist. No. 89-1-C and orders the placement of the annual assessment on the County's Assessment Roll for fiscal year 2006-07.

RESOLUTION NO. 2006-233

**RESOLUTION OF THE BOARD OF SUPERVISORS ORDERING THE ANNEXATION OF LOCATION 3 TO ZONE 41 OF LANDSCAPING AND LIGHTING MAINTENANCE DISTRICT NO. 89-1-CONSOLIDATED OF THE COUNTY OF RIVERSIDE AND CONFIRMING THE DIAGRAM AND ASSESSMENT FOR LOCATION 3 OF ZONE 41 OF LANDSCAPING AND LIGHTING MAINTENANCE DISTRICT NO. 89-1-CONSOLIDATED AND LEVYING ASSESSMENTS ON ALL ASSESSABLE LOTS AND PARCELS OF LAND THEREIN FOR THE FISCAL YEAR 2006-07**

**WHEREAS**, on April 11, 2006, the Board of Supervisors (hereinafter the "Board of Supervisors") of the County of Riverside (hereinafter the "County"), adopted Resolution No. 2006-086, pursuant to Section 22608 and Section 22585 et. seq. of the Streets and Highways Code, declaring the intention of the Board of Supervisors to order the annexation of Location 3 to Zone 41 of Landscaping and Lighting Maintenance District No. 89-1-Consolidated (hereinafter "L&LMD No. 89-1-C") of the County pursuant to Landscaping and Lighting Act of 1972, being Part 2 (commencing with Section 22500) of Division 15 of the Streets and Highways Code, and giving notice of and setting a public hearing for 9:30 a.m. on June 6, 2006 at the meeting room of the Board of Supervisors and requiring that the notice of the public hearing and assessment ballots be mailed to all owners of property within Location 3 as shown on the equalized tax roll; and

**WHEREAS**, notice of said public hearing was duly published and mailed as required by Resolution No. 2006-086, Section 22626 of the Streets and Highways Code and Sections 53753 and 54954.6 of the Government Code and the assessment ballots were timely mailed to all owners of property within said Location 3 as shown on the equalized tax roll; and

**WHEREAS**, at 9:30 a.m. on June 6, 2006, as set forth in Resolution No. 2006-086, the Board of Supervisors held a public hearing and afforded all interested persons an opportunity to be heard, and considered all oral statements and all written protest or communications made or filed by any interested persons, closed the public hearing and directed the Director of Transportation, or his/her designee, as an impartial person having no vested interest in the annexation of Location 3 to Zone 41 of L&LM Dist.

1 No. 89-1-C as required by Section 53753(e) of the Government Code to tally the assessment ballots  
2 that had been received prior to the close of the public hearing; and

3 **WHEREAS**, the tally of the assessment ballots show that assessment ballots were timely  
4 received from the owners of 1285 parcels out of a possible 1298 parcels and that 1280 parcels (99  
5 percent of the assessment ballots received) voted in favor of annexation of Location 3 to Zone 41 of  
6 L&LM Dist. No. 89-1-C and the levy of an annual assessment in said Location 3 beginning fiscal year  
7 2006-07; and

8 **WHEREAS**, the Board of Supervisors may proceed, pursuant to Section 22631 of the Streets  
9 and Highways Code, to adopt a resolution confirming the diagram and assessment, either as originally  
10 proposed, or as changed by the Board, and the adoption of such a resolution shall constitute the levy of  
11 an assessment on all assessable lots and parcels of land within Location 3 of Zone 41 of L&LM Dist.  
12 No. 89-1-C beginning fiscal year 2006-07.

13 **NOW, THEREFOR, BE IT RESOLVED, FOUND, DETERMINED, AND ORDERED** by the  
14 Board of Supervisors of the County in regular session on July 11, 2006 as follows:

15 **Section 1. Findings.** The Board of Supervisors finds:

- 16 (a) the proceeding recitals are correct;
- 17 (b) compliance has been had with all the requirements of the Landscaping and Lighting Act  
18 of 1972, being Part 2 (commencing with Section 22500) of Division 15 of the Streets and  
19 Highways Code, and Sections 53753 and 54954.6 of the Government Code;
- 20 (c) a majority protest to the annexation of and annual assessment of Location 3 to Zone 41  
21 of L&LM Dist. No. 89-1-C has not been filed;
- 22 (d) the tally of the assessment ballots timely received was 99 percent voted in favor of the  
23 annexation of Location 3 to Zone 41 of L&LM Dist. No. 89-1-C and the levy of an annual  
24 assessment beginning fiscal year 2006-07, and 1 percent voted no;
- 25 (e) the Board of Supervisors may proceed to adopt a resolution ordering the annexation  
26 of Location 3 to Zone 41 of L&LM Dist. No. 89-1-C;

1 (f) the Board of Supervisors may proceed to adopt a resolution confirming the diagram and  
2 assessment for Location 3 of Zone 41 of L&LM Dist. No. 89-1-C either as originally  
3 proposed or as changed by it; and

4 (g) the assessments to be levied on the assessable lots and parcels of land within Location  
5 3 of Zone 41 of L&LM Dist. No. 89-1C for the installation, maintenance and servicing of  
6 catch basin filtration system improvements in said Location 3 during the fiscal year 2006-  
7 07 as contained in the report of the Director of Transportation which is on file with the  
8 Clerk of the Board of Supervisors (hereinafter the "Report") are based on benefits  
9 derived by such lots and parcels from the availability of such catch basin filtration system  
10 improvements, and are not based upon the ownership of such lots and parcels.

11 **Section 2. Annexation.** Location 3 of Zone 41, as proposed to be annexed to L&LM  
12 Dist. No. 89-1-C, includes all the property subject to Tract Map Nos. 31803, 30913, 30913-1, 30825,  
13 31726, 31726-1, 32125, 31931, 31622, 31063, 31725, 30820, 30895 and 31492 in the County of  
14 Riverside, State of California as described in Exhibit "A" attached hereto, shall be and is annexed into  
15 L&LM Dist. No. 89-1-C.

16 **Section 3. Improvements.** The improvements authorized for Location 3 of Zone 41 of  
17 L&LM Dist. No. 89-1-C are:

18 (a) The maintenance and servicing of catch basin filtrations systems within the  
19 public right-of-way including the removal of petroleum hydrocarbons and  
20 other pollutants from water runoff.

21 **Section 4. Confirmation of Report.** The Report and the assessment diagram and the  
22 assessment of estimated costs for the installation, maintenance and servicing of catch basin  
23 filtration systems in Location 3 of Zone 41 of L&LM Dist. No. 89-1-C for fiscal year 2006-07 as  
24 contained in the Report are confirmed.

25 **Section 5. Levy of Assessment.** Pursuant to Section 22631 of the Streets and Highways  
26 Code, the adoption of this resolution constitutes the levy of the assessment for the installation, and

1 maintenance or servicing of catch basin filtration system improvements in Location 3 of Zone 41 of  
2 L&LM Dist. No. 89-1-C during fiscal year 2006-07, as contained in the Report, and such assessment is  
3 levied. The Clerk of the Board of Supervisors is directed to file a certified copy of this resolution,  
4 together with the diagram and assessment contained in the Report with the County Auditor-Controller  
5 of the County of Riverside, who, pursuant to Section 22645 of the Streets and Highways Code, shall  
6 enter on the County Tax Roll opposite each lot or parcel of land the amount assesses thereupon, as  
7 shown in said assessment.

8 **Section 6.** **Effective Date.** This Resolution shall take effect from and after its date of  
9 adoption.

10  
11  
12  
13  
14  
15 FORM APPROVED  
COUNTY COUNSEL

16 JUN 22 2006

17 BY *[Signature]*  
18  
19  
20  
21  
22  
23  
24  
25  
26

1  
2  
3  
4 **EXHIBIT "A"**

5 **DESCRIPTION OF BOUNDARIES**

6 The boundaries of Location 3 of Zone 41 to be annexed into Landscaping and Lighting  
7 Maintenance District No.89-1-Consolidated, of the County of Riverside are coterminous  
8 with the boundaries of Lots 1 through 183 as shown on Tract Map No. 31803; Lots 1  
9 through 290 as shown on Tract Map Nos. 30913 and 30913-1; Lots 1 through 35 as  
10 shown on Tract Map No. 30825; Lots 1 through 186 as shown on Tract Map Nos. 31726  
11 and 31726-1; Lots 1 through 35 as shown on Tract Map No. 32125; Lots 1 through 47 as  
12 shown on Tract Map No. 31931; Lots 1 through 72 as shown on Tract Map No. 31622; Lots  
13 1 through 47 as shown on Tract Map No. 31063; Lots 1 through 121 as shown on Tract  
14 Map No. 31725; Lots 1 through 109 as shown on Tract Map No. 30820 and 30895; and  
15 Lots 1 through 173 as shown on Tract Map No. 31492 in the County of Riverside, State  
16 of California for fiscal year 2006-07.  
17  
18  
19  
20  
21  
22  
23  
24  
25  
26  
27  
28

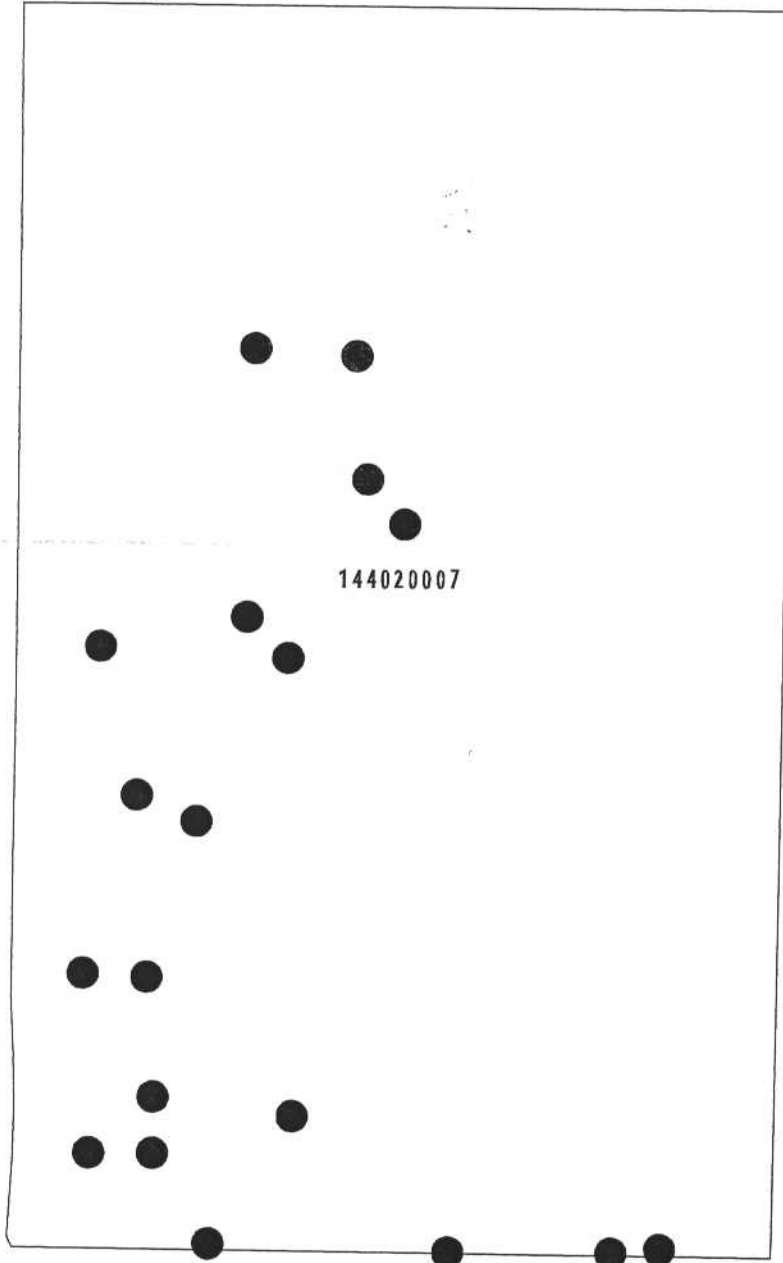
LANDSCAPING AND LIGHTING MAINTENANCE DISTRICT  
NO. 89-1-CONSOLIDATED

ZONE 41, LOCATION 3A  
PORTION OF SECTION 27, T.2S., R.7W.

TRACT NO. 31803  
183 PARCELS

ASSESSMENT DIAGRAM

CUCAMONGA CREEK STORM CHANNEL



SCALE: 1" = 300'

SCHLEISMAN RD

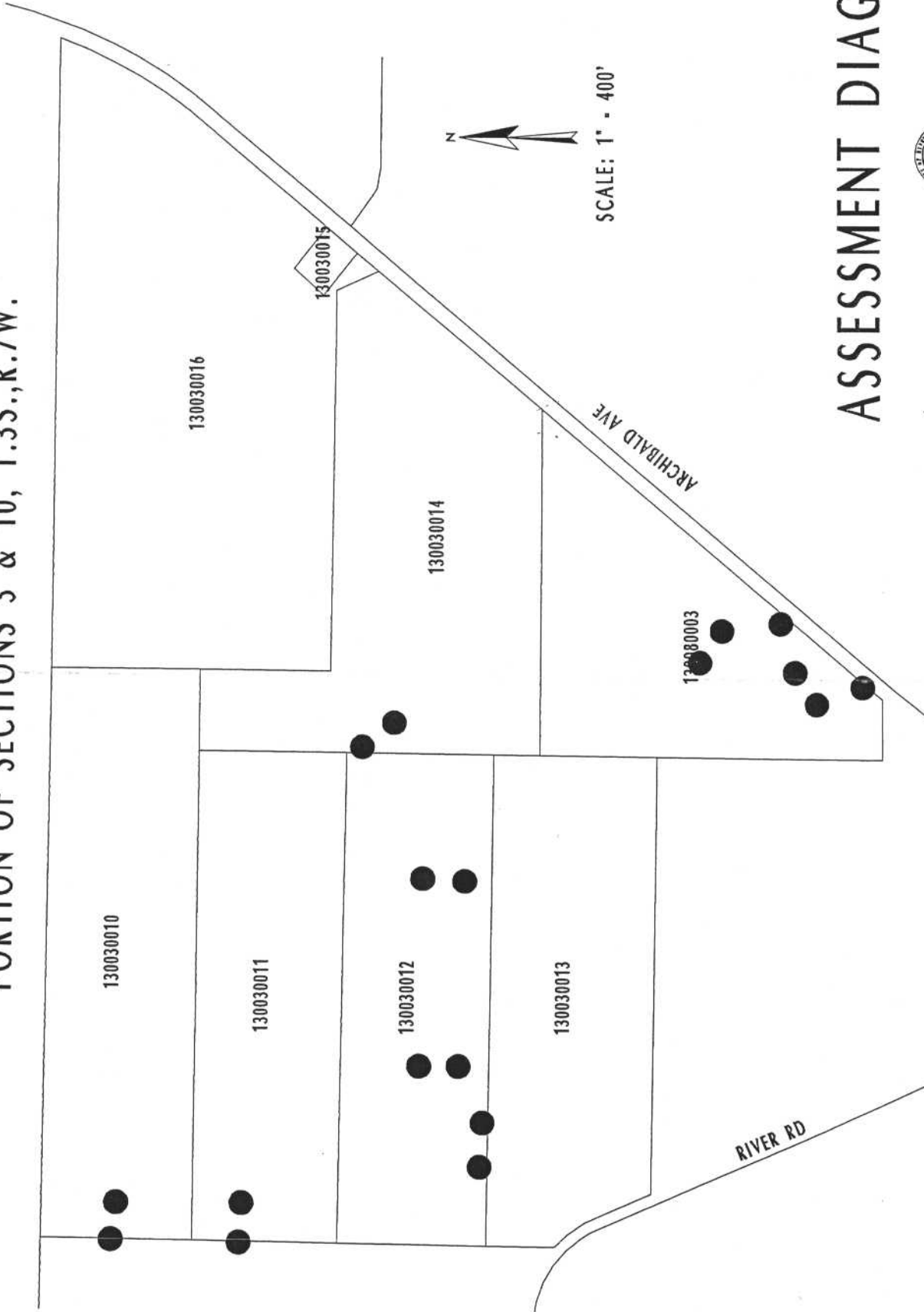
● DENOTES CATCH BASIN FILTRATION SYSTEM



This map was made by the Riverside County Geographic Information System. The map elements were produced by the Assessor and the Transportation and Land Management Agency which is comprised of the Transportation, Building & Safety, and Planning departments.

FEBRUARY 27 2006

**ZONE 41, LOCATION 3B**  
**PORTION OF SECTIONS 3 & 10, T.35.,R.7W.**



- DENOTES CATCH BASIN FILTRATION SYSTEM
- TRACT NOS. 30913 & 30913-1**  
**290 PARCELS**

**ASSESSMENT DIAGRAM**



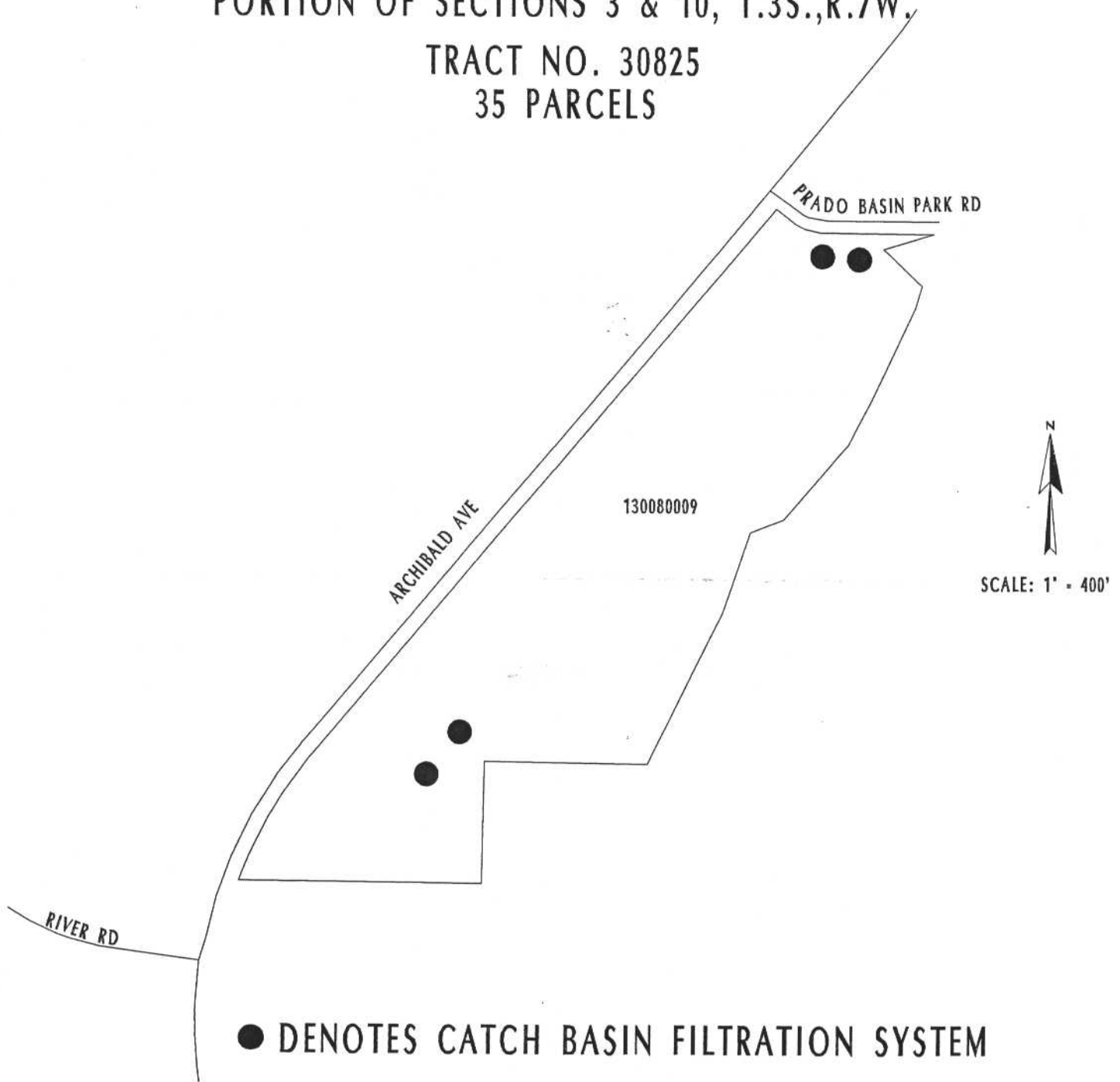
This map was made by the Riverside County Geographic Information System. The map elements were produced by the Assessor and the Transportation and Land Management Agency which is comprised of the Transportation, Building & Safety, and Planning departments.  
FEBRUARY 27, 2006

LANDSCAPING AND LIGHTING MAINTENANCE DISTRICT  
NO. 89-1-CONSOLIDATED

ZONE 41, LOCATION 3C

PORTION OF SECTIONS 3 & 10, T.3S.,R.7W.,

TRACT NO. 30825  
35 PARCELS



● DENOTES CATCH BASIN FILTRATION SYSTEM

ASSESSMENT DIAGRAM



This map was made by the Riverside County Geographic Information System. The map elements were produced by the Assessor and the Transportation and Land Management Agency which is comprised of the Transportation, Building & Safety, and Planning departments.

FEBRUARY 27, 2006

# ZONE 41, LOCATION 3D

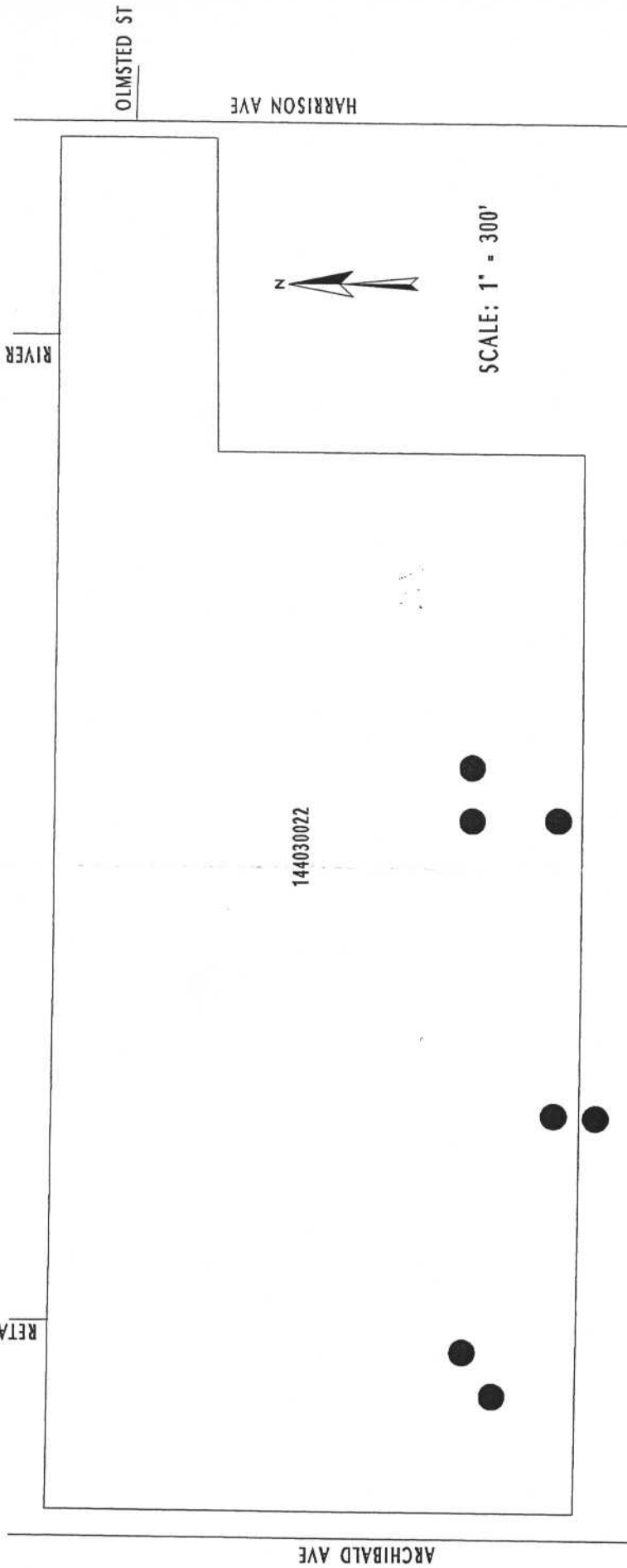
PORTION OF SECTION 26, T.2S., R.7W.

TRACT NOS. 31726 & 31726-1

186 PARCELS

RIVER DOWNS DR

RETAMA ST



● DENOTES CATCH BASIN FILTRATION SYSTEM



This map was made by the Riverside County Geographic Information System. The map elements were produced by the Assessor and the Transportation and Land Management Agency which is comprised of the Transportation, Building & Safety, and Planning department

FEBRUARY 27, 2006

# ASSESSMENT DIAGRAM

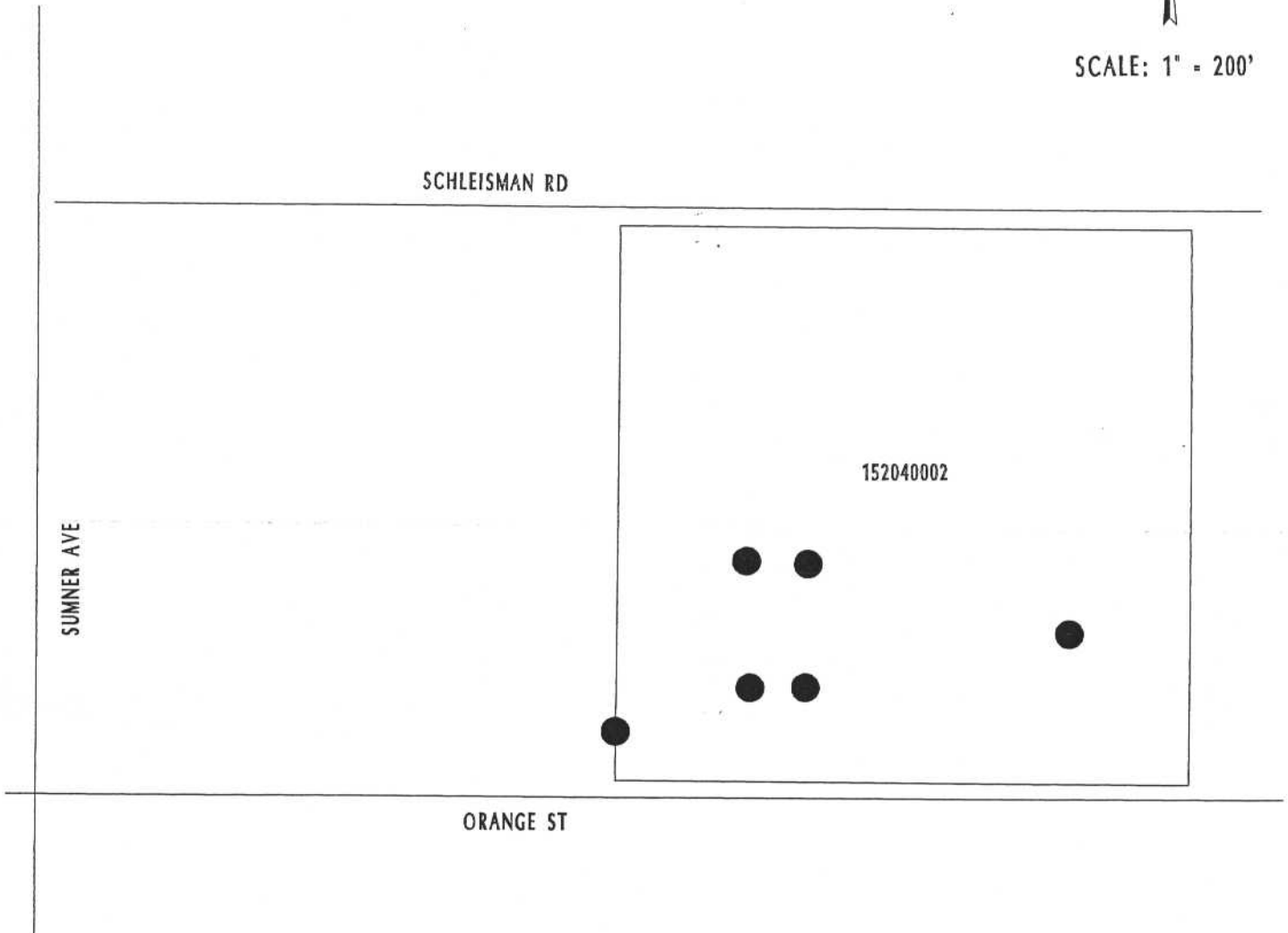
LANDSCAPING AND LIGHTING MAINTENANCE DISTRICT  
NO. 89-1-CONSOLIDATED

ZONE 41, LOCATION 3E  
PORTION OF SECTION 36, T.2.,R.7W.

TRACT NO. 32125  
35 PARCELS



SCALE: 1" = 200'



● DENOTES CATCH BASIN FILTRATION SYSTEM



# ASSESSMENT DIAGRAM

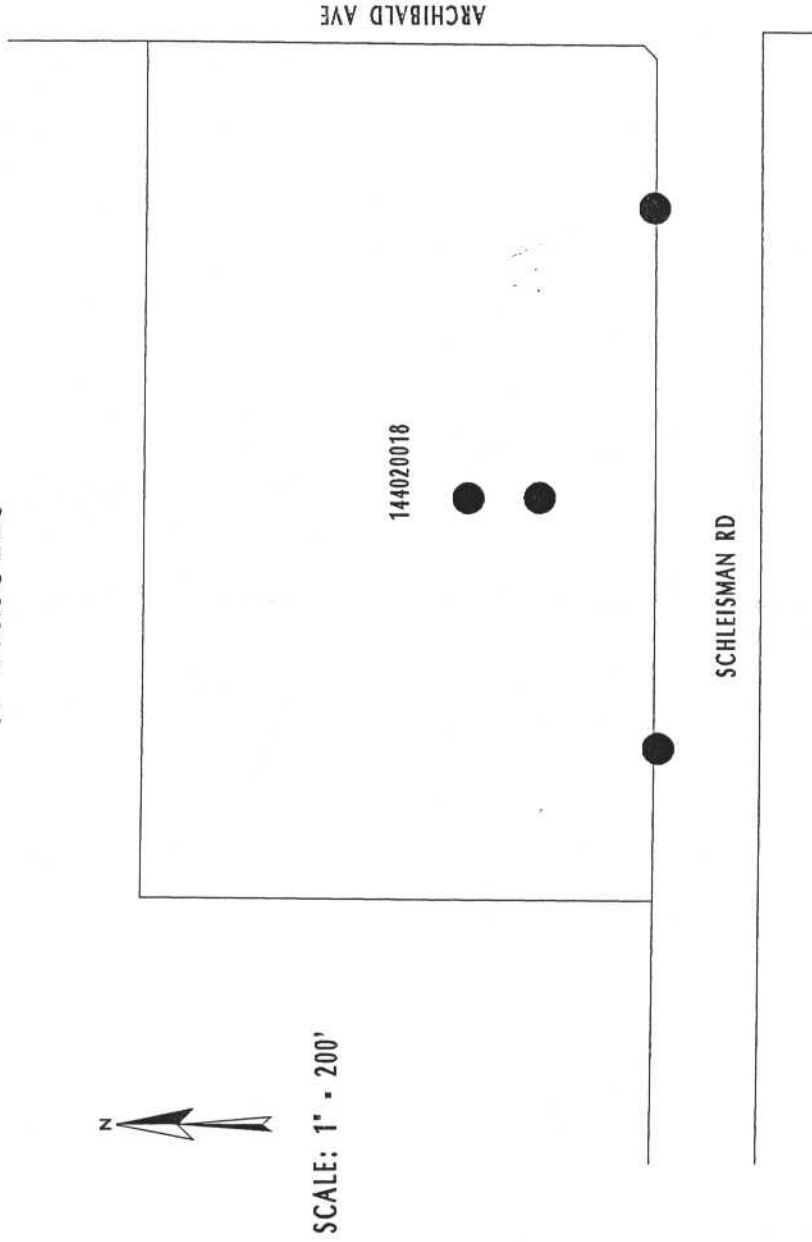
This map was made by the Riverside County Geographic Information System. The map elements were produced by the Assessor and the Transportation and Land Management Agency which is comprised of the Transportation, Building & Safety, and Planning departments.

FEBRUARY 28, 2006

LANDSCAPING AND LIGHTING MAINTENANCE DISTRICT NO. 89-1-CONSOLIDATED  
ZONE 41, LOCATION 3F

PORTION OF SECTION 27, T.2S., R.7W.

TRACT NO. 31931  
47 PARCELS



This map was made by the Riverside County Geographic Information System. The map elements were produced by the Assessor and the Transportation and Land Management Agency which is comprised of the Transportation, Building & Safety, and Planning departments.

FEBRUARY 28, 2006

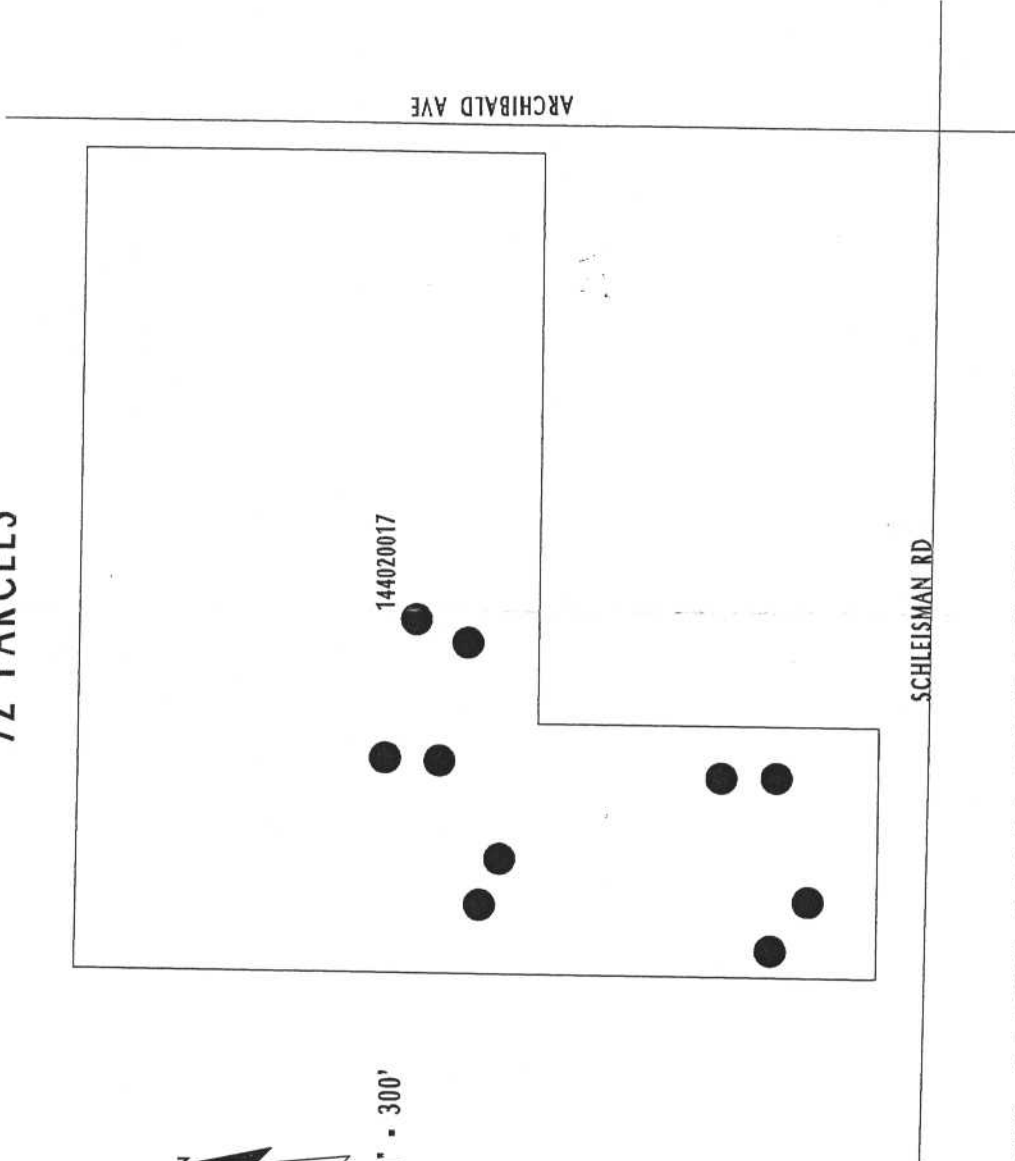
# ASSESSMENT DIAGRAM

PLANNING AND ENGINEERING DIVISION OF RIVERSIDE COUNTY

**ZONE 41, LOCATION 3G**  
PORTION OF SECTION 27, T.2S., R.7W.  
TRACT NO. 31622  
72 PARCELS



SCALE: 1" = 300'



● DENOTES CATCH BASIN FILTRATION SYSTEM

**ASSESSMENT DIAGRAM**



This map was made by the Riverside County Geographic Information System. The map elements were produced by the Assessor and the Transportation and Land Management Agency which is comprised of the Transportation, Building & Safety, and Planning departments.  
FEBRUARY 28, 2006

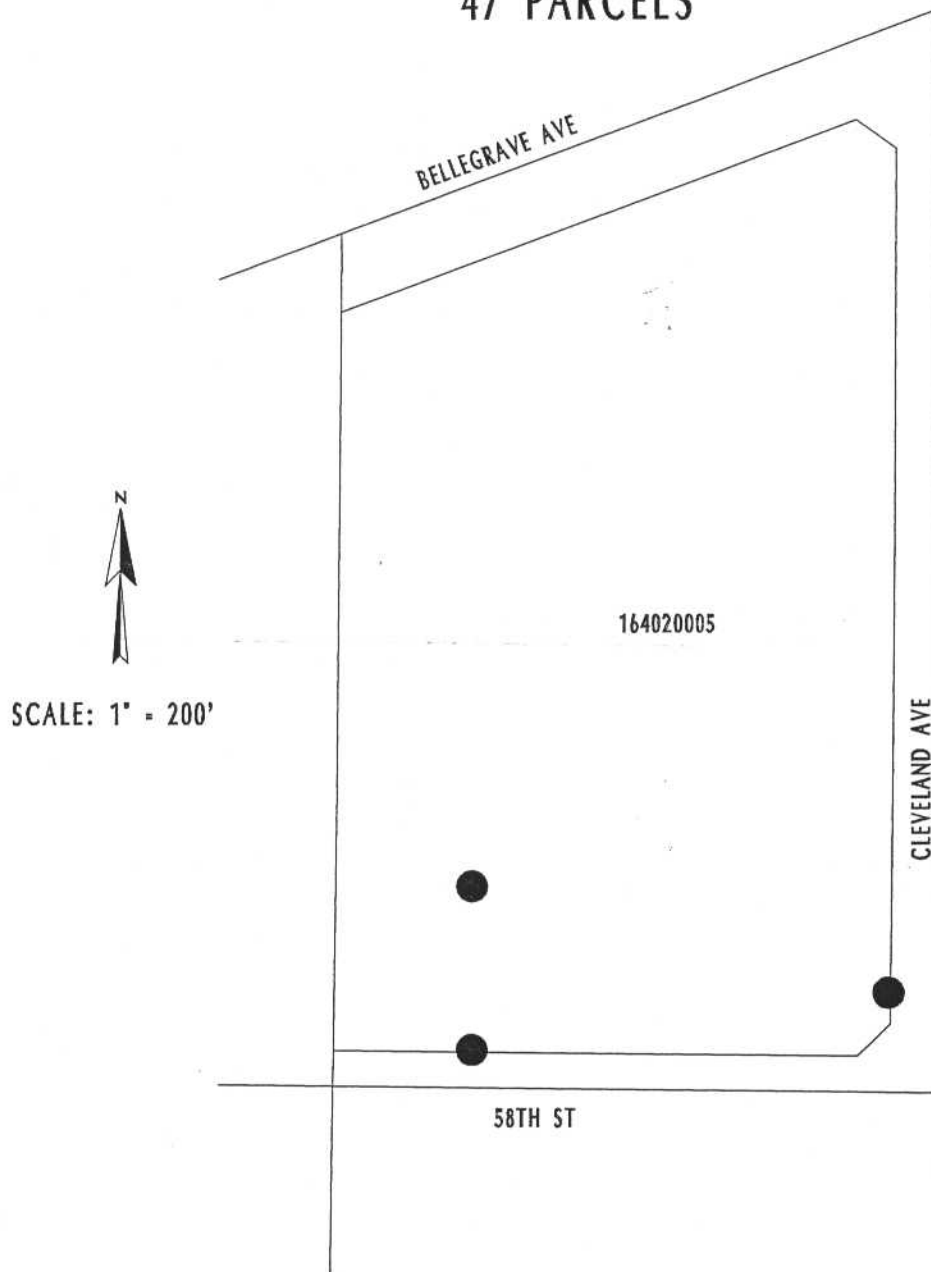
LANDSCAPING AND LIGHTING MAINTENANCE DISTRICT

NO. 89-1-CONSOLIDATED

**ZONE 41, LOCATION 3H**  
PORTION OF SECTION 24, T.2S.,R.7W.

TRACT NO. 31063

47 PARCELS



● DENOTES CATCH BASIN FILTRATION SYSTEM



**ASSESSMENT DIAGRAM**

This map was made by the Riverside County Geographic Information System. The map elements were produced by the Assessor's Office, Department of Transportation and Land Management Agency which is part of the Transportation, Building & Safety, and Planning department.

FEBRUARY 28, 2006

# LANDSCAPING AND LIGHTING MAINTENANCE DISTRICT

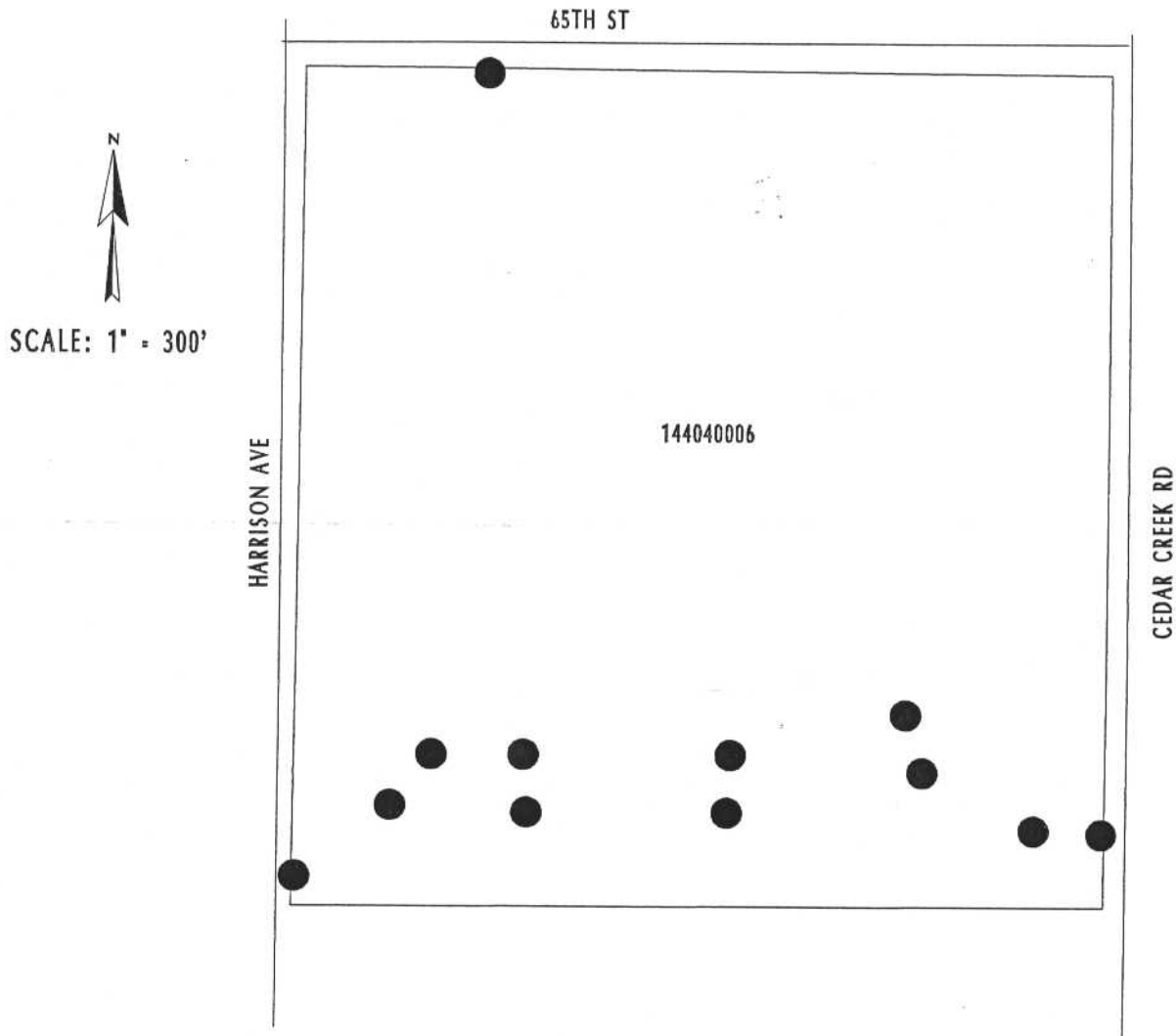
NO. 89-1-CONSOLIDATED

## ZONE 41, LOCATION 3I

PORTION OF SECTION 26, T.2S.,R.7W.

TRACT NO. 31725

121 PARCELS



● DENOTES CATCH BASIN FILTRATION SYSTEM

## ASSESSMENT DIAGRAM



This map was made by the Riverside County Geographic Information System. The map elements were produced by the Assessor and the Transportation and Land Management Agency which is comprised of the Transportation, Building & Safety, and Planning departments.

FEBRUARY 28, 2006



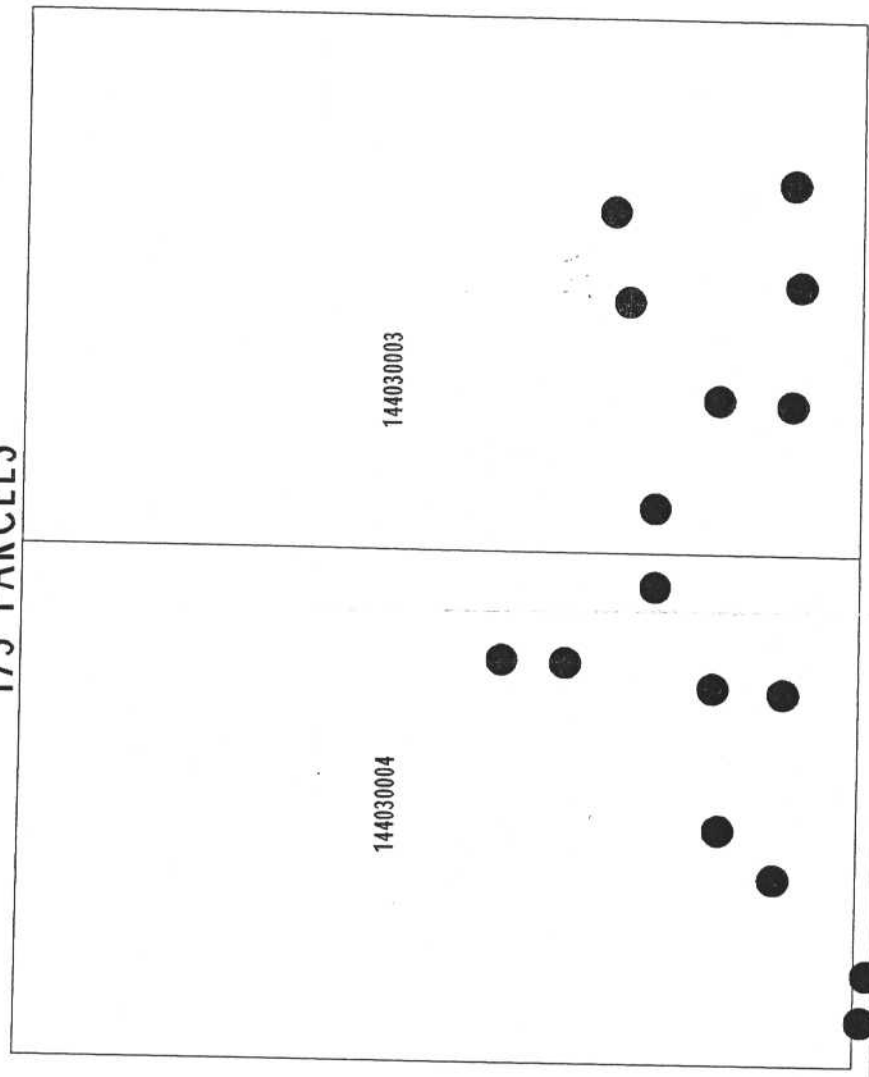
PLANNING AND ENGINEERING CONSULTANTS, INC. 10010 UNIVERSITY BLVD.

# ZONE 41, LOCATION 3K

PORTION OF SECTION 26, T.2S., R.7W.

TRACT NO. 31492

173 PARCELS



SCALE: 1" = 300



This map was made by the Riverside County Geographic Information System. The map elements were produced by the Assessor and the Transportation and Land Management Agency which is comprised of the Transportation, Building & Safety, and Planning departments.

MARCH 8, 2006

● DENOTES CATCH BASIN FILTRATION SYSTEM

## ASSESSMENT DIAGRAM