

SUBMITTAL TO THE BOARD OF SUPERVISORS
COUNTY OF RIVERSIDE, STATE OF CALIFORNIA

221 B



SUBMITTAL DATE:
August 21, 2006

FROM: TLMA – Transportation Dept.

SUBJECT: **TRACT 28886 (and Tract 28886 Offsite – MS 3872)**
A Schedule "A" Subdivision in the Menifee Area
EXTENSION OF TIME AGREEMENTS

RECOMMENDED MOTION: That the Board approve the attached agreements (which grant an extension of time for twelve months to complete improvements).

BACKGROUND: On July 30, 2002, the Board entered into agreements with WL Homes LLC, A Delaware LLC for the improvement of streets and the installation of a water and sewer system within the above referenced subdivision. Accompanying these agreements were faithful performance securities posted by Arch Insurance Company as follows:

- \$639,500 - Bond #3SM04581300 for the completion of street improvements
 - \$115,000 - Bond #3SM04581400 for the completion of the water system
 - \$190,000 - Bond #3SM04581500 for the completion of the sewer system
 - \$235,000 - Bond #3SM04581200 for the completion of street improvements (Offsite - MS 3872)
- (Continued)**

REVIEWED BY EXECUTIVE OFFICE

DATE 9/22/06 mg

Departmental Concurrence

HS:lf
Submittals: Vicinity Map
Road/Drainage Improvement Agrmts
Water System Improvement Agrmts
Sewer System Improvement Agrmts
Road/Drainage Imp. Agrmts (Offsite MS 3872)

George A. Johnson
Director of Transportation

- Consent
- Policy
- Consent
- Policy

Dep't Recomm.:
Per Exec. Ofc.:

Prev. Agn. Ref.: 07/30/02 - 2.15 | District: 3 | Agenda Number:

2.24

The Honorable Board of Supervisors

RE: Tract 28886 (and Tract 28886 Offsite – MS 3872)

August 21, 2006

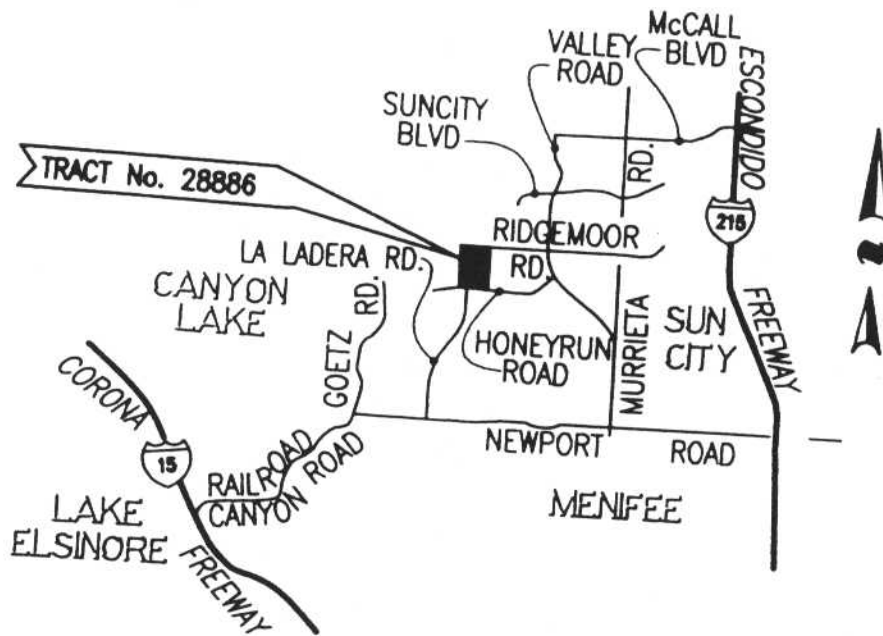
Page 2 of 2

The developer requests an extension of time for the completion of Tract 28886 (and Tract 28886 Offsite – MS 3872). Our records indicate that this project is approximately 90% completed for streets and utility work. The agreements for the extension of time have been approved by County Counsel.

Tract 28886

Schedule "A"

Supervisory District # 3



VICINITY MAP

NOT TO SCALE

SECTION 32, TOWNSHIP 5 SOUTH,
RANGE 3 WEST