

837A

**SUBMITTAL TO THE BOARD OF SUPERVISORS
COUNTY OF RIVERSIDE, STATE OF CALIFORNIA**

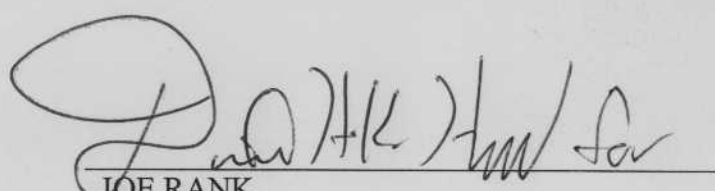


FROM: County Counsel
SUBJECT: Ordinance No. 348.4426

SUBMITTAL DATE: October 2, 2006

RECOMMENDED MOTION: That the Board of Supervisors adopt Ordinance No. 348.4426 amending the zoning in the Winchester Area shown on Map No. 2.2184 Change of Zone Case No. 7100.

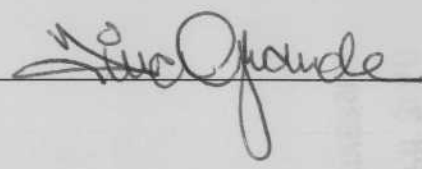
BACKGROUND: Change of Zone Case No. 7100 was approved by the Board of Supervisors on August 29, 2006.



JOE RANK
County Counsel

C.E.O. RECOMMENDATION: **APPROVE**

County Executive Office Signature



- Policy
- Policy
- Consent
- Consent

Department Recommendation:
Per Executive Office:

12:01 PM 11 OCT 2006
COUNTY OF RIVERSIDE, CALIFORNIA

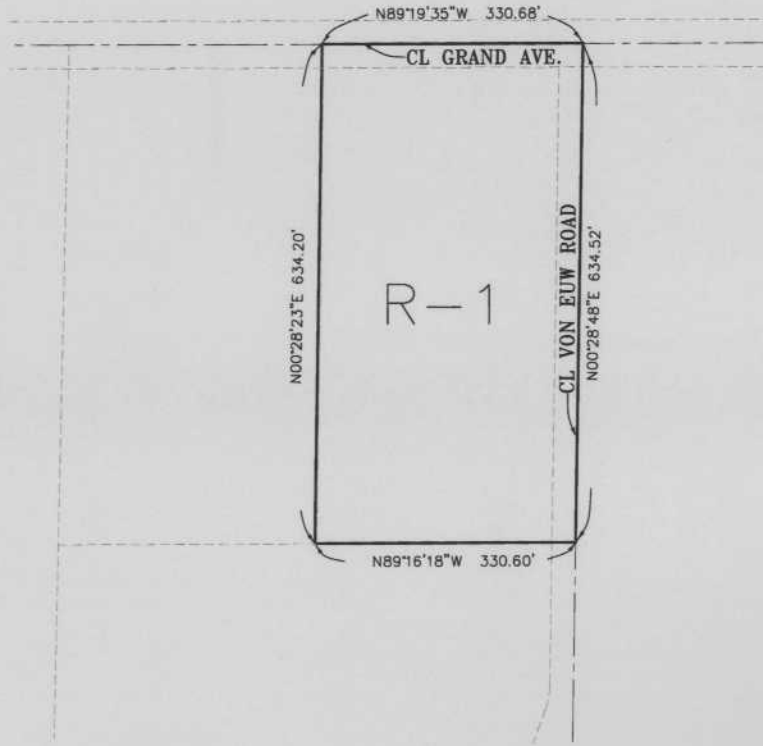
Prev. Agn. ref.

Dist. THIRD

AGENDA NO.

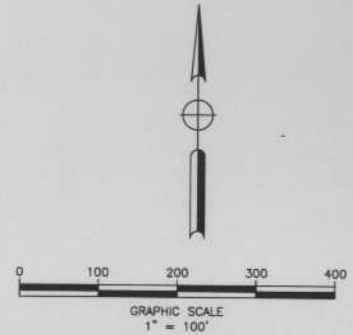
2 . 11

WINCHESTER AREA
PORTION N 1/2 SEC. 29, T.5 S., R.2 W. S.B.M.



LEGEND

R-1	ONE-FAMILY DWELLINGS 7,200 SQ. FT. MINIMUM LOT AREA
-----	--



MAP NO. 2.2184
CHANGE OF OFFICIAL ZONING PLAN
AMENDING
MAP NO. 2 ORDINANCE NO. 348
CHANGE OF ZONE CASE NO. 7100
ADOPTED BY ORDINANCE NO. 348.4426
OCTOBER 17, 2006
RIVERSIDE COUNTY BOARD OF SUPERVISORS

APN 462-020-034