

133A  
SUBMITTAL TO THE BOARD OF SUPERVISORS  
COUNTY OF RIVERSIDE, STATE OF CALIFORNIA



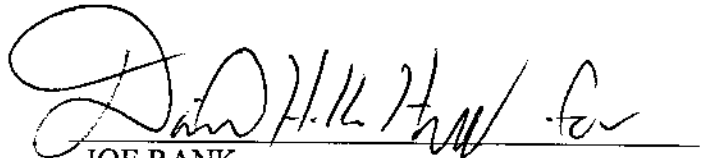
FROM: County Counsel

SUBMITTAL DATE: October 17, 2006

SUBJECT: Ordinance No. 348.4436

RECOMMENDED MOTION: That the Board of Supervisors adopt Ordinance No. 348.4436 amending the zoning in the Juniper Flats Area shown on Map No. 2.2193 Change of Zone Case No. 7025.

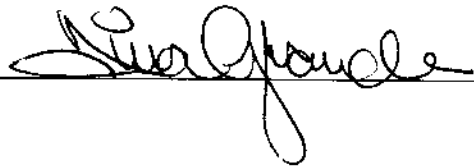
BACKGROUND: Change of Zone Case No. 7025 was approved by the Board of Supervisors on October 3, 2006.

  
JOE RANK  
County Counsel

C.E.O. RECOMMENDATION:

APPROVE

County Executive Office Signature



Policy  
 Policy

Consent  
 Consent

Department Recommendation:  
Per Executive Office:

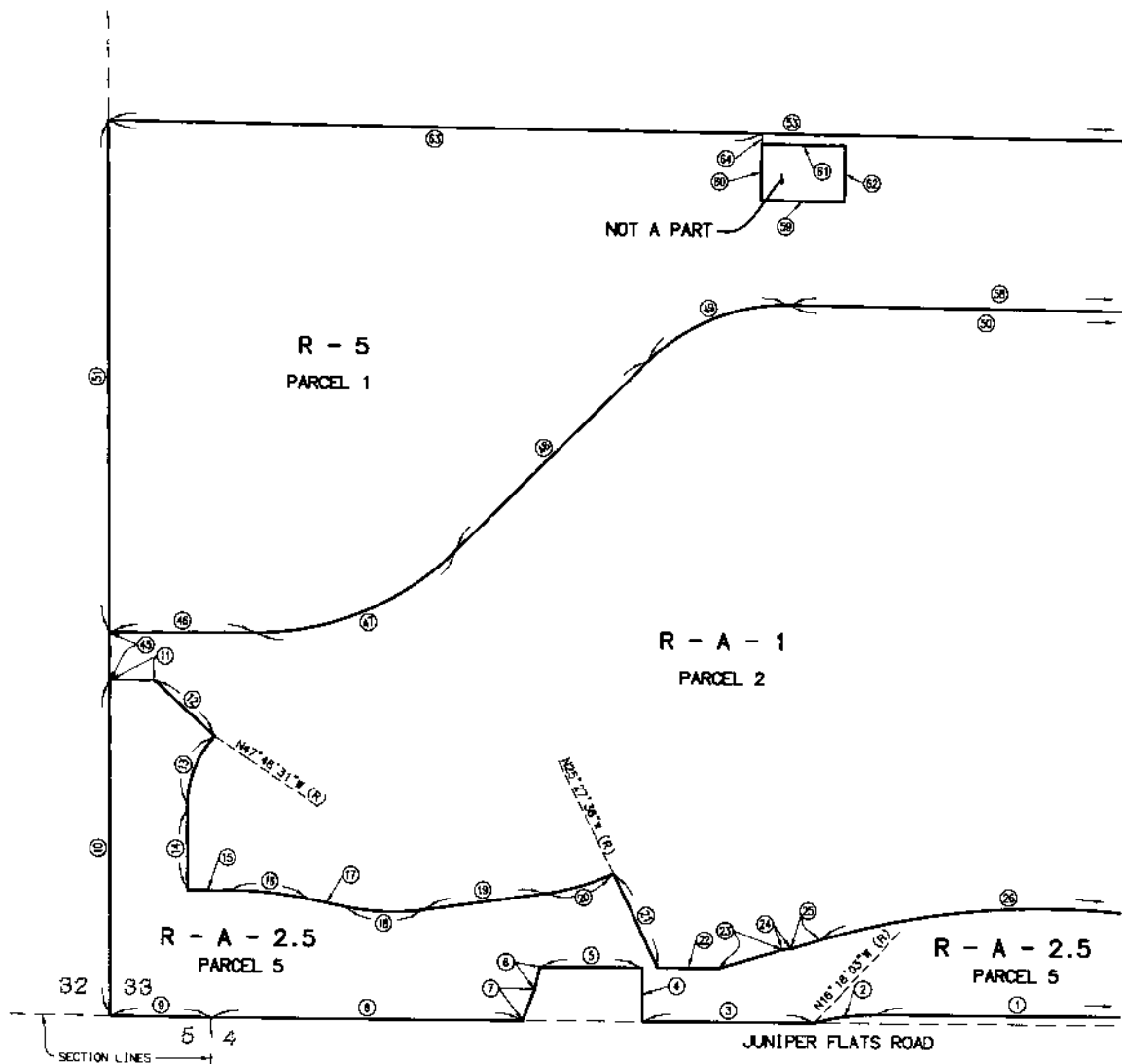
Prev. Agn. ref.

Dist. FIFTH

AGENDA NO.



JUNIPER FLATS AREA  
 SEC. 33 T. 4 S., R. 2 W., S.B.B. & M.



SEE SHEET 2

SEE SHEET 2

T. 5 S., R. 2 W., S.B.B. & M.

NOTE:  
 SEE DATA TABLE ON SHEET 2

LEGEND

R - 5	OPEN AREA COMBINING ZONE RESIDENTIAL DEVELOPMENTS
R - A - 1	RESIDENTIAL AGRICULTURAL 1 ACRE MIN. LOT AREA
R - A - 2.5	RESIDENTIAL AGRICULTURAL 2.5 ACRE MIN. LOT AREA

MAP NO. 2.2193

CHANGE OF OFFICIAL ZONING PLAN  
 AMENDING

MAP NO. 2, ORDINANCE NO. 348

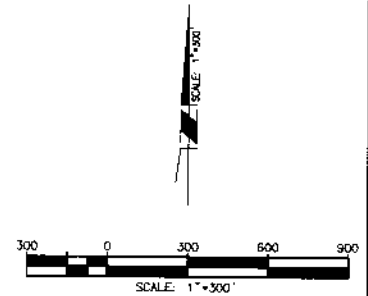
CHANGE OF ZONE CASE NO. 7025

ADOPTED BY ORDINANCE NO. 348.4436

OCTOBER 31, 2006

RIVERSIDE COUNTY BOARD OF SUPERVISORS

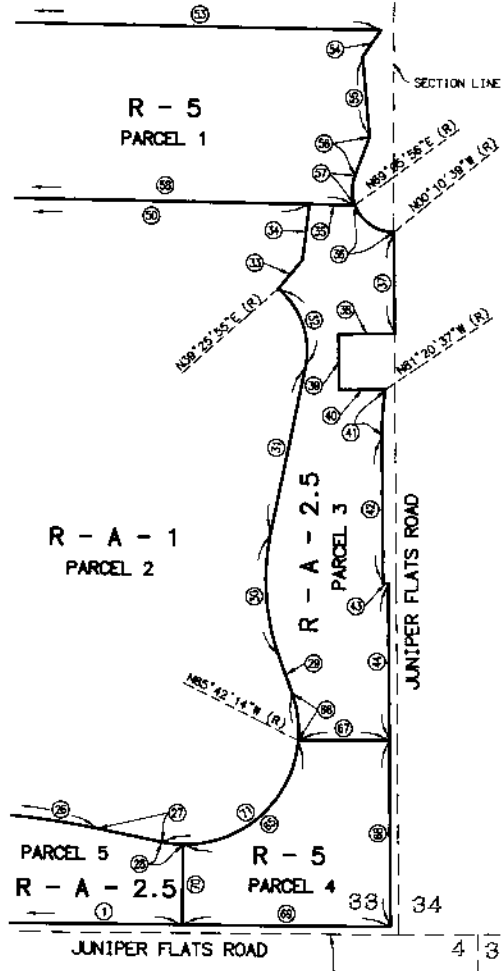
APN'S: 429-130-002, 004, 005,  
 429-250-001, 002, 004, 006, 008



JUNIPER FLATS AREA  
 SEC. 33 T. 4 S., R. 2 W., S.B.B. & M.

SEE SHEET 1

SEE SHEET 1



(NO)	BEARING/Delta	RADIUS	LENGTH
1	N89°56'54"W	---	1556.72'
2	∠=16°20'47"	850.00'	236.80'
3	N89°59'19"E	---	660.31'
4	N00°30'54"W	---	208.00'
5	N89°59'19"E	---	383.06'
6	N12°30'34"E	---	88.30'
7	N20°33'04"E	---	130.11'
8	N89°59'19"E	---	1196.48'
9	N89°34'17"W	---	388.22'
10	N00°30'54"W	---	1289.57'
11	N88°29'06"E	---	170.83'
12	N47°48'31"W	---	316.58'
13	∠=42°42'23"	400.00'	298.15'
14	N00°30'54"W	---	320.82'
15	N89°29'06"E	---	156.27'
16	∠=11°56'25"	1500.00'	312.60'
17	N78°34'29"W	---	139.79'
18	∠=19°28'53"	900.00'	306.01'
19	N81°56'38"E	---	472.34'
20	∠=17°24'14"	900.00'	273.38'
21	N25°27'36"W	---	388.47'
22	N89°59'19"E	---	235.28'
23	N73°14'31"E	---	254.19'
24	N82°36'28"E	---	32.42'
25	N73°14'31"E	---	118.00'
26	∠=28°04'51"	3000.00'	1470.31'
27	N78°40'38"W	---	245.23'
28	∠=10°52'23"	425.00'	80.66'
29	N19°57'26"W	---	146.03'
30	∠=31°20'57"	850.00'	465.03'
31	N11°23'32"E	---	638.82'
32	∠=61°57'37"	300.00'	324.42'
33	N39°25'55"E	---	141.23'
34	N06°54'20"E	---	209.61'
35	N89°21'37"W	---	189.40'
36	∠=69°16'34"	155.61'	188.15'
37	N00°46'27"W	---	379.74'
38	N89°15'15"E	---	208.71'
39	N00°46'27"W	---	208.71'
40	N89°15'15"E	---	172.90'
41	∠=09°25'50"	1050.00'	172.82'
42	N00°46'27"W	---	565.22'
43	N89°28'38"W	---	20.01'
44	N00°46'27"W	---	585.98'
45	N00°30'54"W	---	183.67'
46	N89°29'06"E	---	580.80'
47	∠=44°53'15"	1100.00'	855.38'
48	N44°56'51"E	---	1036.96'
49	∠=45°42'32"	750.00'	588.33'
50	N89°21'37"W	---	2387.73'
51	N00°30'54"W	---	1966.87'
52	---	---	---
53	N89°21'37"W	---	5249.00'
54	N34°08'23"E	---	120.22'
55	N05°14'14"W	---	301.21'
56	N20°09'27"E	---	154.91'
57	∠=41°03'31"	155.61'	111.51'
58	N89°21'37"W	---	2537.13'
59	N89°21'37"W	---	320.00'
60	N00°36'23"E	---	215.00'
61	N89°21'37"W	---	320.00'
62	N00°36'23"E	---	215.00'
63	N89°21'37"W	---	2510.53'
64	N00°36'23"E	---	40.00'
65	∠=86°09'11"	425.00'	639.05'
66	∠=24°15'11"	425.00'	179.90'
67	N89°13'33"E	---	340.02'
68	N00°46'27"W	---	698.57'
69	N89°56'54"W	---	778.82'
70	N00°26'57"E	---	300.07'
71	∠=87°01'36"	425.00'	719.71'

LEGEND

- R - 5 OPEN AREA COMBINING ZONE RESIDENTIAL DEVELOPMENTS
- R - A - 1 RESIDENTIAL AGRICULTURAL 1 ACRE MIN. LOT AREA
- R - A - 2.5 RESIDENTIAL AGRICULTURAL 2.5 ACRE MIN. LOT AREA

MAP NO. 2.2193

CHANGE OF OFFICIAL ZONING PLAN  
 AMENDING  
 MAP NO. 2, ORDINANCE NO. 348  
 CHANGE OF ZONE CASE NO. 7025  
 ADOPTED BY ORDINANCE NO. 348.4438  
 OCTOBER 31, 2006  
 RIVERSIDE COUNTY BOARD OF SUPERVISORS

