

210A
SUBMITTAL TO THE BOARD OF SUPERVISORS
COUNTY OF RIVERSIDE, STATE OF CALIFORNIA



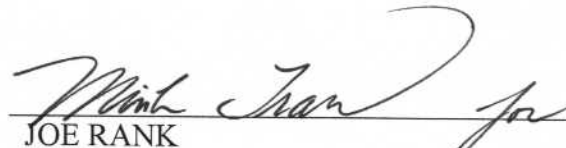
FROM: County Counsel

SUBMITTAL DATE: October 24, 2006

SUBJECT: Ordinance No. 348.4438

RECOMMENDED MOTION: That the Board of Supervisors adopt Ordinance No. 348.4438 amending the zoning in the Whitewater Area shown on Map No. 2.2194 Change of Zone Case No. 7251.

BACKGROUND: Change of Zone Case No. 7251 was approved by the Board of Supervisors on September 12, 2006.



JOE RANK
County Counsel

C.E.O. RECOMMENDATION: **APPROVE**

County Executive Office Signature



Policy
 Policy

Consent
 Consent

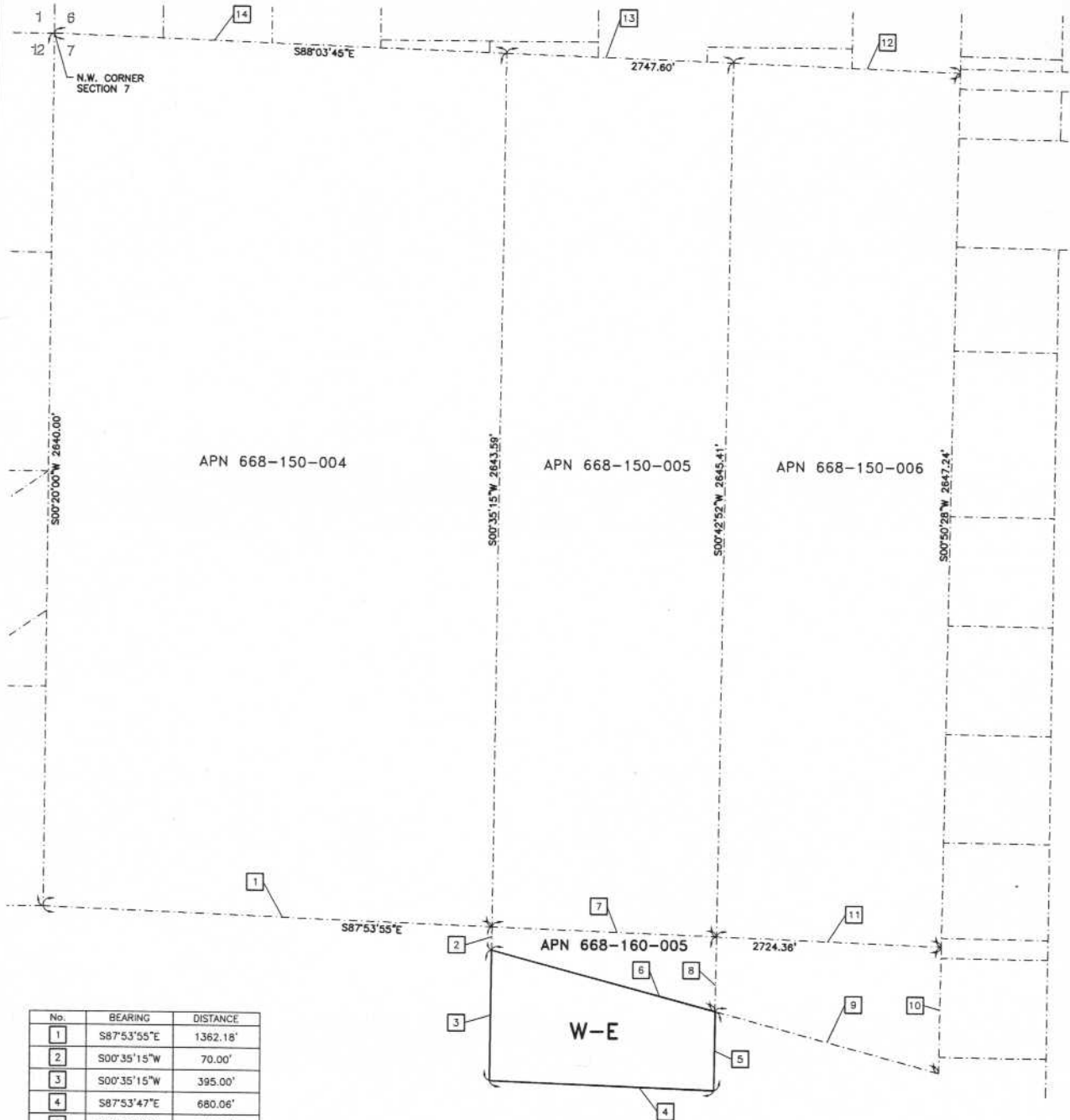
Department Recommendation:
Per Executive Office:

Prev. Agn. ref.

Dist. FIRST

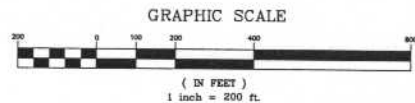
AGENDA NO.

WHITEWATER AREA
SEC.7, T.3S., R.4E. S.B.B. & M.



No.	BEARING	DISTANCE
1	S87°53'55"E	1362.18'
2	S00°35'15"W	70.00'
3	S00°35'15"W	395.00'
4	S87°53'47"E	680.06'
5	S00°42'52"W	238.53'
6	S75°01'49"E	702.36'
7	S87°53'55"E	681.09'
8	S00°42'52"W	226.47'
9	S75°01'49"E	701.65'
10	S00°50'28"W	382.76'
11	S87°53'55"E	681.09'
12	S88°03'45"E	686.90'
13	S88°03'45"E	686.90'
14	S88°03'45"E	1373.80'

LEGEND
W-E WIND ENERGY RESOURCE ZONE



MAP No. 2.2194
CHANGE OF OFFICIAL ZONING PLAN
AMENDING
MAP No. 2, ORDINANCE No. 348
CHANGE OF ZONE CASE No. CZ07251

ADOPTED BY ORDINANCE No. 348.4338
DATE: NOVEMBER 7, 2006
RIVERSIDE COUNTY BOARD OF SUPERVISORS

