

931A

**SUBMITTAL TO THE BOARD OF SUPERVISORS  
COUNTY OF RIVERSIDE, STATE OF CALIFORNIA**



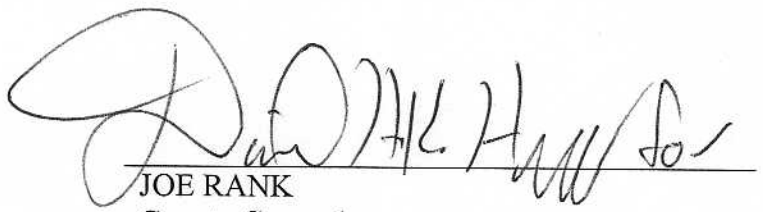
**FROM:** County Counsel

**SUBMITTAL DATE:** December 20, 2006

**SUBJECT:** Ordinance No. 348.4457

**RECOMMENDED MOTION:** That the Board of Supervisors adopt Ordinance No. 348.4457 amending the zoning in the Antelope Valley Area shown on Map No. 2.2206 Change of Zone Case No. 6993.

**BACKGROUND:** Change of Zone Case No. 6993 was approved by the Board of Supervisors on November 7, 2006.

  
\_\_\_\_\_  
JOE RANK  
County Counsel

**C.E.O. RECOMMENDATION: APPROVE**

County Executive Office Signature



Policy

Consent

Department Recommendation:  
Per Executive Office:

SD-SIGN-3-MAL 005  
RECEIVED RIVERSIDE COUNTY  
CLERK BOARD OF SUPERVISORS

Prev. Agn. ref.

Dist. THIRD

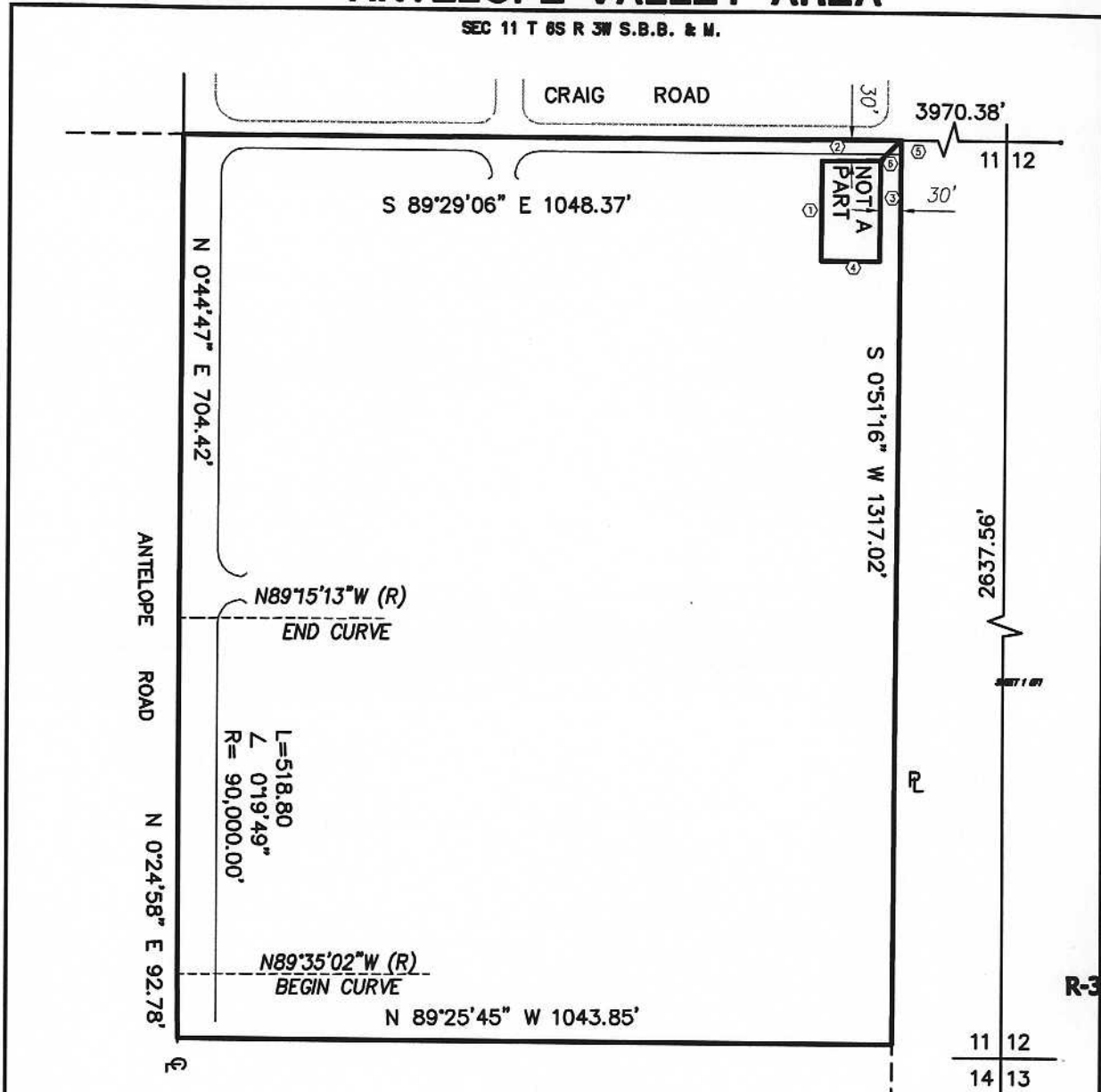
AGENDA NO.

2.10



# ANTELOPE VALLEY AREA

SEC 11 T 6S R 3W S.B.B. & M.



MAP NO. 2.2206

CHANGE OF OFFICIAL ZONING PLAN  
AMENDING

MAP NO. 2 ORDINANCE NO. 348

CHANGE OF ZONE CASE NO. 6993

ADOPTED BY ORDINANCE NO. 348.4457

DATE: JANUARY 9, 2007

RIVERSIDE COUNTY BOARD OF SUPERVISORS

LEGEND

**R-3** GENERAL RESIDENTIAL

ASSESSOR'S PARCEL NUMBER

372-050-002  
372-050-020

0 50 100' 200'  
SCALE: 1"=100'-0"



⑥	BEARING/Delta	LENGTH	COMMENT
1	N 0°51'16" E	100.00	---
2	N 89°29'06" W	85.00	---
3	N 0°51'16" E	100.00	---
4	N 89°29'06" W	85.00	---
5	N 89°28'53" W	3970.38	THE LINE
6	N 45°40'59" E	42.55	THE LINE