

SUBMITTAL TO THE BOARD OF SUPERVISORS
COUNTY OF RIVERSIDE, STATE OF CALIFORNIA

131A



FROM: County Counsel
SUBJECT: Ordinance No. 348.4461

SUBMITTAL DATE: January 8, 2007

RECOMMENDED MOTION: That the Board of Supervisors adopt Ordinance No. 348.4461 amending the zoning in the Rancho California Area shown on Map No. 2.2207 Change of Zone Case No. 6509.

BACKGROUND: Change of Zone Case No. 6509 was approved by the Board of Supervisors on August 28, 2001.

Joe Rank
JOE RANK
County Counsel

C.E.O. RECOMMENDATION: **APPROVE**

Policy
 Policy

County Executive Office Signature

[Signature]

Consent
 Consent

Department Recommendation:
Per Executive Office:

8:01 AM T1 MAIL ROOM

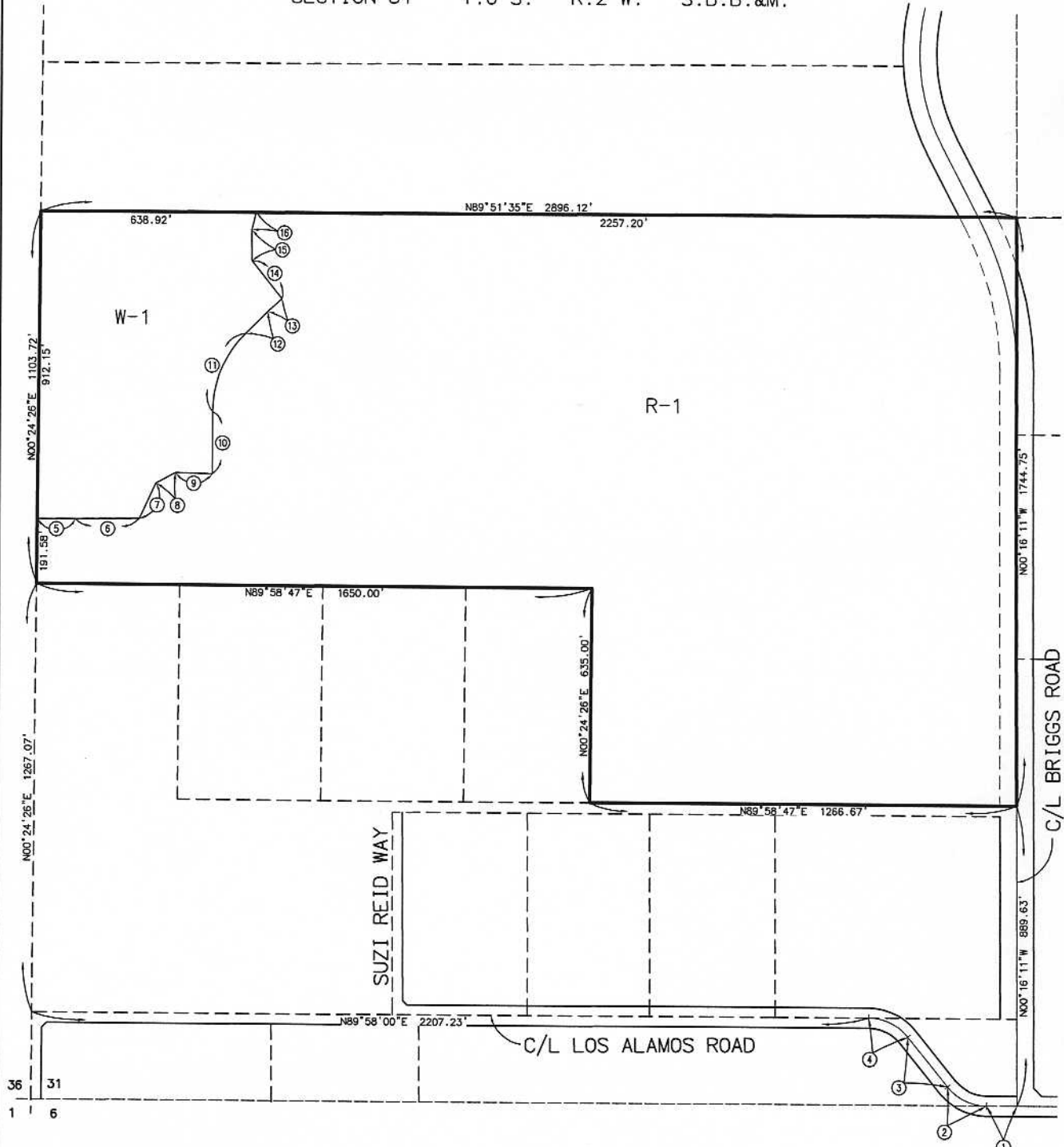
Prev. Agn. ref. RECEIVED RIVERSIDE COUNTY

Dist. THIRD

AGENDA NO.

RANCHO CALIFORNIA AREA

SECTION 31 T.6 S. R.2 W. S.B.B.&M.



DATA TABLE

(NO)	BEARING/DELTA	RADIUS	LENGTH
1	N89°58'47"E	--	90.75'
2	51°06'38"	150.00'	133.81'
3	N38°54'35"W	--	188.20'
4	51°07'25"	150.00'	133.84'
5	N89°45'21"E	--	112.95'
6	N89°04'38"E	--	180.44'
7	N24°24'34"E	--	116.42'
8	N61°51'22"E	--	65.76'
9	N88°34'17"W	--	109.10'
10	N00°01'13"W	--	183.49'
11	45°00'00"	330.00'	259.18'
12	N44°58'47"E	--	92.93'
13	06°08'04"	530.00'	56.74'
14	N38°53'09"W	--	143.86'
15	N00°18'50"W	--	91.42'
16	N14°22'39"E	--	53.59'

LEGEND

R-1 ONE-FAMILY DWELLINGS

MAP NO. 2.2207

CHANGE OF OFFICIAL ZONING PLAN
AMENDING

MAP NO. 2, ORDINANCE NO. 348

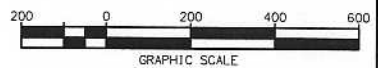
CHANGE OF ZONE CASE NO. 6509

AMENDING ORDINANCE NO. 348.

ADOPTED BY ORDINANCE NO. 348.4461

JANUARY 23, 2007

RIVERSIDE COUNTY BOARD OF SUPERVISORS



APN 467-230-041
APN 467-910-001 thru 042 and 467-911-001 thru 011
APN 467-920-001 thru 009, 467-921-001 thru 015,
APN 467-922-001 thru 022 and 467-923-001 thru 016
APN 467-930-001 thru 018, 476-931-001 thru 013,
and 467-932-001 thru 015
APN 467-940-001 thru 049 and 467-950-001 thru 037