

660A

**SUBMITTAL TO THE BOARD OF SUPERVISORS
COUNTY OF RIVERSIDE, STATE OF CALIFORNIA**



FROM: County Counsel

SUBMITTAL DATE: February 26, 2007

SUBJECT: Ordinance No. 348.4475

RECOMMENDED MOTION: That the Board of Supervisors adopt Ordinance No. 348.4475 amending the zoning in the Rancho California Area shown on Map No. 2.2217 Change of Zone Case No. 7113.

BACKGROUND: Change of Zone Case No. 7113 was approved by the Board of Supervisors on January 23, 2007.

Joe Rank

JOE RANK
County Counsel

C.E.O. RECOMMENDATION: APPROVE

County Executive Office Signature

[Signature]

Policy

Consent

Department Recommendation:
Per Executive Office:

RECEIVED RIVERSIDE COUNTY
FEB 28 11:52 AM '07

Prev. Agn. ref.

Dist. THIRD

AGENDA NO.

2.12

RANCHO CALIFORNIA AREA
SECTION 22, T. 8 S., R. 2 W., S.B.M.

SHEET 1 OF 9

SEE SHEET 9 OF 9 FOR AMENDMENT BOUNDARY

BASIS OF BEARINGS:

THE BASIS OF BEARING HEREON IS THE CENTERLINE OF EL CHIMALSAL ROAD BEING N 46°45'33" W AS SHOWN ON TRACT NO. 29473-1 FILED IN BOOK 394, OF MAPS PAGES 1 THROUGH 9, RECORDS OF RIVERSIDE COUNTY.



LEGEND:

- R-1 ONE-FAMILY DWELLINGS
- R-5 OPEN AREA COMBINING ZONE RESIDENTIAL DEVELOPMENTS

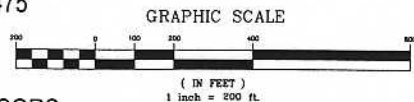
MAP NO. 2.2217

CHANGE OF OFFICIAL ZONING PLAN
AMENDING
MAP NO. 2 ORDINANCE NO. 348

CHANGE OF ZONE CASE NO. 07113
ADOPTED BY ORDINANCE NO. 348.4475
DATE: MARCH 13, 2007

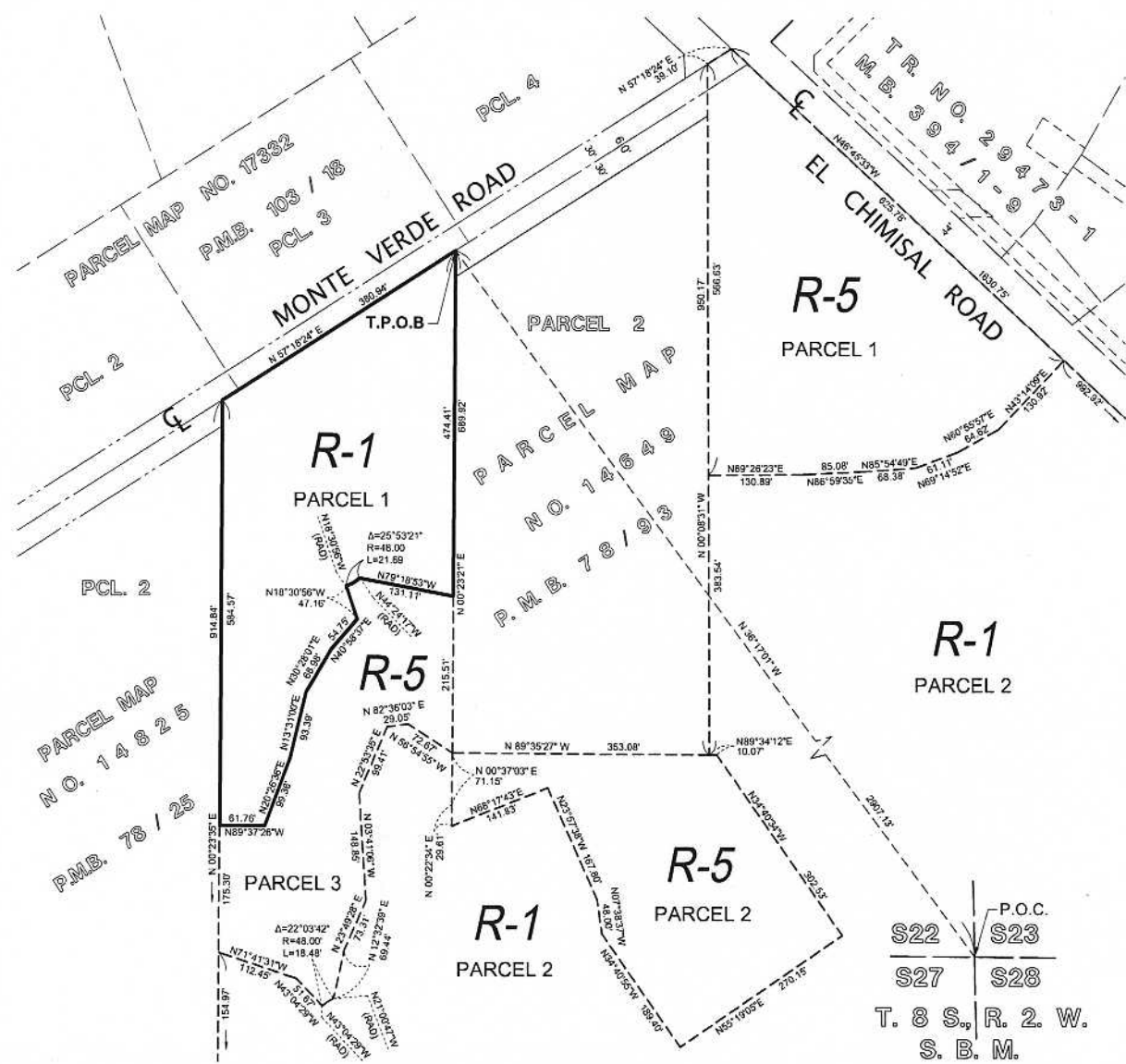
- A.P.N. NO'S
- 917-260-044,
- 917-260-045,
- 917-260-047,
- 917-260-048,
- 917-260-054,
- 917-260-055,
- 917-260-065,
- 917-260-066,
- 917-260-067,
- 917-260-068,
- 917-260-086

S22 S23
S27 S28
T.8S., R.2.W.
S.B.M.



RIVERSIDE COUNTY BOARD OF SUPERVISORS

SEE SHEET 9 OF 9 FOR AMENDMENT BOUNDARY



LEGEND:

- R-1 ONE-FAMILY DWELLINGS
- R-5 OPEN AREA COMBINING ZONE RESIDENTIAL DEVELOPMENTS

A.P.N. NO'S
917-260-044,
917-260-045,
917-260-047,
917-260-048,
917-260-054,
917-260-055,
917-260-065,
917-260-066,
917-260-067,
917-260-068,
917-260-086

MAP NO. 2.2217

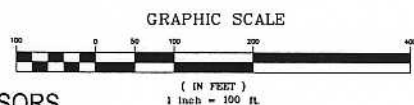
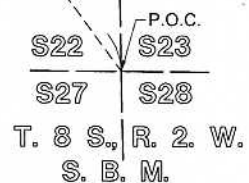
CHANGE OF OFFICIAL ZONING PLAN
AMENDING

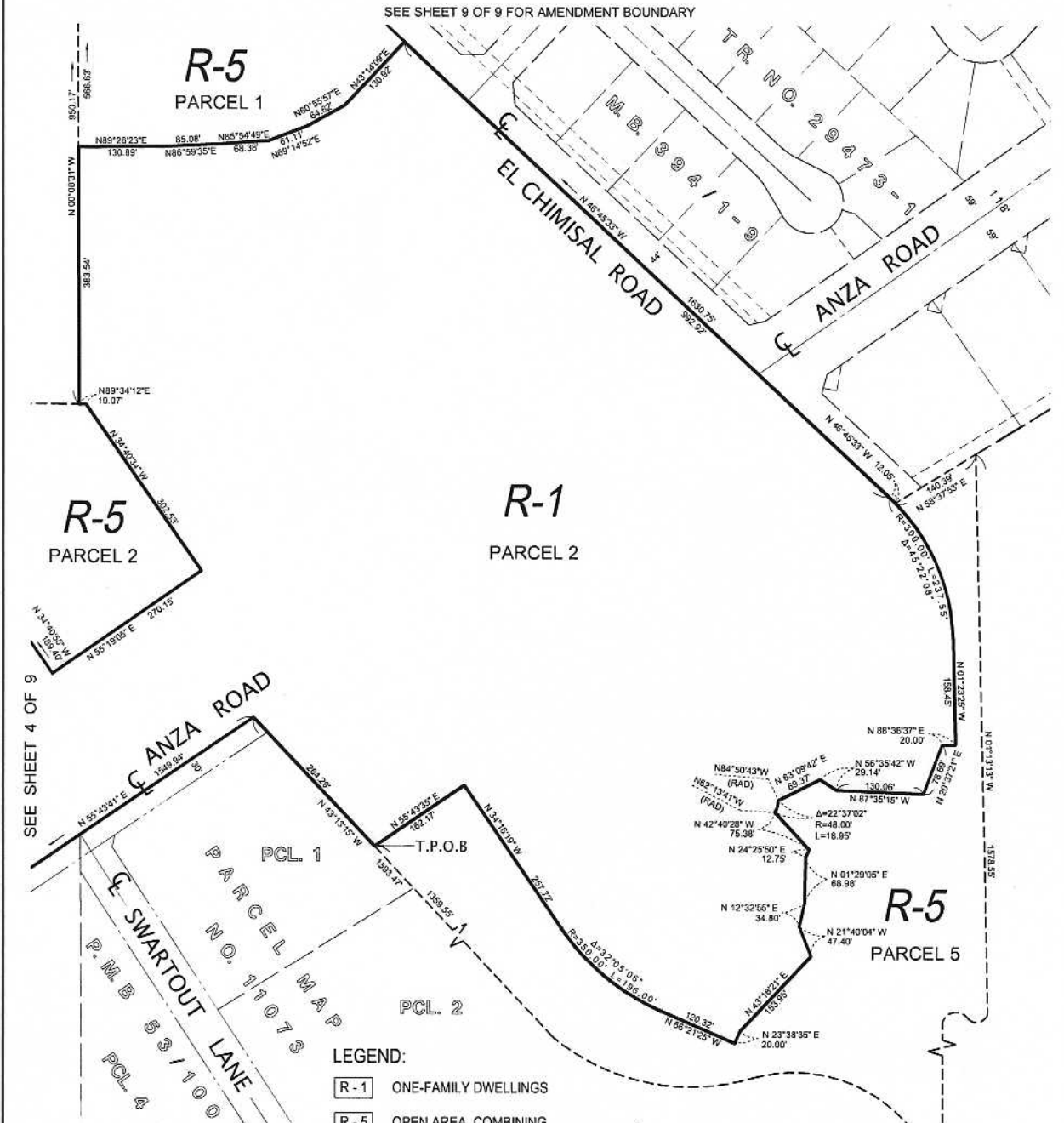
MAP NO. 2 ORDINANCE NO. 348

CHANGE OF ZONE CASE NO. 07113
ADOPTED BY ORDINANCE NO. 348.4475

DATE: MARCH 13, 2007

RIVERSIDE COUNTY BOARD OF SUPERVISORS

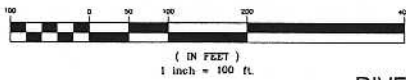




A.P.N. NO'S
917-260-044,
917-260-045,
917-260-047,
917-260-048,
917-260-054,
917-260-055,
917-260-065,
917-260-066,
917-260-067,
917-260-068,
917-260-086



GRAPHIC SCALE



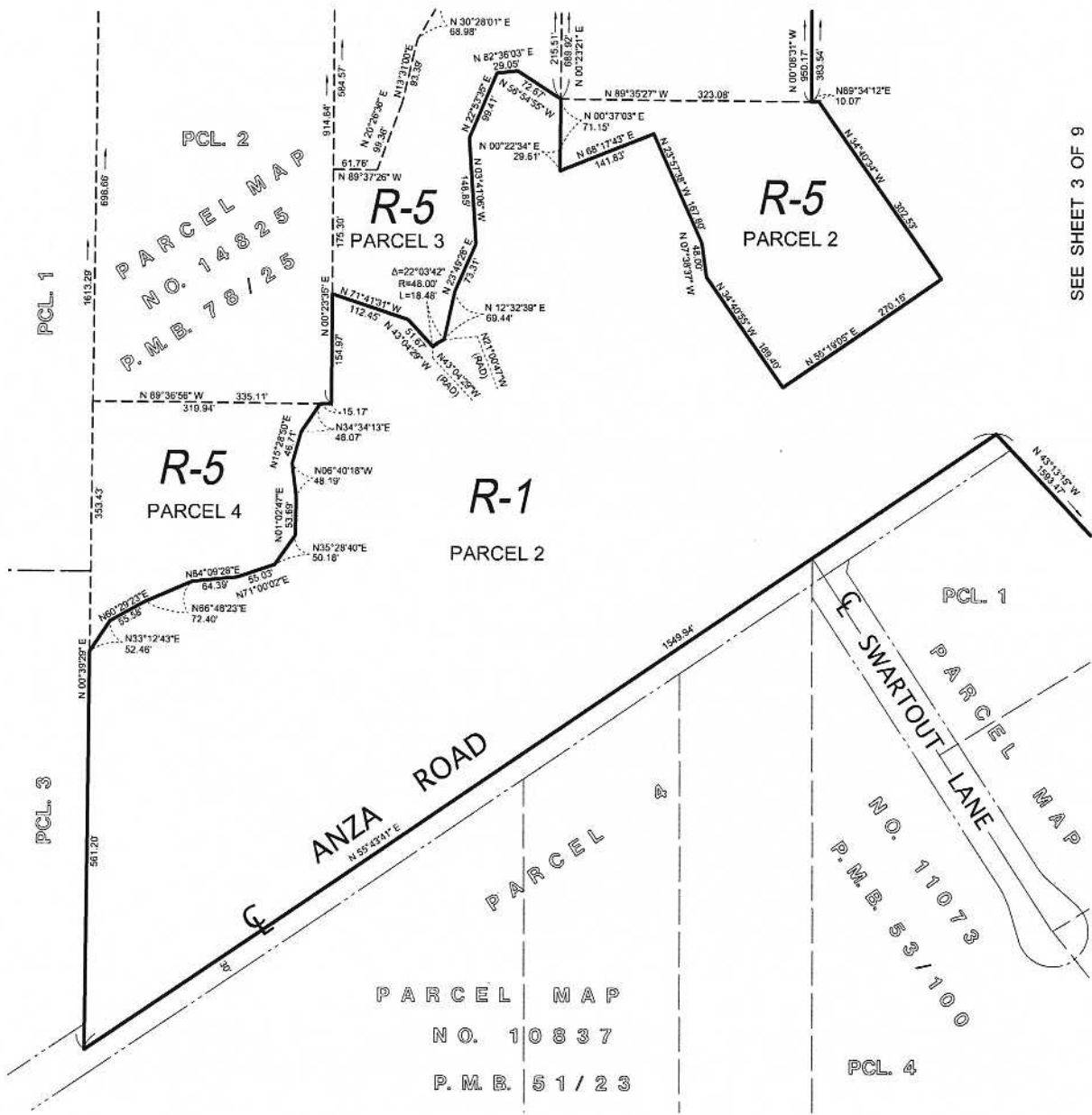
MAP NO. 2.2217

**CHANGE OF OFFICIAL ZONING PLAN
AMENDING
MAP NO. 2 ORDINANCE NO. 348**

CHANGE OF ZONE CASE NO. 07113
ADOPTED BY ORDINANCE NO. 348.4475
DATE: MARCH 13, 2007

P.O.C.
S22 S23
S27 S28
T. 8 S., R. 2 W.
S. B. M.

SEE SHEET 9 OF 9 FOR AMENDMENT BOUNDARY



SEE SHEET 3 OF 9

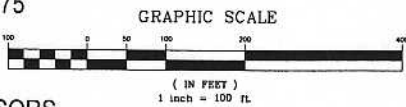
- LEGEND:
- R-1 ONE-FAMILY DWELLINGS
 - R-5 OPEN AREA COMBINING ZONE RESIDENTIAL DEVELOPMENTS

MAP NO. 2.2217

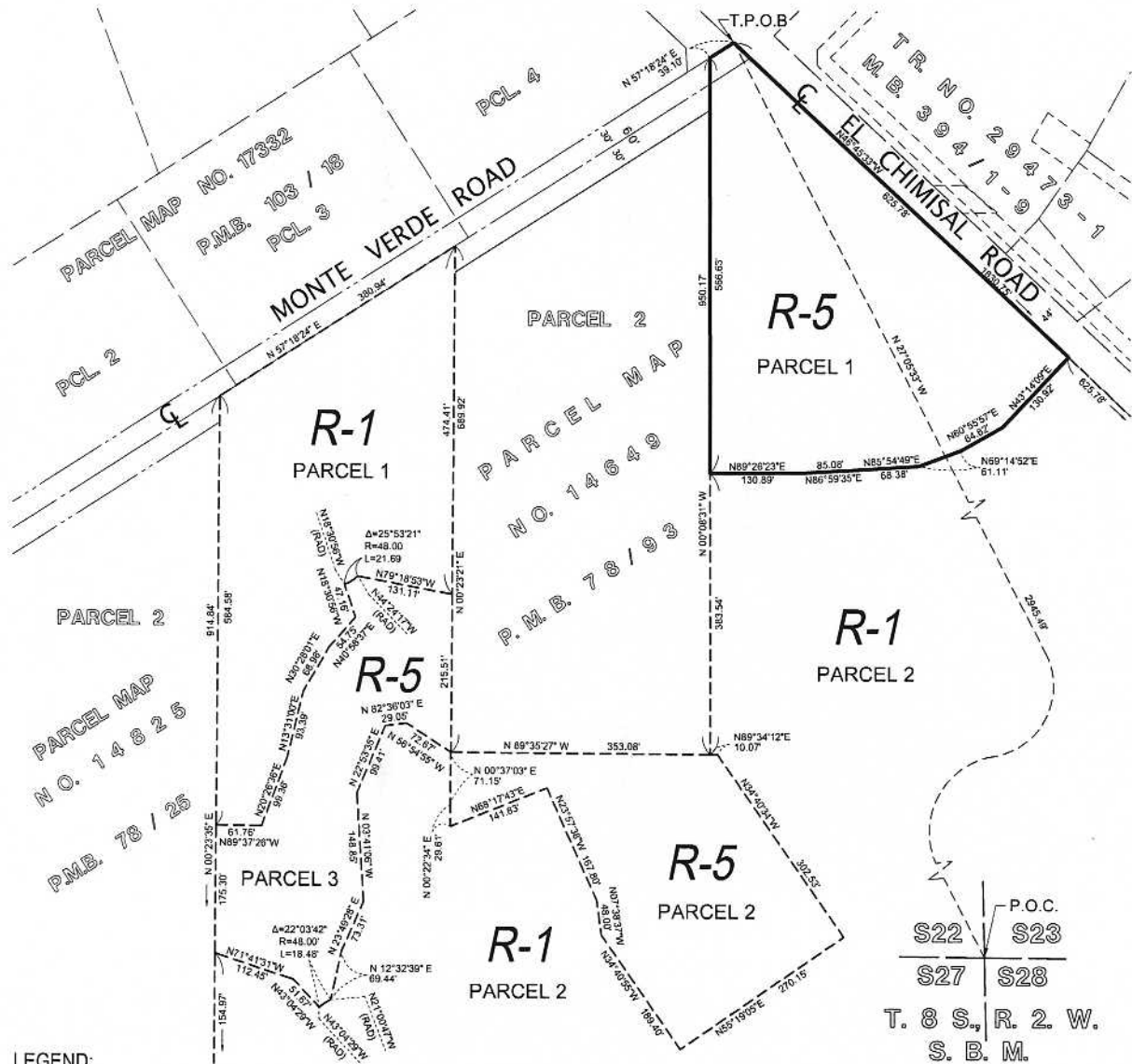
CHANGE OF OFFICIAL ZONING PLAN
AMENDING
MAP NO. 2 ORDINANCE NO. 348

CHANGE OF ZONE CASE NO. 07113
ADOPTED BY ORDINANCE NO. 348.4475
DATE: MARCH 13, 2007

- A.P.N. NO'S
- 917-260-044,
 - 917-260-045,
 - 917-260-047,
 - 917-260-048,
 - 917-260-054,
 - 917-260-055,
 - 917-260-065,
 - 917-260-066,
 - 917-260-067,
 - 917-260-068,
 - 917-260-086



SEE SHEET 9 OF 9 FOR AMENDMENT BOUNDARY



LEGEND:

- R-1 ONE-FAMILY DWELLINGS
- R-5 OPEN AREA COMBINING ZONE RESIDENTIAL DEVELOPMENTS

MAP NO. 2.2217

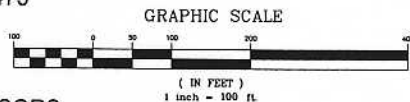
CHANGE OF OFFICIAL ZONING PLAN
AMENDING
MAP NO. 2 ORDINANCE NO. 348

CHANGE OF ZONE CASE NO. 07113
ADOPTED BY ORDINANCE NO. 348.4475
DATE: MARCH 13, 2007

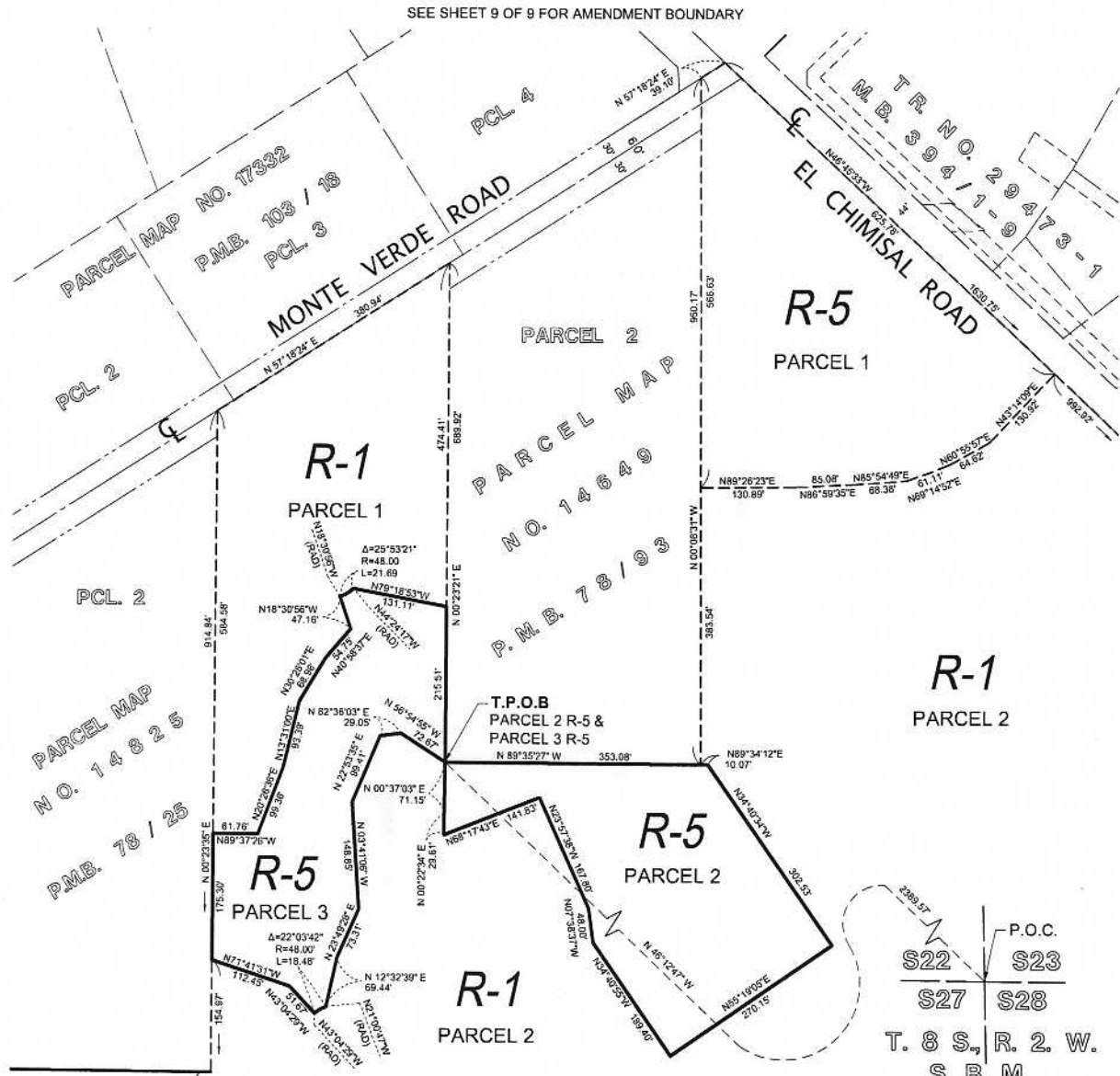
- A.P.N. NO'S
- 917-260-044,
 - 917-260-045,
 - 917-260-047,
 - 917-260-048,
 - 917-260-054,
 - 917-260-055,
 - 917-260-065,
 - 917-260-066,
 - 917-260-067,
 - 917-260-068,
 - 917-260-086

RIVERSIDE COUNTY BOARD OF SUPERVISORS

P.O.C.
S22 | S23
S27 | S28
T. 8 S., R. 2 W.
S. B. M.



RANCHO CALIFORNIA AREA
SECTION 22, T. 8 S., R. 2 W., S.B.M.



LEGEND:

- R-1 ONE-FAMILY DWELLINGS
- R-5 OPEN AREA COMBINING ZONE RESIDENTIAL DEVELOPMENTS

MAP NO. 2.2217

CHANGE OF OFFICIAL ZONING PLAN
AMENDING
MAP NO. 2 ORDINANCE NO. 348

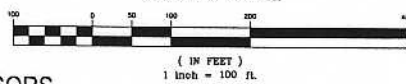
CHANGE OF ZONE CASE NO. 07113
ADOPTED BY ORDINANCE NO. 348.4475
DATE: MARCH 13, 2007

- A.P.N. NO'S
- 917-260-044,
 - 917-260-045,
 - 917-260-047,
 - 917-260-048,
 - 917-260-054,
 - 917-260-055,
 - 917-260-065,
 - 917-260-066,
 - 917-260-067,
 - 917-260-068,
 - 917-260-086

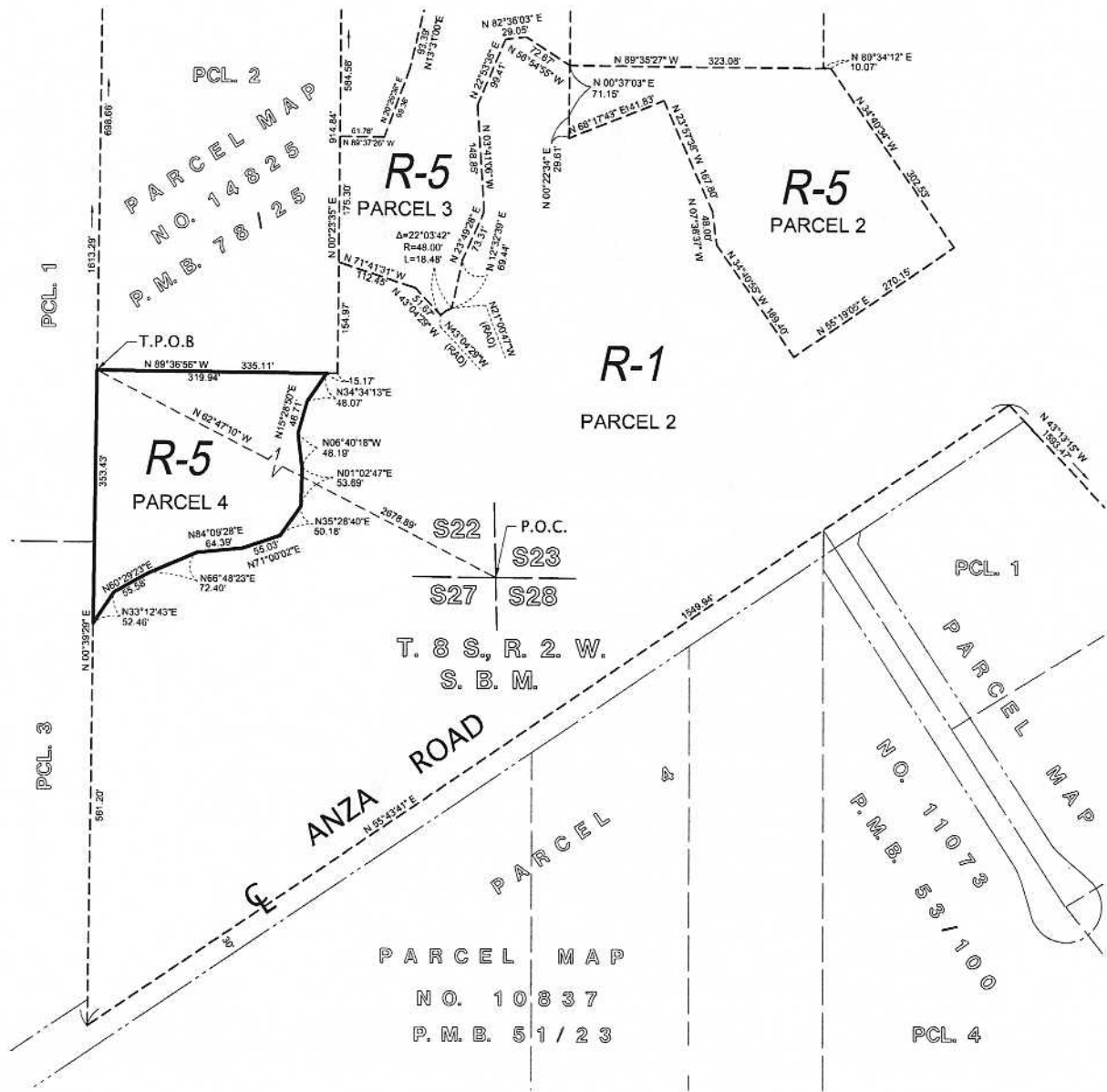
RIVERSIDE COUNTY BOARD OF SUPERVISORS



GRAPHIC SCALE



SEE SHEET 9 OF 9 FOR AMENDMENT BOUNDARY



LEGEND:

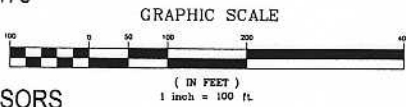
- R-1 ONE-FAMILY DWELLINGS
- R-5 OPEN AREA COMBINING ZONE RESIDENTIAL DEVELOPMENTS

MAP NO. 2.2217

CHANGE OF OFFICIAL ZONING PLAN
AMENDING
MAP NO. 2 ORDINANCE NO. 348

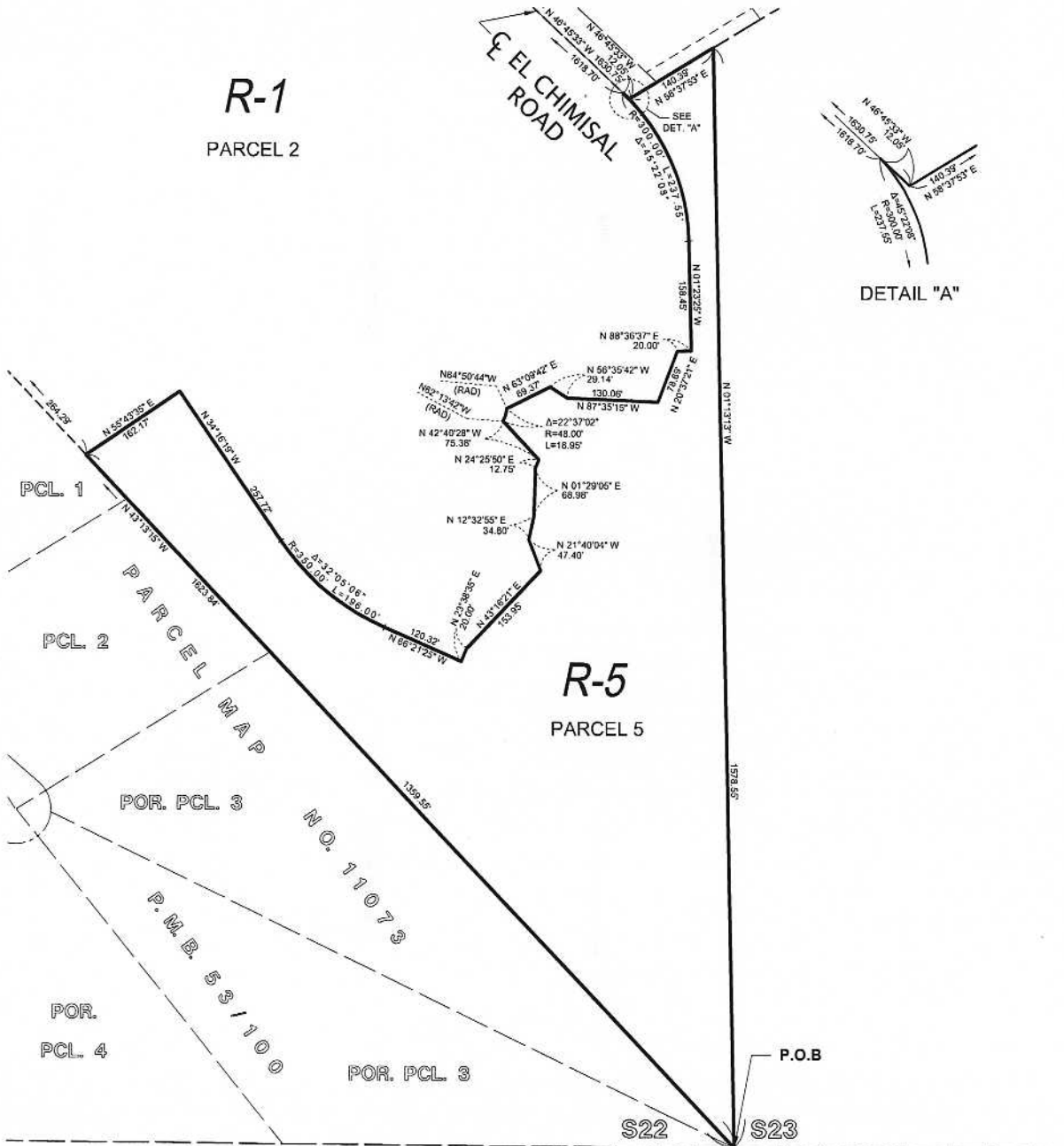
CHANGE OF ZONE CASE NO. 07113
ADOPTED BY ORDINANCE NO. 348.4475
DATE: MARCH 13, 2007

- A.P.N. NO'S
917-260-044,
917-260-045,
917-260-047,
917-260-048,
917-260-054,
917-260-055,
917-260-065,
917-260-066,
917-260-067,
917-260-068,
917-260-086



RANCHO CALIFORNIA AREA
SECTION 22, T. 8 S., R. 2 W., S.B.M.

SEE SHEET 9 OF 9 FOR AMENDMENT BOUNDARY

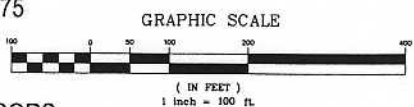


DETAIL "A"

- LEGEND:
- R-1 ONE-FAMILY DWELLINGS
 - R-5 OPEN AREA COMBINING ZONE RESIDENTIAL DEVELOPMENTS

- A.P.N. NO'S
- 917-260-044,
 - 917-260-045,
 - 917-260-047,
 - 917-260-048,
 - 917-260-054,
 - 917-260-055,
 - 917-260-065,
 - 917-260-066,
 - 917-260-067,
 - 917-260-068,
 - 917-260-086

MAP NO. 2.2217
**CHANGE OF OFFICIAL ZONING PLAN
 AMENDING
 MAP NO. 2 ORDINANCE NO. 348**
 CHANGE OF ZONE CASE NO. 07113
 ADOPTED BY ORDINANCE NO. 348.4475
 DATE: MARCH 13, 2007





LEGEND:

- R-1 ONE-FAMILY DWELLINGS
- R-5 OPEN AREA COMBINING
ZONE RESIDENTIAL DEVELOPMENTS

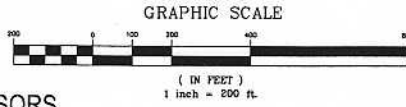
T. 8 S., R. 2 W.
S. B. M.

MAP NO. 2.2217

CHANGE OF OFFICIAL ZONING PLAN
AMENDING
MAP NO. 2 ORDINANCE NO. 348

CHANGE OF ZONE CASE NO. 07113
ADOPTED BY ORDINANCE NO. 348.4475
DATE: MARCH 13, 2007

A.P.N. NO'S
917-260-044,
917-260-045,
917-260-047,
917-260-048,
917-260-054,
917-260-055,
917-260-065,
917-260-066,
917-260-067,
917-260-068,
917-260-086



RIVERSIDE COUNTY BOARD OF SUPERVISORS