

SUBMITTAL TO THE BOARD OF SUPERVISORS  
COUNTY OF RIVERSIDE, STATE OF CALIFORNIA

220A

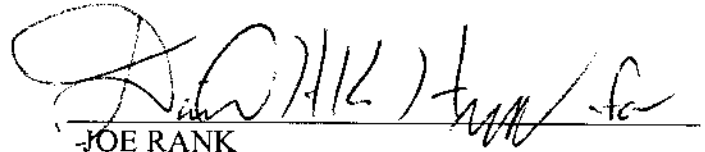


FROM: County Counsel  
SUBJECT: Ordinance No. 348.4482

SUBMITTAL DATE: April 3, 2007

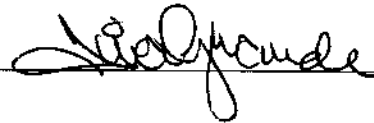
**RECOMMENDED MOTION:** That the Board of Supervisors adopt Ordinance No. 348.4482 amending the zoning in the Rancho California Area shown on Map No. 2.2221 Change of Zone Case No. 7389.

**BACKGROUND:** Change of Zone Case No. 7389 was approved by the Board of Supervisors on March 13, 2007.

  
\_\_\_\_\_  
JOE RANK  
County Counsel

C.E.O. RECOMMENDATION: **APPROVE**

County Executive Office Signature



Policy

Policy

Consent

Consent

Department Recommendation:  
Per Executive Office:

Prev. Agn. ref.

Dist. THIRD

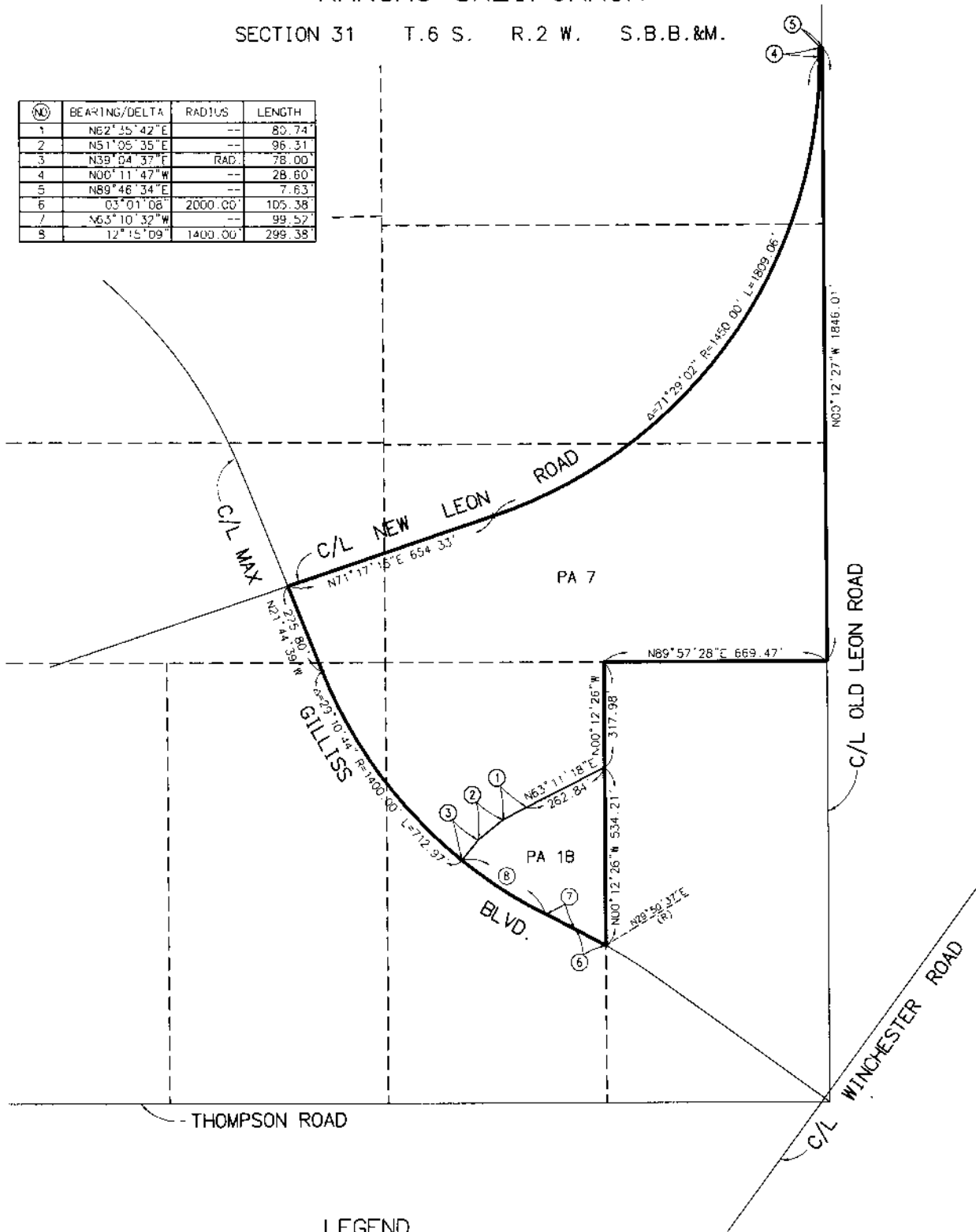
AGENDA NO.



# RANCHO CALIFORNIA

SECTION 31 T.6 S. R.2 W. S.B.B.&M.

(N)	BEARING/DELTA	RADIUS	LENGTH
1	N62°35'42"E	--	80.74'
2	N51°05'35"E	--	96.31'
3	N39°04'37"E	RAD.	78.00'
4	N00°11'47"W	--	28.60'
5	N89°46'34"E	--	7.63'
6	S03°01'08"W	2000.00'	105.38'
7	S65°10'32"W	--	99.52'
8	S12°15'09"W	1400.00'	299.38'



## LEGEND

SP ZONE SPECIFIC PLAN (SP 312)

MAP NO. 2, 2221

CHANGE OF OFFICIAL ZONING PLAN  
AMENDING  
MAP NO. 2, ORDINANCE NO. 348

CHANGE OF ZONE CASE NO. 07389  
AMENDING ORDINANCE NO. 348.  
ADOPTED BY ORDINANCE NO. 348.4482  
APRIL 17, 2007

RIVERSIDE COUNTY BOARD OF SUPERVISORS