

SUBMITTAL TO THE BOARD OF SUPERVISORS
COUNTY OF RIVERSIDE, STATE OF CALIFORNIA

221A



FROM: County Counsel
SUBJECT: Ordinance No. 348.4483

SUBMITTAL DATE: April 3, 2007

RECOMMENDED MOTION: That the Board of Supervisors adopt Ordinance No. 348.4483 amending the zoning in the Rancho California Area shown on Map No. 2.2222 Change of Zone Case No. 7396.

BACKGROUND: Change of Zone Case No. 7396 was approved by the Board of Supervisors on March 13, 2007.

[Handwritten Signature]

JOE RANK
County Counsel

C.E.O. RECOMMENDATION:

APPROVE

County Executive Office Signature

[Handwritten Signature]

- Policy
 - Policy
 - Consent
 - Consent
- Department Recommendation:
Per Executive Office:

Prev. Agn. ref.

Dist. THIRD

AGENDA NO.

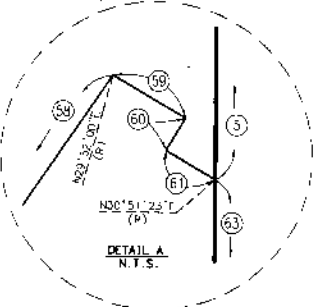
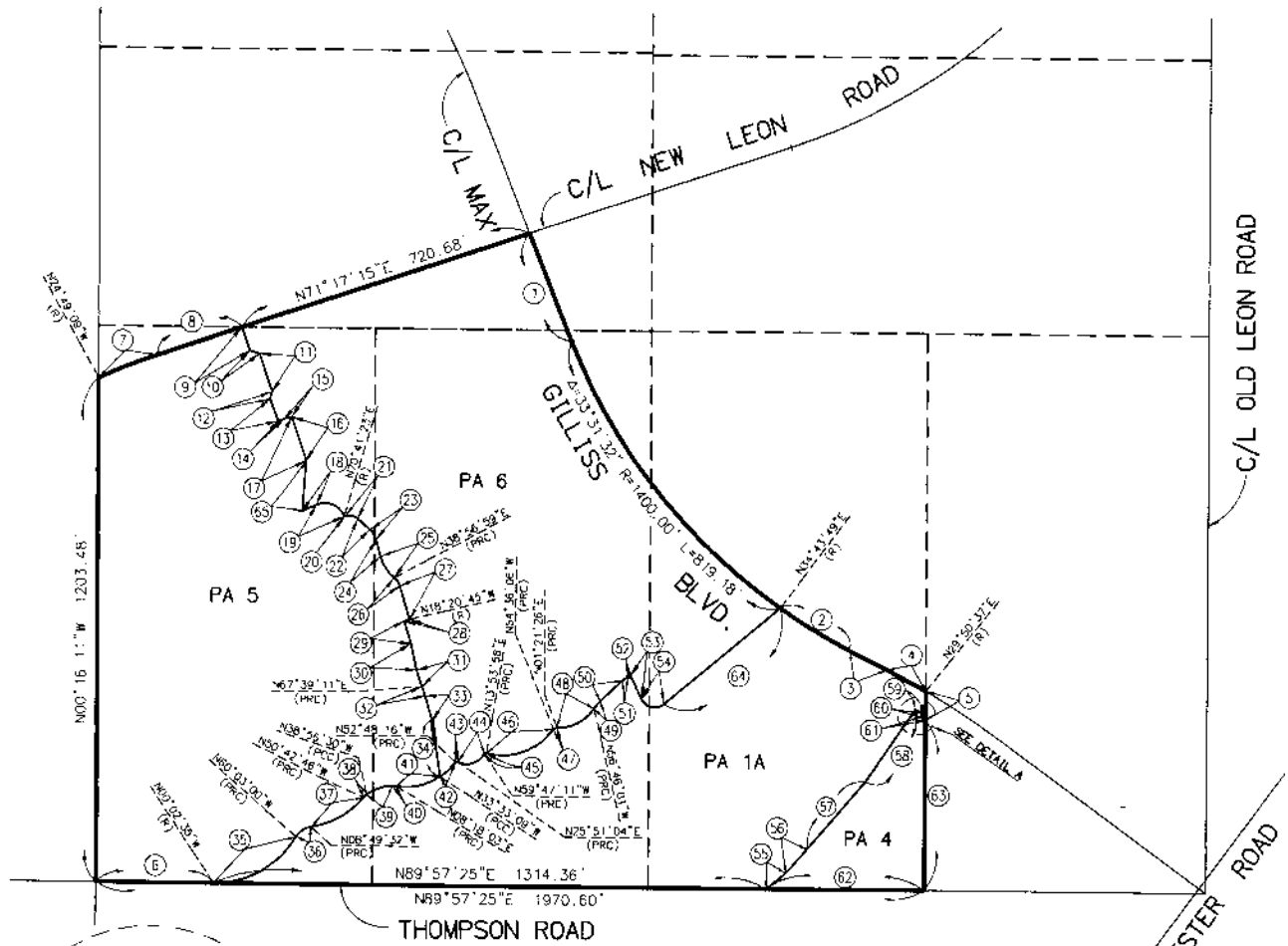
RANCHO CALIFORNIA

SECTION 31 T.6 S. R.2 W. S.B.B.&M.

DATA TABLE			
(NO)	BEARING/DELTA	RADIUS	LENGTH
1	N21°44'39"W	--	275.80'
2	07°54'20"	1400.00'	193.18'
3	N63°10'32"W	--	99.52'
4	03°01'09"	2000.00'	105.39'
5	N00°12'26"W	--	68.51'
6	N89°57'25"E	--	279.65'
7	06°06'24"	1400.00'	149.21'
8	N71°17'15"E	--	712.31'
9	N18°42'45"W	--	59.00'
10	N73°43'14"W	--	24.41'
11	N18°42'45"W	--	95.21'
12	N13°57'52"E	--	17.81'
13	N20°10'15"W	(R)	56.00'
14	01°27'30"	572.00'	14.56'
15	N71°17'15"E	--	18.86'
16	N18°42'45"W	--	110.81'
17	N03°45'47"E	--	121.85'
18	N64°07'55"E	--	37.62'
19	96°53'78"	48.00'	60.89'
20	N70°41'23"E	--	2.44'
21	60°40'35"	30.00'	31.77'
22	N48°38'02"W	--	38.92'

DATA TABLE			
(NO)	BEARING/DELTA	RADIUS	LENGTH
23	S2°52'32"	50.00'	28.89'
24	N15°45'29"W	--	41.19'
25	S5°17'32"	100.00'	61.60'
26	S5°58'32"	40.00'	23.72'
27	N17°04'29"W	--	83.06'
28	01°09'42"	672.00'	13.62'
29	N17°11'03"W	(R)	56.00'
30	N12°51'40"W	--	63.81'
31	08°29'09"	250.00'	41.39'
32	05°23'08"	250.00'	23.50'
33	N16°57'41"W	--	61.70'
34	N08°29'19"W	--	134.29'
35	60°00'25"	225.00'	255.65'
36	S1°15'28"	50.00'	44.70'
37	41°53'14"	200.00'	146.21'
38	11°46'17"	50.00'	10.27'
39	S8°13'34"	100.00'	66.72'
40	09°00'59"	50.00'	7.87'
41	47°51'11"	150.00'	109.57'
42	19°15'08"	150.00'	50.40'
43	76°39'20"	5.00'	6.86'
44	85°38'16"	48.00'	71.74'

DATA TABLE			
(NO)	BEARING/DELTA	RADIUS	LENGTH
45	73°41'09"	5.00'	6.43'
46	68°30'04"	150.00'	179.34'
47	S5°57'32"	10.00'	9.77'
48	S8°07'27"	102.50'	103.98'
49	12°59'28"	100.00'	22.67'
50	N46°13'26"E	--	72.73'
51	18°08'36"	50.00'	15.83'
52	N64°22'07"E	--	7.02'
53	N25°37'58"W	--	62.26'
54	104°22'43"	34.00'	61.94'
55	N51°11'19"E	--	60.52'
56	N41°11'09"E	--	76.07'
57	N40°09'22"E	--	214.02'
58	N33°46'21"W	--	207.61'
59	00°35'17"	1950.00'	20.01'
60	N30°27'17"E	(R)	9.00'
61	00°24'06"	1941.00'	13.61'
62	N89°57'25"E	--	376.59'
63	N00°12'26"W	--	406.30'
64	N49°59'19"E	--	358.73'
65	N03°45'47"E	--	121.85'



LEGEND

SP_ZONE SPECIFIC PLAN (SP 312)

MAP NO. 2.2222

CHANGE OF OFFICIAL ZONING PLAN
AMENDING
MAP NO. 2, ORDINANCE NO. 348

CHANGE OF ZONE CASE NO. 07396
AMENDING ORDINANCE NO. 348.
ADOPTED BY ORDINANCE NO. 348.4483
APRIL 17, 2007

RIVERSIDE COUNTY BOARD OF SUPERVISORS

