

SUBMITTAL TO THE BOARD OF SUPERVISORS
COUNTY OF RIVERSIDE, STATE OF CALIFORNIA

336A



FROM: County Counsel
SUBJECT: Ordinance No. 348.4489

SUBMITTAL DATE: April 12, 2007

RECOMMENDED MOTION: That the Board of Supervisors adopt Ordinance No. 348.4489 amending the zoning in the Prado-Mira Loma District shown on Map No. 38.130 Change of Zone Case No. 7432.

BACKGROUND: Change of Zone Case No. 7432 was approved by the Board of Supervisors on April 10, 2007.

Joe Rank

JOE RANK
County Counsel

C.E.O. RECOMMENDATION: **APPROVE**

Policy
 Policy

Consent
 Consent

County Executive Office Signature

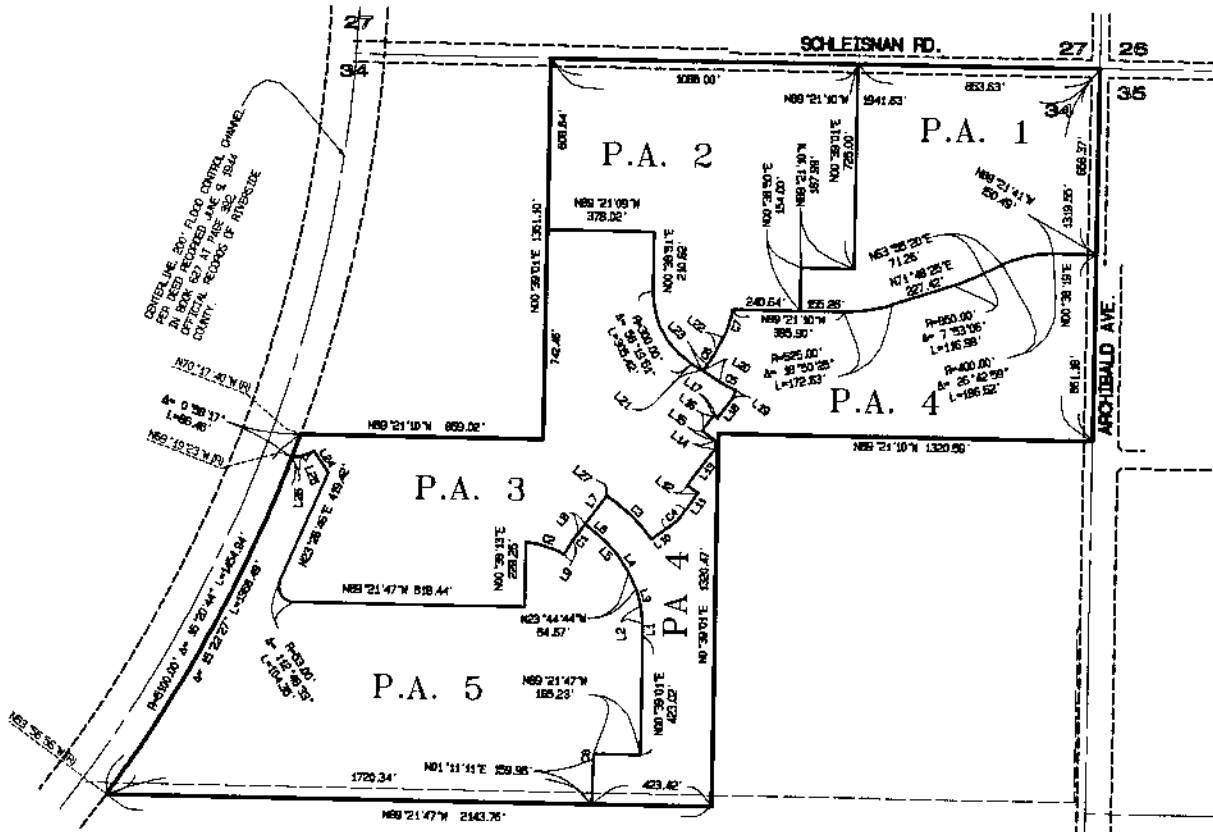
[Signature]

Department Recommendation:
Per Executive Office:

Prev. Agn. ref.

Dist. SECOND

AGENDA NO.



CURVE DATA

CURVE	ANGLE	DELTA	LENGTH
C1	300.00	5° 49' 08"	30.31'
C2	832.00	26° 37' 02"	144.84'
C3	286.00	22° 31' 47"	238.83'
C4	300.00	18° 53' 58"	104.25'
C5	300.00	11° 38' 58"	62.82'
C6	300.00	9° 44' 37"	54.02'
C7	300.00	18° 57' 35"	104.81'
C8	300.00	3° 27' 09"	36.47'

LINE DATA

LINE	BEARING	DISTANCE
L1	N00°02'28"W	41.08'
L2	N06°42'31"W	82.87'
L3	N36°08'47"W	84.00'
L4	N52°28'34"W	85.84'
L5	S41°18'44"E	85.75'
L6	N00°27'41"W	89.25'
L7	N36°58'38"E	125.30'
L8	N36°58'38"E	42.88'
L9	N31°11'32"E	58.62'
L10	N33°11'37"E	58.88'
L11	N05°18'58"E	70.70'
L12	N00°03'23"W	46.60'
L13	N36°58'38"E	262.38'
L14	N00°38'01"E	281.34'
L15	N33°03'22"W	58.24'
L16	N36°58'38"E	69.30'
L17	N33°03'22"W	36.40'
L18	N36°58'38"E	83.81'
L19	N00°03'24"E	281.11'
L20	N37°41'06"W	71.82'
L21	N37°41'06"W	45.83'
L22	N37°42'01"E	58.17'
L23	N36°58'38"E	32.31'
L24	N30°04'51"W	88.81'
L25	N72°03'45"E	48.00'
L26	N31°04'19"E	32.88'
L27	N37°20'11"W	2.68'

LEGEND

SP ZONE SPECIFIC PLAN (SP 331)

MAP NO. 38.130

CHANGE OF OFFICIAL ZONING PLAN
PRADO - MIRA LOMA DISTRICT

CHANGE OF ZONE CASE NO. 07432
AMENDING ORDINANCE NO. 348
ADOPTED BY ORDINANCE NO. 348.4489
APRIL 24, 2007

RIVERSIDE COUNTY BOARD OF SUPERVISORS



SCALE IN FEET
0 300