

428A
SUBMITTAL TO THE BOARD OF SUPERVISORS
COUNTY OF RIVERSIDE, STATE OF CALIFORNIA

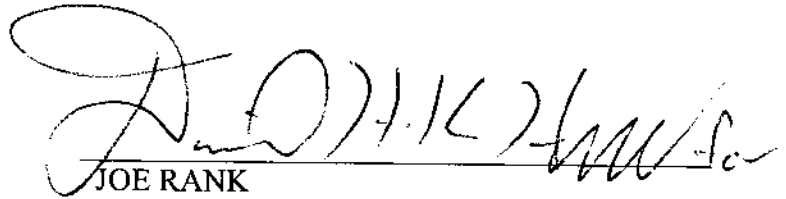


FROM: County Counsel
SUBJECT: Ordinance No. 348.4490

SUBMITTAL DATE: April 18, 2007

RECOMMENDED MOTION: That the Board of Supervisors adopt Ordinance No. 348.4490 amending the zoning in the Rancho California Area shown on Map No. 2.2225 Change of Zone Case No. 7275.

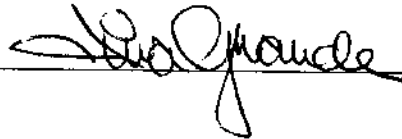
BACKGROUND: Change of Zone Case No. 7275 was approved by the Board of Supervisors on April 3, 2007.


JOE RANK
County Counsel

C.E.O. RECOMMENDATION:

APPROVE

County Executive Office Signature



Policy
 Policy

Consent
 Consent

Department Recommendation:
Per Executive Office:

Prev. Agn. ref.

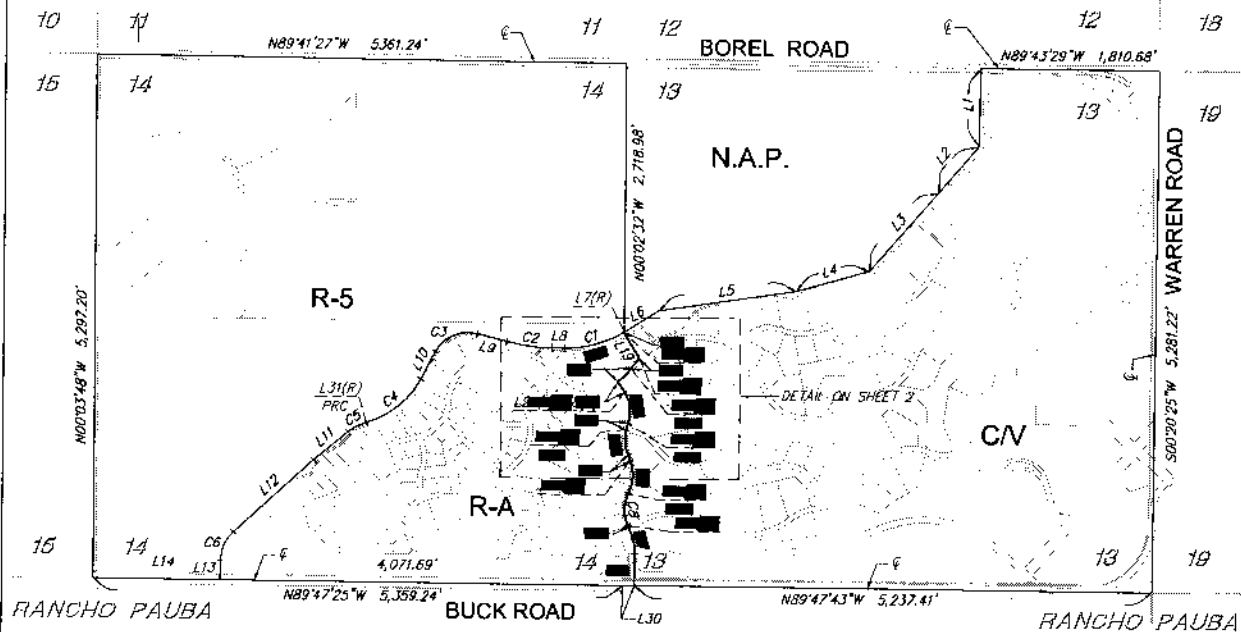
Dist. THIRD

AGENDA NO.

RANCHO CALIFORNIA ZONING AREA

PORTIONS OF SECTIONS 13 AND 14, T.7S., R.2W., S.B.M.

SHEET 1 OF 2



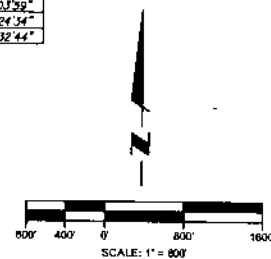
LINE	LENGTH	BEARING
L1	790.21	N00°47'34"E
L2	618.15	N40°51'26"E
L3	1080.51	N40°30'01"E
L4	772.39	N74°19'55"E
L5	1400.79	N81°30'00"E
L6	411.51	N57°47'19"E
L7	1100.00	N32°12'41"W
L8	127.50	N89°15'21"W
L9	308.68	N29°54'32"W
L10	313.60	N27°46'02"E
L11	451.03	N50°17'02"E
L12	1088.59	N47°26'55"E
L13	193.61	N00°12'35"E
L14	1287.55	N89°47'25"W
L15	320.46	N00°17'15"E
L16	30.19	N26°09'13"W
L17	60.31	N22°01'36"W
L18	126.56	N33°09'12"W
L19	310.54	N31°02'25"W

LINE	LENGTH	BEARING
L21	1100.00	N31°48'02"W
L22	750.00	N45°49'55"W
L23	-----	N55°53'54"W
L24	351.24	N56°44'43"E
L25	-----	N69°50'11"W
L26	-----	N78°31'19"W
L27	400.00	N67°58'21"E
L28	-----	N67°23'22"W
L29	350.00	N63°50'46"E
L30	120.76	N89°47'43"W
L31	-----	N15°54'27"W

CURVE	LENGTH	RADIUS	DELTA
C1	632.69	1100.00'	32°57'18"
C2	465.92	2000.00'	13°20'51"
C3	489.54	375.00'	76°29'26"
C4	727.68	900.00'	46°19'31"
C5	208.35	500.00'	23°52'31"
C6	129.26	400.00'	47°14'20"
C7	276.02	600.00'	26°21'28"
C8	328.63	350.00'	53°45'52"
C9	346.54	400.00'	49°19'17"
C10	281.59	447.34'	33°10'17"
C11	62.81	480.52'	8°41'08"
C12	327.47	351.24'	53°23'06"
C13	188.56	475.00'	22°44'42"
C14	131.72	750.00'	10°11'59"
C15	7.86	1100.00'	00°24'34"
C16	624.83	1100.00'	32°32'44"

LEGEND

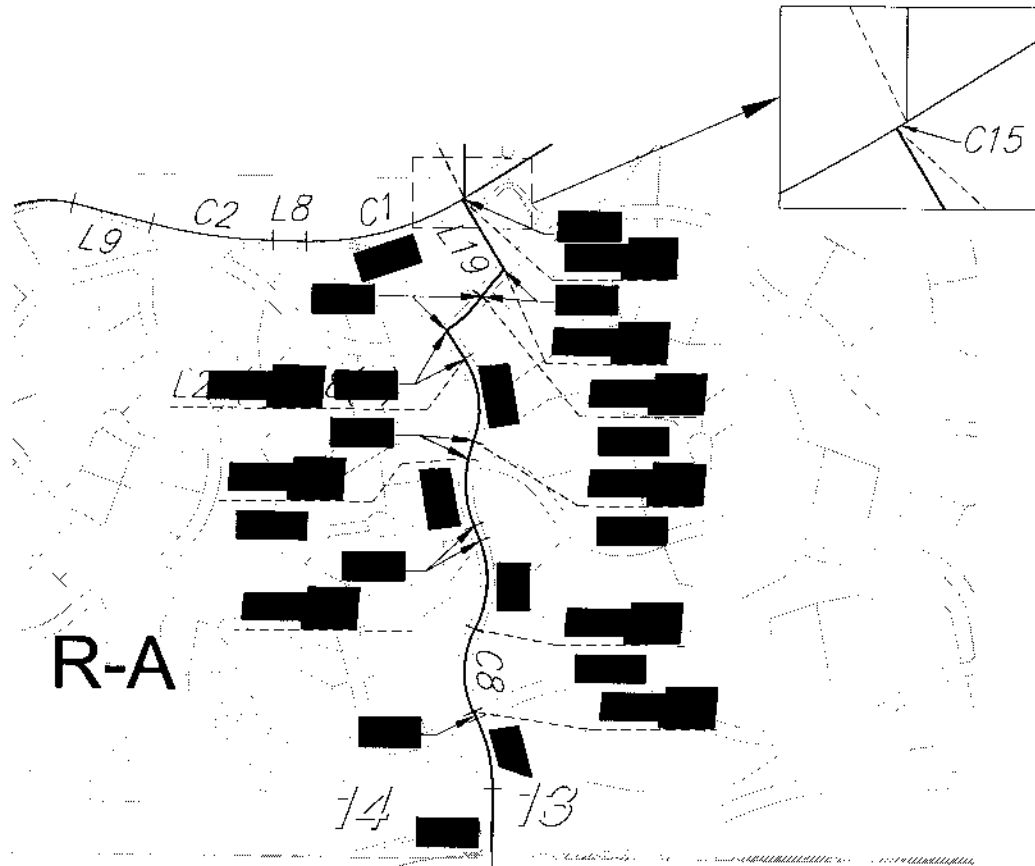
- R-A RESIDENTIAL AGRICULTURE
- C/V CITRUS VINEYARD
- R-5 OPEN AREA COMBINING ZONE - RESIDENTIAL DEVELOPMENTS



MAP NO. 2.2225
CHANGE OF OFFICIAL ZONING PLAN
AMENDING
MAP NO. 2, ORDINANCE NO. 348
 CHANGE OF ZONE CASE NO. 7275
 ADOPTED BY ORDINANCE NO. 348.4490
 MAY 1, 2007
 RIVERSIDE COUNTY BOARD OF SUPERVISORS

RANCHO CALIFORNIA ZONING AREA
 PORTIONS OF SECTIONS 13 AND 14, T.7S., R.2W., S.B.M.

SHEET 2 OF 2



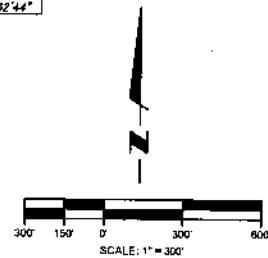
LINE	LENGTH	BEARING
L1	290.71	N00°47'34"E
L2	618.15	N40°51'26"E
L3	1060.53	N42°30'01"E
L4	772.39	N74°09'59"E
L5	1400.78	N81°30'00"E
L6	411.51	N52°47'19"E
L7	1100.00	N32°12'41"W
L8	127.50	N89°15'21"W
L9	308.68	N75°54'32"W
L10	313.60	N27°46'02"E
L11	481.03	N50°13'02"E
L12	1089.58	N47°26'55"E
L13	183.61	N00°12'39"E
L14	1287.55	N89°47'25"W
L15	320.46	N00°12'15"E
L16	301.19	N26°09'13"W
L17	60.51	N22°01'36"W
L18	176.50	N33°09'12"W
L19	310.54	N37°02'25"W

LINE	LENGTH	BEARING
L21	1100.00	N31°48'07"W
L22	750.00	N45°48'59"W
L23	-----	N55°31'54"W
L24	351.24	N56°44'43"E
L25	-----	N69°50'11"W
L26	-----	N78°31'19"W
L27	400.00	N67°58'21"E
L28	-----	N62°23'22"W
L29	350.00	N63°50'46"E
L30	120.78	N89°47'43"W
L31	-----	N155°42'27"W

CURVE	LENGTH	RADIUS	DELTA
C1	532.69	1100.00'	32°57'18"
C2	468.84	2000.00'	13°20'51"
C3	498.84	375.00'	76°19'26"
C4	727.68	900.00'	46°19'31"
C5	208.35	500.00'	23°52'31"
C6	329.79	400.00'	47°14'20"
C7	276.02	600.00'	26°21'28"
C8	328.43	350.00'	53°45'52"
C9	348.54	400.00'	49°38'17"
C10	261.59	447.34'	33°30'17"
C11	89.81	460.52'	8°41'08"
C12	327.47	351.24'	53°25'06"
C13	188.56	475.00'	22°44'42"
C14	131.77	750.00'	10°03'59"
C15	7.06	1100.00'	00°24'34"
C16	624.83	1100.00'	32°32'44"

LEGEND

- R-A RESIDENTIAL AGRICULTURE
- C/V CITRUS VINEYARD
- R-5 OPEN AREA COMBINING ZONE - RESIDENTIAL DEVELOPMENTS



MAP NO. 2.2225
CHANGE OF OFFICIAL ZONING PLAN
AMENDING
MAP NO. 2, ORDINANCE NO. 348
 CHANGE OF ZONE CASE NO. 7275
 ADOPTED BY ORDINANCE NO. 348.4490
 MAY 1, 2007
RIVERSIDE COUNTY BOARD OF SUPERVISORS