

S39A

**SUBMITTAL TO THE BOARD OF SUPERVISORS
COUNTY OF RIVERSIDE, STATE OF CALIFORNIA**



FROM: County Counsel

SUBMITTAL DATE: April 25, 2007

SUBJECT: Ordinance No. 348.4494

RECOMMENDED MOTION: That the Board of Supervisors adopt Ordinance No. 348.4494 amending the zoning in the Sedco-Wildomar Area shown on Map No. 2.2229 Change of Zone Case No. 7008.

BACKGROUND: Change of Zone Case No. 7008 was approved by the Board of Supervisors on March 27, 2007.



JOE RANK
County Counsel

C.E.O. RECOMMENDATION: APPROVE

County Executive Office Signature



Policy
 Policy

Consent
 Consent

Department Recommendation:
Per Executive Office:

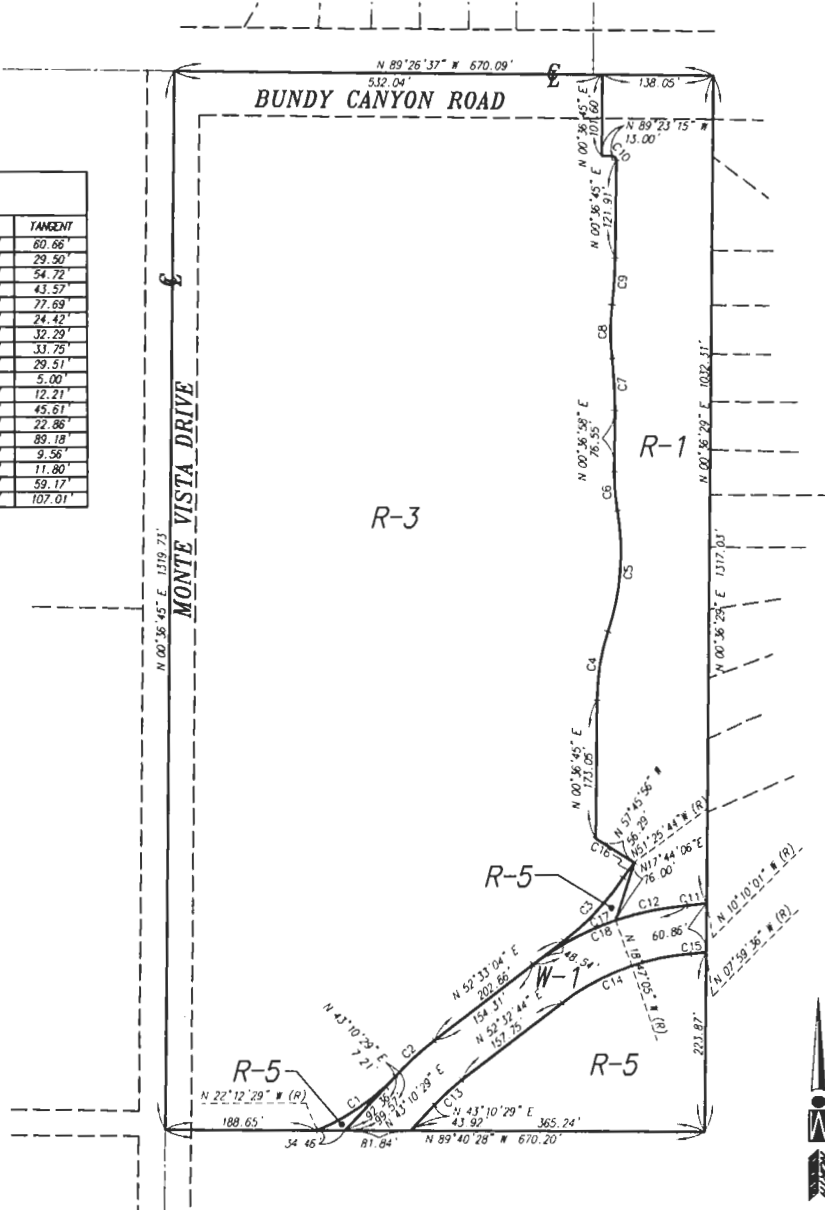
Prev. Agn. ref.

Dist. FIRST

AGENDA NO.

SEDCO-WOLDOMAR AREA
SECTION 26, TOWNSHIP 6 SOUTH, RANGE 4 WEST.

DATA TABLE				
NO.	BEARING/DELTA	LENGTH	RADIUS	TANGENT
C1	24°37'02"	119.44'	278.00'	60.66'
C2	9°22'15"	58.88'	360.00'	29.50'
C3	18°56'35"	108.44'	328.00'	54.72'
C4	17°33'52"	86.45'	282.00'	43.57'
C5	27°27'20"	152.39'	318.00'	77.69'
C6	08°53'41"	48.71'	282.00'	24.42'
C7	07°08'01"	64.49'	518.00'	32.29'
C8	13°38'03"	67.19'	282.00'	33.75'
C9	06°51'15"	58.35'	518.00'	29.51'
C10	90°00'00"	7.85'	5.00'	5.00'
C11	05°49'24"	24.39'	240.00'	12.21'
C12	14°26'20"	90.74'	360.00'	45.61'
C13	08°42'50"	45.63'	300.00'	22.86'
C14	33°06'39"	173.37'	300.00'	89.18'
C15	03°38'59"	19.11'	300.00'	9.56'
C16	04°58'07"	23.59'	272.00'	11.80'
C17	18°39'56"	117.30'	360.00'	59.17'
C18	33°06'21"	208.04'	360.00'	107.01'



LEGEND

R-1	ONE - FAMILY DWELLINGS
R-3	GENERAL RESIDENTIAL
R-5	OPEN AREA COMBINING ZONE - RESIDENTIAL DEVELOPMENTS
W-1	WATERCOURSE

MAP NO. 2.2229
CHANGE OF OFFICIAL ZONING PLAN
AMENDING
MAP NO. 2, ORDINANCE NO. 348
CHANGE OF ZONE CASE NO. 7008
ADOPTED BY ORDINANCE NO. 348.4494
MAY 8, 2007
RIVERSIDE COUNTY BOARD OF SUPERVISORS