

SUBMITTAL TO THE BOARD OF SUPERVISORS
COUNTY OF RIVERSIDE, STATE OF CALIFORNIA

648A



FROM: County Counsel

SUBMITTAL DATE: May 1, 2007

SUBJECT: Ordinance No. 348.4497

RECOMMENDED MOTION: That the Board of Supervisors adopt Ordinance No. 348.4497 amending the zoning in the Rancho California Area shown on Map No. 2.2232 Change of Zone Case No. 6926.

BACKGROUND: Change of Zone Case No. 6926 was approved by the Board of Supervisors on April 10, 2007.

Joe Rank

JOE RANK (David Huff)
County Counsel

C.E.O. RECOMMENDATION:

APPROVE

County Executive Office Signature

Tina Grande (Tina Grande)

Policy

Consent

Department Recommendation:
Per Executive Office:

Prev. Agn. ref.

Dist. THIRD

AGENDA NO.

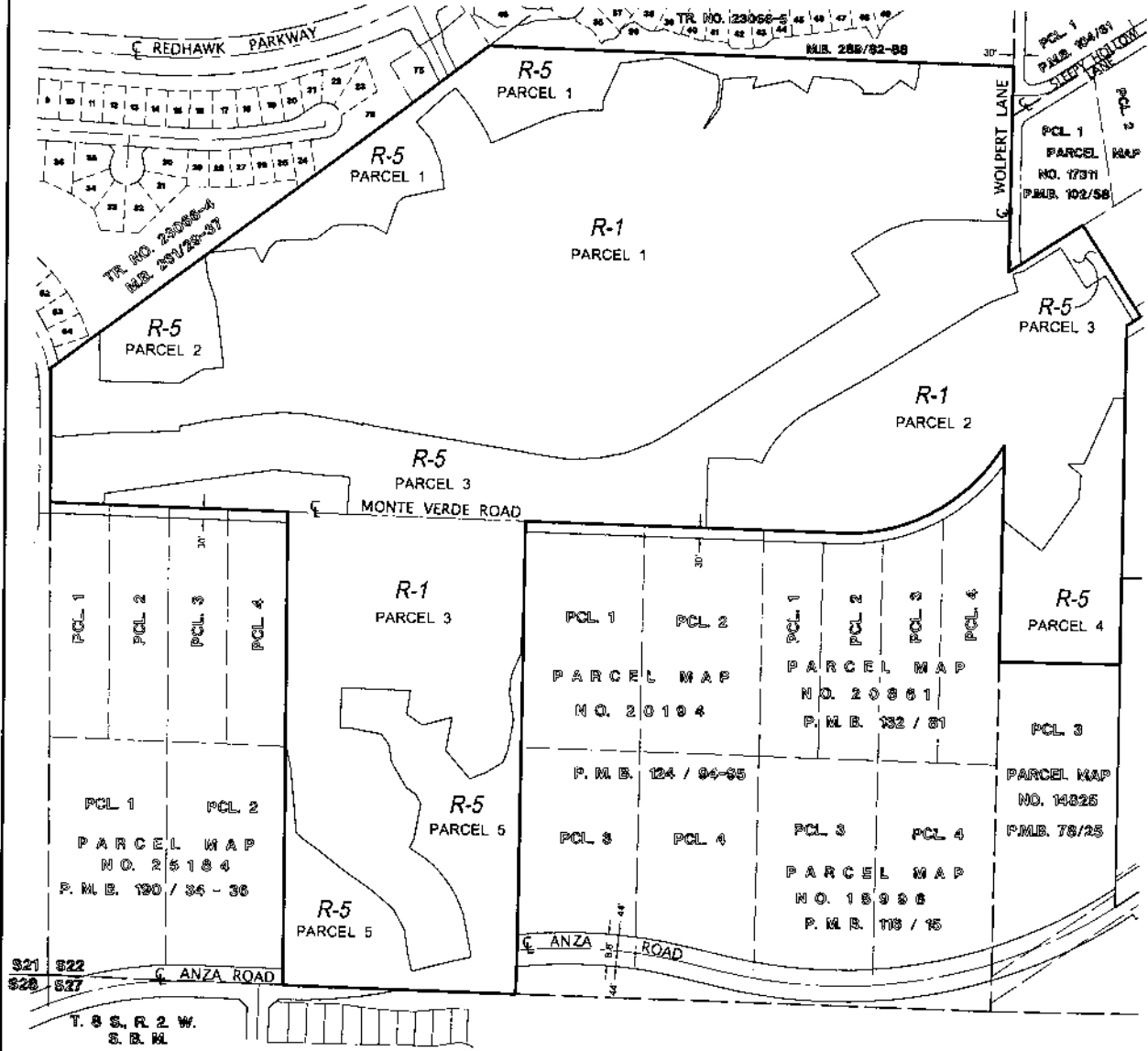
RANCHO CALIFORNIA AREA
SECTION 22, T. 8 S., R. 2 W., S.B.M.

SHEET 1 OF 10

SEE SHEET 10 OF 10 FOR AMENDMENT BOUNDARY

BASIS OF BEARINGS:

THE BASIS OF BEARING HEREON IS THE CENTERLINE OF EL CHIMISAL ROAD BEING N 45°45'33" W AS SHOWN ON TRACT NO. 29473-1 FILED IN BOOK 394, OF MAPS PAGES 1 THROUGH 9, RECORDS OF RIVERSIDE COUNTY.



LEGEND:

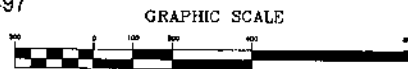
- R-1 ONE-FAMILY DWELLINGS
- R-5 OPEN AREA COMBINING ZONE RESIDENTIAL DEVELOPMENTS

MAP NO. 2.2232

CHANGE OF OFFICIAL ZONING PLAN
AMENDING
MAP NO. 2 ORDINANCE NO. 348

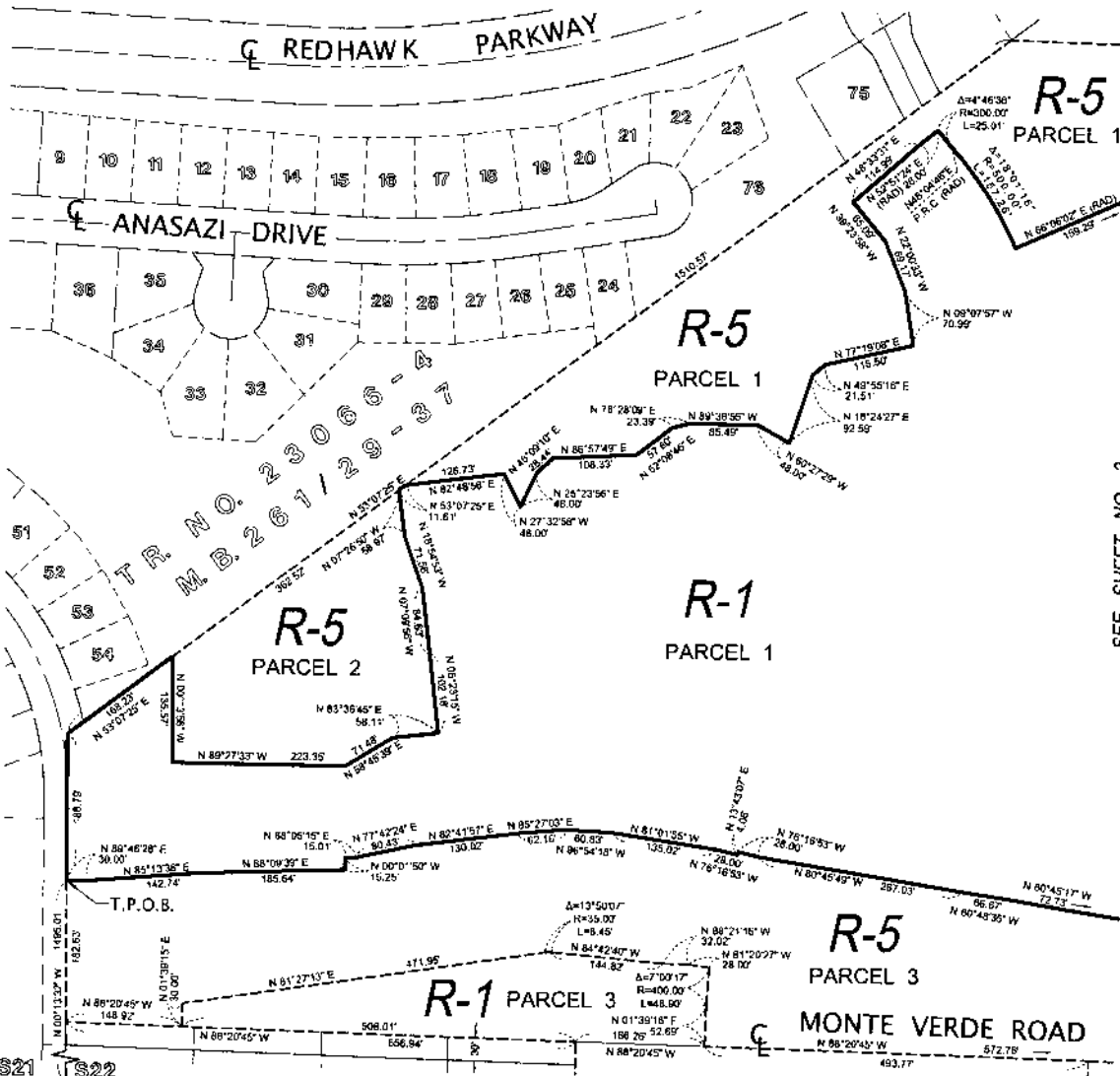
CHANGE OF ZONE CASE NO. 6926
ADOPTED BY ORDINANCE NO. 348.4497
DATE: MAY 15, 2007

- A.P.N. NO'S
- 917-310-004,
 - 917-310-007,
 - 917-310-018,
 - 917-310-018,
 - 917-310-020,
 - 317-310-021,
 - 917-310-033,
 - 917-260-036,
 - 917-260-037,
 - 917-260-040,
 - 917-260-041



RIVERSIDE COUNTY BOARD OF SUPERVISORS

SEE SHEET 10 OF 10 FOR AMENDMENT BOUNDARY



SEE SHEET NO. 3

S21 S22
S28 S27
P.O.C.
T. 8 S., R. 2 W.
S. B. M.

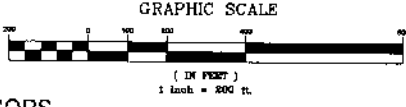
LEGEND:
R-1 ONE-FAMILY DWELLINGS
R-5 OPEN AREA COMBINING
 ZONE RESIDENTIAL DEVELOPMENTS

MAP NO. 2.2232

CHANGE OF OFFICIAL ZONING PLAN
AMENDING
MAP NO. 2 ORDINANCE NO. 348

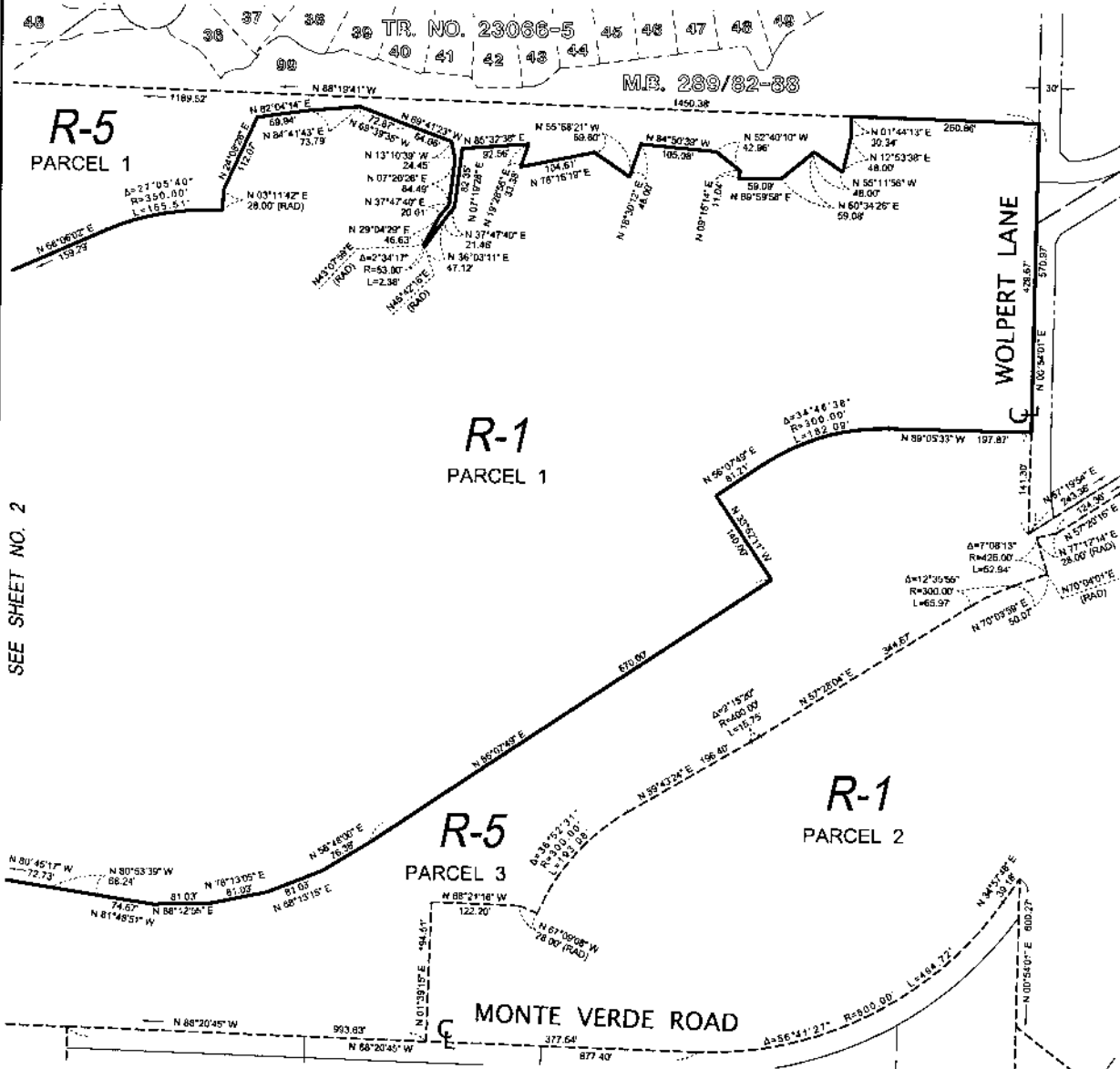
CHANGE OF ZONE CASE NO. 6926
ADOPTED BY ORDINANCE NO. 348.4497
DATE: MAY 15, 2007

- A.P.N. NO'S
- 917-310-004,
- 917-310-007,
- 917-310-018,
- 917-310-019,
- 917-310-020,
- 317-310-021,
- 917-310-033,
- 917-260-036,
- 917-260-037,
- 917-260-040,
- 917-260-041



RANCHO CALIFORNIA AREA
SECTION 22, T. 8 S., R. 2 W., S.B.M.

SEE SHEET 10 OF 10 FOR AMENDMENT BOUNDARY



SEE SHEET NO. 2

LEGEND:

- R-1 ONE-FAMILY DWELLINGS
- R-5 OPEN AREA COMBINING ZONE RESIDENTIAL DEVELOPMENTS

MAP NO. 2.2232

CHANGE OF OFFICIAL ZONING PLAN
AMENDING
MAP NO. 2 ORDINANCE NO. 348

CHANGE OF ZONE CASE NO. 6926
ADOPTED BY ORDINANCE NO. 348.4497
DATE: MAY 15, 2007

- A.P.N. NO'S
- 917-310-004,
 - 917-310-007,
 - 917-310-018,
 - 917-310-019,
 - 917-310-020,
 - 317-310-021,
 - 917-310-033,
 - 917-260-036,
 - 917-260-037,
 - 917-260-040,
 - 917-260-041



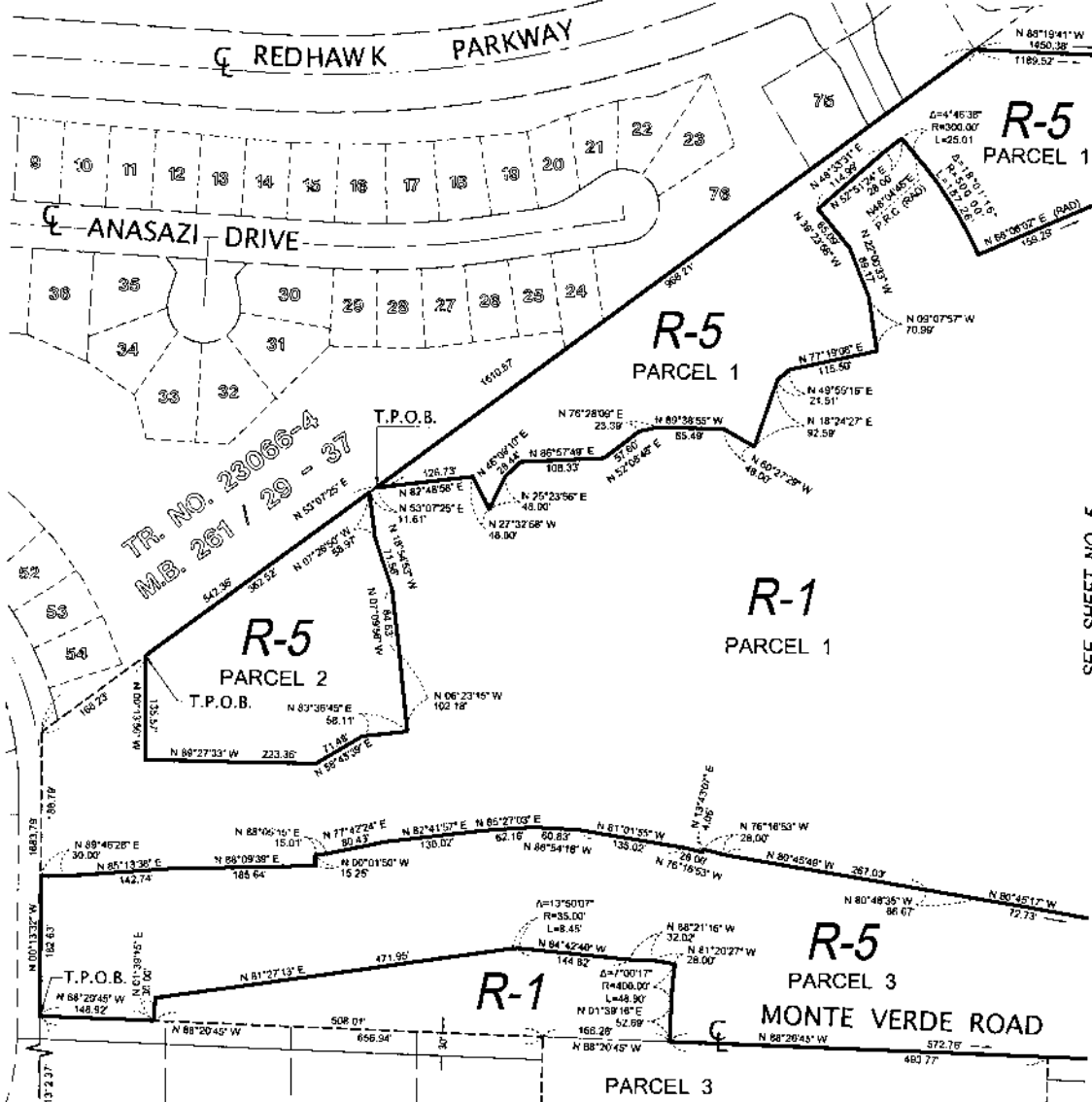
GRAPHIC SCALE



(IN FEET)
1 inch = 200 ft.

RIVERSIDE COUNTY BOARD OF SUPERVISORS

SEE SHEET 10 OF 10 FOR AMENDMENT BOUNDARY



SEE SHEET NO. 5

S21 S22
S28 S27
P.O.C.
T. 8 S., R. 2 W.
S. B. M.

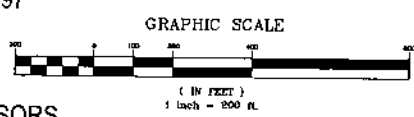
LEGEND:
[R-1] ONE-FAMILY DWELLINGS
[R-5] OPEN AREA COMBINING
ZONE RESIDENTIAL DEVELOPMENTS

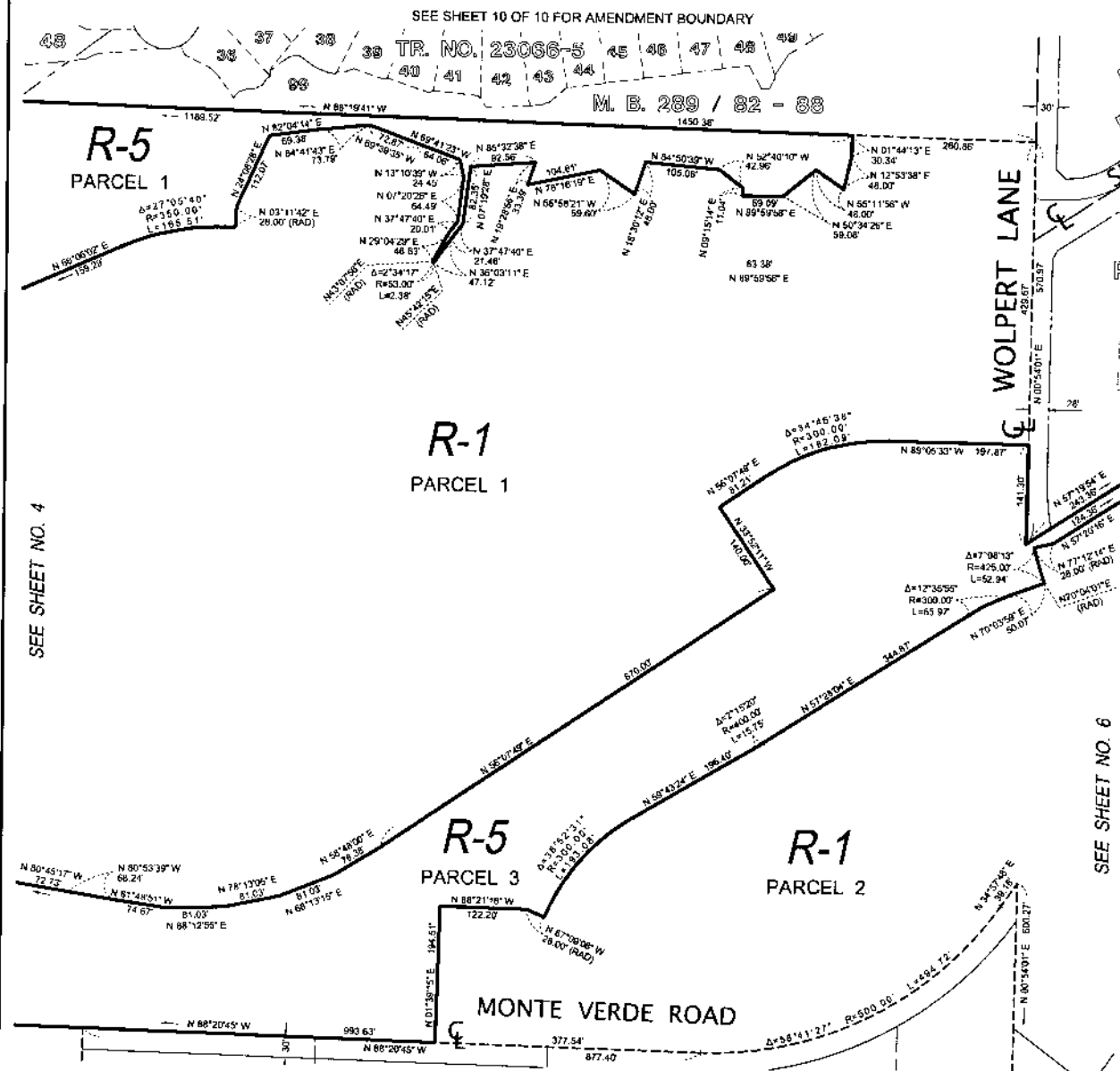
MAP NO. 2.2232

CHANGE OF OFFICIAL ZONING PLAN
AMENDING
MAP NO. 2 ORDINANCE NO. 348

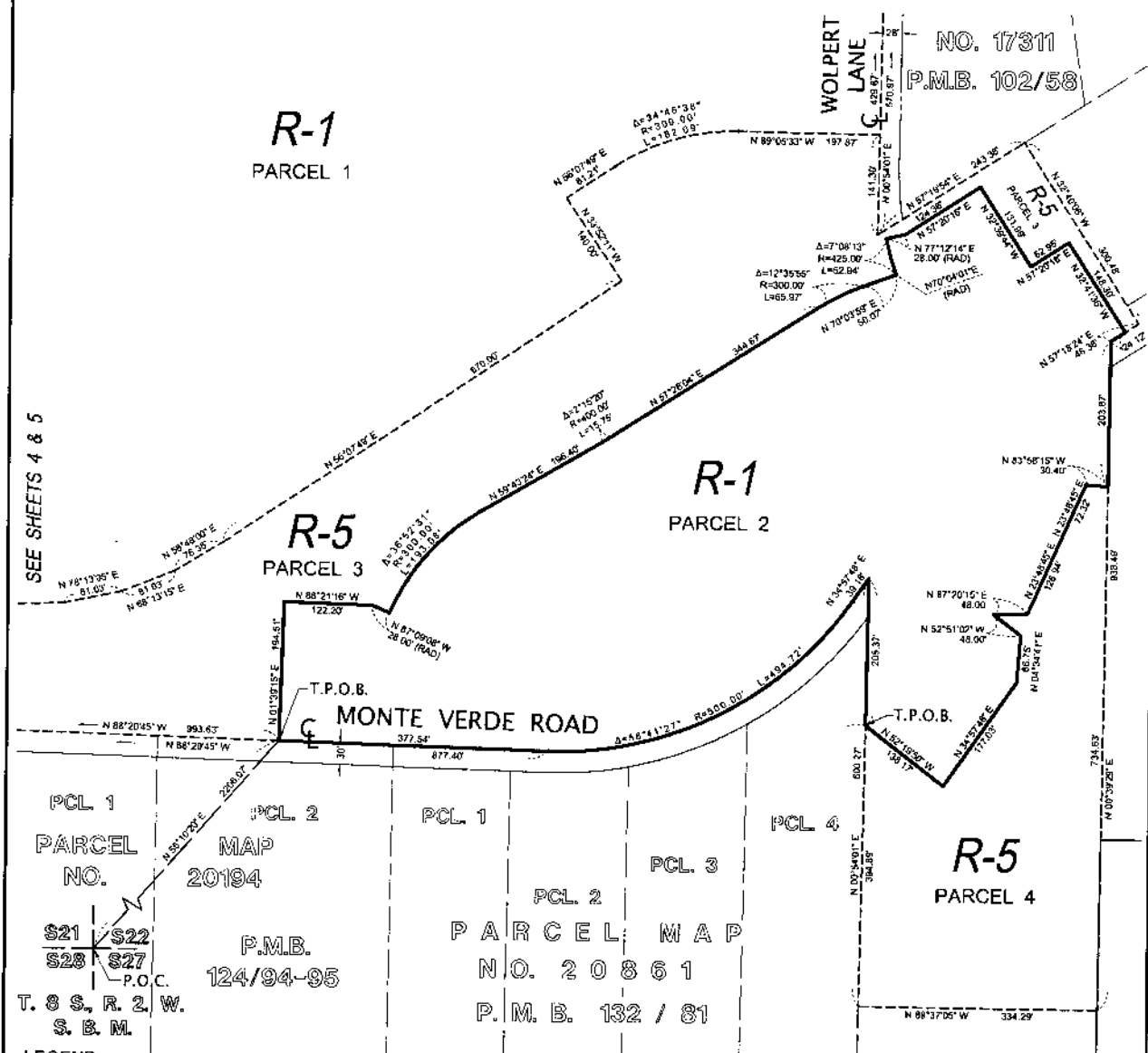
CHANGE OF ZONE CASE NO. 6926
ADOPTED BY ORDINANCE NO. 348.4497
DATE: MAY 15, 2007

A.P.N. NO'S
917-310-004,
917-310-007,
917-310-018,
917-310-019,
917-310-020,
317-310-021,
917-310-033,
917-260-036,
917-260-037,
917-260-040,
917-260-041





SEE SHEET 10 OF 10 FOR AMENDMENT BOUNDARY



LEGEND:

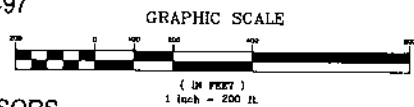
- R-1 ONE-FAMILY DWELLINGS
- R-5 OPEN AREA COMBINING ZONE RESIDENTIAL DEVELOPMENTS

MAP NO. 2.2232

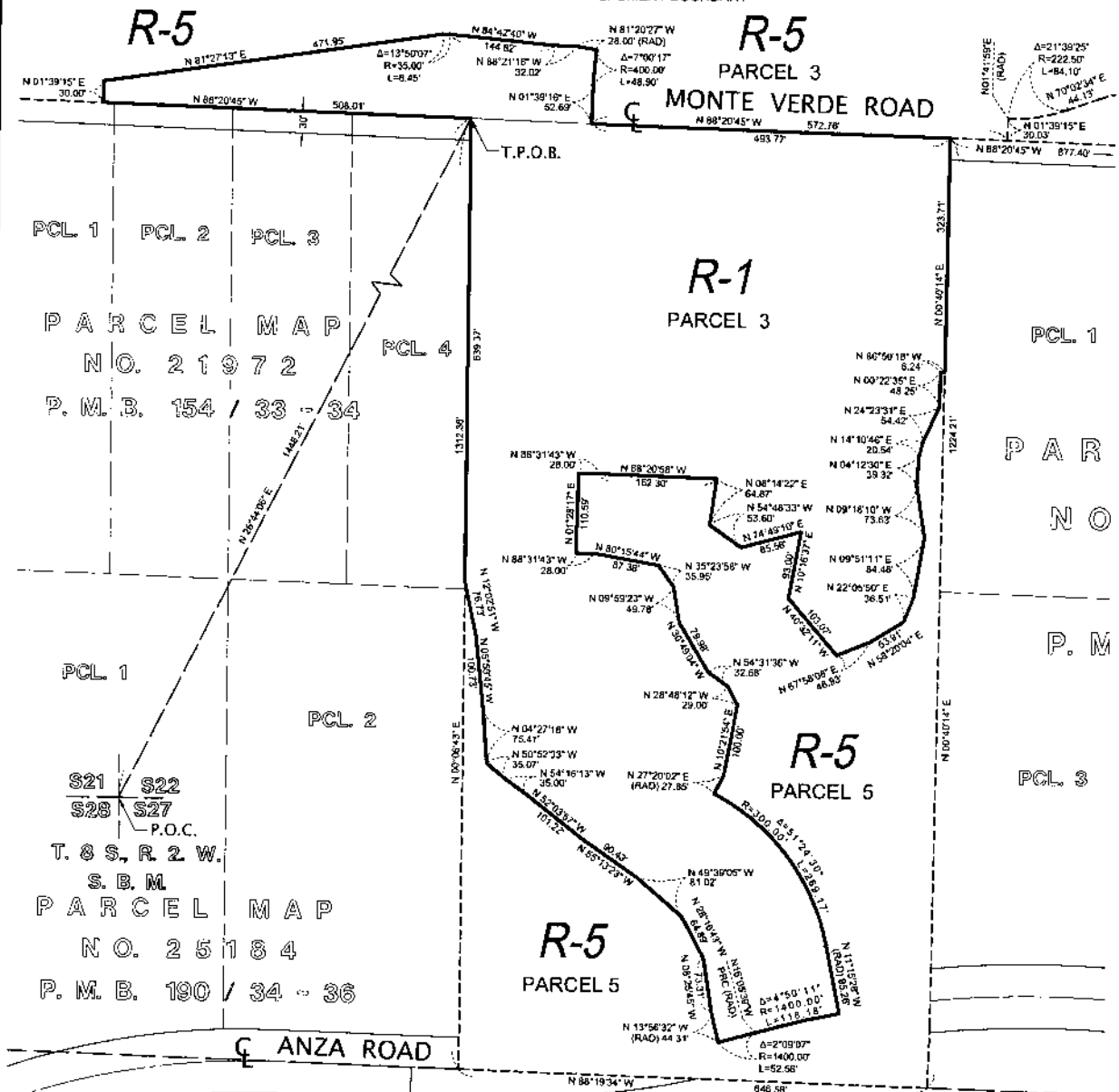
CHANGE OF OFFICIAL ZONING PLAN
AMENDING
MAP NO. 2 ORDINANCE NO. 348

CHANGE OF ZONE CASE NO. 6926
ADOPTED BY ORDINANCE NO. 348.4497
DATE: MAY 15, 2007

- A.P.N. NO'S
917-310-004,
917-310-007,
917-310-018,
917-310-019,
917-310-020,
317-310-021,
917-310-033,
917-260-036,
917-260-037,
917-260-040,
917-260-041



SEE SHEET 10 OF 10 FOR AMENDMENT BOUNDARY



- LEGEND:
- R-1 ONE-FAMILY DWELLINGS
 - R-5 OPEN AREA COMBINING ZONE RESIDENTIAL DEVELOPMENTS

MAP NO. 2.2232

CHANGE OF OFFICIAL ZONING PLAN
AMENDING

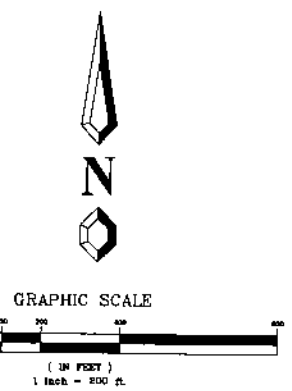
MAP NO. 2 ORDINANCE NO. 348

CHANGE OF ZONE CASE NO. 6926

ADOPTED BY ORDINANCE NO. 348.4497

DATE: MAY 15, 2007

- A.P.N. NO'S
- 917-310-004,
 - 917-310-007,
 - 917-310-018,
 - 917-310-019,
 - 917-310-020,
 - 317-310-021,
 - 917-310-033,
 - 917-260-036,
 - 917-260-037,
 - 917-260-040,
 - 917-260-041

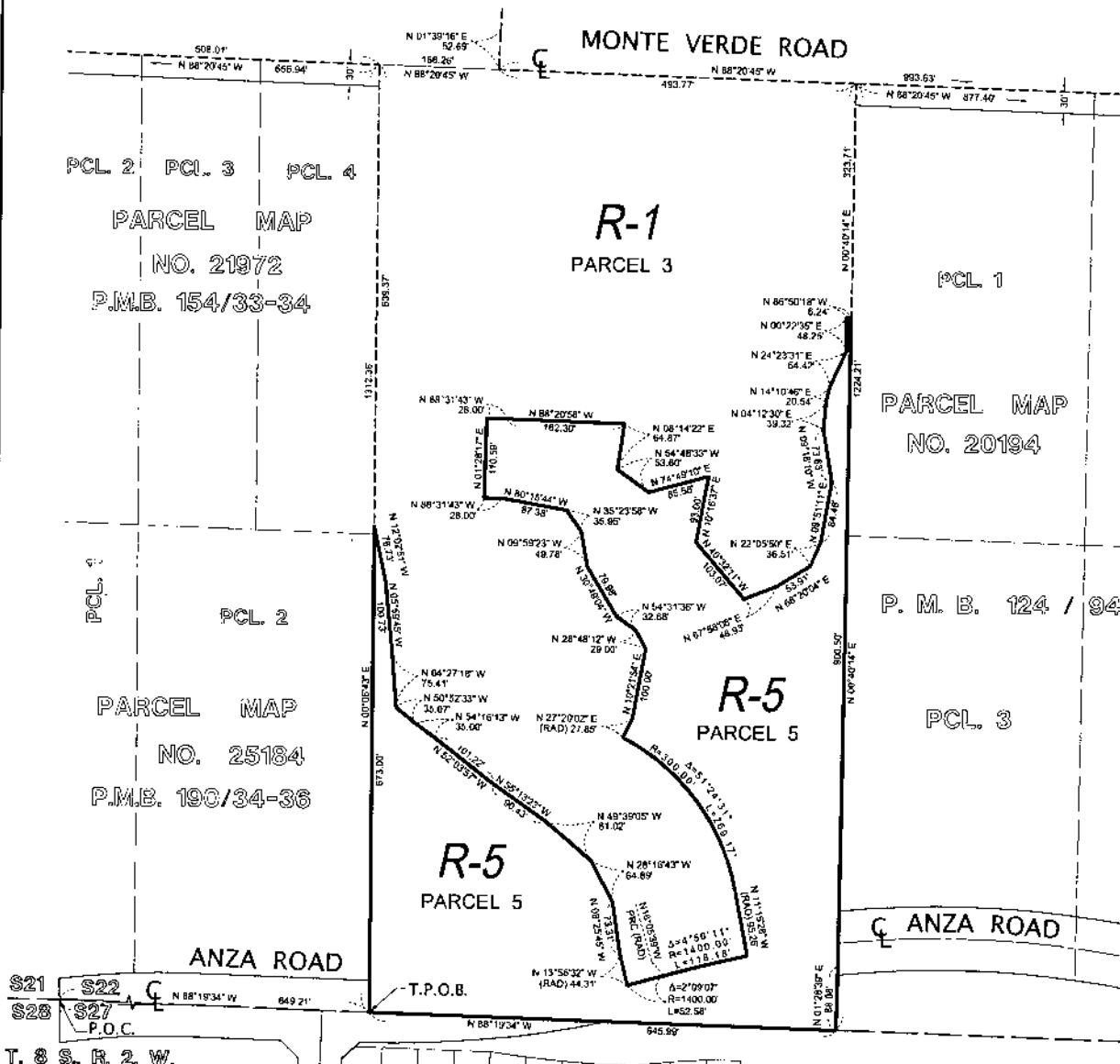


RIVERSIDE COUNTY BOARD OF SUPERVISORS

RANCHO CALIFORNIA AREA
SECTION 22, T. 8 S., R. 2 W., S.B.M.

SHEET 9 OF 10

SEE SHEET 10 OF 10 FOR AMENDMENT BOUNDARY



T. 8 S., R. 2 W.
S. B. M.

LEGEND:

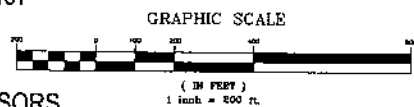
- R - 1 ONE-FAMILY DWELLINGS
- R - 5 OPEN AREA COMBINING
ZONE RESIDENTIAL DEVELOPMENTS

MAP NO. 2.2232

CHANGE OF OFFICIAL ZONING PLAN
AMENDING
MAP NO. 2 ORDINANCE NO. 348

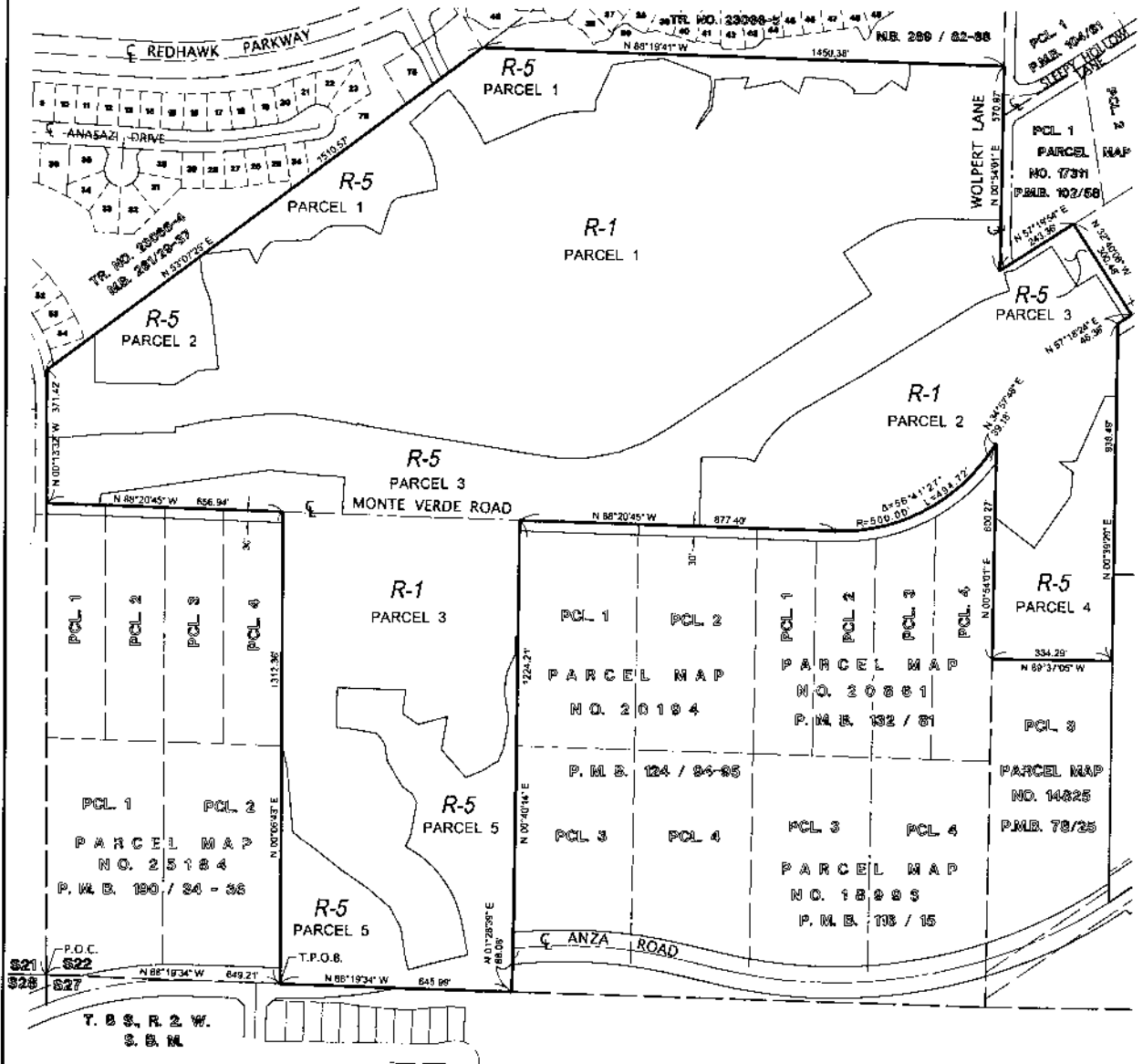
CHANGE OF ZONE CASE NO. 6926
ADOPTED BY ORDINANCE NO. 348.4497
DATE: MAY 15, 2007

- A.P.N. NO'S
- 917-310-004.
 - 917-310-007.
 - 917-310-018.
 - 917-310-019.
 - 917-310-020.
 - 317-310-021.
 - 917-310-033.
 - 917-260-036.
 - 917-260-037.
 - 917-260-040.
 - 917-260-041



RIVERSIDE COUNTY BOARD OF SUPERVISORS

RANCHO CALIFORNIA AREA
SECTION 22, T. 8 S., R. 2 W., S.B.M.



LEGEND:

- R-1 ONE-FAMILY DWELLINGS
- R-5 OPEN AREA COMBINING ZONE RESIDENTIAL DEVELOPMENTS

MAP NO. 2.2232

CHANGE OF OFFICIAL ZONING PLAN
AMENDING
MAP NO. 2 ORDINANCE NO. 348

CHANGE OF ZONE CASE NO. 6926
ADOPTED BY ORDINANCE NO. 348.4497
DATE: MAY 15, 2007

- A.P.N. NO'S
- 917-310-004,
 - 917-310-007,
 - 917-310-018,
 - 917-310-019,
 - 917-310-020,
 - 317-310-021,
 - 917-310-033,
 - 917-260-036,
 - 917-260-037,
 - 917-260-040,
 - 917-260-041

