

**SUBMITTAL TO THE BOARD OF SUPERVISORS
COUNTY OF RIVERSIDE, STATE OF CALIFORNIA**

284A



FROM: TLMA - Transportation Dept.

SUBMITTAL DATE:
June 18, 2007

SUBJECT: Landscaping and Lighting Maintenance District No. 89-1-Consolidated,
Annexation of Street Lighting Zone 68

RECOMMENDED MOTION: That the Board:

1. Adopt resolution No. 2007-299, Resolution of the County of Riverside confirming the diagram and assessment of Street Lighting Zone 68 of Landscaping and Lighting Maintenance District No. 89-1-Consolidated, and levying assessments on all assessable lots and parcels of land therein for fiscal year 2007/08.
2. Direct the Auditor-Controller's office to establish an interest-bearing sub-fund 20300 to receive deposits and interest thereon from Street Lighting Zone 68 of Landscaping and Lighting Maintenance District No. 89-1-Consolidated; in accordance with Section 22655-22656 of the Streets and Highways Code.

FORM APPROVED
COUNTY COUNSEL

JUN 11 2007

Departmental Concurrence

BY *[Signature]*

Dale A. Gardner

[Signature]
George A. Johnson
Director of Transportation

(continued on next page)

FINANCIAL DATA	Current F.Y. Total Cost:	\$0.00	In Current Year Budget:	No
	Current F.Y. Net County Cost:	\$0.00	Budget Adjustment:	No
	Annual Net County Cost:	\$0.00	For Fiscal Year:	2006-07

SOURCE OF FUNDS:	Positions To Be Deleted Per A-30	<input type="checkbox"/>
	Requires 4/5 Vote	<input type="checkbox"/>

C.E.O. RECOMMENDATION: APPROVE

BY *[Signature]*
Tina Grande

County Executive Office Signature

Policy

Policy

Consent

Consent

Dep't Recomm.:

Per Exec. Ofc.:

Prev. Agn. Ref. | District: 4 | Agenda Number:

3.74

The Honorable Board of Supervisors

RE: Landscaping and Lighting Maintenance District No. 89-1-Consolidated, Annexation
of Street Lighting Zone 68

June 18, 2007

Page 2 of 2

BACKGROUND: On June 5, 2007, a public hearing was held to receive all testimony regarding the annexation of Street Lighting Zone 68 to Landscaping and Lighting Maintenance District No. 89-1-Consolidated (L&LM Dist. No. 89-1-C"). After closing the public hearing, the Board directed the Director of Transportation, or his/her designee, to tally the assessment ballots that had been received prior to the close of the hearing. The assessment ballots were to be tabulated on June 6, 2007 at 10:00 a.m. in Conference Room B on the 8th Floor of the County Administrative Center. The tabulation shows that votes representing 7 parcel(s) out of a possible 7 were cast, and that 7 vote(s) (or 100%) were cast in favor of the annexation of Street Lighting Zone 68 to L&LM Dist. No. 89-1-C and the levy and enrollment of the special assessment.

The proposed budget for fiscal year 2007/08 for Street Lighting Zone 68 is \$660.00 that will result in an assessment for fiscal year 2007/08 within Street Lighting Zone 68 of \$2.00 per acre. Street Lighting Zone 68 includes 7 commercial parcels totaling 331.44 acre(s). The annual assessment will be adjusted annually by the greater of 2% or the cumulative percentage increase in the CPI-U for "electricity", if any, as it stands as of March of each year over the base index for March of 2007.

Adoption of Resolution No. 2007-299 confirms the assessment levy as indicated in the Engineer's Report for fiscal year 2007/08 for Street Lighting Zone 68 of L&LM Dist. No. 89-1-C and orders the placement of the annual assessment on the County's Assessment Roll for fiscal year 2007/08.

2 **RESOLUTION NO. 2007-299**

3
4 **RESOLUTION OF THE BOARD OF SUPERVISORS OF THE COUNTY OF RIVERSIDE ORDERING**
5 **THE ANNEXATION OF STREET LIGHTING ZONE 68 TO LANDSCAPING AND LIGHTING**
6 **MAINTENANCE DISTRICT NO. 89-1-CONSOLIDATED OF THE COUNTY OF RIVERSIDE AND**
7 **CONFIRMING THE DIAGRAM AND ASSESSMENT FOR STREET LIGHTING ZONE 68 OF**
8 **LANDSCAPING AND LIGHTING MAINTENANCE DISTRICT NO. 89-1-CONSOLIDATED AND**
9 **LEVYING ASSESSMENTS ON ALL ASSESSABLE LOTS AND PARCELS OF LAND THEREIN**
10 **FOR THE FISCAL YEAR 2007/08**

11 **WHEREAS**, on April 3, 2007 the Board of Supervisors (hereinafter the "Board of Supervisors")
12 of the County of Riverside (hereinafter the "County") adopted Resolution No. 2007-134, pursuant to
13 Section 22608 and Section 22585 et seq. of the Streets and Highways Code, declaring the intention of
14 the Board of Supervisors to order the annexation of Street Lighting Zone 68 to Landscaping and
15 Lighting Maintenance District No. 89-1-Consolidated (hereinafter "L&LMD No. 89-1-C") of the County
16 pursuant to the Landscaping and Lighting Act of 1972, being Part 2 (commencing with Section 22500)
17 of Division 15 of the Streets and Highways Code, and giving notice of and setting a public hearing for
18 9:30 a.m. on June 5, 2007 at the meeting room of the Board of Supervisors and requiring that the
19 notice of the public hearing and assessment ballots be mailed to all owners of property within Street
20 Lighting Zone 68 as shown on the equalized tax roll; and

21 **WHEREAS**, notice of said public hearing was duly published and mailed as required by
22 Resolution No. 2007-134, Section 22626 of the Streets and Highways Code and Sections 53753 and
23 54954.6 of the Government Code and the assessment ballots were timely mailed to all owners of
24 property within said Street Lighting Zone 68 as shown on the equalized tax roll; and

25 **WHEREAS**, at 9:30 a.m. on June 5, 2007, as set forth in Resolution No. 2007-134, the Board
26 of Supervisors held a public hearing and afforded all interested persons an opportunity to be heard,
and considered all oral statements and all written protest or communications made or filed by any
interested persons, closed the public hearing and directed the Director of Transportation, or his
designee, as an impartial person having no vested interest in the annexation of Street Lighting

1 Zone 68 to L&LMD No. 89-1-C as required by Section 53753(e) of the Government Code to tally the
2 assessment ballots that had been received prior to the close of the public hearing; and

3 **WHEREAS**, the tally of the assessment ballots show that assessment ballots were timely
4 received from the owners of 7 parcels out of a possible 7 parcels and that 7 parcels (100 percent of
5 the assessment ballots received) voted in favor of annexation of Street Lighting Zone 68 to L&LMD
6 No. 89-1-C and the levy of an annual assessment in said Street Lighting Zone 68 beginning fiscal year
7 2007/08; and

8 **WHEREAS**, the Board of Supervisors may proceed, pursuant to Section 22631 of the Streets
9 and Highways Code, to adopt a resolution confirming the diagram and assessment, either as originally
10 proposed, or as changed by the Board of Supervisors, and the adoption of such a resolution shall
11 constitute the levy of an assessment on all assessable lots and parcels of land within Street Lighting
12 Zone 68 of L&LMD No. 89-1-C beginning fiscal year 2007/08.

13 **NOW, THEREFOR, BE IT RESOLVED, FOUND, DETERMINED AND ORDERED** by the
14 Board of Supervisors of the County in regular session on June 26, 2007 as follows:

15 **Section 1. Findings.** The Board of Supervisors finds:

- 16 (a) the proceeding recitals are correct;
- 17 (b) compliance has been had with all the requirements of the Landscaping and
18 Lighting Act of 1972, being Part 2 (commencing with Section 22500) of Division
19 15 of the Streets and Highways Code, and Sections 53753 and 54954.6 of the
20 Government Code;
- 21 (c) a majority protest to the annexation of and annual assessment of Street Lighting
22 Zone 68 of L&LMD No. 89-1-C has not been filed;
- 23 (d) the tally of the assessment ballots timely received was 100 percent voted in
24 favor of the annexation of Street Lighting Zone 68 to L&LMD No. 89-1-C and the
25 levy of an annual assessment beginning fiscal year 2007/08, and 0 percent
26 voted no;

- 1 (e) the Board of Supervisors may proceed to adopt a resolution ordering the
2 annexation of Street Lighting Zone 68 to L&LMD No. 89-1-C;
- 3 (f) the Board of Supervisors may proceed to adopt a resolution confirming the
4 diagram and assessment for Street Lighting Zone 68 of L&LMD No. 89-1-C
5 either as originally proposed or as changed by it; and
- 6 (g) the assessments to be levied on the assessable lots and parcels of land within
7 Street Lighting Zone 68 of L&LMD No. 89-1-C for the provision of electricity to
8 all streetlights in said Street Lighting Zone 68 during the fiscal year 2007/08 as
9 contained in the report of the Director of Transportation which is on file with the
10 Clerk of the Board of Supervisors (hereinafter the "Report") are based on
11 benefits derived by such lots and parcels from the availability of such
12 streetlights, and are not based upon the ownership of such lots and parcels.

13 **Section 2. Annexation.** Street Lighting Zone 68, as proposed to be annexed to
14 L&LMD No. 89-1-C, includes all the property subject to Tract Map No. 34484 and Plot Plan No. 19740
15 in the County of Riverside, State of California as described in Exhibit "A" attached hereto, shall be and
16 is annexed into L&LMD No. 89-1-C.

17 **Section 3. Improvements.** The improvements authorized for Street Lighting
18 Zone 68 of L&LMD No. 89-1-C are:

- 19 (a) Providing electricity to all streetlights within the public right-of-way including
20 incidental costs and expenses.

21 **Section 4. Confirmation of Report.** The Report and the assessment diagram and
22 the assessment of estimated costs for the provision of electricity to all streetlights in Street Lighting
23 Zone 68 of L&LMD No. 89-1-C for fiscal year 2007/08 as contained in the Report are confirmed.

24 **Section 5. Levy of Assessment.** Pursuant to Section 22631 of the Streets and
25 Highways Code the adoption of this resolution constitutes the levy of the assessment for the provision
26 of electricity to all streetlights in Street Lighting Zone 68 of L&LMD No. 89-1-C during fiscal year

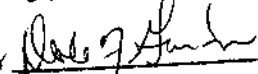
1 2007/08, as contained in the Report, and such assessment is levied. The Clerk of the Board of
2 Supervisors is directed to file a certified copy of this resolution, together with the diagram and
3 assessment contained in the Report with the County Auditor-Controller of the County of Riverside,
4 who, pursuant to Section 22645 of the Streets and Highways Code, shall enter on the County Tax Roll
5 opposite each lot or parcel of land the amount assessed thereupon, as shown in said assessment.

6 **Section 6. Effective Date.** This Resolution shall take effect from and after its date
7 of adoption.

8
9 FORM APPROVED
COUNTY COUNSEL

10 JUN 11 2007

11 BY



12 Dale A. Gardner

EXHIBIT "A"

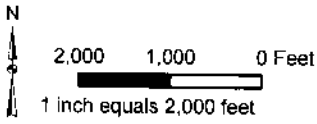
DESCRIPTION OF BOUNDARIES

The boundaries of Street Lighting Zone 68 to be annexed into Landscaping and Lighting Maintenance District No. 89-1-Consolidated, of the County of Riverside are coterminous with the boundaries of APN 653-410-052, 061, 062, 653-420-042, 653-430-007, 653-440-034, and 035 as shown on Assessment Roll in the County of Riverside, State of California in Fiscal Year 2007/08.

1
2
3
4
5
6
7
8
9
10
11
12
13
14
15
16
17
18
19
20
21
22
23
24
25

LANDSCAPING AND LIGHTING MAINTENANCE DISTRICT NO. 89-1-CONSOLIDATED
STREET LIGHTING ZONE 68

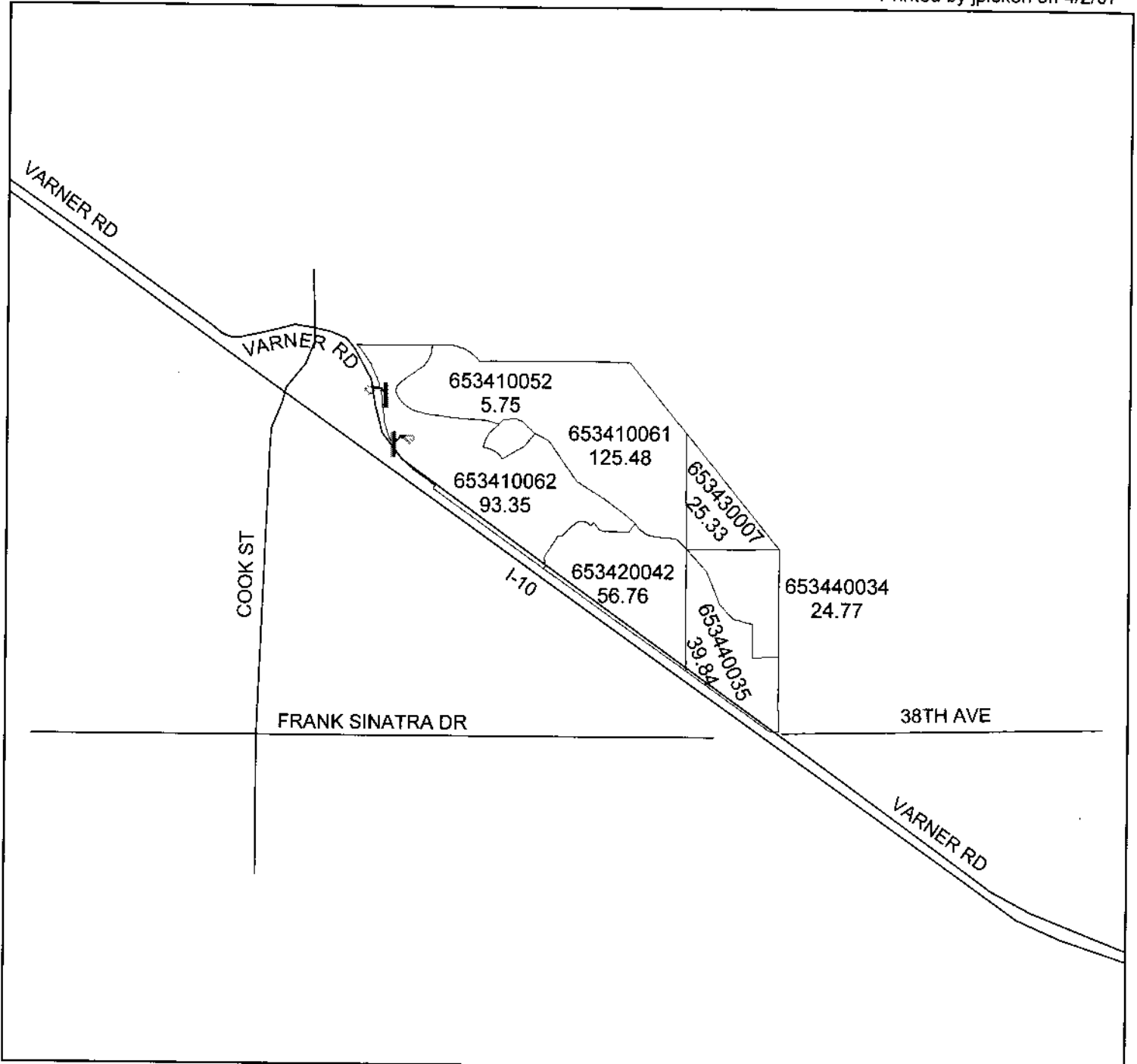
PORTION OF SECTIONS 27, 34, & 35, T.4S., R.6E
TRACT MAP NO. 34484/PARCEL MAP NO. 19740 - 7 PARCELS



The County of Riverside assumes no warranty or legal responsibility for the information contained on this map. Data and information represented on this map is subject to updates, modifications and may not be complete or appropriate for all purposes. County lists and other sources should be queried for the most current information. Do not copy or reuse this map.

ASSESSMENT DIAGRAM

Printed by jpickeri on 4/2/07



 DENOTES MAINTAINED STREETLIGHT