

**SUBMITTAL TO THE BOARD OF SUPERVISORS
COUNTY OF RIVERSIDE, STATE OF CALIFORNIA**

870A



FROM: TLMA - Transportation Dept.

SUBMITTAL DATE:
July 24, 2007

SUBJECT: Landscaping and Lighting Maintenance District No. 89-1-Consolidated,
Annexation of Zone 91

RECOMMENDED MOTION: That the Board:

1. Adopt resolution No. 2007-373, Resolution of the County of Riverside confirming the diagram and assessment of Zone 91 of Landscaping and Lighting Maintenance District No. 89-1-Consolidated, and levying assessments on all assessable lots and parcels of land therein for fiscal year 2007/08.
2. Direct the Auditor-Controller's office to establish an interest-bearing sub-fund 20300 to receive deposits and interest thereon from Zone 91 of Landscaping and Lighting Maintenance District No. 89-1-Consolidated; in accordance with Section 22655-22656 of the Streets and Highways Code.

FORM APPROVED
COUNTY COUNSEL

JUL 24 2007
Departmental Conference

BY *[Signature]*
Dale A. Gardner

[Signature]
George A. Johnson
Director of Transportation

JW:jp

(continued on next page)

| | | | | |
|-----------------------|-------------------------------|--------|-------------------------|---------|
| FINANCIAL DATA | Current F.Y. Total Cost: | \$0.00 | In Current Year Budget: | No |
| | Current F.Y. Net County Cost: | \$0.00 | Budget Adjustment: | No |
| | Annual Net County Cost: | \$0.00 | For Fiscal Year: | 2007-08 |

| | | | |
|-------------------------|---|---|--------------------------|
| SOURCE OF FUNDS: | Landscaping and Lighting Maintenance District No. 89-1-Consolidated – 100% | Positions To Be Deleted Per A-30 | <input type="checkbox"/> |
| | | Requires 4/5 Vote | <input type="checkbox"/> |

C.E.O. RECOMMENDATION:
APPROVE
BY *[Signature]*
Tina Grande
County Executive Office Signature

Policy
 Policy

Consent
 Consent

Dept. Recomm.:
Per Exec. Ofc.:

Prev. Agn. Ref. | District: 3 | Agenda Number: **3.135**

The Honorable Board of Supervisors

RE: Landscaping and Lighting Maintenance District No. 89-1-Consolidated, Annexation
of Zone 91

July 24, 2007

Page 2 of 2

BACKGROUND: On July 17, 2007, a public hearing was held to receive all testimony regarding the annexation of Zone 91 to Landscaping and Lighting Maintenance District No. 89-1-Consolidated (L&LMD No. 89-1-C"). After closing the public hearing, the Board directed the Director of Transportation, or his/her designee, to tally the assessment ballots that had been received prior to the close of the hearing. The assessment ballots were to be tabulated on July 18, 2007 at 10:00 a.m. in Conference Room B on the 8th Floor of the County Administrative Center. The tabulation shows that votes representing 25 parcels out of a possible 25 were cast, and that 25 votes (or 100%) were cast in favor of the annexation of Zone 91 to L&LMD No. 89-1-C and the levy and enrollment of the special assessment.

The proposed budget for fiscal year 2007/08 for Zone 91 is \$14,138.00 that will result in an assessment for fiscal year 2007/08 within Zone 91 of \$565.52 per parcel. Zone 91 includes 25 single-family residential lots. The annual assessment will be adjusted annually by the greater of 2% or the cumulative percentage increase in the CPI-U, if any, as it stands as of March of each year over the base index for March of 2007.

Adoption of Resolution No. 2007-373 confirms the assessment levy as indicated in the Engineer's Report for fiscal year 2007/08 for Zone 91 of L&LMD No. 89-1-C and orders the placement of the annual assessment on the County's Assessment Roll for fiscal year 2007/08.

2 RESOLUTION NO. 2007-373

3
4 **RESOLUTION OF THE BOARD OF SUPERVISORS OF THE COUNTY OF RIVERSIDE ORDERING**
5 **THE ANNEXATION OF ZONE 91 TO LANDSCAPING AND LIGHTING MAINTENANCE DISTRICT**
6 **NO. 89-1-CONSOLIDATED OF THE COUNTY OF RIVERSIDE AND CONFIRMING THE DIAGRAM**
7 **AND ASSESSMENT FOR ZONE 91 OF LANDSCAPING AND LIGHTING MAINTENANCE**
8 **DISTRICT NO. 89-1-CONSOLIDATED AND LEVYING ASSESSMENTS ON ALL ASSESSABLE**
9 **LOTS AND PARCELS OF LAND THEREIN FOR THE FISCAL YEAR 2007/08**

10
11 **WHEREAS**, on May 15, 2007 the Board of Supervisors (hereinafter the "Board of Supervisors")
12 of the County of Riverside (hereinafter the "County") adopted Resolution No. 2007-217, pursuant to
13 Section 22608 and Section 22585 et seq. of the Streets and Highways Code, declaring the intention of
14 the Board of Supervisors to order the annexation of Zone 91 to Landscaping and Lighting
15 Maintenance District No. 89-1-Consolidated (hereinafter "L&LMD No. 89-1-C") of the County pursuant
16 to the Landscaping and Lighting Act of 1972, being Part 2 (commencing with Section 22500) of
17 Division 15 of the Streets and Highways Code, and giving notice of and setting a public hearing for
18 9:30 a.m. on July 17, 2007 at the meeting room of the Board of Supervisors and requiring that the
19 notice of the public hearing and assessment ballots be mailed to all owners of property within Zone 91
20 as shown on the equalized tax roll; and

21 **WHEREAS**, notice of said public hearing was duly published and mailed as required by
22 Resolution No. 2007-217, Section 22626 of the Streets and Highways Code and Sections 53753 and
23 54954.6 of the Government Code and the assessment ballots were timely mailed to all owners of
24 property within said Zone 91 as shown on the equalized tax roll; and

25 **WHEREAS**, at 9:30 a.m. on July 17, 2007, as set forth in Resolution No. 2007-217, the Board
26 of Supervisors held a public hearing and afforded all interested persons an opportunity to be heard,
and considered all oral statements and all written protest or communications made or filed by any
interested persons, closed the public hearing and directed the Director of Transportation, or his
designee, as an impartial person having no vested interest in the annexation of Zone 91 to L&LMD No.

1 89-1-C as required by Section 53753(e) of the Government Code to tally the assessment ballots that
2 had been received prior to the close of the public hearing; and

3 **WHEREAS**, the tally of the assessment ballots show that assessment ballots were timely
4 received from the owner of 25 parcels out of a possible 25 parcels and that 25 parcels (100 percent of
5 the assessment ballots received) voted in favor of annexation of Zone 91 to L&LMD No. 89-1-C and
6 the levy of an annual assessment in said Zone 91 beginning fiscal year 2007/08; and

7 **WHEREAS**, the Board of Supervisors may proceed, pursuant to Section 22631 of the Streets
8 and Highways Code, to adopt a resolution confirming the diagram and assessment, either as originally
9 proposed, or as changed by the Board of Supervisors, and the adoption of such a resolution shall
10 constitute the levy of an assessment on all assessable lots and parcels of land within Zone 91 of
11 L&LMD No. 89-1-C beginning fiscal year 2007/08.

12 **NOW, THEREFOR, BE IT RESOLVED, FOUND, DETERMINED AND ORDERED** by the
13 Board of Supervisors of the County in regular session on July 31, 2007 as follows:

14 **Section 1. Findings.** The Board of Supervisors finds:

- 15 (a) the proceeding recitals are correct;
- 16 (b) compliance has been had with all the requirements of the Landscaping and
17 Lighting Act of 1972, being Part 2 (commencing with Section 22500) of Division
18 15 of the Streets and Highways Code, and Sections 53753 and 54954.6 of the
19 Government Code;
- 20 (c) a majority protest to the annexation of and annual assessment of Zone 91 of
21 L&LMD No. 89-1-C has not been filed;
- 22 (d) the tally of the assessment ballots timely received was 100 percent voted in
23 favor of the annexation of Zone 91 to L&LMD No. 89-1-C and the levy of an
24 annual assessment beginning fiscal year 2007/08, and 0 percent voted no;
- 25 (e) the Board of Supervisors may proceed to adopt a resolution ordering the
26 annexation of Zone 91 to L&LMD No. 89-1-C;

- 1 (f) the Board of Supervisors may proceed to adopt a resolution confirming the
2 diagram and assessment for Zone 91 of L&LMD No. 89-1-C either as originally
3 proposed or as changed by it; and
- 4 (g) the assessments to be levied on the assessable lots and parcels of land within
5 Zone 91 of L&LMD No. 89-1-C for the installation, maintenance and servicing of
6 landscaping, multi-purpose trail, and graffiti abatement improvements in said
7 Zone 91 during the fiscal year 2007/08 as contained in the report of the Director
8 of Transportation which is on file with the Clerk of the Board of Supervisors
9 (hereinafter the "Report") are based on benefits derived by such lots and parcels
10 from the availability of such landscaping, multi-purpose trail, and graffiti
11 abatement improvements, and are not based upon the ownership of such lots
12 and parcels.

13 **Section 2. Annexation.** Zone 91, as proposed to be annexed to L&LMD No.
14 89-1-C, includes all the property subject to Tract Map No. 32458 in the County of Riverside, State of
15 California as described in Exhibit "A" attached hereto, shall be and is annexed into L&LMD No. 89-1-C.

16 **Section 3. Improvements.** The improvements authorized for Zone 91 of L&LMD
17 No. 89-1-C are:

- 18 (a) The maintenance and servicing of landscaping and multi-purpose trails within
19 the public right-of-way including the trimming, fertilizing, weeding and replanting
20 of trees, shrubs, grass, and other ornamental vegetation; and
- 21 (b) The maintenance and servicing of irrigation and electrical facilities associated
22 with the landscaping, including but not limited to electricity for operation of the
23 irrigation system and water for irrigation; and
- 24 (c) Providing graffiti abatement services to walls and structures with the public right-
25 of-way including incidental costs and expenses.
- 26

1 **Section 4. Confirmation of Report.** The Report and the assessment diagram and
2 the assessment of estimated costs for the installation, maintenance and servicing of landscaping,
3 multi-purpose trail, and graffiti abatement improvements in Zone 91 of L&LMD No. 89-1-C for fiscal
4 year 2007/08 as contained in the Report are confirmed.

5 **Section 5. Levy of Assessment.** Pursuant to Section 22631 of the Streets and
6 Highways Code the adoption of this resolution constitutes the levy of the assessment for the
7 installation, and maintenance or servicing of landscaping, multi-purpose trail, and graffiti abatement
8 improvements in Zone 91 of L&LMD No. 89-1-C during fiscal year 2007/08, as contained in the
9 Report, and such assessment is levied. The Clerk of the Board of Supervisors is directed to file a
10 certified copy of this resolution, together with the diagram and assessment contained in the Report
11 with the County Auditor-Controller of the County of Riverside, who, pursuant to Section 22645 of the
12 Streets and Highways Code, shall enter on the County Tax Roll opposite each lot or parcel of land the
13 amount assessed thereupon, as shown in said assessment.

14 **Section 6. Effective Date.** This Resolution shall take effect from and after its date
15 of adoption.

FORM APPROVED
COUNTY COUNSEL
JUL 24 2007
BY 
Dale A. Gardner

EXHIBIT "A"

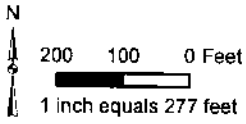
DESCRIPTION OF BOUNDARIES

The boundaries of Zone 91 to be annexed into Landscaping and Lighting Maintenance District No. 89-1-Consolidated, of the County of Riverside are coterminous with the boundaries of 25 parcel(s) as shown on Tract Map No. 32458 in the County of Riverside, State of California for fiscal year 2007/08.

1
2
3
4
5
6
7
8
9
10
11
12
13
14
15
16
17
18
19
20
21
22
23
24

LANDSCAPING AND LIGHTING MAINTENANCE DISTRICT NO. 89-1-CONSOLIDATED
ZONE 91

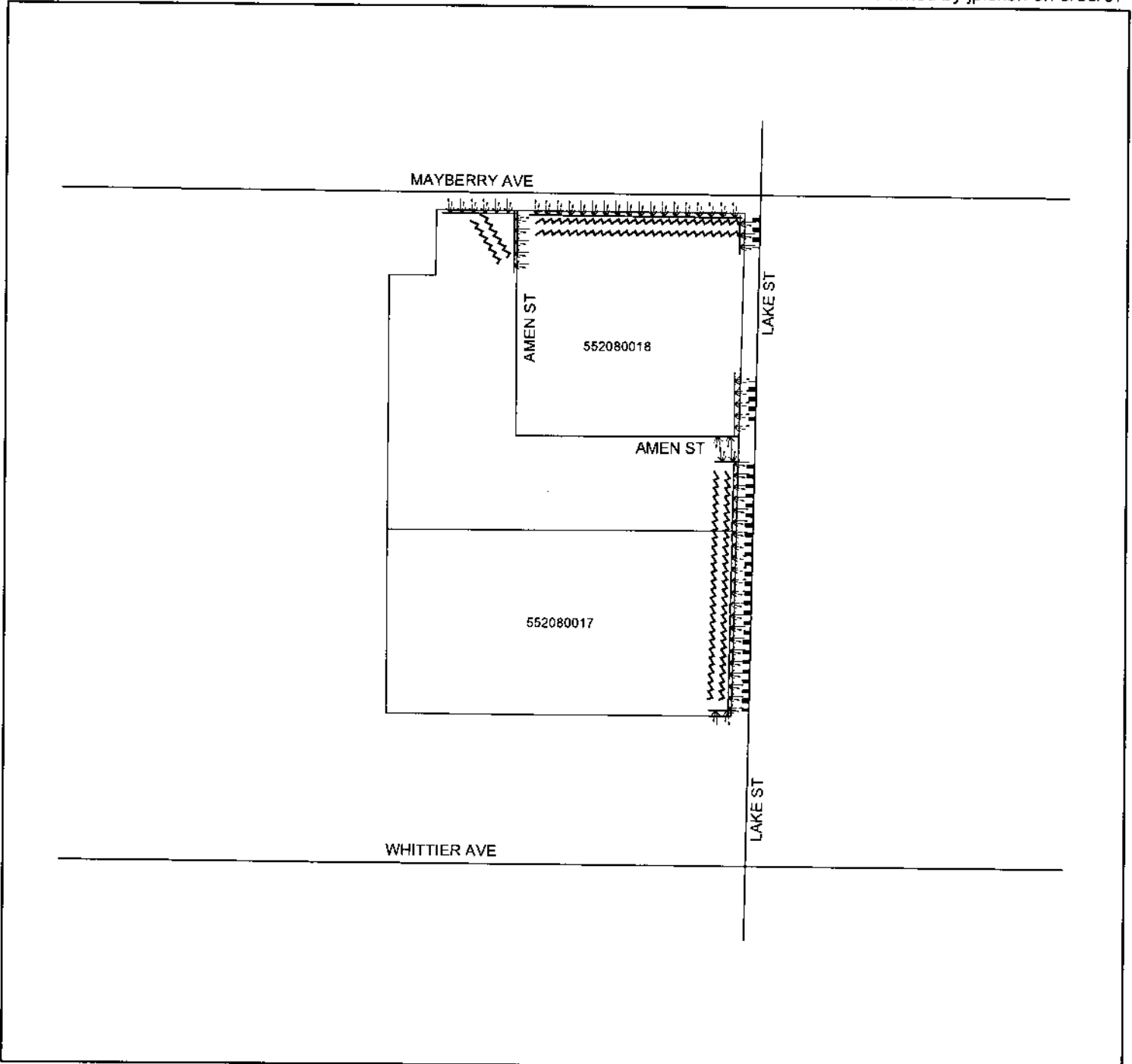
PORTION OF SECTION 18, T.5S., R.1E.
TRACT MAP NO. 32458 - 25 PARCELS

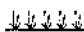

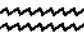


The County of Riverside assumes no warranty or legal responsibility for the information contained on this map. Data and information represented on this map is subject to update, modifications and may not be complete or appropriate for all purposes. County GIS and other sources should be queried for the most current information. Do not copy or resell this map.

Printed by jpickeri on 5/30/07

ASSESSMENT DIAGRAM



-  DENOTES LANDSCAPED AND MAINTAINED PARKWAY
-  DENOTES MAINTAINED MULTI-PURPOSE TRAIL
-  DENOTES MAINTAINED GRAFFITI ABATEMENT