

SUBMITTAL TO THE BOARD OF SUPERVISORS  
COUNTY OF RIVERSIDE, STATE OF CALIFORNIA

250A



FROM: County Counsel

SUBMITTAL DATE: September 6, 2007

SUBJECT: Ordinance No. 348.4527

**RECOMMENDED MOTION:** That the Board of Supervisors adopt Ordinance No. 348.4527 amending the zoning in the Idyllwild District shown on Map No. 16.015 Change of Zone Case No. 7215.

**BACKGROUND:** Change of Zone Case No. 7215 was tentatively approved by the Board of Supervisors on April 10, 2007.

*Joe Rank*  
JOE RANK David HK [unclear] for  
County Counsel

C.E.O. RECOMMENDATION:

APPROVE

BY: *Tina Grande*  
Tina Grande

County Executive Office Signature

Policy  
 Policy

Consent  
 Consent

Department Recommendation:  
Per Executive Office:

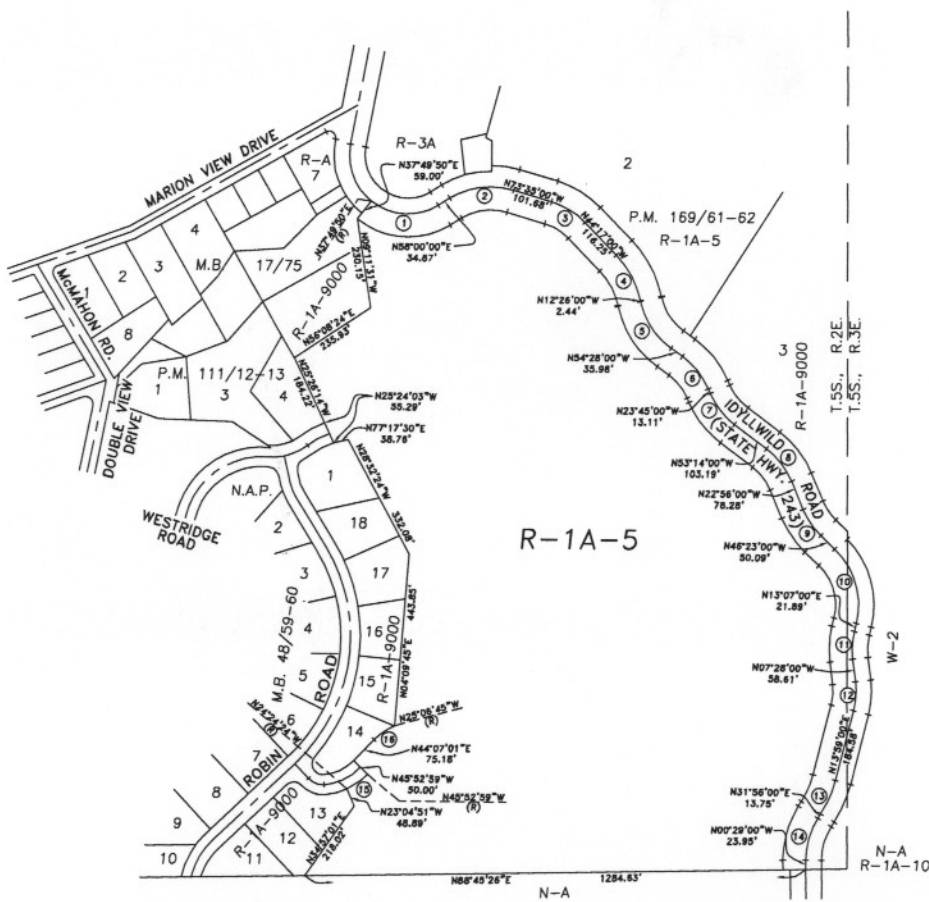
Prev. Agn. ref.

Dist. THIRD

50012EB15 6W 1:14  
AGENDA NO.  
RECEIVED RIVERSIDE COUNTY



SEC. 13, T.5S., R.2E., S.B.B.M.

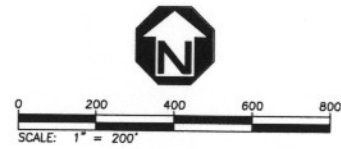


CURVE DATA			
Curve #	Angle	R	T
1	69°49'50"	150.00'	104.70'
2	48°25'00"	200.00'	89.92'
3	19°18'00"	200.00'	52.28'
4	31°51'00"	240.00'	66.48'
5	42°02'00"	200.00'	76.84'
6	30°43'00"	200.00'	54.93'
7	29°29'00"	200.00'	52.62'
8	30°18'00"	200.00'	54.15'
9	23°27'00"	200.00'	41.51'
10	59°30'00"	200.00'	114.31'
11	20°35'00"	200.00'	36.32'
12	21°27'00"	200.00'	37.88'
13	17°57'00"	300.00'	47.38'
14	32°25'00"	200.00'	58.14'
15	21°28'35"	175.00'	33.19'
16	20°46'14"	175.00'	32.07'

LEGEND

R-1A-5

ONE-FAMILY DWELLINGS  
MOUNTAIN RESORT 5 ACRE MIN.



MAP NO. 16.015

CHANGE OF OFFICIAL ZONING PLAN  
IDYLLWILD  
DISTRICT

CHANGE OF ZONE CASE NO. 7215  
AMENDING ORDINANCE NO. 348  
ADOPTED BY ORDINANCE NO. 348.4527  
DATE: SEPTEMBER 18, 2007  
RIVERSIDE COUNTY BOARD OF SUPERVISORS

APN: 561-210-004

C:\MSL\28-04-001\DWG\ZONE-CHG-FINAL.DWG