

**SUBMITTAL TO THE BOARD OF SUPERVISORS
COUNTY OF RIVERSIDE, STATE OF CALIFORNIA**

344B



FROM: TLMA – Planning Department

SUBMITTAL DATE:
September 26, 2007

SUBJECT: RIVERSIDE COUNTY OFF-HIGHWAY VEHICLE (OHV) COMMISSION STATUS REPORT

RECOMMENDED MOTION: RECEIVE and FILE.

BACKGROUND: On November 22, 2005 (agenda item 3.23), the Board of Supervisors directed the Planning Department and County Counsel to return with a resolution establishing a Riverside County Off-Highway Vehicle (OHV) Commission, consistent with Resolution No. 2005-148. On March 21, 2006 (agenda item 3.24), Resolution No. 2006-101 establishing the Riverside County Off-Highway Vehicle Commission was approved by the Board of Supervisors.

Departmental Concurrence

The Board of Supervisors established that the Commission work with the Planning Department and other stakeholders in the performance of its duties and, in accordance with Resolution No. 2005-148. The purposes of the Commission include: the identification of candidate sites for off-highway vehicle parks, providing input on related site acquisition issues, assessing the extent and range of use for candidate sites and providing guidance to county staff and decision-makers regarding public outreach for educational and informational purposes, the Commission would report back to the Board of Supervisors on its progress and recommendations.

Mark J. Balys

Mark Balys, Deputy Planning Director
signing for Ron Goldman, Planning Department Director

FINANCIAL DATA	Current F.Y. Total Cost:	\$ 0	In Current Year Budget:	No
	Current F.Y. Net County Cost:	\$ 0	Budget Adjustment:	No
	Annual Net County Cost:	\$ 0	For Fiscal Year:	\$ 0

SOURCE OF FUNDS:	Positions To Be Deleted Per A-30	<input type="checkbox"/>
	Requires 4/5 Vote	<input type="checkbox"/>

C.E.O. RECOMMENDATION: APPROVE

BY: *Tina Grande*
Tina Grande

County Executive Office Signature

Dept
Recomm.: Policy

Per Exec.
Ofc.: Policy

Consent

Consent

Prev. Agn. Ref.: 3.24 of 3/21/2006 | District: All | Agenda Number:

2.45

RECEIVED RIVERSIDE COUNTY
CLERK / BOARD OF SUPERVISORS
2007 SEP 28 AM 10:38

EXECUTIVE
OFFICE
07 SEP 27 AM 10:35
COUNTY OF RIVERSIDE

5-11-07



Riverside County Off-Highway Vehicle Commission

Update to the
Board of Supervisors
October 2, 2007

Overview

- Commission organization
- Goals
- Planning Phases
- Phase I
- Funding
- Varying OHV recreational opportunities
- Summary



Commission Organization

- First meeting Nov 2006 – subsequent meetings have been held on the 3rd Thursday of every month
- Five members appointed by the Board of Supervisors
 - Frank Heyming – 1st District
 - Larry Riddle – 2nd District
 - Anthony Migliore – 3rd District
 - Chairman**
 - Brian Nestande – 4th District
 - Meg Grossglass – 5th District
 - Vice Chair**



Goals

To provide Riverside county families with safe and legal OHV riding areas that also enhance their appreciation of the natural environment.

To increase environmental protection throughout the County by developing OHV parks that are sensitively designed to protect sensitive habitats and ecosystems.



To decrease the habitat damage currently occurring because of the proliferation of illegal trails and tracks.

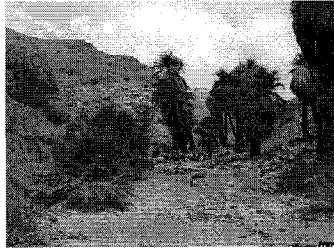
Provide precision OHV planning to give Riverside County families the ability to recreate together and teach their children to appreciate and respect the natural environment

To create multiple OHV parks and in the process create more open space for the resident of this county.

Purpose of Commission

- Identification of sites for off-highway vehicle parks, provide input on related site issues
- Assess the extent and range of use for candidate sites

- Provide guidance to county staff and decision-makers regarding outreach for education and information on off-highway vehicle use.



Planning Phases

- **Phase I**
 - Identify types of landholders
 - Identify park requirements
 - Review/visit existing parks
- **Phase II**
 - Identify up to ten locations
 - Refine selections
 - Visit sites
- **Phase III**
 - Reduce list of prospective sites
 - Refine site requirements
- **Phase IV**
 - Report out to BOS
- **Phase V**
 - Continue to select new park locations
 - Review private park projects



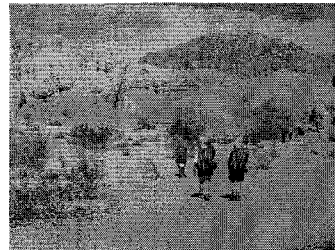
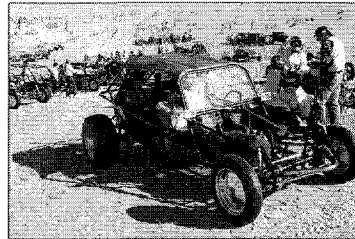
Phase I

- Past Presentations

- **Mark Balys** –Riverside County Planning Department
- **Ken Graff**, Regional Conservation Agency
- **Dana Bell**, National Off-Highway Vehicle Conservation Council
- **Mona Daniels**, Bureau of Land Management (BLM).
- **John Ladley**, San Bernardino Nation Forest, San Jacinto Ranger District, Idyllwild Ranger Station.
- **Daphne C. Greene**, California Off-Highway Motor Vehicular Recreation Commission
- **Paul Frandsen**, Regional Park & Open-Space District
- **Marc Brewer**, Regional Park and Open Space District
- **Darcy Kuenzi**, Fifth Supervisorial District

Phase 1 (cont.)

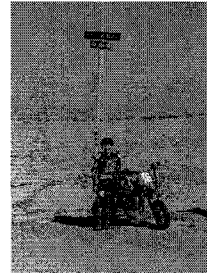
- Site visits conducted with Bureau of Land Management
 - Fargo Canyon Road off Dillon Road
 - Red Cloud Road / Summit Road
 - BLM OHV area – Drop 31
- Review previous site issues
 - De Anza Cycle Park
 - Laborde Canyon
- Review & identify lands for acquisition



Phase I (cont).

Acquisition of Park Land

- Private land ventures
- Shared or managed land/BLM/Forest Service/State land
- Riverside County can acquire land through:
 - Open space fees
 - Mitigate land through development
 - Land currently owned by the county
 - Purchase land



Funding Green Sticker Money

The State of California has given Riverside County monies for OHV recreation and related issues (law enforcement and education)



Between 2000- 2006
Riverside County received
\$354,000 from the state

Between 2003-2006
Riverside County received
\$289,000 in grant funds.
These funds have been
spent on law enforcement
activities.

(Riverside County Sheriffs ROVE program)

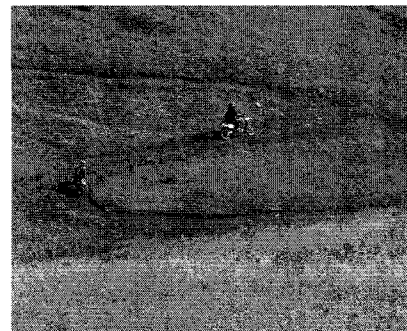
Park Design Considerations

- Engineering
- Education



Park Design Considerations

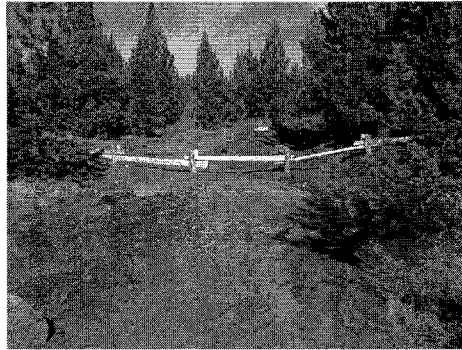
- Enforcement
- Evaluation





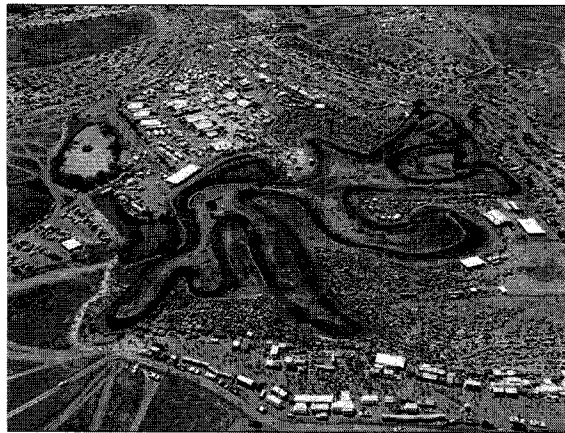
If the engineering is poor and the education is lacking,

We will have enforcement problems and resource impacts



Varying Off-Highway Vehicle Recreation Opportunities

Motocross Track



Hangtown Classic National Motocross Race May - 20, 2007

- This type of motorcycle race venue is readily available throughout our county.
 - This type of venue is not conducive to family recreation.

Rock Crawling Jeep



- Both of these types of motorized recreation occur on very rocky surfaces and at slow speeds



Trials Motorcycle

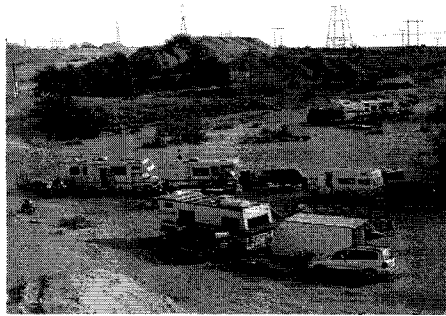


- Trials motorcycles do not have a seat and they run very low tire pressure to enable the bike to grip the surface it is driving on.

Trail Riding Area



Opportunities for all types of riding experiences are needed within the County



Summary

- We would like to thank the Supervisors for this opportunity.
- The Commissioners would also like to thank planning staff for all of their support.
- We look forward to continued progress and hope our next report includes options for the county to provide the resident of Riverside with a greatly needed OHV facility.
- Anticipating the development of one or more OHV parks, we would like to ask the Supervisors to consider establishing a funding source to acquire the necessary land.

