

447A

**SUBMITTAL TO THE BOARD OF SUPERVISORS  
COUNTY OF RIVERSIDE, STATE OF CALIFORNIA**



**FROM:** County Counsel  
**SUBJECT:** Ordinance No. 348.4535

**SUBMITTAL DATE:** October 4, 2007

**RECOMMENDED MOTION:** That the Board of Supervisors adopt Ordinance No. 348.4535 amending the zoning in the Antelope Valley Area shown on Map No. 2.2247 Change of Zone Case No. 7212.

**BACKGROUND:** Change of Zone Case No. 7212 was approved by the Board of Supervisors on September 18, 2007.

*Joe Rank*  
\_\_\_\_\_  
JOE RANK  
County Counsel

*David Huff* for  
\_\_\_\_\_  
David Huff for

**C.E.O. RECOMMENDATION:**

**APPROVE**

BY *Tina Grande*  
\_\_\_\_\_  
Tina Grande

County Executive Office Signature

Policy

Consent

Department Recommendation:  
Per Executive Office:

Prev. Agn. ref.

Dist. THIRD

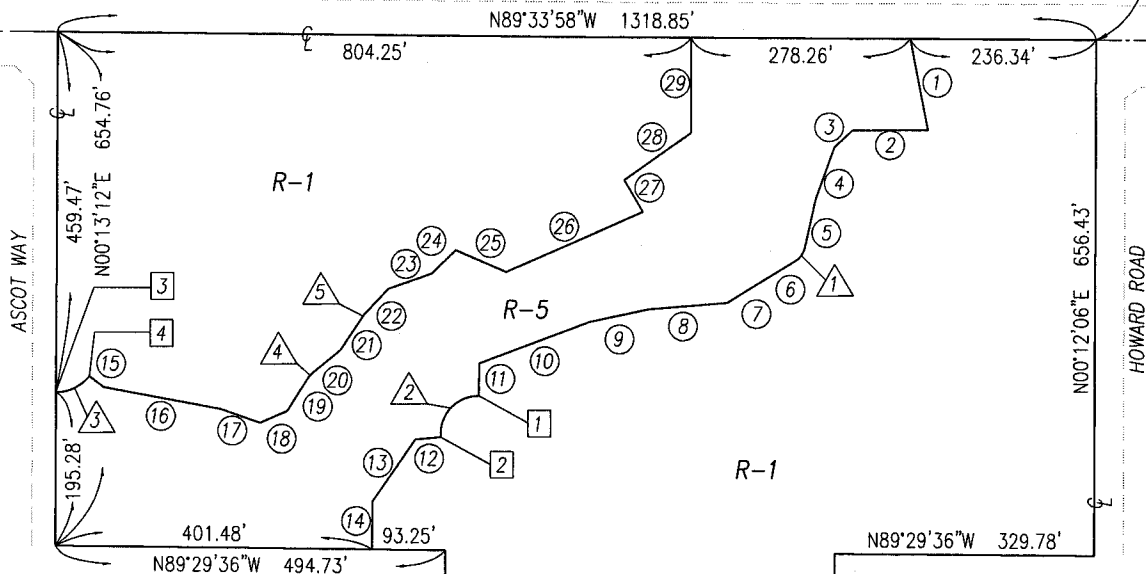
AGENDA NO.

2.18



ANTELOPE VALLEY AREA  
SECTION 15, TOWNSHIP 6 SOUTH, RANGE 3 WEST  
WICKERD ROAD

C. 1/4 COR  
SEC. 15



BEARING	DIST.
① N10°55'26"W	117.93'
② N90°00'00"E	95.76'
③ N46°25'55"E	31.55'
④ N19°54'29"E	69.29'
⑤ N12°32'38"E	65.76'
⑥ N58°46'03"E	46.92'
⑦ N58°12'13"E	55.57'
⑧ N85°08'41"E	100.06'
⑨ N77°59'09"E	76.83'
⑩ N69°18'12"E	149.86'
⑪ N00°30'24"E	41.13'
⑫ N84°30'12"E	32.89'
⑬ N34°26'42"E	95.93'
⑭ N00°30'24"E	61.03'
⑮ N52°34'50"W	23.10'
⑯ N79°33'36"W	150.42'
⑰ N70°17'22"W	53.03'
⑱ N66°18'31"E	37.63'
⑲ N32°11'12"E	50.40'
⑳ N50°31'14"E	46.03'
㉑ N33°10'00"E	50.42'
㉒ N42°31'27"E	45.47'
㉓ N70°43'27"E	58.04'
㉔ N45°34'02"E	43.55'
㉕ N66°35'48"W	69.94'
㉖ N66°17'11"E	189.29'
㉗ N29°21'17"W	47.59'
㉘ N54°48'11"E	103.91'
㉙ N00°00'00"E	120.89'

RADIAL BEARING
① N00°30'24"E
② N84°30'12"E
③ N00°13'12"E
④ N52°34'50"W

CENTRAL ANGLE	RADIUS	ARC LENGTH
① 46°13'25"	23.80'	19.20'
② 96°00'12"	48.00'	80.43'
③ 52°48'02"	53.00'	48.84'
④ 18°20'02"	23.80'	7.62'
⑤ 9°21'27"	23.80'	3.89'

LEGEND

- R-1 ONE-FAMILY DWELLINGS
- R-5 OPEN AREA COMBINING ZONE-RESIDENTIAL DEVELOPMENTS

MAP NO: 2.2247  
CHANGE OF OFFICIAL ZONING PLAN  
AMMENDING  
MAP No. 2, ORDINANCE No. 348  
CHANGE OF ZONE CASE No. 7212  
ADOPTED BY ORDINANCE No. 348.4535  
DATED: OCTOBER 16th, 2007

RIVERSIDE COUNTY BOARD OF SUPERVISORS

