

SUBMITTAL TO THE BOARD OF SUPERVISORS
COUNTY OF RIVERSIDE, STATE OF CALIFORNIA

715 A



FROM: County Counsel
SUBJECT: Ordinance No. 348.4541

SUBMITTAL DATE: October 17, 2007

RECOMMENDED MOTION: That the Board of Supervisors adopt Ordinance No. 348.4541 amending the zoning in the Antelope Valley Area shown on Map No. 2.2251 Change of Zone Case No. 6764.

BACKGROUND: Change of Zone Case No. 6764 was tentatively approved by the Board of Supervisors on April 10, 2007.

Minh Tran 10/29/07

JOE RANK Minh C. Tran
County Counsel

C.E.O. RECOMMENDATION:

APPROVE

BY *Tina Grande*

Tina Grande

County Executive Office Signature

Policy

Consent

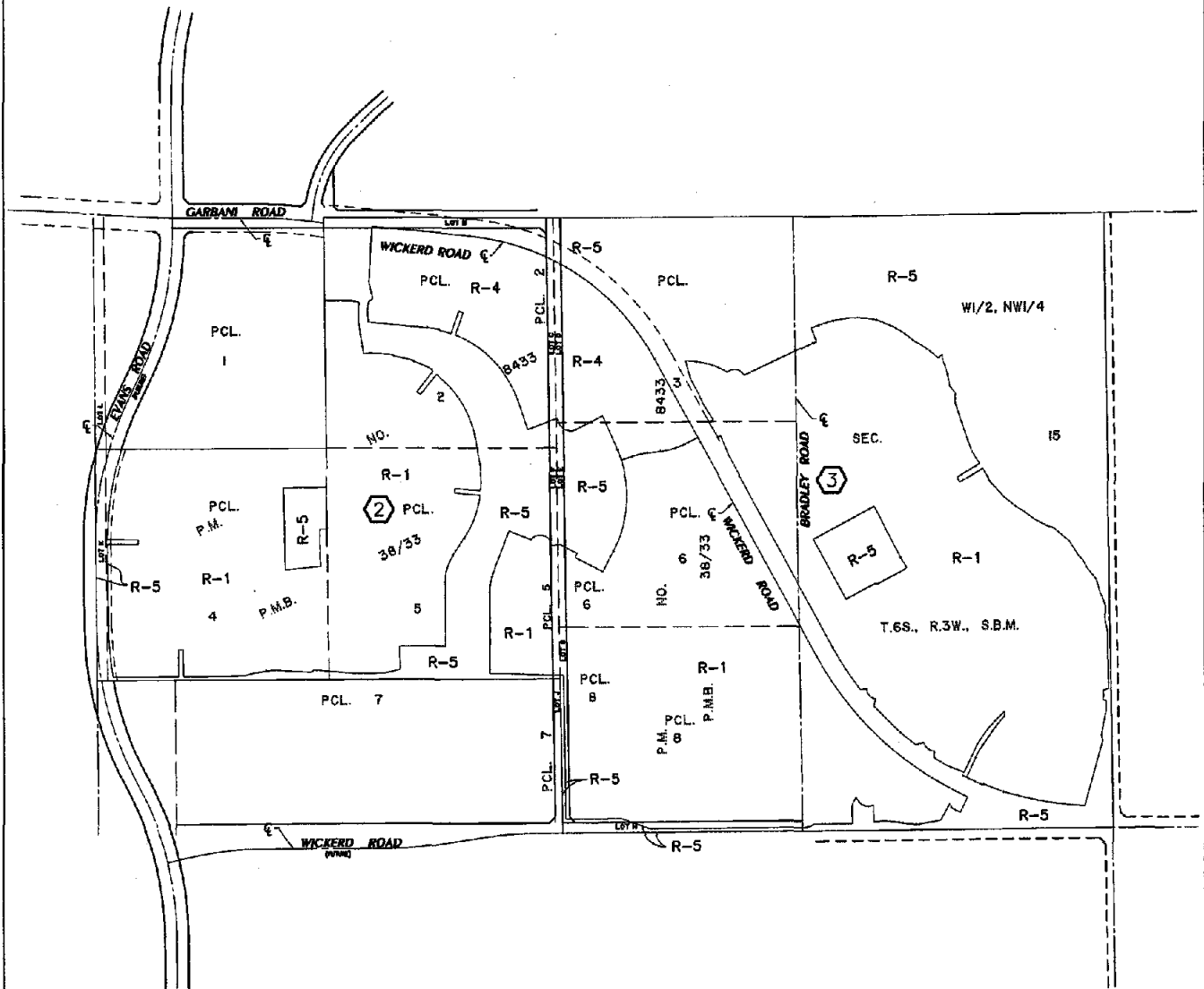
Department Recommendation:
Per Executive Office:

Prev. Agn. ref.

Dist. THIRD

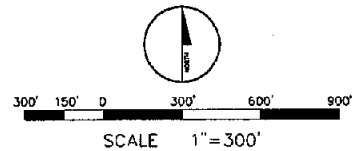
AGENDA NO.

ANTELOPE VALLEY AREA
 SECTIONS 15 AND 16, T.6.S., R.3.W., S.B.M.



LEGEND

- R-1 ONE - FAMILY DWELLINGS
- R-4 PLANNED RESIDENTIAL
- R-5 OPEN AREA COMBINING ZONE - RESIDENTIAL DEVELOPMENTS
- 2 SHEET NUMBER

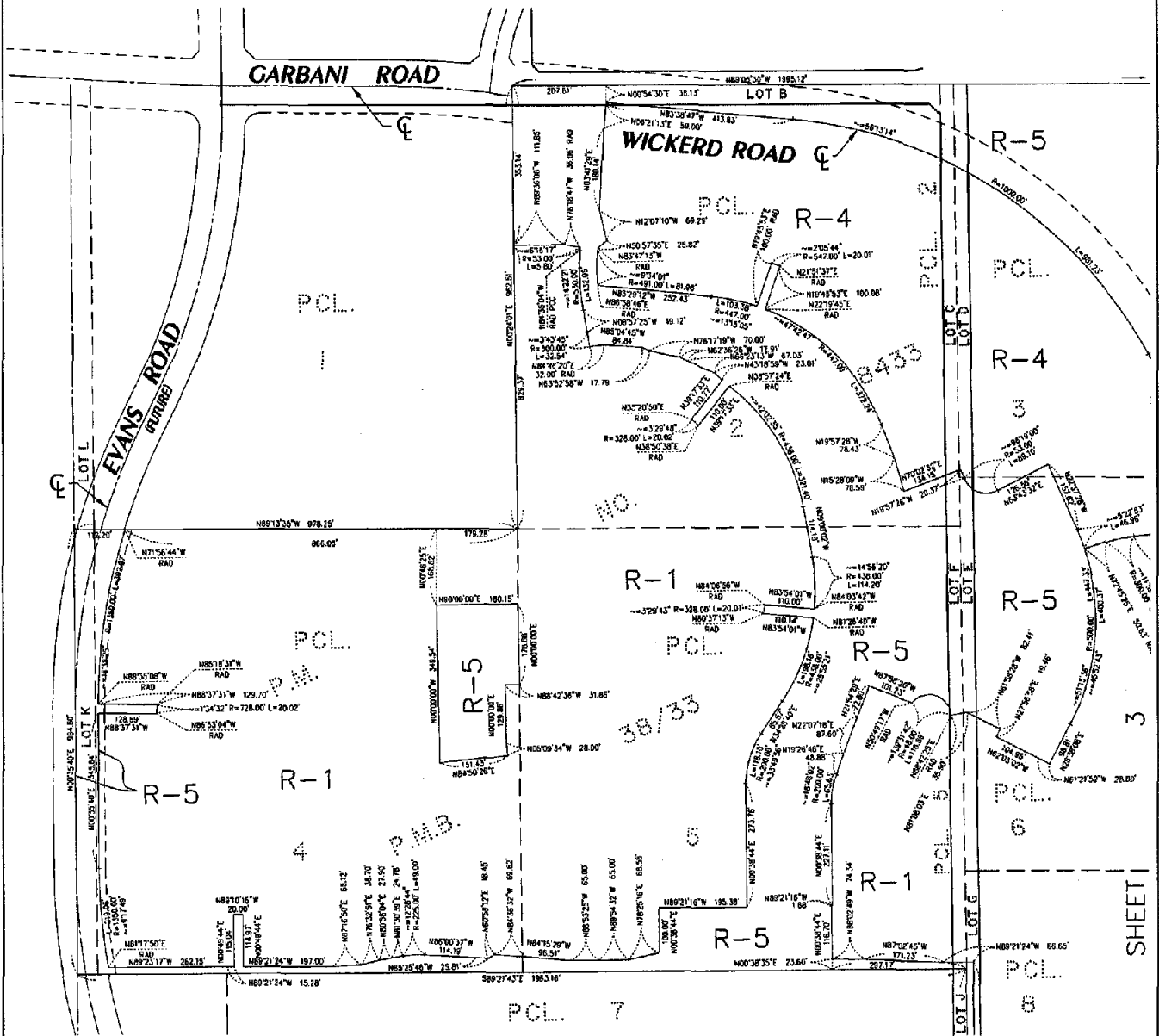


MAP NO. 2.2251
 CHANGE OF OFFICIAL ZONING PLAN
 AMENDING
 MAP NO. 2, ORDINANCE NO. 348
 CHANGE OF ZONE CASE NO. 6764
 ADOPTED BY ORDINANCE NO. 348.4541
 NOVEMBER 6, 2007
 RIVERSIDE COUNTY BOARD OF SUPERVISORS

ASSESSOR'S PARCEL NO.'S
 360-300-002, 360-300-003, 360-300-004, 360-300-005,
 360-300-006, 360-300-008 AND 360-350-001

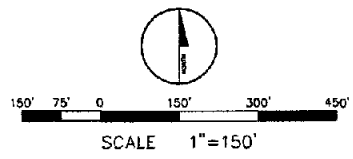
ANTELOPE VALLEY AREA

SECTIONS 15 AND 16, T.6.S., R.3.W., S.B.M.



LEGEND

- R-1 ONE - FAMILY DWELLINGS
- R-4 PLANNED RESIDENTIAL
- R-5 OPEN AREA COMBINING
 ZONE - RESIDENTIAL DEVELOPMENTS



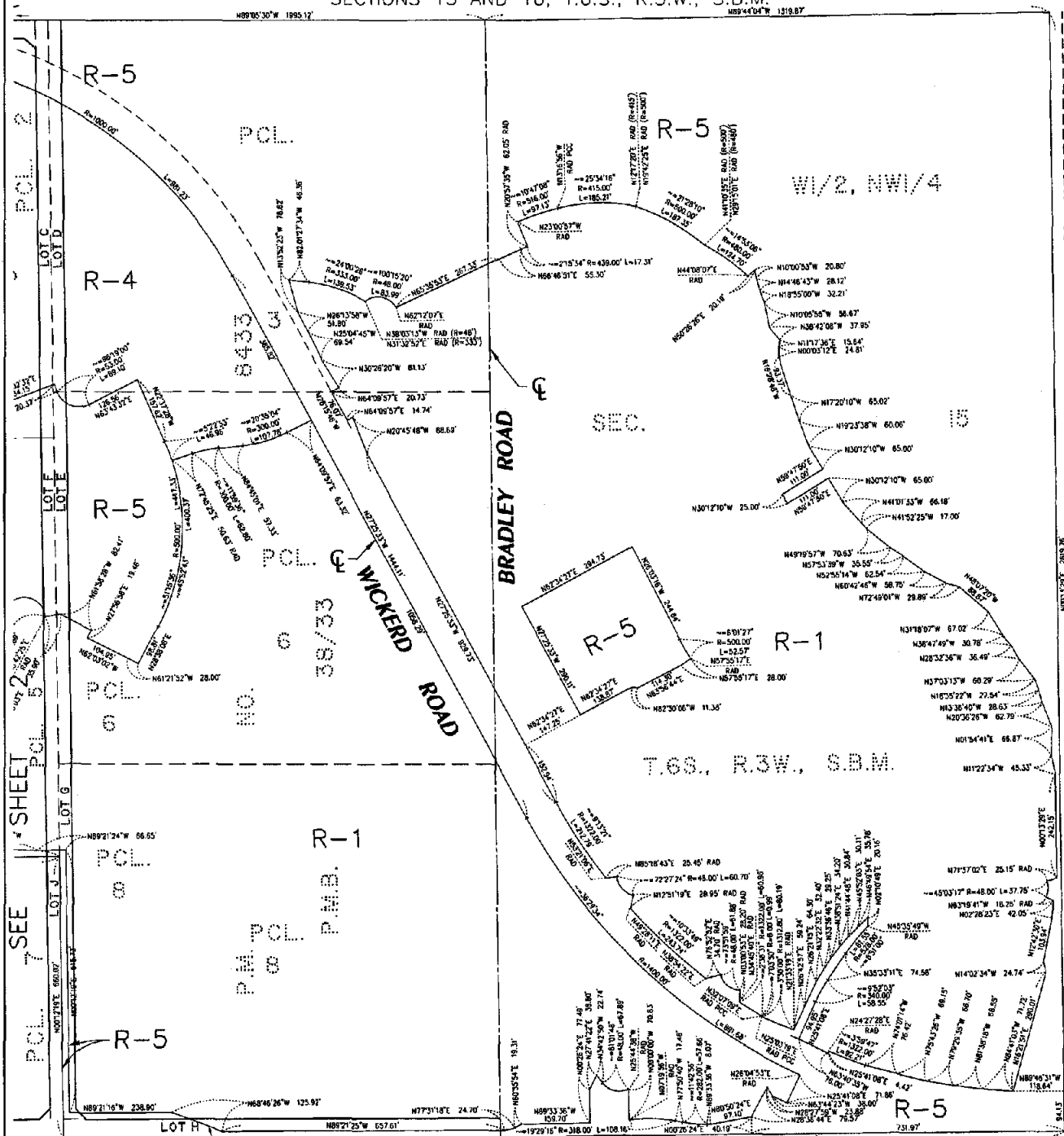
MAP NO. 2.2251
 CHANGE OF OFFICIAL ZONING PLAN
 AMENDING
 MAP NO. 2, ORDINANCE NO. 348
 CHANGE OF ZONE CASE NO. 6764
 ADOPTED BY ORDINANCE NO. 348.4541
 NOVEMBER 6, 2007
 RIVERSIDE COUNTY BOARD OF SUPERVISORS

SEE SHEET

ASSESSOR'S PARCEL NO.'S
 360-300-002, 360-300-003, 360-300-004, 360-300-005,
 360-300-006, 360-300-008 AND 360-350-001

ANTELOPE VALLEY AREA

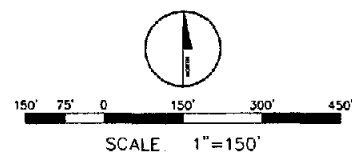
SECTIONS 15 AND 16, T.6.S., R.3.W., S.B.M.



LEGEND

- R-1 ONE - FAMILY DWELLINGS
- R-4 PLANNED RESIDENTIAL
- R-5 OPEN AREA COMBINING ZONE - RESIDENTIAL DEVELOPMENTS

MAP NO. 2.2251
**CHANGE OF OFFICIAL ZONING PLAN
 AMENDING**
 MAP NO. 2, ORDINANCE NO. 348
 CHANGE OF ZONE CASE NO. 6764
 ADOPTED BY ORDINANCE NO. 348.4541
 NOVEMBER 6, 2007
 RIVERSIDE COUNTY BOARD OF SUPERVISORS



ASSESSOR'S PARCEL NO.'S
 360-300-002, 360-300-003, 360-300-004, 360-300-005,
 360-300-006, 360-300-008 AND 360-350-001