

SUBMITTAL TO THE BOARD OF SUPERVISORS
COUNTY OF RIVERSIDE, STATE OF CALIFORNIA

136A

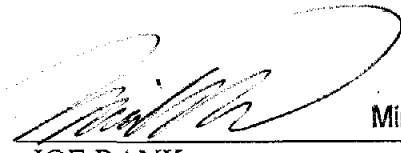


FROM: County Counsel
SUBJECT: Ordinance No. 348.4553

SUBMITTAL DATE: November 15, 2007

RECOMMENDED MOTION: That the Board of Supervisors adopt Ordinance No. 348.4553 amending the zoning in the Bermuda Dunes District shown on Map No. 30.092 Change of Zone Case No. 6869.

BACKGROUND: Change of Zone Case No. 6869 was tentatively approved by the Board of Supervisors on March 29, 2005.


Minh C. Tran
JOE RANK
County Counsel

C.E.O. RECOMMENDATION:

APPROVE

BY 
Tina Grande

County Executive Office Signature

Policy
 Policy

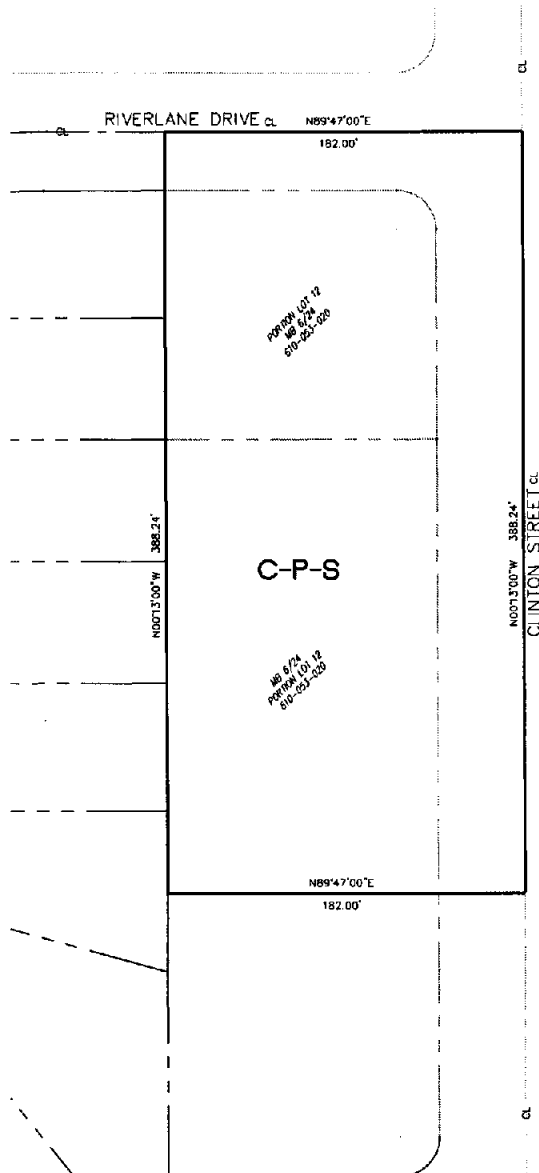
Consent
 Consent

Department Recommendation:
Per Executive Office:

Prev. Agn. ref.

Dist. FOURTH

AGENDA NO.



C-P-S

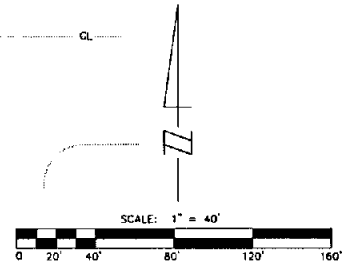
610 6174
PORTWAY LOT 12
610-053-020

PORTWAY LOT 12
610 6174
610-053-020

C-P-S

SCENIC HIGHWAY COMMERCIAL

LEGEND



CHANGE OF OFFICIAL ZONING PLAN

MAP NO. 30.088
 BERMUDA DUNES DISTRICT
 CHANGE OF ZONE NO. 6869
 AMENDING ORDINANCE NO. 348
 ADOPTED BY ORDINANCE NO. 348.4410
 ON DECEMBER 4, 2007
 RIVERSIDE COUNTY BOARD OF SUPERVISORS