

SUBMITTAL TO THE BOARD OF SUPERVISORS
COUNTY OF RIVERSIDE, STATE OF CALIFORNIA

392 A



FROM: County Counsel
SUBJECT: Ordinance No. 348.4542

SUBMITTAL DATE: October 24, 2007

RECOMMENDED MOTION: That the Board of Supervisors adopt Ordinance No. 348.4542 amending the zoning in the Rubidoux District shown on Map No. 15.053 Change of Zone Case No. 6921.

BACKGROUND: Change of Zone Case No. 6921 was tentatively approved by the Board of Supervisors on October 2, 2007.

Michelle Clark for

JOE RANK Michelle Clark
County Counsel

C.E.O. RECOMMENDATION:

APPROVE

BY: *Tina Grande*

Tina Grande

County Executive Office Signature

Policy

Consent

Department Recommendation:
Per Executive Office:

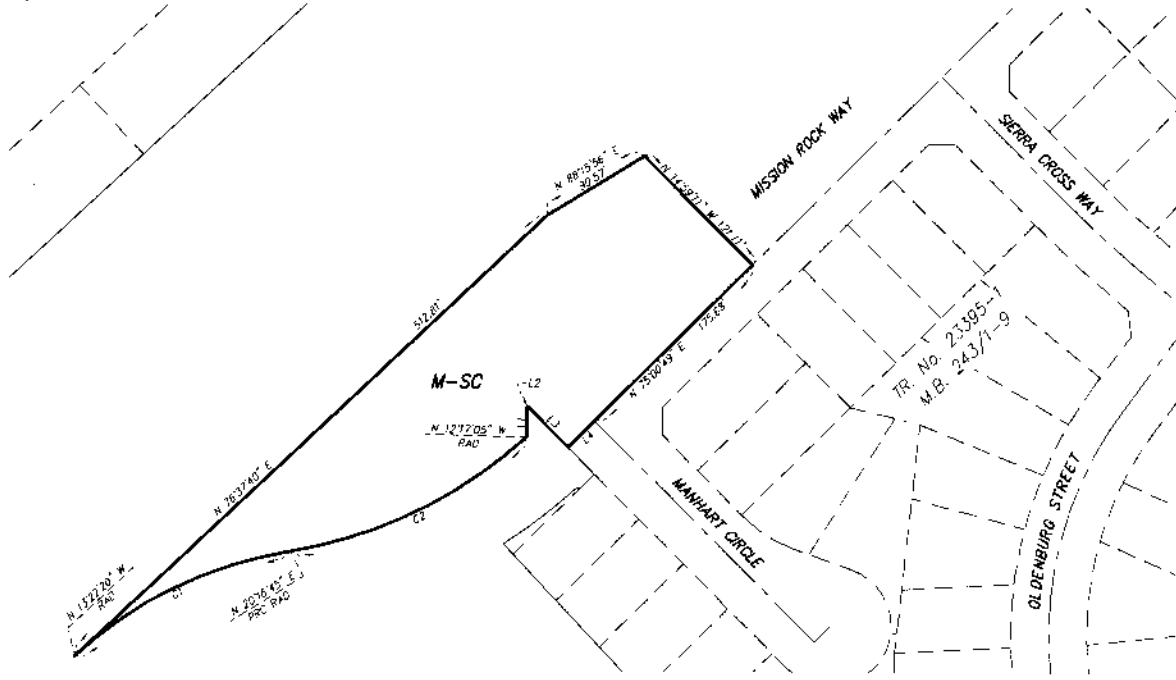
Prev. Agn. ref.

Dist. SECOND

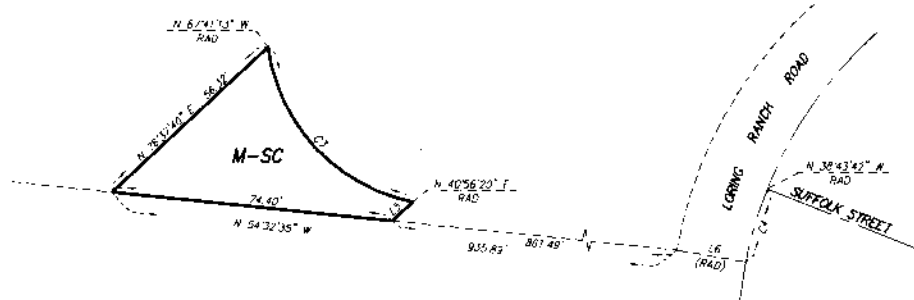
AGENDA NO.



SEC. 15, 18, 21, 22, T.2 S., R.5 W., S.B.B. & W.



DETAIL "A"
SCALE 1"=60'



DETAIL "B"
SCALE 1"=20'

CURVE	BEARING	RADIUS	LENGTH	TAN
C1	113°39'00"	328.00	192.84	89.19
C2	32°33'50"	372.00	211.43	108.65
C3	71°22'22"	48.00	59.79	34.68
C4	114°51'12"	1087.00	725.34	352.81

LINE	BEARING	LENGTH
L1	N29°57'48"E	71.45
L2	N75°10'49"E	7.14
L3	N14°59'06"W	45.01
L4	N74°59'20"E	30.00
L5	N8°32'40"E	7.34
L6	N50°28'36"W	33.00

LEGEND

M-SC MANUFACTURING SERVICE COMMERCIAL

MAP No. 15.053

**CHANGE OF OFFICIAL ZONING PLAN
RUBIDOUX DISTRICT**

CHANGE OF ZONE CASE No. 06921

AMENDING ORDINANCE No. 348

ADOPTED BY ORDINANCE No. 348.4542

DECEMBER 18, 2007

RIVERSIDE COUNTY BOARD OF SUPERVISORS

ASSESSOR'S PARCEL NUMBER'S

181-220-039
181-370-001

