

SUBMITTAL TO THE BOARD OF SUPERVISORS
COUNTY OF RIVERSIDE, STATE OF CALIFORNIA

658A



FROM: County Counsel

SUBMITTAL DATE: January 8, 2008

SUBJECT: Ordinance No. 348.4563

RECOMMENDED MOTION: That the Board of Supervisors adopt Ordinance No. 348.4563 amending the zoning in the Winchester Area shown on Map No. 2.2264 Change of Zone Case No. 7521.

BACKGROUND: Change of Zone Case No. 7521 was tentatively approved by the Board of Supervisors on July 31, 2007.

JOE RANK

County Counsel

DAVID H. K. HUFF

C.E.O. RECOMMENDATION:

APPROVE

BY

Tina Grande

County Executive Office Signature

Policy

Consent

Department Recommendation:
Per Executive Office:

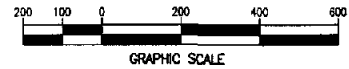
Prev. Agn. ref.

Dist. THIRD

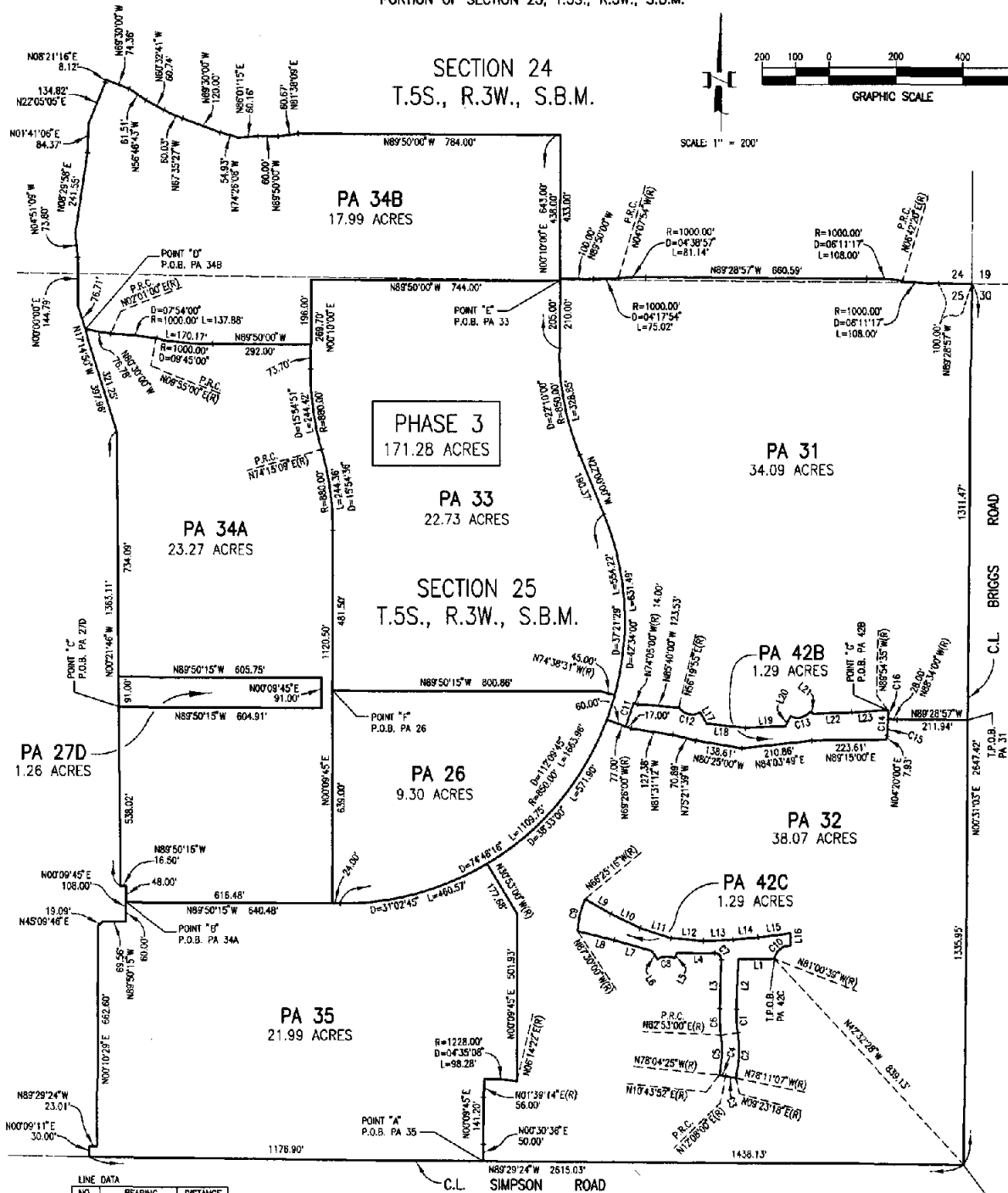
AGENDA NO.

WINCHESTER AREA
 PORTION OF SECTION 24, T.5S., R.3W., S.B.M.
 PORTION OF SECTION 25, T.5S., R.3W., S.B.M.

SECTION 24
 T.5S., R.3W., S.B.M.



SCALE: 1" = 200'



LINE DATA

NO.	BEARING	DISTANCE
L1	N80°00'00"E	108.64'
L2	N02°00'00"E	150.91'
L3	N02°00'00"E	146.50'
L4	N89°50'15"W	113.00'
L5	N27°47'05"E(R)	17.67'
L6	N34°00'00"W(R)	30.22'
L7	N73°56'57"W	117.57'
L8	N75°45'00"W	113.18'
L9	N59°50'00"W	89.26'
L10	N63°36'24"W	97.39'
L11	N71°27'37"W	97.39'
L12	N85°10'31"W	97.69'
L13	N87°50'36"E	87.99'
L14	N84°37'39"E	75.03'
L15	N83°06'00"E	97.67'
L16	N00°00'00"W(R)	36.85'
L17	N29°20'00"W(R)	38.83'
L18	N83°36'00"W	117.37'
L19	N87°27'00"E	120.00'
L20	N26°00'00"E(R)	32.83'
L21	N51°40'00"W(R)	12.10'
L22	N87°27'00"E	114.59'
L23	N87°02'00"E	108.47'

LEGEND
 SP ZONE - SPECIFIC PLAN (SP 301)

MAP NO. 2.2264

CHANGE OF OFFICIAL ZONING PLAN
 AMENDING
 MAP NO. 2 ORDINANCE NO. 348

CHANGE OF ZONE CASE NO. 7521
 ADOPTED BY ORDINANCE NO. 348.553
 DATE: JANUARY 15, 2008

RIVERSIDE COUNTY BOARD OF SUPERVISORS

CURVE DATA

NO.	RADIUS	DELTA	ARC
C1	450.00'	09°07'00"	71.60'
C2	415.00'	18°55'53"	137.12'
C3	672.00'	02°44'42"	32.20'
C4	728.00'	01°24'08"	17.82'
C5	365.00'	19°02'35"	121.31'
C6	500.00'	08°07'00"	79.58'
C7	20.00'	91°50'15"	32.08'
C8	48.00'	61°47'04"	51.76'
C9	272.00'	21°04'44"	100.07'
C10	48.00'	81°00'39"	67.81'
C11	910.00'	04°39'00"	73.85'
C12	48.00'	85°33'55"	71.77'
C13	48.00'	77°43'00"	65.07'
C14	1672.00'	04°14'35"	79.30'
C15	1672.00'	02°54'00"	54.28'
C16	1672.00'	01°20'35"	25.13'