

SUBMITTAL TO THE BOARD OF SUPERVISORS  
COUNTY OF RIVERSIDE, STATE OF CALIFORNIA

202B




FROM: County Counsel

SUBMITTAL DATE: January 14, 2008

SUBJECT: Ordinance No. 348.4568

**RECOMMENDED MOTION:** That the Board of Supervisors adopt Ordinance No. 348.4568 amending the zoning in the Prado-Mira Loma District shown on Map No. 38.134 Change of Zone Case No. 7480.

**BACKGROUND:** Change of Zone Case No. 7480 was tentatively approved by the Board of Supervisors on November 27, 2007.

  
\_\_\_\_\_  
JOE RANK  
County Counsel  
Larisa R-McKenna

C.E.O. RECOMMENDATION:

APPROVE

BY   
Tina Grande

County Executive Office Signature

Policy  
 Policy

Consent  
 Consent

Department Recommendation:  
Per Executive Office:

Prev. Agn. ref.

Dist. SECOND

AGENDA NO.

ORDINANCE NO. 348.4568

AN ORDINANCE OF THE COUNTY OF RIVERSIDE  
AMENDING ORDINANCE NO. 348 RELATING TO ZONING

The Board of Supervisors of the County of Riverside Ordains as Follows:

Section 1. Section 4.1 of Ordinance No. 348, and Prado-Mira Loma District Zoning Plan Map No. 38. as amended, are further amended by placing in effect in the zone or zones as shown on the map entitled "Change of Official Zoning Plan, Prado-Mira Loma District, Map No. 38.134 Change of Zone Case No. 7480," which map is made a part of this ordinance.

Section 2. This ordinance shall take effect 30 days after its adoption.

BOARD OF SUPERVISORS OF THE COUNTY  
OF RIVERSIDE, STATE OF CALIFORNIA

By: \_\_\_\_\_  
Chairman, Board of Supervisors

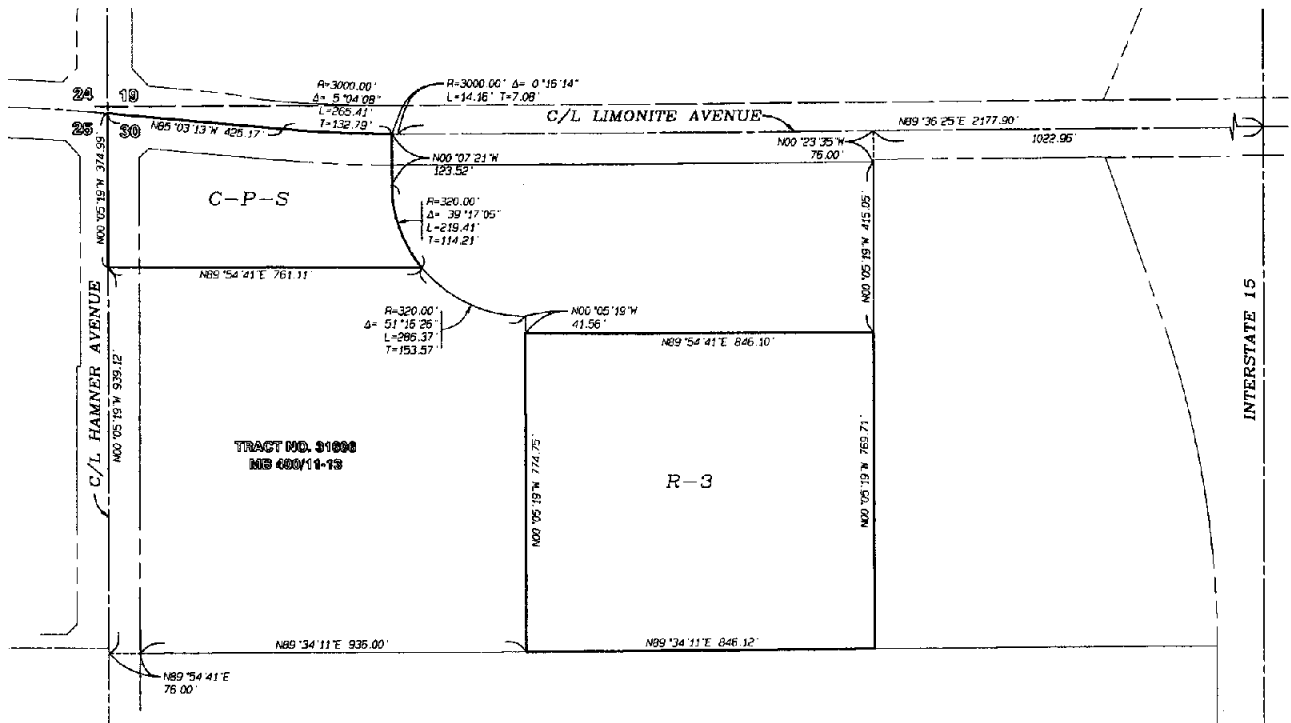
ATTEST:

CLERK OF THE BOARD:

By: \_\_\_\_\_  
Deputy

(SEAL)

SEC. 30, T.2S., R.6W. S.B.M.



LEGEND

- R-3 GENERAL RESIDENTIAL
- C-P-S SCENIC HIGHWAY COMMERCIAL

MAP NO. 38.134

CHANGE OF OFFICIAL ZONING PLAN  
PRADO - MIRA LOMA  
DISTRICT

CHANGE OF ZONE CASE NO. 07480  
AMENDING ORDINANCE NO. 348  
ADOPTED BY ORDINANCE NO. 348.4568  
ADOPTION DATE: **MARCH 11, 2008**  
RIVERSIDE COUNTY BOARD OF SUPERVISORS

