

**SUBMITTAL TO THE BOARD OF SUPERVISORS
COUNTY OF RIVERSIDE, STATE OF CALIFORNIA**

425



FROM: Economic Development Agency

SUBMITTAL DATE:
February 7, 2008

SUBJECT: Approval of Plans and Specifications for the Indio Hills Community Center Project

RECOMMENDED MOTION: That the Board of Supervisors:

1. Approve the Plans and Specifications for the construction of the Indio Hills Community Center Project; and
2. Authorize the Clerk of the Board to advertise the Notice of Inviting Bids for the Project.

BACKGROUND: On November 8, 2005, the Board amended the CIP List to add the Indio Hills Community Center and approved the project. Subsequently on June 27, 2006 the Board approved the Agreement for Architectural Services with Integrated Infrastructures, Inc., for the design and engineering of the Project. The Project site is located at 80-400 Dillion Road within the unincorporated community of Indio Hills. The new facility will replace the existing structure that does not meet current building codes or ADA accessibility requirements. EDA has proposed the construction of a new 3,400 square foot facility on the existing 5 acre County owned site to better serve the needs of the community of Indio Hills.

(Continued on page 2).

Robin Zimpfer

RZ:DL:CAC:AR:JAT
G:\RDACOMDIS4\Indio Hills\BOS F11-Indio Hills.doc

Robin Zimpfer
Assistant County Executive Officer/EDA

FINANCIAL DATA	Current F.Y. Total Cost:	\$ 0	In Current Year Budget:	N/A
	Current F.Y. Net County Cost:	\$ 0	Budget Adjustment:	N/A
	Annual Net County Cost:	\$ 0	For Fiscal Year:	2007/08

COMPANION ITEM ON BOARD OF DIRECTORS AGENDA: No

SOURCE OF FUNDS: Palm Desert Financing Authority

Positions To Be Deleted Per A-30	<input type="checkbox"/>
Requires 4/5 Vote	<input type="checkbox"/>

C.E.O. RECOMMENDATION: APPROVE

BY: *Jennifer L. Sargent*
Jennifer L. Sargent

County Executive Office Signature

- Dep't Recomm.: Consent
- Per Exec. Ofc.: Consent
- Policy
- Policy

Prev. Agn. Ref.: Item 3.20, 11/08/05, and Item 3.19, 06/27/06

District: 4th

Agenda Number:

3.10
Form 11 (Rev 06/2003)

FORM APPROVED COUNTY COUNSEL
BY: *U.S. Victor* 03/14/08
DATE
MARSHAL VICTOR
Departmental Concurrence

BACKGROUND (continued): Funds to construct the community center will come from Palm Desert Financing Authority and will not impact the County's General Fund.

County Fire and Facilities Management have completed their plan check review and have approved the Plans. County Counsel has reviewed and approved the bid document, therefore, EDA staff recommends that the Board approve the Plans and Specifications for the Indio Hills Community Center and authorize the Clerk of the Board to advertise Notice of Inviting Bids.

Attached are copies of the elevations, site plan and floor plan for your information.

Attachements:

- Elevations
- Site Plan
- Floor Plan

Project Manual

Project

Indio Hills Community Center
80-400 Dillon Road
Indio Hills, California

Owner

County of Riverside
44-199 Monroe Street
Suite B
Indio, CA 92201

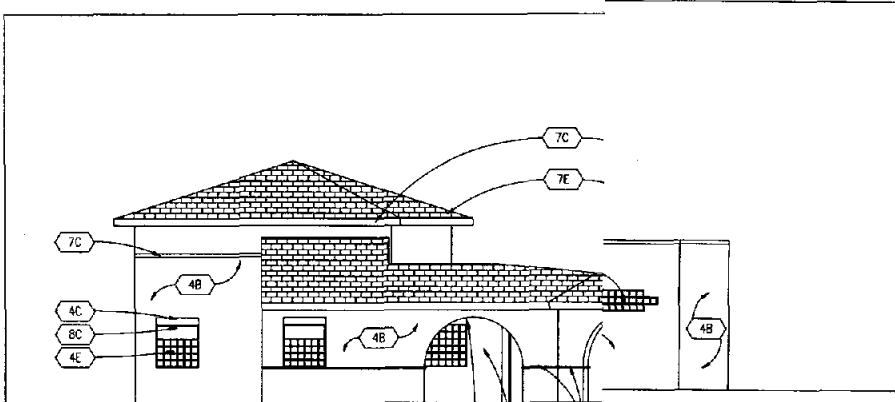
Architect

Integrated Infrastructures
1334 North Sultana Avenue
Ontario, CA 91764

November 2, 2007

FORM APPROVED COUNTY COUNSEL

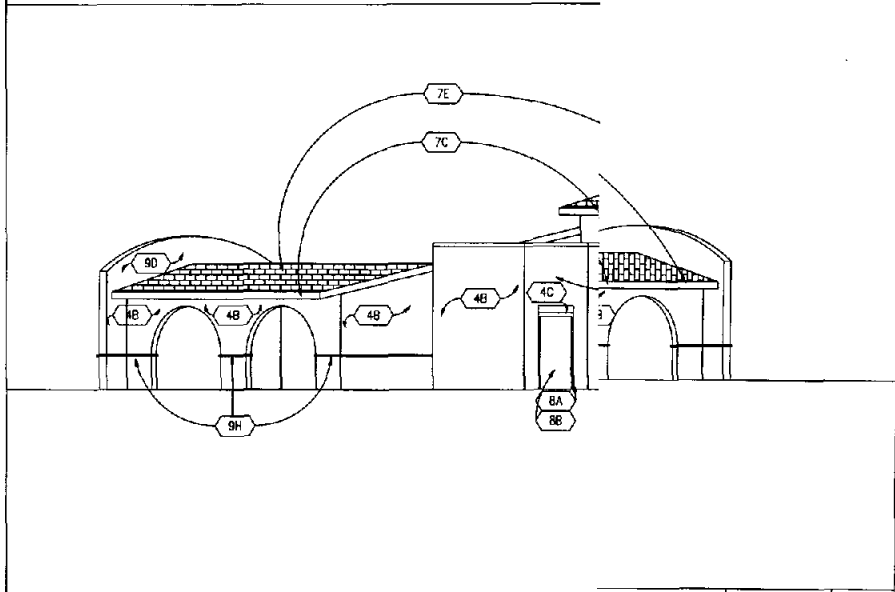
BY: HB Veer 03/14/08
MARSHAL VICTOR DATE



WEST ELEVATION

1/8"=1'-0"

1



EAST ELEVATION

1/8"=1'-0"

2

- | | |
|--|---|
| 1A EXPOSED STRUCTURE | 3A CHOPLET |
| 1B NOT PART OF THIS CONTRACT (N/C) | 3B CERAMIC TILE |
| 1C OPEN | 3C GIPSUM BOARD |
| 1D PROPERTY LINE | 3D PLASTER WALL FINISH TYPE I |
| 1E CENTER LINE OF STREET | 3E RESILIENT TILE FLOORING |
| 2A ASPHALTIC CONCRETE PAVING | 3F SUSPENDED ACOUSTICAL CEILING |
| 2B CONCRETE CURB | 3G TUPSET RUBBER GASK |
| 2C CONCRETE SIDEWALK | 3H EXTERIOR CERAMIC TILE |
| 2D CONCRETE STEPS | 10A 1-1/4" DIA. x 42" x 36" ORAB BAR |
| 2E LANDSCAPED AREA | 10B GLASS MIRROR |
| 2F TUBE STEEL FENCE | 10C SURFACE MOUNTED PAPER TOWEL DISPENSER |
| 2G TUBE STEEL GATE | 10D SURFACE MOUNTED SOAP DISPENSER |
| 2H 12" x 12" CATCH BASIN | 10E SURFACE MOUNTED TOILET TISSUE DISPENSER |
| 2I CONCRETE BENCH | 10F TOILET COMPARTMENT |
| 3A CONCRETE FLOOR SLAB | 10G ACCESSIBILITY ENTRY SIGN |
| 3B CONTROL JOINT | 10H ACCESSIBILITY DIRECTIONAL SIGN |
| 4A CONCRETE MASONRY UNIT, SMOOTH FACE, SAND BLASTED FINISH | 10I ACCESSIBLE PARKING SIGN |
| 4B CONCRETE MASONRY UNIT, SPLIT FACE, SAND BLASTED FINISH | 11A FIRE EXTINGUISHER CABINET |
| 4C CONCRETE MASONRY UNIT, LINTEL, SANDBLASTED FINISH | 11B RANGE HOOD |
| 4D CONCRETE MASONRY UNIT, SILL, SANDBLASTED FINISH | 11C RANGE |
| 4E GLASS BLOCK | 15A DRINKING FOUNTAIN |
| 5A METAL HANDRAIL | 15B FLOOR DRAIN |
| 5B STRUCTURAL FRAMING | 15C MECHANICAL EQUIPMENT |
| 6A CABINET | 15D OVERFLOW DRAIN |
| 6B COUNTER | 15E PLUMBING EQUIPMENT |
| 7A BUILT UP ROOFING | 15F ROOF DRAIN |
| 7B ROOF HATCH | 15G SINK |
| 7C SHEET METAL FLASHING | 18A ELECTRICAL EQUIPMENT |
| 7D SHEET METAL OUTTER | 18B LIGHT FIXTURE |
| 7E SYNTHETIC SLATE ROOF | |
| 8A METAL DOOR FRAME | |
| 8B SCHEDULED DOOR | |
| 8C SCHEDULED WINDOW | |

REFERENCE NOTES

15

3

Integrated Infrastructures Inc.

1034 North Salinas Avenue
 Indio, CA 92201
 Phone: (760) 468-1111
 Fax: (760) 468-8888
 Email: info@iinc.com



Alphahip
Indio Hills Community Center
 County of Riverside
 80-400 Dillon Road, Indio Hills, California

APPROVED

APPROVED

APPROVED

NO	DATE	BY	REMARKS

EXTERIOR ELEVATIONS

DRAWN _____
 CHECKED _____
 DATE --/--/--
 SCALE AS NOTED
 JOB NO. 06-125

A5-1

- 1A EXPOSED STRUCTURE
- 1B NOT PART OF THIS CONTRACT (N/C)
- 1C OPEN
- 1D PROPERTY LINE
- 1E CENTER LINE OF STREET

- 2A ASPHALTIC CONCRETE PAVING
- 2B CONCRETE CURB
- 2C CONCRETE SIDEWALK
- 2D CONCRETE STEPS
- 2E LANDSCAPED AREA
- 2F TUBE STEEL FENCE
- 2G TUBE STEEL GATE
- 2H 12" x 12" CATCH BASIN
- 2I CONCRETE BENCH

- 3A CONCRETE FLOOR SLAB
- 3B CONCRETE JOINT

- 4A CONCRETE MASONRY UNIT, SMOOTH FACE, SAND BLASTED FINISH
- 4B CONCRETE MASONRY UNIT, SPLIT FACE, SAND BLASTED FINISH
- 4C CONCRETE MASONRY UNIT, UNFILL, SANDBLASTED FINISH
- 4D CONCRETE MASONRY UNIT, SILL, SANDBLASTED FINISH
- 4E GLASS BLOCK

- 5A METAL HANDRAIL
- 5B STRUCTURAL FRAMING

- 6A CABINET
- 6B COUNTER

- 7A BUILT UP ROOFING
- 7B ROOF HATCH
- 7C SHEET METAL FLASHING
- 7D SHEET METAL CLUTTER
- 7E SYNTHETIC SLATE ROOF

- 8A METAL DOOR FRAME
- 8B SCHEDULED DOOR
- 8C SCHEDULED WINDOW

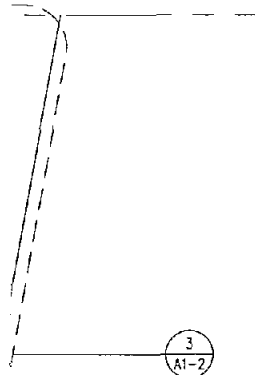
- 9A CARPET
- 9B CERAMIC TILE
- 9C GYPSUM BOARD
- 9D PLASTER WALL FINISH TYPE I
- 9E RESILIENT TILE FLOORING
- 9F SUSPENDED ACOUSTICAL CEILING
- 9G TOPSET RUBBER BASE
- 9H EXTERIOR CERAMIC TILE

- 10A 1-1/4" DIA. x 42" x 36" GRAB BAR
- 10B GLASS MIRROR
- 10C SURFACE MOUNTED PAPER TOWEL DISPENSER
- 10D SURFACE MOUNTED SOAP DISPENSER
- 10E SURFACE MOUNTED TOILET TISSUE DISPENSER
- 10F TOILET COMPARTMENT
- 10G ACCESSIBILITY ENTRY SIGN
- 10H ACCESSIBILITY DIRECTIONAL SIGN
- 10I ACCESSIBLE PARKING SIGN

- 11A FIRE EXTINGUISHER CABINET
- 11B RANGE HOOD
- 11C RANGE

- 15A DRINKING FOUNTAIN
- 15B FLOOR DRAIN
- 15C MECHANICAL EQUIPMENT
- 15D OVERFLOW DRAIN
- 15E PLUMBING EQUIPMENT
- 15F ROOF DRAIN
- 15G SINK

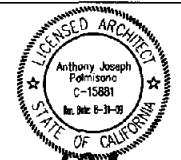
- 16A ELECTRICAL EQUIPMENT
- 16B LIGHT FIXTURE



3
A1-2

integrated
nfrastructures
nc.....

1324 North Belmont Avenue
Costa Mesa, CA 92626
Phone: 949 440-1113
Fax: 949 440-8900
World Wide Web: www.in2.com



Al Palmisano

Indio Hills Community Center
County of Riverside
80-400 Dillon Road, Indio Hills, California

REFERENCE NOTES 14

APPROVED

APPROVED

APPROVED

NO	DATE	BY	REMARKS

SITE PLAN

DRAWN -----
CHECKED -----
DATE --/--/--
SCALE AS NOTED
JOB NO. 06-0125

A1-1

- 1A EXPOSED STRUCTURE
- 1B NOT PART OF THIS CONTRACT (N/C)
- 1C OPEN
- 1D PROPERTY LINE
- 1E CENTER LINE OF STREET

- 2A ASPHALTIC CONCRETE PAVING
- 2B CONCRETE CURB
- 2C CONCRETE SIDEWALK
- 2D CONCRETE STEPS
- 2E LANDSCAPED AREA
- 2F TUBE STEEL FENCE
- 2G TUBE STEEL GATE
- 2H 12" x 12" CATCH BASIN
- 2J CONCRETE BENCH

- 3A CONCRETE FLOOR SLAB
- 3B CONTROL JOINT

- 4A CONCRETE MASONRY UNIT, SMOOTH FACE, SAND BLASTED FINISH
- 4B CONCRETE MASONRY UNIT, SPLIT FACE, SAND BLASTED FINISH
- 4C CONCRETE MASONRY UNIT, UNIT, SANDBLASTED FINISH
- 4D CONCRETE MASONRY UNIT, SILL, SANDBLASTED FINISH
- 4E CLASS BLOCK

- 5A METAL HANDRAIL
- 5B STRUCTURAL FRAMING

- 6A CABINET
- 6B COUNTER

- 7A BUILT UP ROOFING
- 7B ROOF HATCH
- 7C SHEET METAL FLASHING
- 7D SHEET METAL OUTLET
- 7E SYMMETRIC SLATE ROOF

- 8A METAL DOOR FRAME
- 8B SCHEDULED DOOR
- 8C SCHEDULED WINDOW

- 9A CARPET
- 9B CERAMIC TILE
- 9C GYPSUM BOARD
- 9D PLASTER WALL FINISH TYPE 1
- 9E RESILIENT TILE FLOORING
- 9F SUSPENDED ACoustICAL CEILING
- 9G TOPSET RUBBER BASE
- 9H EXTERIOR CERAMIC TILE

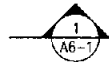
- 10A 1-1/2" DIA. x 42" x 36" GRAB BAR
- 10B GLASS MIRROR
- 10C SURFACE MOUNTED PAPER TOWEL DISPENSER
- 10D SURFACE MOUNTED SOAP DISPENSER
- 10E SURFACE MOUNTED TOILET TISSUE DISPENSER

- 10F TOILET COMPARTMENT
- 10G ACCESSIBILITY ENTRY SIGN
- 10H ACCESSIBILITY DIRECTIONAL SIGN
- 10I ACCESSIBLE PARKING SIGN

- 11A FIRE EXTINGUISHER CABINET
- 11B RANGE HOOD
- 11C RANGE

- 15A DRINKING FOUNTAIN
- 15B FLOOR DRAIN
- 15C MECHANICAL EQUIPMENT
- 15D DRYFLOW DRAIN
- 15E PLUMBING EQUIPMENT
- 15F ROOF DRAIN
- 15G SINK

- 16A ELECTRICAL EQUIPMENT
- 16B LIGHT FIXTURE



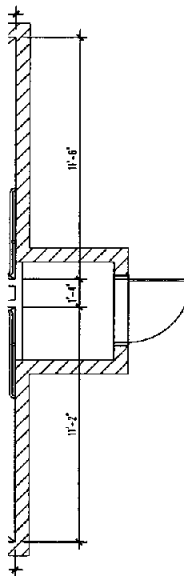
REFERENCE NOTES

14

FLOC

1/8"=1'-0"

2



15

ARCA

1/4"=1'-0"

3

Integrated Infrastructures Inc.

1334 North Wilshire Avenue
 Ontario, Ca 91764
 Phone: (909) 480-1134
 Fax: (909) 480-1856
 World Wide Web: www.iiinc.com



Anthony Joseph Palmisano
Indio Hills Community Center
 County of Riverside
 80-400 Dillon Road, Indio Hills, California

APPROVED

APPROVED

APPROVED

NO	DATE	BY	REMARKS

FLOOR PLAN

DRAWN -----
 CHECKED -----
 DATE --/--/--
 SCALE AS NOTED
 JOB NO. 06-0125

A2-1