

SUBMITTAL TO THE BOARD OF SUPERVISORS  
COUNTY OF RIVERSIDE, STATE OF CALIFORNIA

548A



**FROM:** County Counsel  
**SUBJECT:** Ordinance No. 348.4543

**SUBMITTAL DATE:** March 25, 2008

**RECOMMENDED MOTION:** That the Board of Supervisors adopt Ordinance No. 348.4543 amending the zoning in the Antelope Valley Area shown on Map No. 2.2252 Change of Zone Case No. 7035.

**BACKGROUND:** Change of Zone Case No. 7035 was tentatively approved by the Board of Supervisors on January 23, 2007.

JOE RANK  
County Counsel

DAVID H. K. HUFF

**C.E.O. RECOMMENDATION:**

APPROVE

BY:   
Tina Grande

County Executive Office Signature

Policy

Consent

Department Recommendation:  
Per Executive Office:

Prev. Agn. ref.

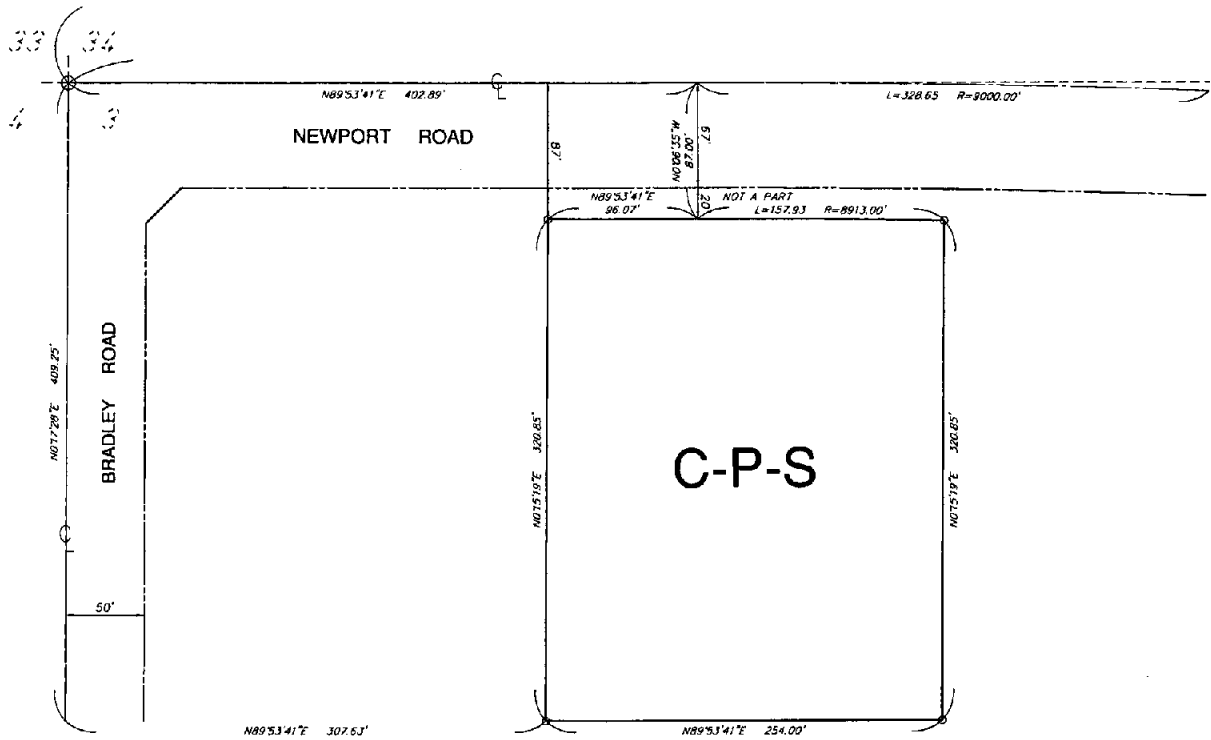
Dist. THIRD

AGENDA NO.

2.3

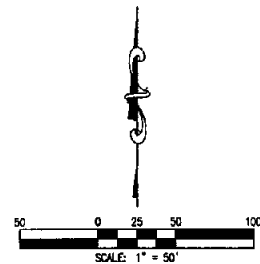


ANTELOPE VALLEY AREA  
 SEC.3, T.5S., R.3W . S.B.B. & W.



LEGEND

C-P-S SCENIC HIGHWAY COMMERCIAL



MAP NO. 2.2252  
 CHANGE OF OFFICIAL ZONING PLAN  
 AMENDING  
 MAP NO. 2 ORDINANCE NO. 348  
 CHANGE OF ZONE CASE NO. 7035  
 ADOPTED BY ORDINANCE NO. 348.4543  
 APRIL 1, 2008  
 RIVERSIDE COUNTY BOARD OF SUPERVISORS