

636A

**SUBMITTAL TO THE BOARD OF SUPERVISORS  
COUNTY OF RIVERSIDE, STATE OF CALIFORNIA**



**FROM:** County Counsel  
**SUBJECT:** Ordinance No. 348.4577

**SUBMITTAL DATE:** March 26, 2008

**RECOMMENDED MOTION:** That the Board of Supervisors adopt Ordinance No. 348.4577 amending the zoning in the Thousand Palms District shown on Map No. 40.039 Change of Zone Case No. 7585.

**BACKGROUND:** Change of Zone Case No. 7585 was tentatively approved by the Board of Supervisors on March 25, 2008.

*Minh Tran* Minh C. Tran  
\_\_\_\_\_  
JOE RANK  
County Counsel

**C.E.O. RECOMMENDATION:**

APPROVE  
BY: *Tina Grande*  
\_\_\_\_\_  
Tina Grande

County Executive Office Signature

Department Recommendation:  
Per Executive Office:  
 Policy  
 Policy  
 Consent  
 Consent

Prev. Agn. ref.

Dist. FOURTH

AGENDA NO.

ORDINANCE NO. 348.4577

AN ORDINANCE OF THE COUNTY OF RIVERSIDE  
AMENDING ORDINANCE NO. 348 RELATING TO ZONING

The Board of Supervisors of the County of Riverside Ordains as Follows:

Section 1. Section 4.1 of Ordinance No. 348, and Thousand Palms District Zoning Plan Map No. 40. as amended, are further amended by placing in effect in the zone or zones as shown on the map entitled "Change of Official Zoning Plan Thousand Palms District, Map No. 40.039 Change of Zone Case No. 7585," which map is made a part of this ordinance.

Section 2. This ordinance shall take effect 30 days after its adoption.

BOARD OF SUPERVISORS OF THE COUNTY  
OF RIVERSIDE, STATE OF CALIFORNIA

By: \_\_\_\_\_  
Chairman, Board of Supervisors

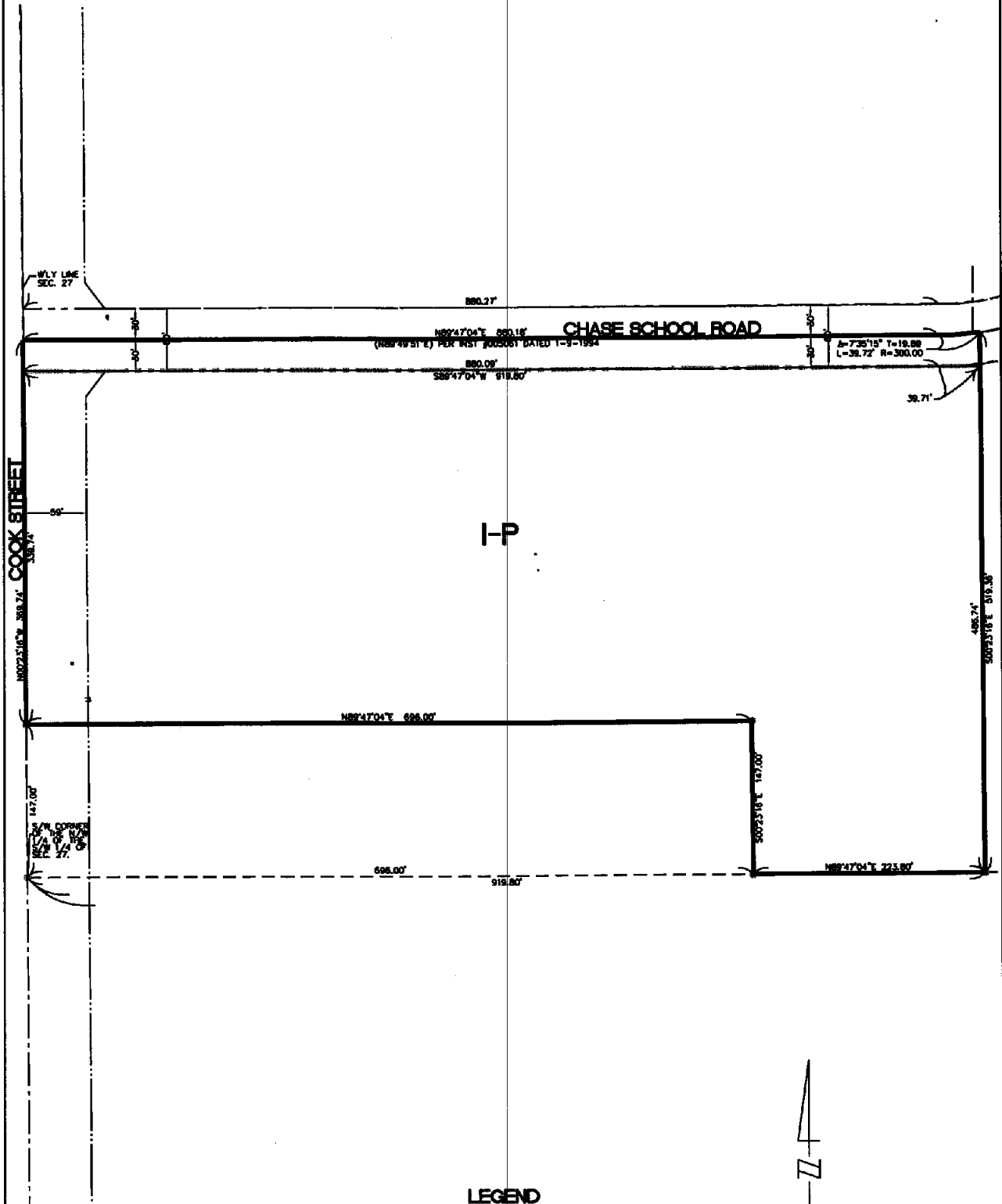
ATTEST:

CLERK OF THE BOARD:

By: \_\_\_\_\_  
Deputy

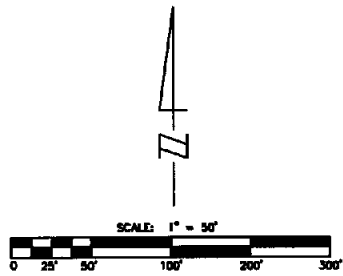
(SEAL)

SEC. 27, T.4 S, R.6 E, SBM



LEGEND

I-P INDUSTRIAL PARK



MAP NO. - 40.039  
**CHANGE OF OFFICIAL ZONING PLAN**  
 THOUSAND PALMS DISTRICT  
 CHANGE OF ZONE NO. 7585  
 AMENDING ORDINANCE NO. 348  
 ADOPTED BY ORDINANCE NO. 348.4577  
 ON APRIL 08, 2007  
 RIVERSIDE COUNTY BOARD OF SUPERVISORS