

SUBMITTAL TO THE BOARD OF SUPERVISORS
COUNTY OF RIVERSIDE, STATE OF CALIFORNIA

485A



FROM: County Counsel
SUBJECT: Ordinance No. 348.4592

SUBMITTAL DATE: May 20, 2008

RECOMMENDED MOTION: That the Board of Supervisors adopt Ordinance No. 348.4592 amending the zoning in the Lower Coachella Valley District shown on Map No. 41.074 Change of Zone Case No. 7029.

BACKGROUND: Change of Zone Case No. 7029 was tentatively approved by the Board of Supervisors on December 13, 2005.

Minh C. Tran
JOE RANK
County Counsel

C.E.O. RECOMMENDATION:

APPROVE

BY:
Tina Grande

County Executive Office Signature

Policy
 Policy

Consent
 Consent

Department Recommendation:
Per Executive Office:

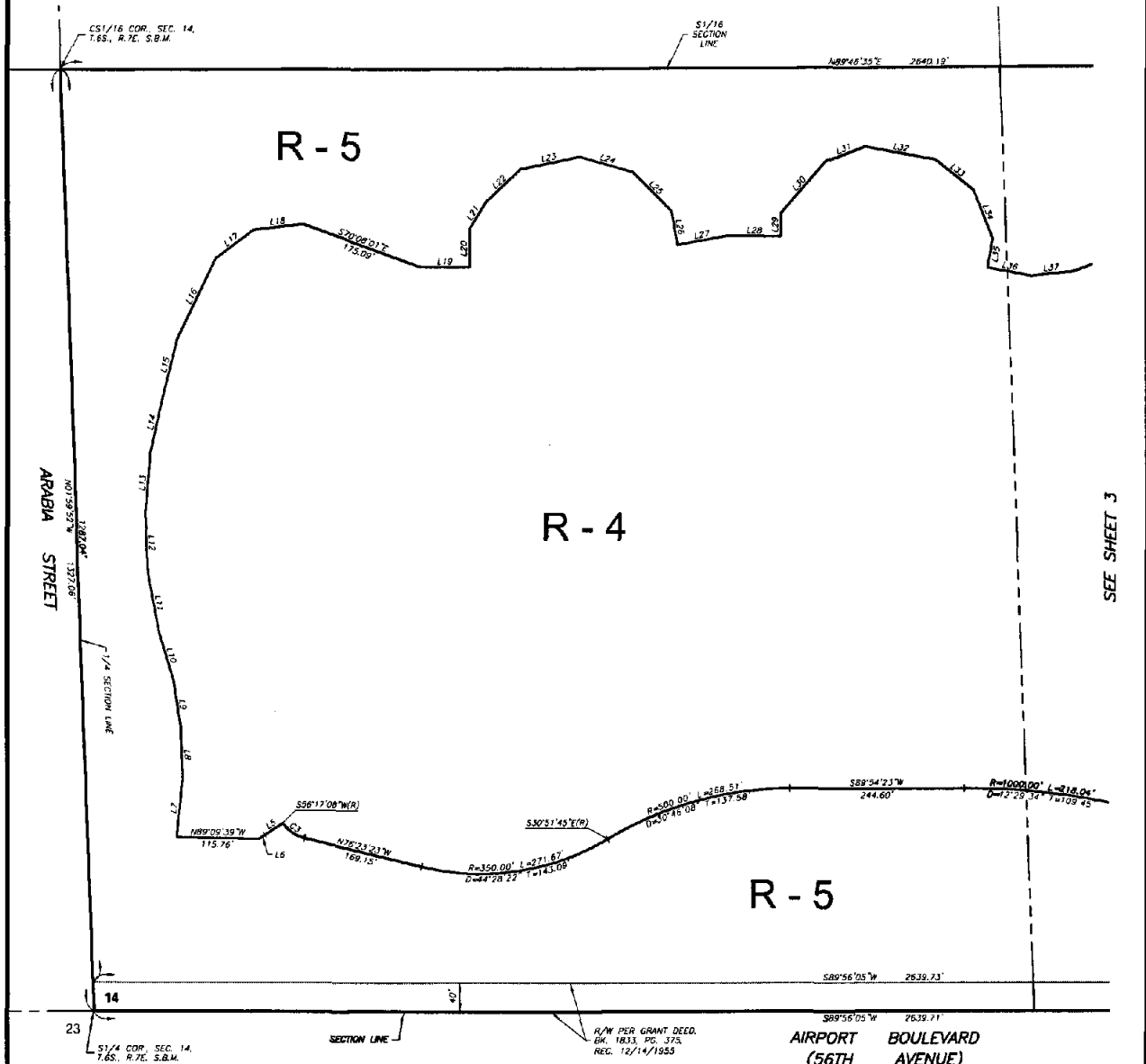
Prev. Agn. ref.

Dist. FOURTH

AGENDA NO.

2.14

SEC. 14, T.6S., R.7E. S.B.B. & M.

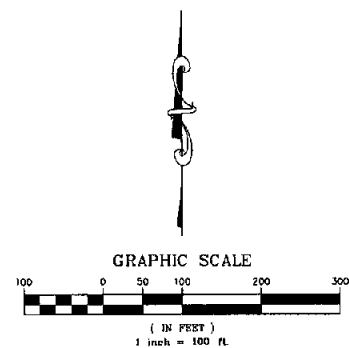


LINE	BEARING	LENGTH
L5	S89°17'08\"W	30.04'
L6	S57°00'38\"W	2.81'
L7	N02°58'28\"E	81.23'
L8	N01°36'50\"W	76.33'
L9	N08°36'45\"W	76.00'
L10	N16°45'10\"W	68.68'
L11	N10°39'03\"W	85.51'
L12	N02°56'58\"W	85.63'
L13	N04°44'28\"E	85.65'
L14	N12°26'55\"E	85.63'
L15	N14°09'09\"E	88.18'
L16	N29°29'16\"E	124.88'
L17	N5°29'50\"E	66.93'
L18	N8°02'18\"E	68.30'
L19	N82°38'52\"E	68.10'
L20	N00°20'08\"W	82.02'

LINE	BEARING	LENGTH
L21	N37°10'28\"E	46.16'
L22	N48°12'11\"E	87.62'
L23	N72°58'48\"E	88.04'
L24	S23°57'27\"E	77.80'
L25	S44°21'02\"E	77.50'
L26	S10°03'18\"E	47.66'
L27	N72°58'44\"E	72.80'
L28	S88°01'51\"E	72.85'
L29	N00°38'08\"E	32.11'
L30	N40°41'52\"E	95.76'
L31	N82°32'18\"E	58.48'
L32	S72°20'05\"E	98.79'
L33	S51°17'20\"E	88.92'
L34	S21°40'58\"E	73.82'
L35	S10°19'58\"W	40.82'
L36	S78°20'08\"E	82.07'
L37	N84°16'13\"E	88.81'

CURVE	RADIUS	CHORD	LENGTH	ASSUMPTION
CJ	80.00'	42°40'51\"	37.24'	18.83'

LEGEND
 [R-4] PLANNED RESIDENTIAL
 [R-5] OPEN AREA COMBINING ZONE RESIDENTIAL DEVELOPMENTS



MAP NO. 41.074
CHANGE OF OFFICIAL ZONING PLAN
LOWER COACHELLA VALLEY DISTRICT

CHANGE OF ZONE CASE NO. 7029
 AMENDING ORDINANCE NO. 348
 ADOPTED BY ORDINANCE NO. 348.4592
 JUNE 3, 2008
 RIVERSIDE COUNTY BOARD OF SUPERVISORS

