

624

**SUBMITTAL TO THE BOARD OF SUPERVISORS
COUNTY OF RIVERSIDE, STATE OF CALIFORNIA**



FROM: Department of Facilities Management

SUBMITTAL DATE:
June 6, 2008

SUBJECT: Hemet Family Care Center

RECOMMENDED MOTION: That the Board of Supervisors:

1. Approve the Schematic Design on file with Facilities Management for the Hemet Family Care Center; and
2. Authorize the architect to proceed to the design development and construction document phases of the project.

BACKGROUND: On January 15, 2008, the Board of Supervisors approved the architectural and engineering services agreement between the County of Riverside and Hill Partnership, Inc. of Newport Beach, California, and authorized the Chairman to execute the agreement on behalf of the County.

(Continued)

Robert Field, Director
Department of Facilities Management

FINANCIAL DATA	Current F.Y. Total Cost:	\$ 0	In Current Year Budget:	N/A
	Current F.Y. Net County Cost:	\$ 0	Budget Adjustment:	N/A
	Annual Net County Cost:	\$ 0	For Fiscal Year:	07/08

SOURCE OF FUNDS: Capital Improvement Project – to be reimbursed by CORAL Bond proceeds	Positions To Be Deleted Per A-30	<input type="checkbox"/>
	Requires 4/5 Vote	<input type="checkbox"/>

C.E.O. RECOMMENDATION: APPROVE

BY:
Jennifer L. Sargent

County Executive Office Signature

Reviewed by
CLIP TEAM
Christopher Hans

Departmental Concurrence

- Policy
- Policy
- Consent
- Consent

Dep't Recomm.:
Per Exec. Ofc.:

Prev. Agn. Ref.: 3.9, 1/15/08

District: 3

Agenda Number:

3.18

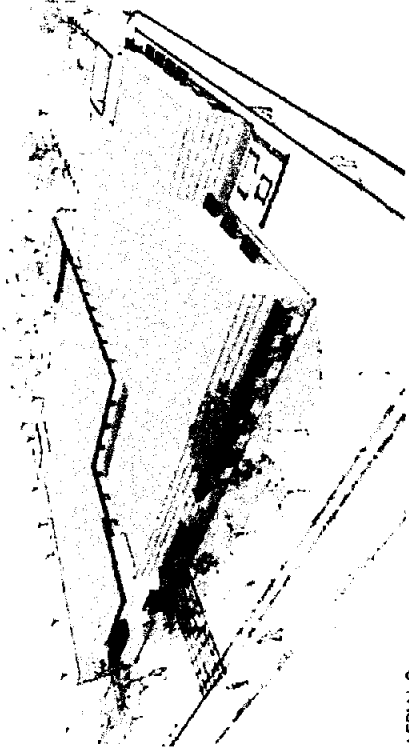
Department of Facilities Management
Hemet Family Care Center
June 6, 2008
Page 2

BACKGROUND: (Continued)

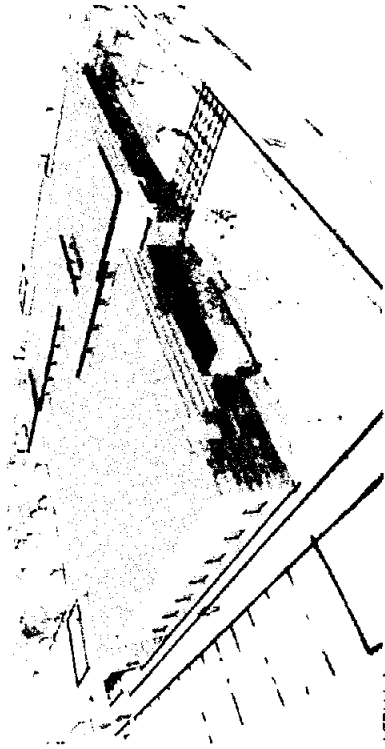
The architects have now completed the schematics (Attachment A) and have estimated the construction costs for the project at \$10.8 million. The cost estimate will continue to be refined following the Board's approval to proceed into the design development and construction document phases in accordance with the Capital Improvement Program (Board Policy B-22).

There are no costs associated with the approval of the schematics.

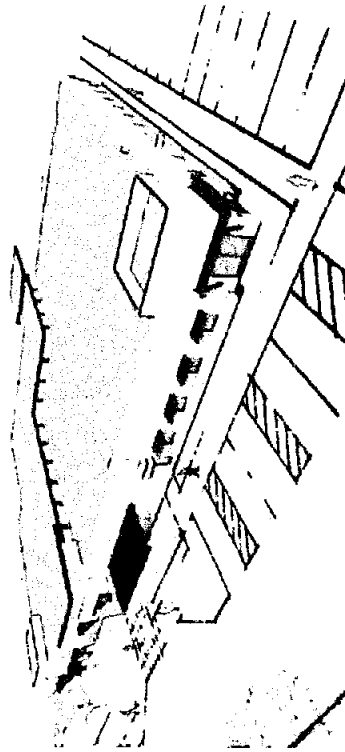
Attachment A



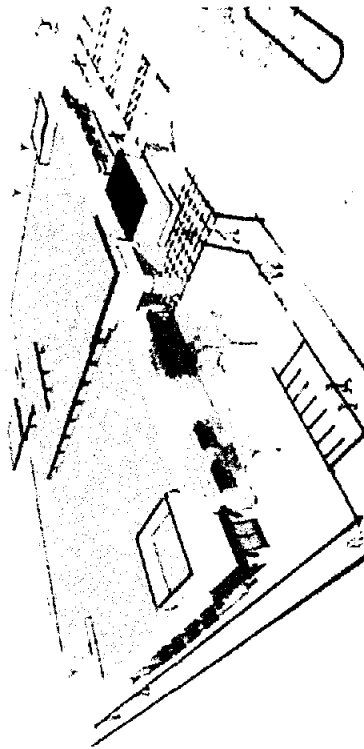
AERIAL 2



AERIAL 1



AERIAL 4



AERIAL 3



Architecture
Planning
Interiors
HEMET PLANNING INC.
1000 N. 10TH ST.
HEMET, IDAHO 83401
PHONE: 208.383.4200
FAX: 208.383.4205

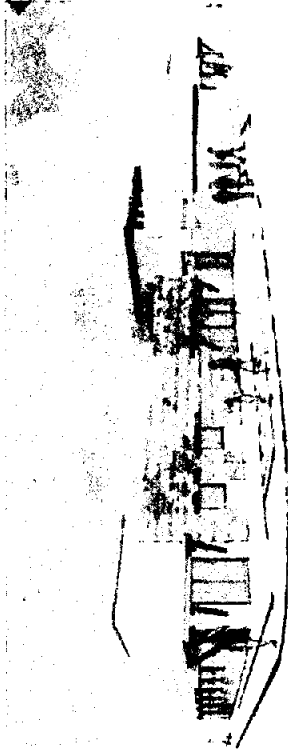
HEMET FAMILY CARE CENTER
COUNTY OF RIVERSIDE
DEPARTMENT OF FACILITIES MANAGEMENT

HEMET PLANNING INC.
AERIAL 1 - 2004

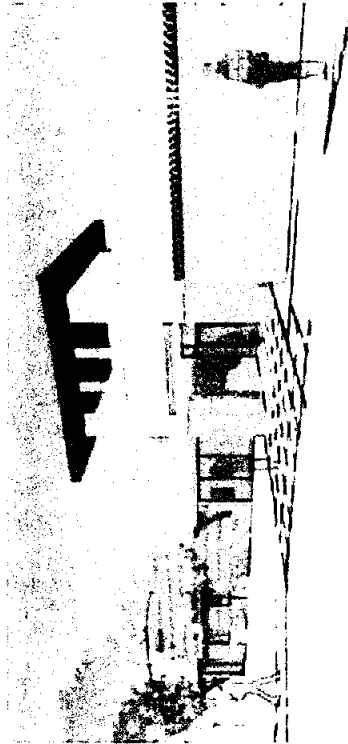
Attachment A



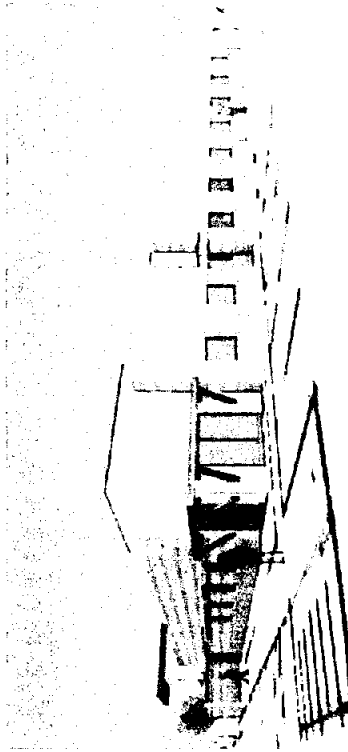
SCENE 1



SCENE 2



SCENE 3



SCENE 4

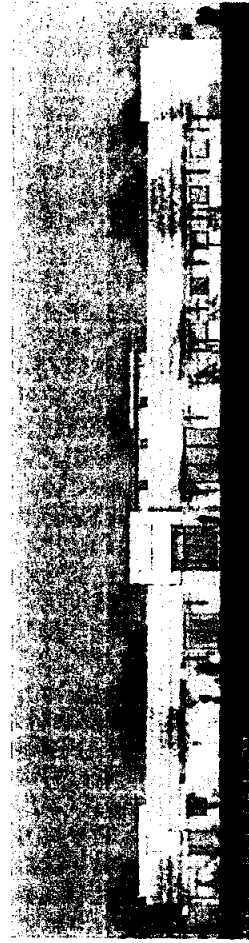
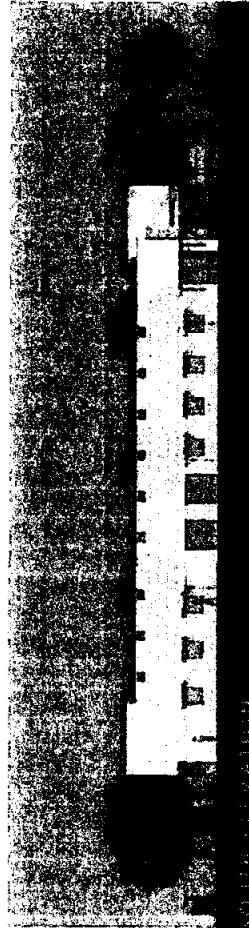


Architecture
Planning
Interiors
1000 N. 1st St.
Hemet, CA 94541
Tel: (408) 987-1100
Fax: (408) 987-1101
www.hpi.com

HEMET FAMILY CARE CENTER
COUNTY OF RIVERSIDE
DEPARTMENT OF FACILITIES MANAGEMENT

SD6

Attachment A



Architecture
Planning
Interiors
1000 N. 1st St.
Riverside, CA 92501
Tel: 951.514.1234

HEMET FAMILY CARE CENTER
COUNTY OF RIVERSIDE
DEPARTMENT OF FACILITIES MANAGEMENT

CLONING ACT
AS FILED 1974

SD7