

174A  
SUBMITTAL TO THE BOARD OF SUPERVISORS  
COUNTY OF RIVERSIDE, STATE OF CALIFORNIA



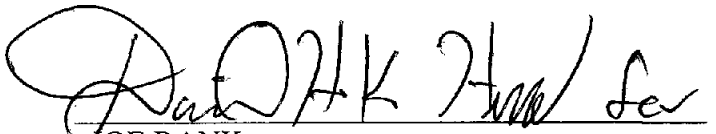
FROM: County Counsel

SUBMITTAL DATE: June 24, 2008

SUBJECT: Ordinance No. 348.4595

RECOMMENDED MOTION: That the Board of Supervisors adopt Ordinance No. 348.4595 amending the zoning in the Antelope Valley Area shown on Map No. 2.2280 Change of Zone Case No. 7070.

BACKGROUND: Change of Zone Case No. 7070 was tentatively approved by the Board of Supervisors on January 23, 2007.

  
JOE RANK  
County Counsel      **DAVID H. K. HUFF**

C.E.O. RECOMMENDATION:

APPROVE

  
Tina Grande

County Executive Office Signature

Policy  
 Policy

Consent  
 Consent

Department Recommendation:  
Per Executive Office:

Prev. Agn. ref.

Dist. THIRD

AGENDA NO.

1 ORDINANCE NO. 348.4595

2 AN ORDINANCE OF THE COUNTY OF RIVERSIDE  
3 AMENDING ORDINANCE NO. 348 RELATING TO ZONING  
4

5 The Board of Supervisors of the County of Riverside ordains as follows:

6 Section 1. Section 4.1 of Ordinance No. 348, and official Zoning Plan Map No. 2, as  
7 amended, are further amended by placing in effect in the Antelope Valley Area, the zone or zones as  
8 shown on the map entitled "Change of Official Zoning Plan Amending Ordinance No. 348, Map No.  
9 2.2280 Change of Zone Case No. 7070" which map is made a part of this ordinance.

10 Section 2. This ordinance shall take effect thirty (30) days after its adoption.

11 BOARD OF SUPERVISORS OF THE COUNTY  
12 OF RIVERSIDE, STATE OF CALIFORNIA

13 By: \_\_\_\_\_  
14 Chairman

15 ATTEST:

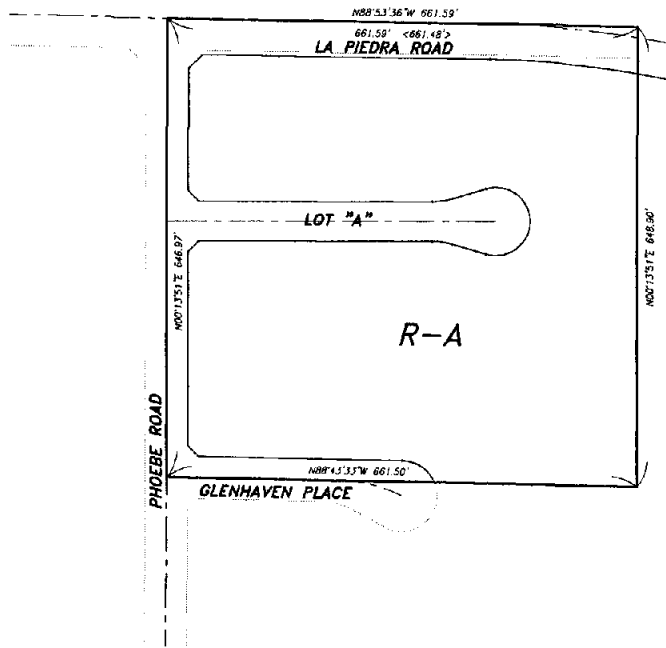
16 CLERK OF THE BOARD:

17  
18 By: \_\_\_\_\_  
19 Deputy

20 (SEAL)

21  
22  
23 FORM APPROVED COUNTY COUNSEL  
24 BY: David H.K. Huff 6/17/08  
DAVID H.K. HUFF DATE

SECTION 4, T.6 S., R. 3 W. S.B.M.



LEGEND

R-A RESIDENTIAL AGRICULTURAL

MAP NO. 2,228G  
CHANGE OF OFFICIAL ZONING PLAN  
ANTELOPE VALLEY  
DISTRICT

CHANGE OF ZONE CASE NO. 7070  
AMENDING ORDINANCE NO. 348  
ADOPTED BY ORDINANCE NO. 348-4595  
DATE: JUNE 24, 2008  
RIVERSIDE COUNTY BOARD OF SUPERVISORS

ASSESSORS PARCEL NO. 360-040-007



SCALE 1" = 80'

