

SUBMITTAL TO THE BOARD OF SUPERVISORS  
COUNTY OF RIVERSIDE, STATE OF CALIFORNIA

676A



FROM: County Counsel

SUBMITTAL DATE: September 16, 2008

SUBJECT: Ordinance No. 348.4610

RECOMMENDED MOTION: That the Board of Supervisors adopt Ordinance No. 348.4610 amending the zoning in the Tule Peak Area shown on Map No. 2.2288 Change of Zone Case No. 7426.

BACKGROUND: Change of Zone Case No. 7426 was tentatively approved by the Board of Supervisors on July 29, 2008.

JOE RANK  
County Counsel

DAVID H. K. HUFF

C.E.O. RECOMMENDATION:

APPROVE

BY   
Tina Grande

County Executive Office Signature

Policy

Consent

Department Recommendation:  
Per Executive Office:

Prev. Agn. ref.

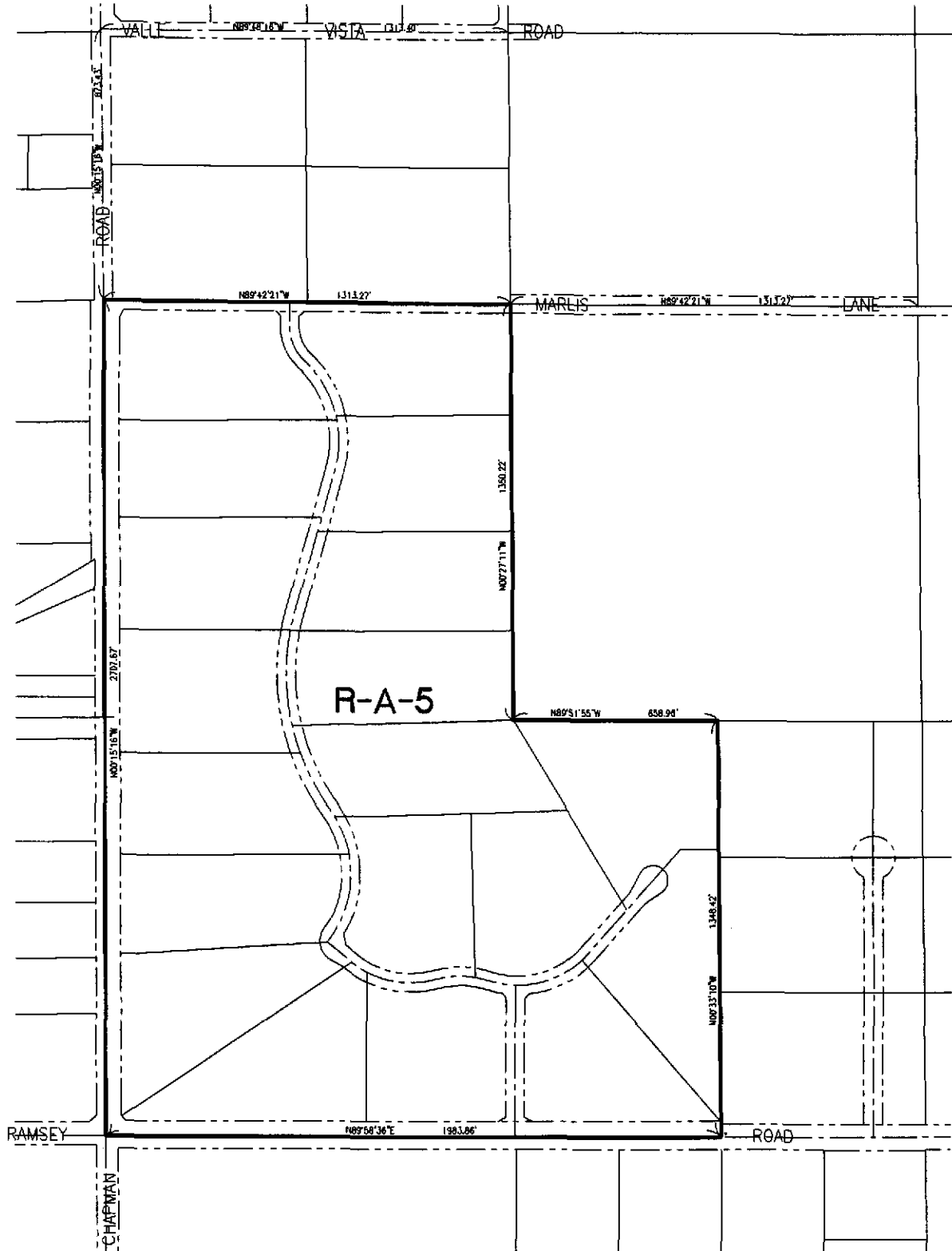
Dist. THIRD

AGENDA NO.



# TULE PEAK

SEC. 11, T. 8S., R. 3E.



## LEGEND

R-A-5 RESIDENTIAL AGRICULTURAL, 5 ACRE MIN.

MAP NO. 2.2288  
CHANGE OF OFFICIAL ZONING PLAN  
AMENDING

MAP NO. 2, ORDINANCE NO. 348

CHANGE OF ZONE CASE NO. 7426  
ADOPTED BY ORDINANCE NO. 348.4610  
SEPTEMBER 30, 2008

RIVERSIDE COUNTY BOARD OF SUPERVISORS



SCALE IN FEET

