

603

**SUBMITTAL TO THE BOARD OF SUPERVISORS
COUNTY OF RIVERSIDE, STATE OF CALIFORNIA**



FROM: Department of Facilities Management

SUBMITTAL DATE:
September 9, 2008

SUBJECT: Cajalco Fire Station

RECOMMENDED MOTION: That the Board of Supervisors:

1. Approve the Schematic Design on file with Facilities Management for the Cajalco Fire Station; and
2. Authorize the architect to proceed to the design development and construction document phases of the project.

BACKGROUND: On July 29, 2008, the Board of Supervisors approved the architectural services agreement between the County of Riverside and Ruhnau Ruhnau Clarke of Riverside, California, and authorized the Chairman to execute the agreement on behalf of the County.

(Continued)

Robert Field, Director
Department of Facilities Management

FINANCIAL DATA	Current F.Y. Total Cost:	\$ 0	In Current Year Budget:	N/A
	Current F.Y. Net County Cost:	\$ 0	Budget Adjustment:	N/A
	Annual Net County Cost:	\$ 0	For Fiscal Year:	08/09

SOURCE OF FUNDS: Fire Mitigation Funds	Positions To Be Deleted Per A-30	<input type="checkbox"/>
	Requires 4/5 Vote	<input type="checkbox"/>

C.E.O. RECOMMENDATION: APPROVE

County Executive Office Signature

BY: Jennifer L. Sargent

Departmental Concurrence

Reviewed by
CIP TEAM
Christopher Hans

Consent
 Policy
 Consent
 Policy

Dep't Recomm.:
 Per Exec. Ofc.:

Department of Facilities Management
Cajalco Fire Station
September 9, 2008
Page 2

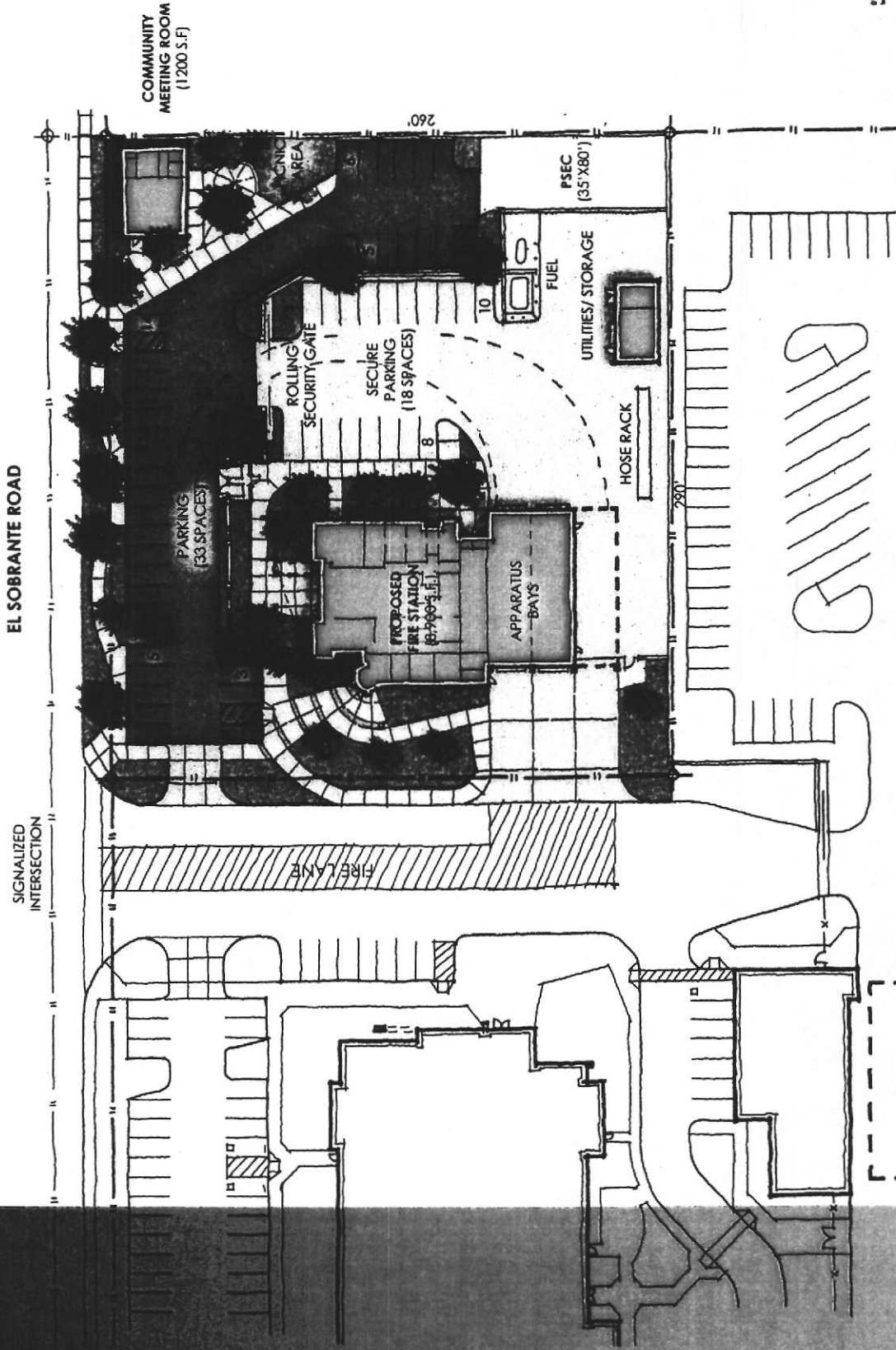
BACKGROUND: (Continued)

The architects have completed the schematics (Attachment A). The estimated project costs are \$6.5 million. The cost estimate will continue to be refined following the Board's approval to proceed into the design development and construction document phases in accordance with the Capital Improvement Program (Board Policy B-22).

There are no costs associated with the approval of the schematics.

CAJALCO FIRE STATION

RIVERSIDE COUNTY FIRE DEPARTMENT



SITE PLAN

SCHEMATIC DESIGN

Robinson Robinson Clarke

CAJALCO FIRE STATION

RIVERSIDE COUNTY FIRE DEPARTMENT



FLOOR PLAN

12'-0"

41'-0"

12'-0"

12'-3"

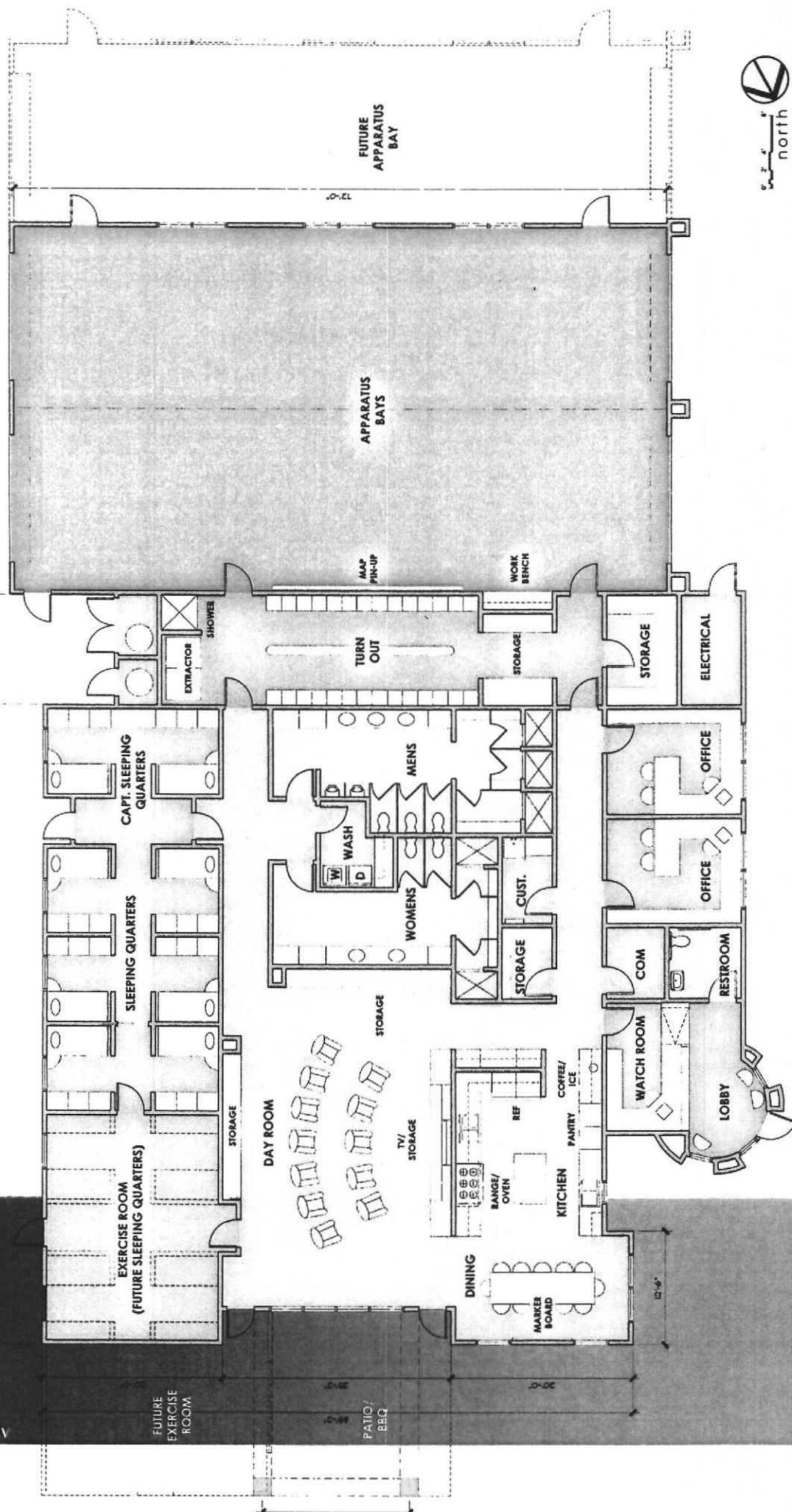
12'-0"

12'-0"

12'-0"

12'-0"

12'-0"

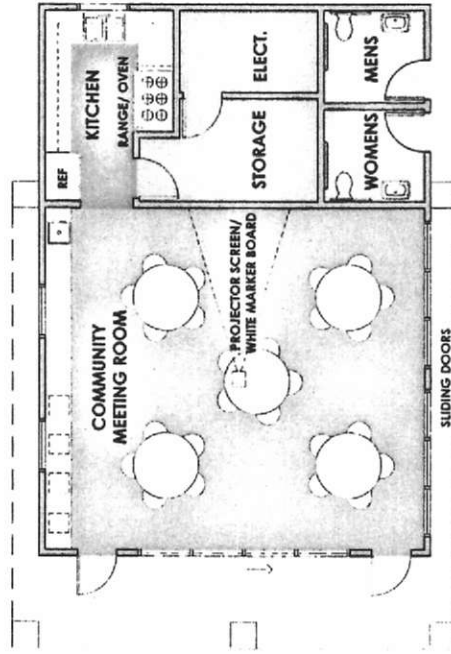


SCHEMATIC DESIGN

Rudman Rudman Clarke

COMMUNITY MEETING ROOM

COUNTY OF RIVERSIDE



BBQ/
PICNIC AREA/
OVERFLOW SEATING



ALTERNATE FLOOR PLAN

SCHEMATIC DESIGN

Rubman Rubman Clarke