

**SUBMITTAL TO THE BOARD OF SUPERVISORS  
COUNTY OF RIVERSIDE, STATE OF CALIFORNIA**

740



**FROM:** TLMA - Planning Department

**SUBMITTAL DATE:**  
October 1, 2008

**SUBJECT:** San Gorgonio Pass Heritage Corridor Project

**RECOMMENDED MOTION:** That the Board of Supervisors: 1) Receive and File this report regarding the San Gorgonio Pass Heritage Corridor project; and 2) Direct the Planning Department to return to the Board within 30 days with specific recommendations regarding the establishment of the San Gorgonio Pass Heritage Corridor, and the establishment of a committee, as described below, with direction to work with local, state and federal agencies to advise the Board regarding the proposed Heritage Corridor.

**BACKGROUND:** On February 26, 2008, the Board of Supervisors directed County staff to work with community members and the appropriate local, state, and federal agencies to study the viability of establishing a Heritage Corridor Program for the San Gorgonio Pass, and to outline an overall strategy for its implementation. The purpose of this program is to emphasize the historical, cultural, and scenic attributes of the San Gorgonio Pass area, for the education and benefit of local residents, businesses, and tourists. The San Gorgonio Pass Heritage Corridor Task Force was established to guide the development of this program.

\_\_\_\_\_  
Ron Goldman  
Planning Director

(Continued on Attached Pages)

<b>FINANCIAL DATA</b>	Current F.Y. Total Cost:	\$ 20,000	In Current Year Budget:	Yes
	Current F.Y. Net County Cost:	\$ 20,000	Budget Adjustment:	No
	Annual Net County Cost:	\$ -0-	For Fiscal Year:	08/09

<b>SOURCE OF FUNDS:</b> General Fund	Positions To Be Deleted Per A-30	<input type="checkbox"/>
	Requires 4/5 Vote	<input type="checkbox"/>

**C.E.O. RECOMMENDATION:**

APPROVE

BY:   
Tina Grande

**County Executive Office Signature**

Dep't Recomm.:  Consent  Policy

Per Exec. Ofc.:  Consent  Policy

Prev. Agn. Ref.: 3.57 2.26.08 | District: | Agenda Number:

3.36

The Task Force has met monthly since February 2008, and has concluded that the Heritage Corridor program is viable and has proposed that it consist of several key components. The Task Force recommends that the Board establish an ongoing committee comprised of private stakeholder interests, public agencies (at the state and local level) within Riverside County, local cities, and neighboring San Bernardino County.

The committee will recommend long-term goals and specific recommendations for the program related to grant funding, the identification of an historical era and theme to emphasize, the creation of a signage program and a logo, the identification of historical sites and their significance, the establishment of a program boundary in coordination with surrounding cities and counties and the State Parks Department, coordination with Caltrans on highway signage and marketing efforts, and also state and national designations for the corridor.

The Task Force has concluded that an identifiable and unique logo be designed which meets both state and national criteria within the corridor. The logo would be themed to promote cross-jurisdictional participation and could be easily identified not just within the immediate area but throughout the county. While the corridor name has not yet been selected, there have been several suggestions which are under consideration, including: California Gateway Heritage Corridor, Stagecoach Heritage Corridor, Bradshaw Trail Heritage Corridor, and San Gorgonio Pass Heritage Corridor. Upon choosing a name, the ongoing committee would work closely with the Riverside County Transportation Department and Caltrans to ensure that all requirements of both agencies in regard to the corridor are met.

The Heritage Corridor Task Force participants who have participated in this program thus far are:

**County of Riverside (Supervisor Ashley's Staff)** - Robin Hastings, Jamie Hurtado, Elisa Laurel

**County of Riverside Staff** - Jerry Jolliffe and Wendell Bugtai (Planning Department), Keith Herron, Mark Brewer and Christie Burton (Park and Open Space District), Lawrence Tai (Transportation Department), Pamela Hogan, (Economic Development Agency), Terri Bowen (EDA; Edward-Dean Museum)

**County of San Bernardino** - David Prush

**Caltrans** - Haissam Yahya

**National Park Service** – Linda Stonier, Anne Dove

**California State Parks Department** – Ellen Absher, Nor Ruhmke

**Beaumont-Cherry Valley Recreation and Park District** – Mickey Valdivia, Natalie Batista

**City of Banning** - Bob Botts, Councilman

**City of Beaumont** – Jeff Fox, Councilman; Alan Kapanicas, City Manager; Chris Tracy, Kyle Warsinski

**Yucaipa Historical Society** – David Miller, Claire-Marie Teeters

**Building Industry Association** – Tommy Thompson

**Property Owners Association of Riverside County** – Bruce Colbert

**Riverside County Farm Bureau** – Ellen Lloyd-Trover

**Banning Health Services** – Pamela Scott

**Pass Municipal Advisory Committee** – Tina Kummerle (Highland Springs Resort)

**Local Residents and other Businesses** – Scott Riley, Tom Chong, Lyle Millage, Allen Parker, George Liblin, John and Sue Goldseth, Marcel Thibault, Matt Stoepolwerth

The Task Force has identified the general location of the corridor. The ongoing committee will decide the exact location for the corridor. Since these historical sites are scattered throughout various jurisdictions, the Task Force has indicated that the established committee not focus on a linear corridor. Rather, a virtual corridor providing signage to several sites which loop throughout The Pass and across jurisdictional lines would be more in line with the Heritage Corridor vision.

It should also be noted that the County General Plan Circulation Element includes a section for Scenic Highways which shows Highway 243 and 62 as state designated scenic highways, and the I-10 freeway, San Timoteo Canyon Road, and Beaumont Avenue as eligible for County and State scenic highway designations. It is recommended that the ongoing committee study these

designations and recommend how to implement the scenic highway vision embodied within the County General Plan Circulation Element.

The Task Force would also like to promote commercial opportunities in the surrounding areas where the Heritage Corridor and historical sites are located. The County Planning Department has indicated to the Task Force that the upcoming 2008-09 General Plan update will provide for such commercial opportunities within the scope of their request. An amendment to the Rural and Rural Community Foundation Components of the General Plan will be proposed to allow opportunities for very small commercial developments that are compatible with the rural context of the area. The adoption of the 2008-09 General Plan is expected to occur by late 2009. The City of Beaumont Planning Department has indicated that the County General Plan Land Use Element and the General Plan amendment proposal related to commercial development is consistent with their pending Downtown Beaumont Specific Plan.

Attached, for informational purposes, is a map providing the location of all compiled historical sites in the proposed corridor area, accompanied by pictures of the sites, and a list of the sites with more detailed information. .

The County Planning Department anticipates that its participation in this program will cost approximately \$20,000 during the 2008-09 fiscal year. The costs for this program have been included in the department's budget as part of the 2008-09 General Plan update project.

**SAN GORGONIO PASS**

**Heritage Corridor Program**

**HISTORICAL SITES**

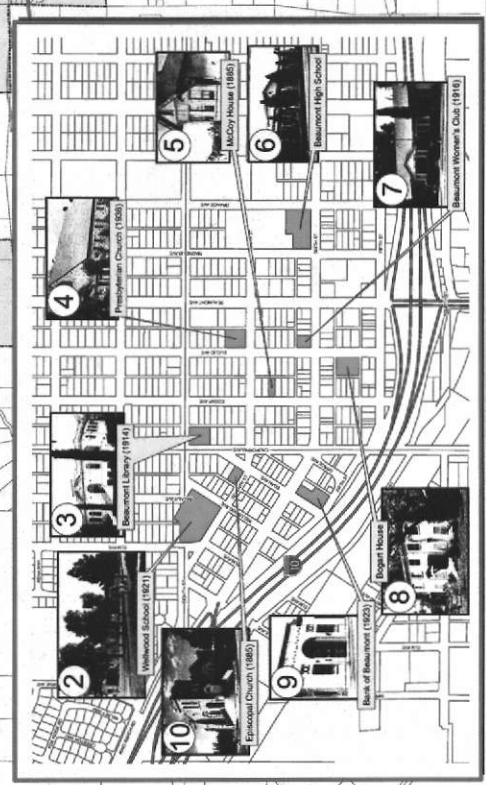
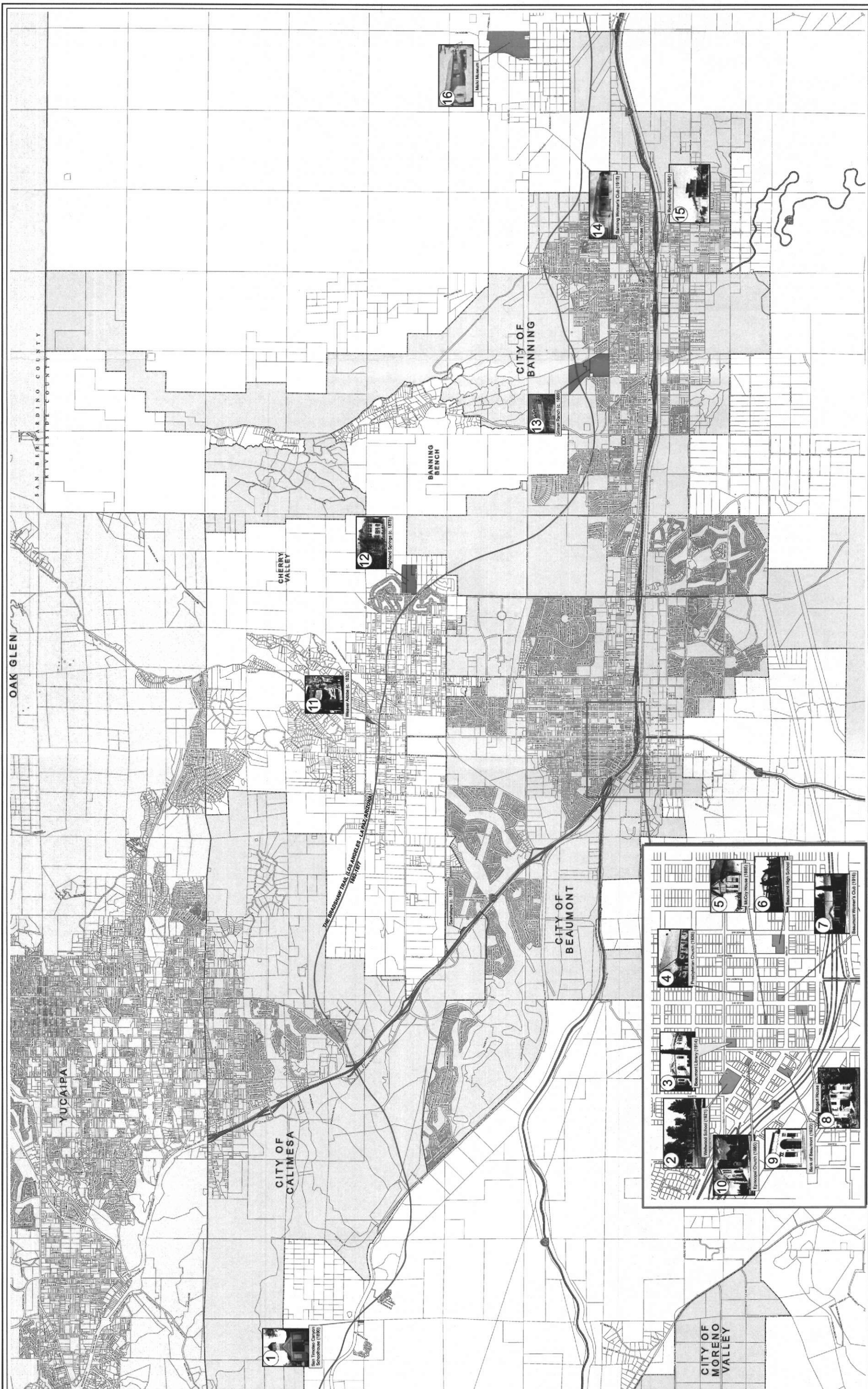


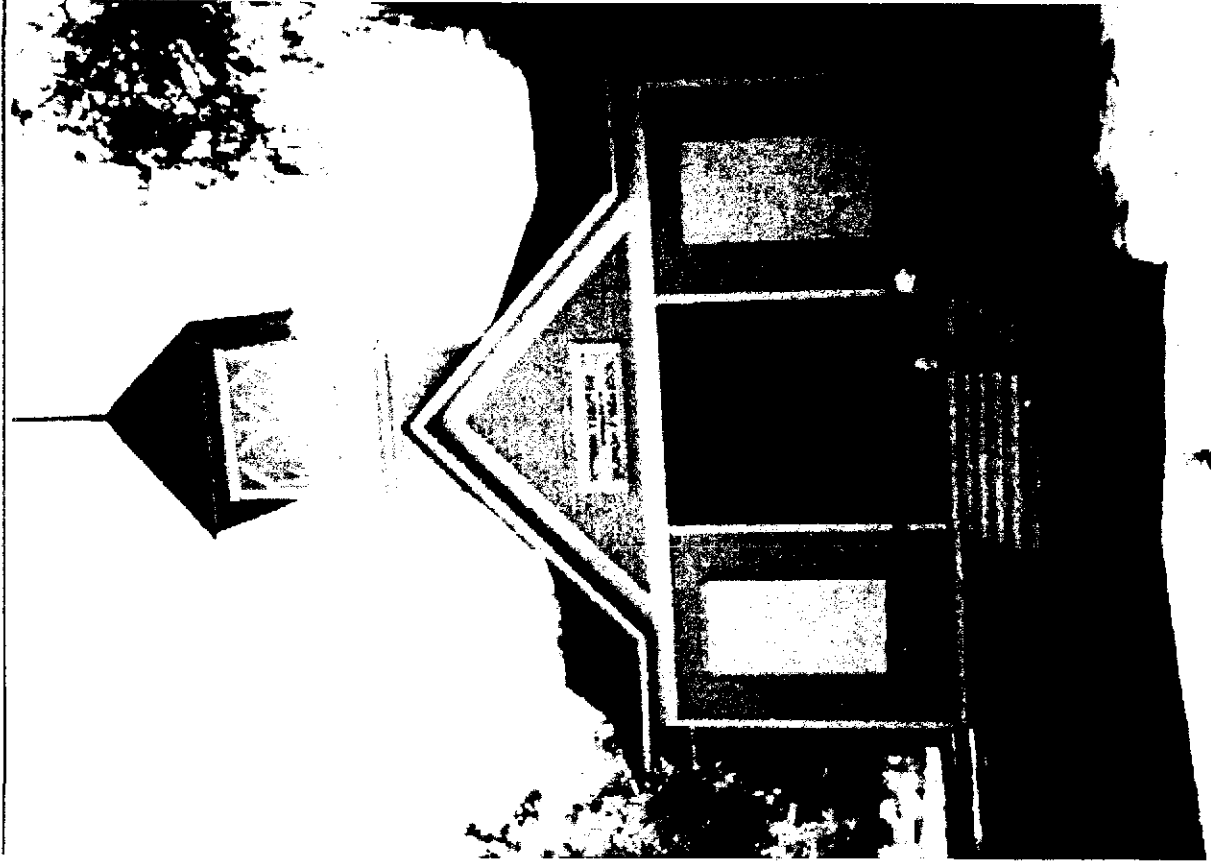
- Beaumont Historical Sites
- Riverside County Historical / Points of Interest
- Malki Museum (Morongo Reservation)
- Parcel Lines
- County boundary
- Cities
- Highways
- The Bradshaw Trail (Route between Los Angeles and La Paz, Arizona, 1862-1877)



January 5, 2008

Copyright 2008 by the City of Beaumont, California. All rights reserved. This map is a reproduction of the original map prepared by the City of Beaumont, California. The original map was prepared by the City of Beaumont, California, and is the property of the City of Beaumont, California. This map is not to be used for any other purpose without the written consent of the City of Beaumont, California.

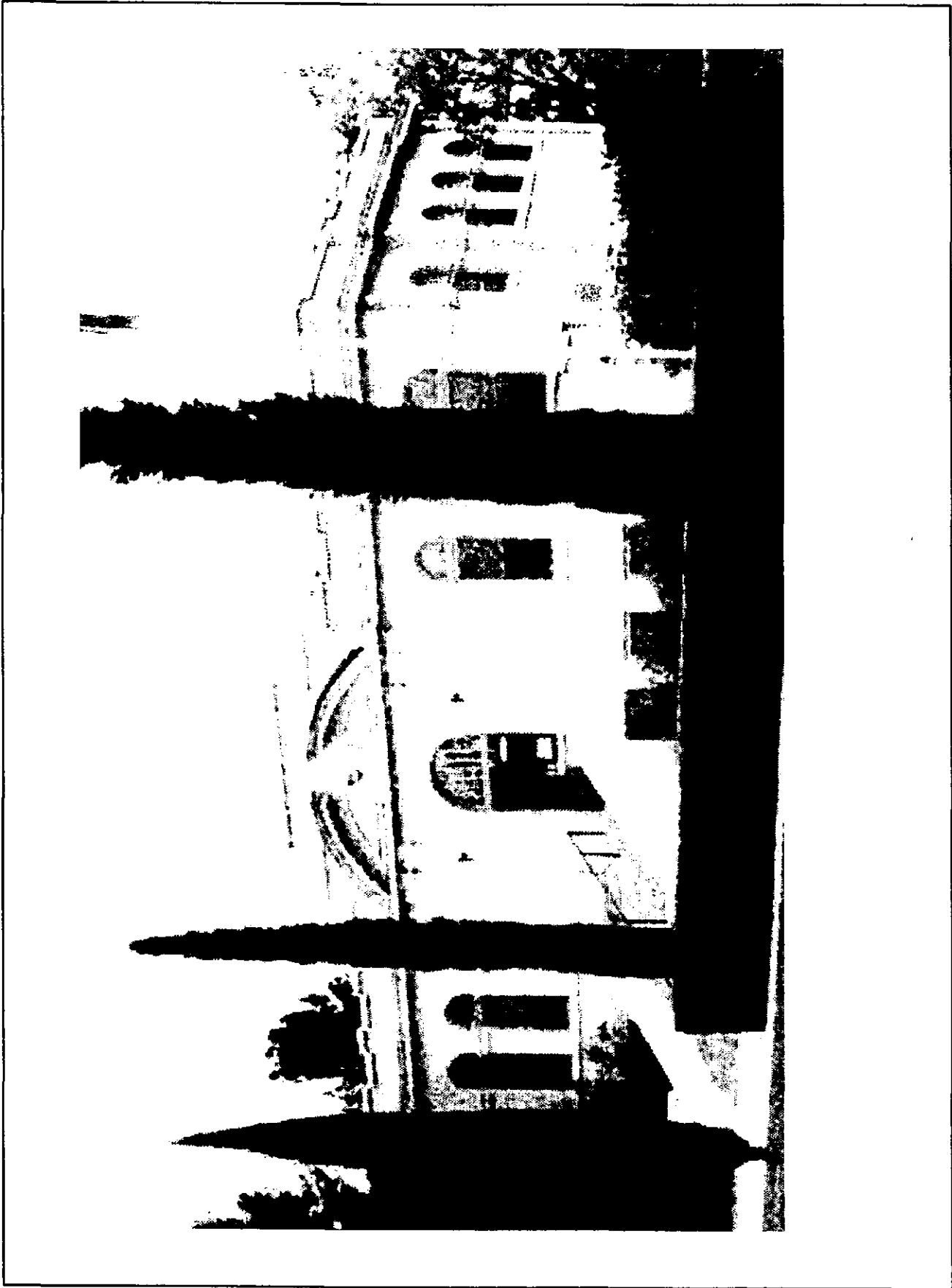




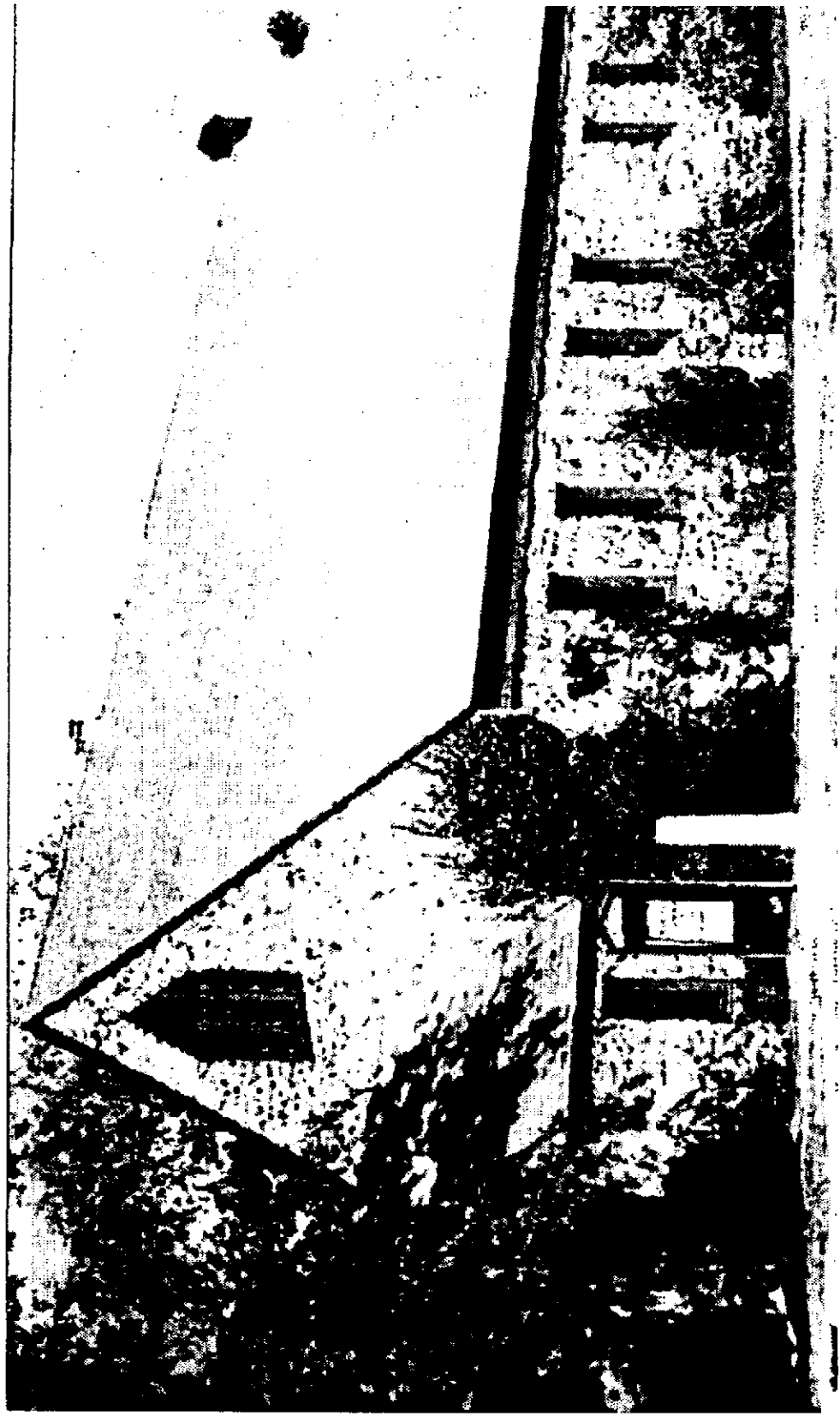
① San Timento Canyon Schoolhouse (1890)



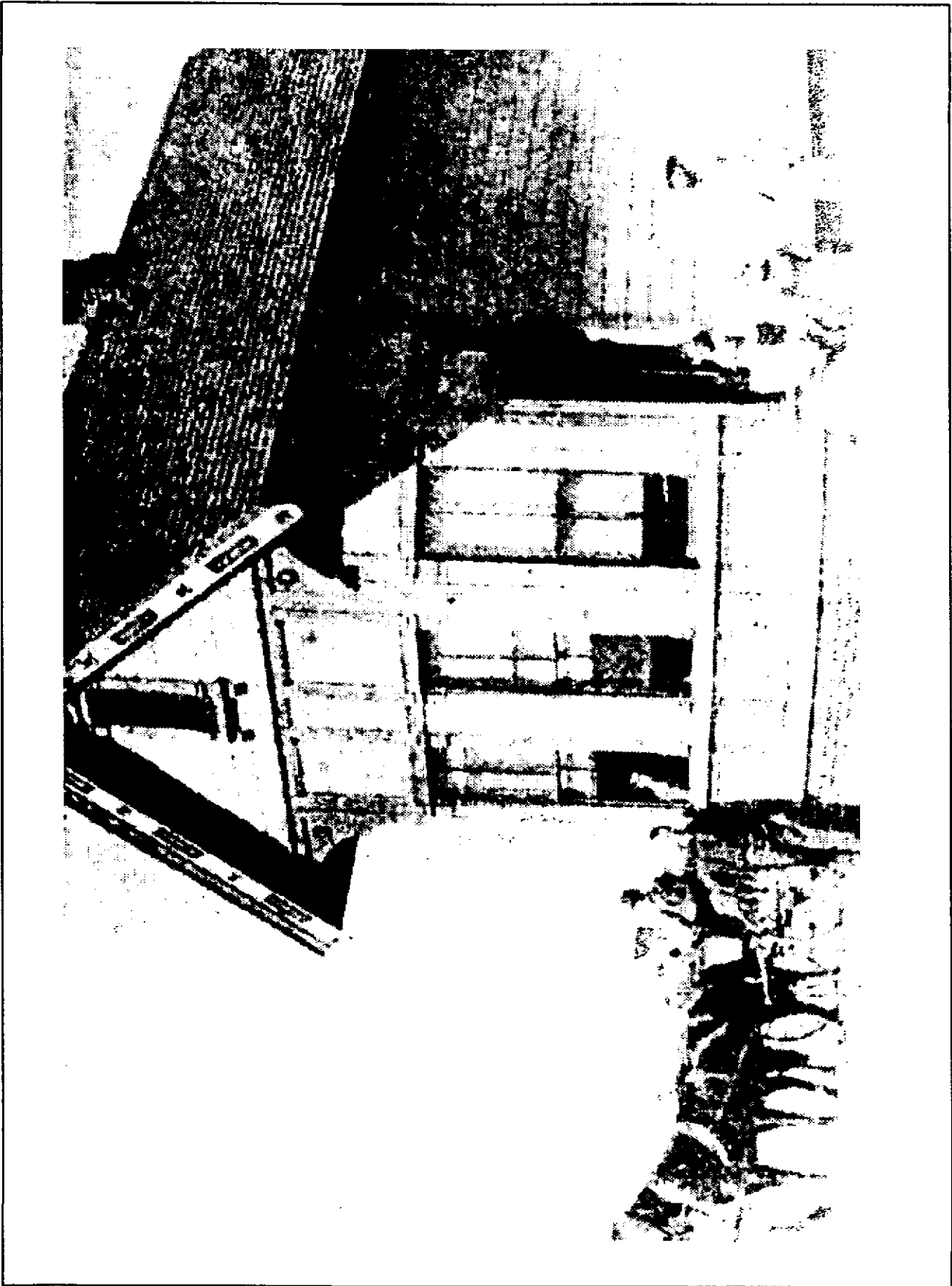
② Wellwood School (1921)



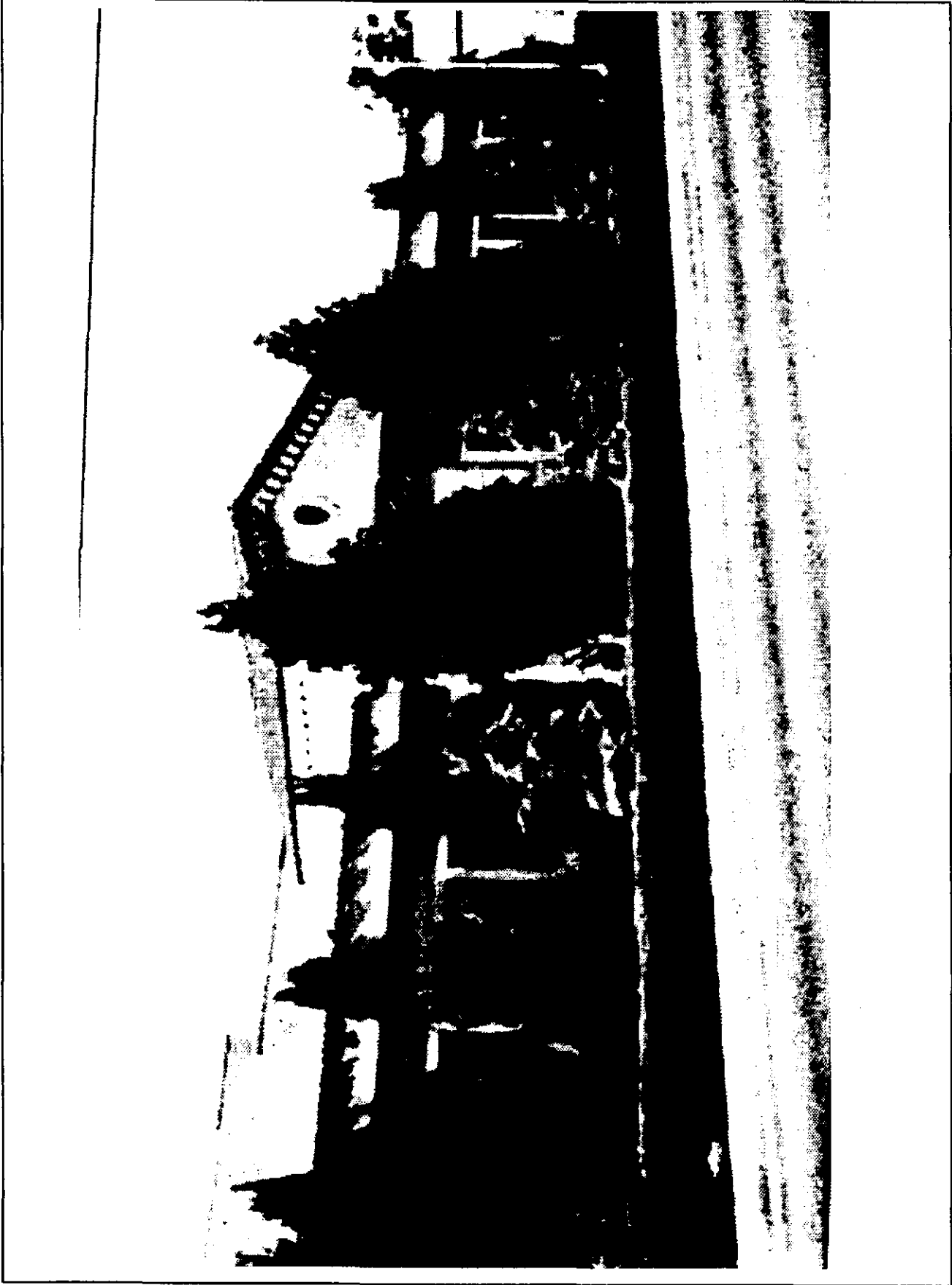
③ Beaumont Library (1914)



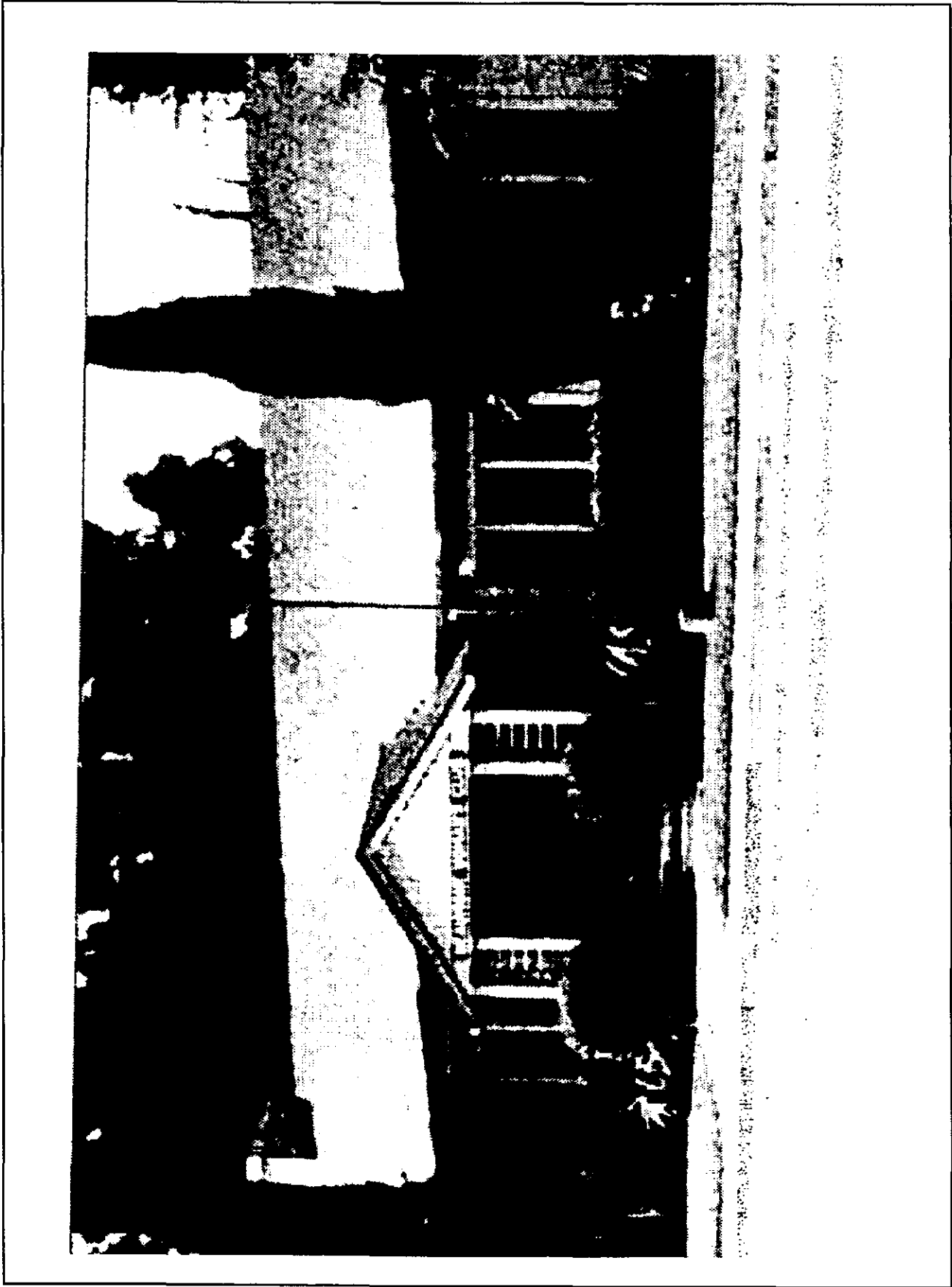
④ Presbyterian Church (1936)



⑤ McCoy House (1885)



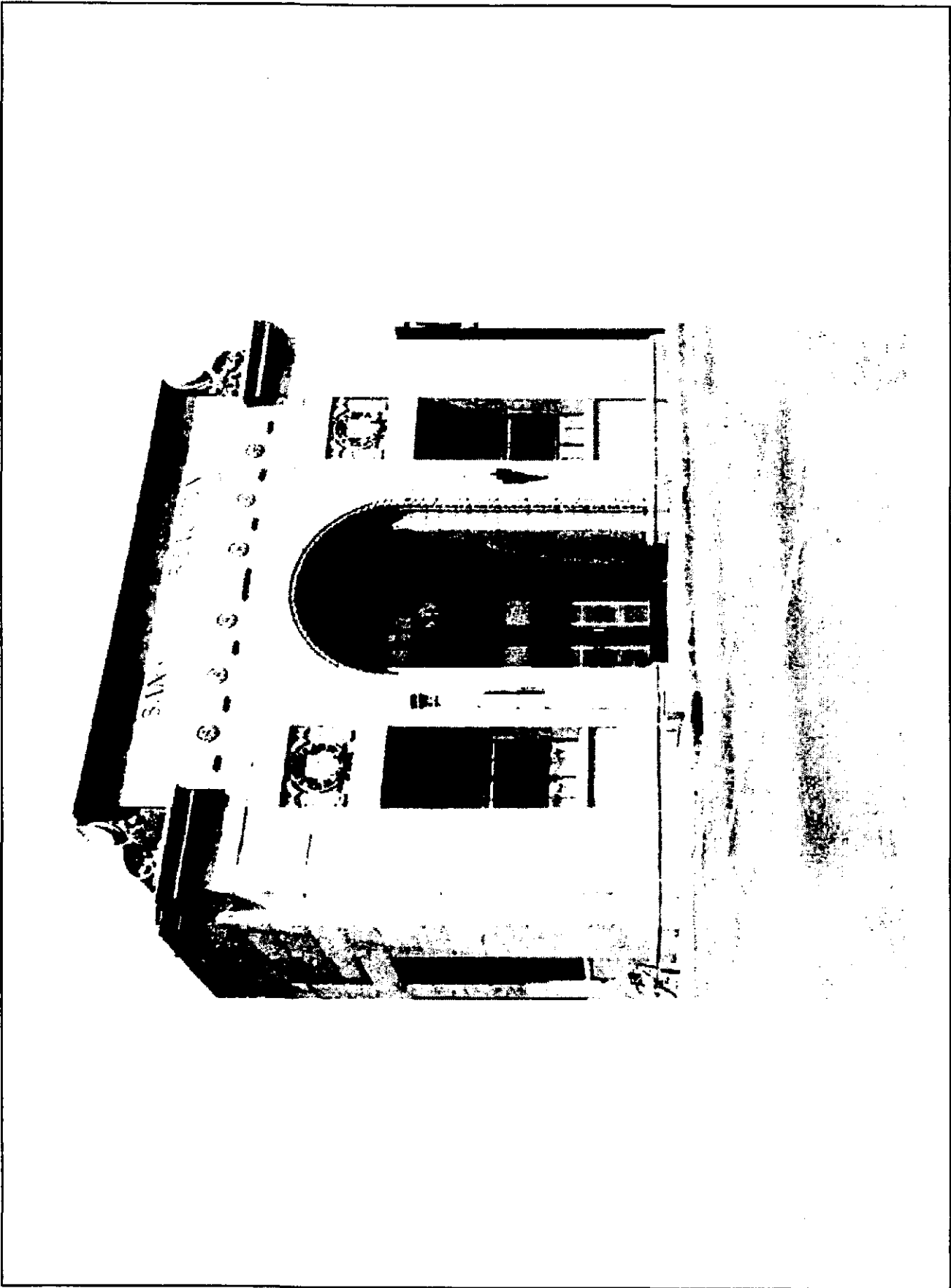
⑥ Beaumont High School



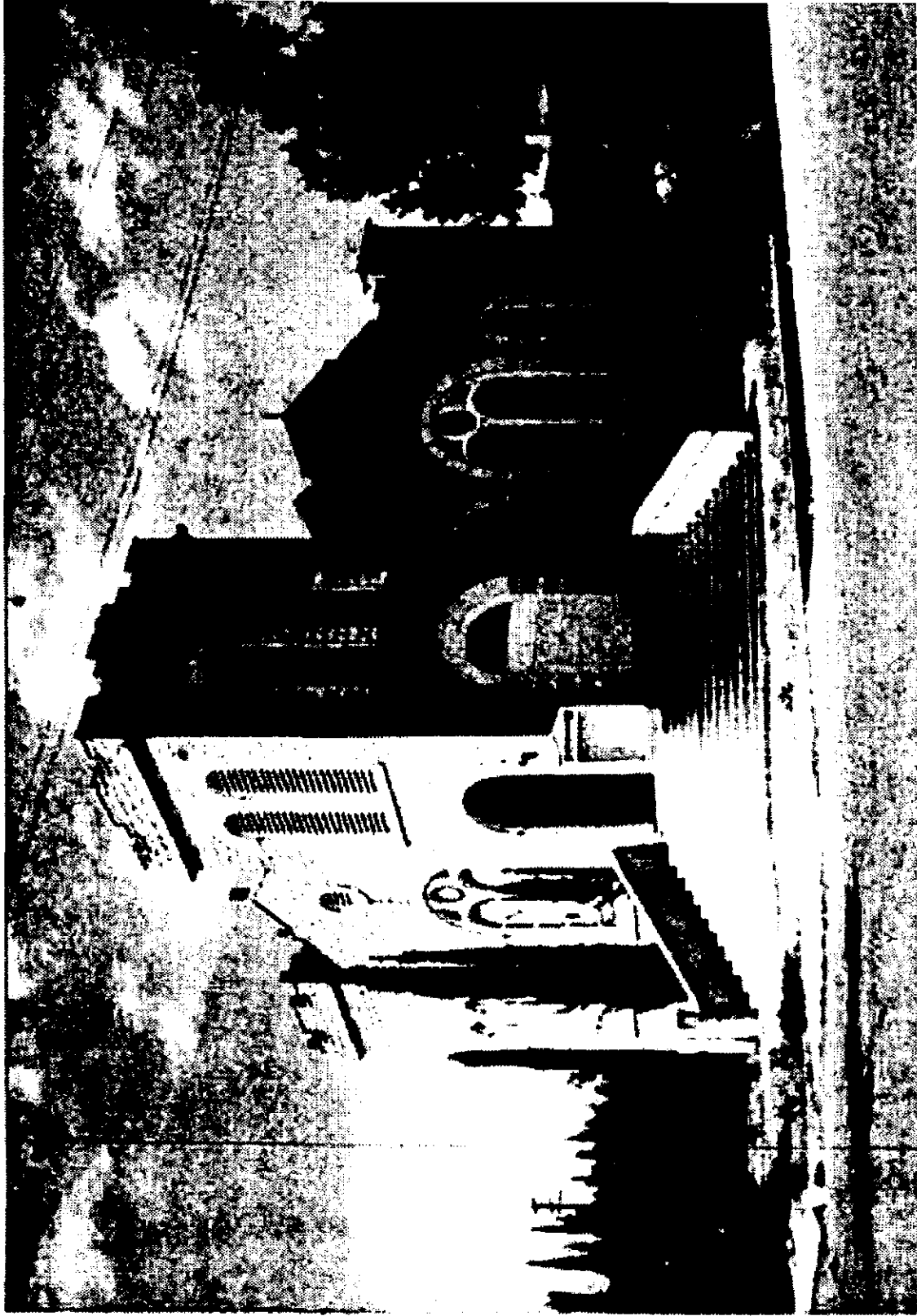
⑦ Beaumont Women's Club (1916)



⑧ Bogart House



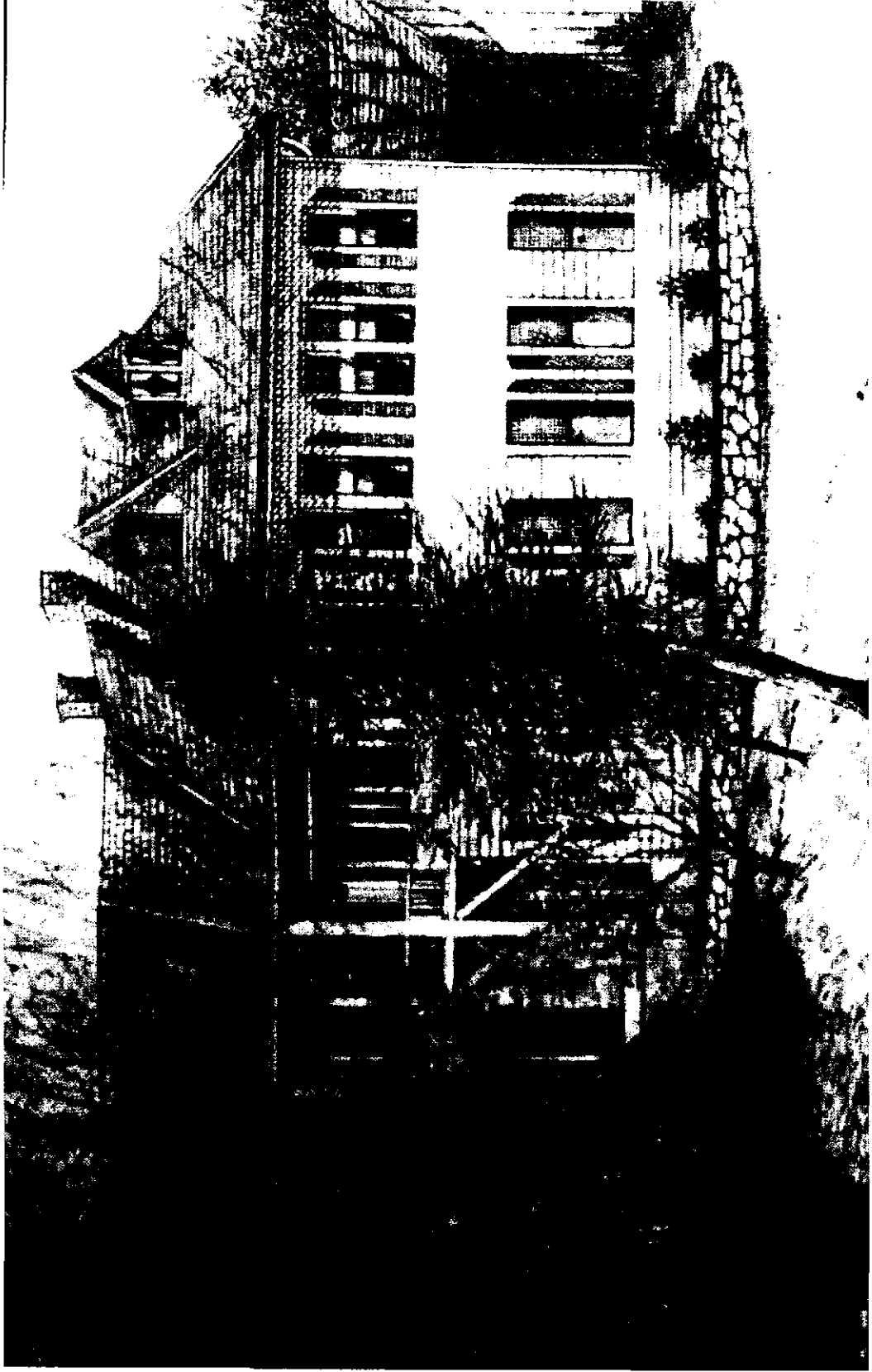
⑨ Bank of Beaumont (1923)



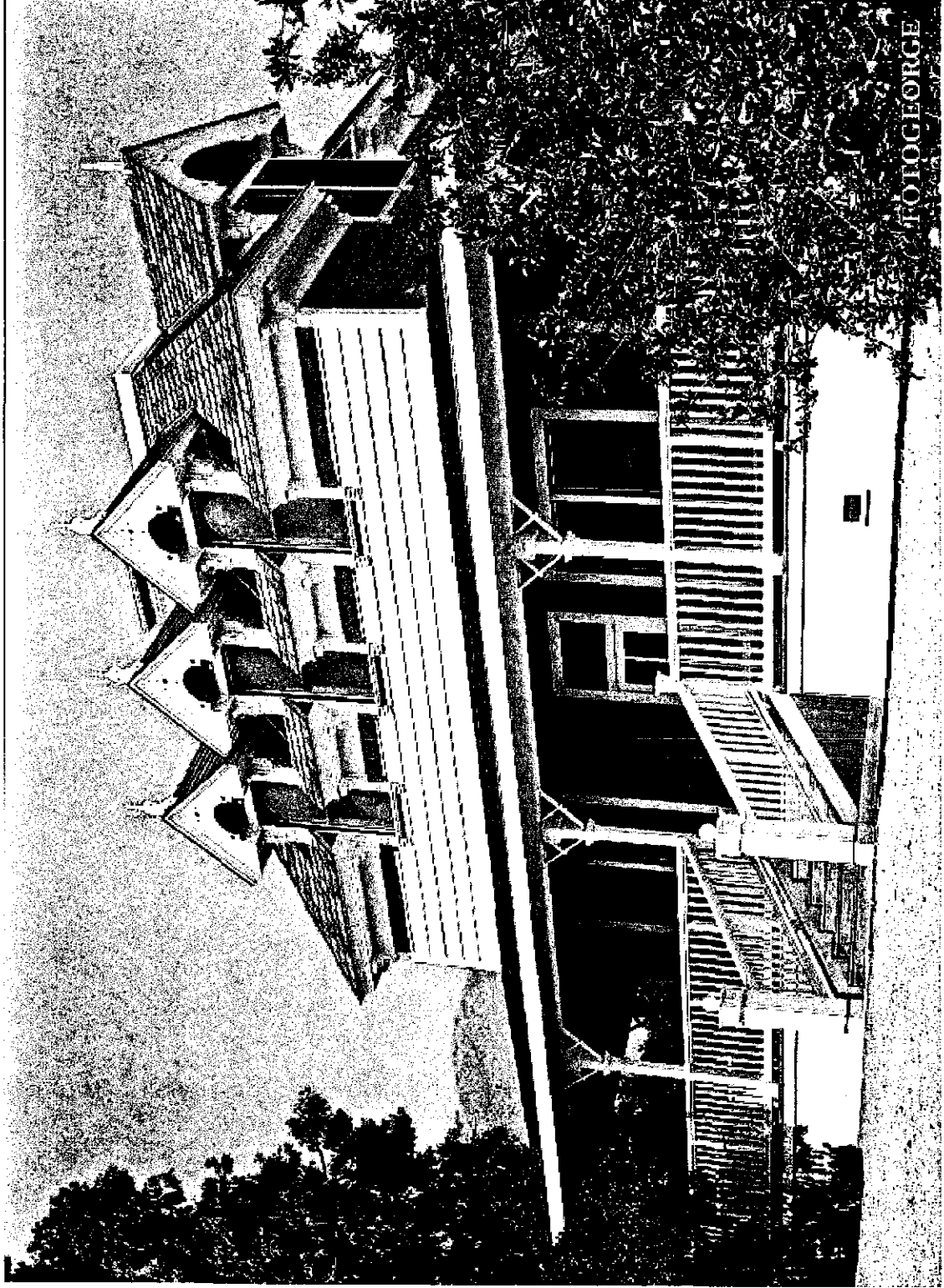
⑩ Episcopal Church (1885)



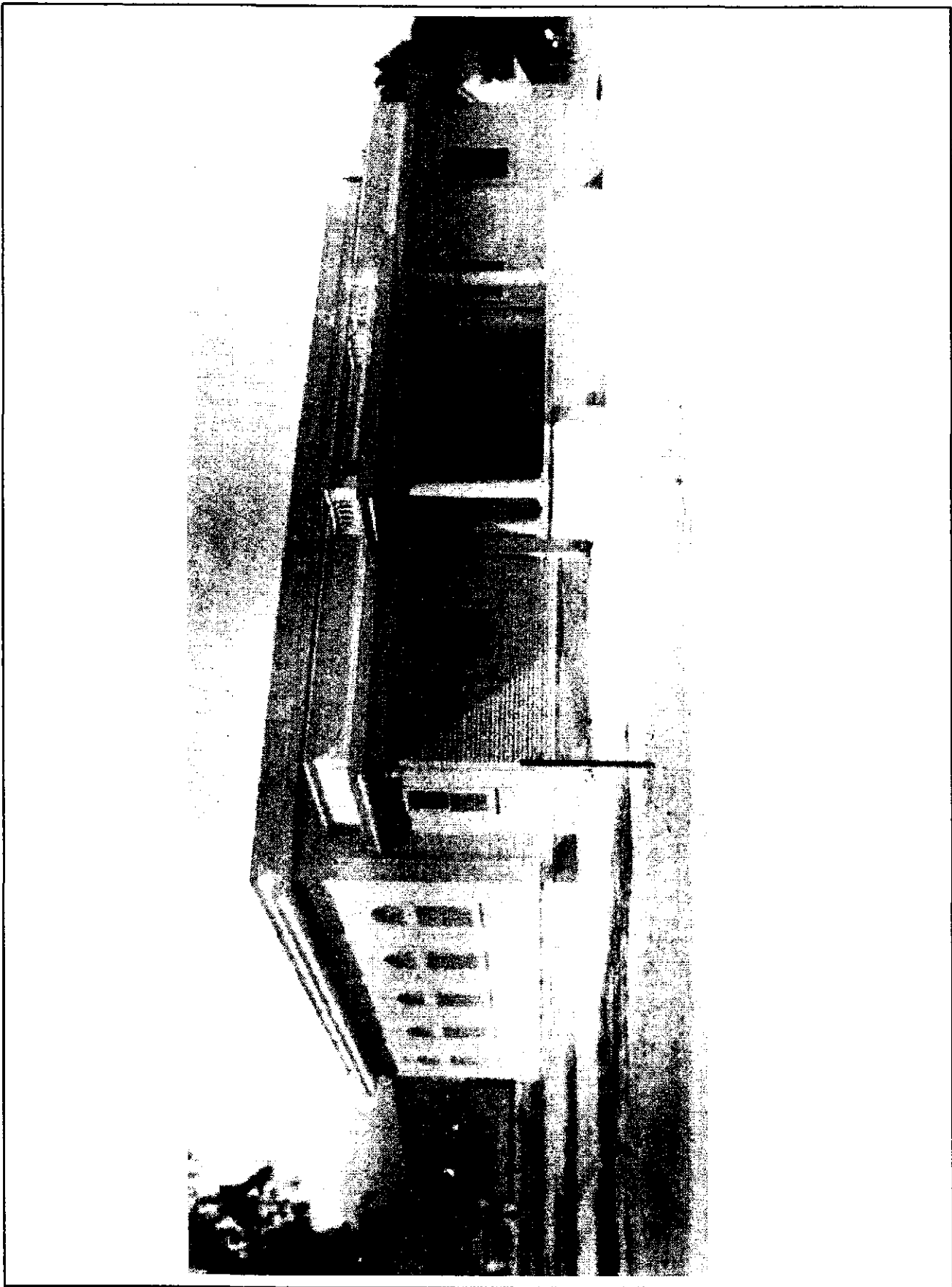
⑪ Weaver Adobe (1832)



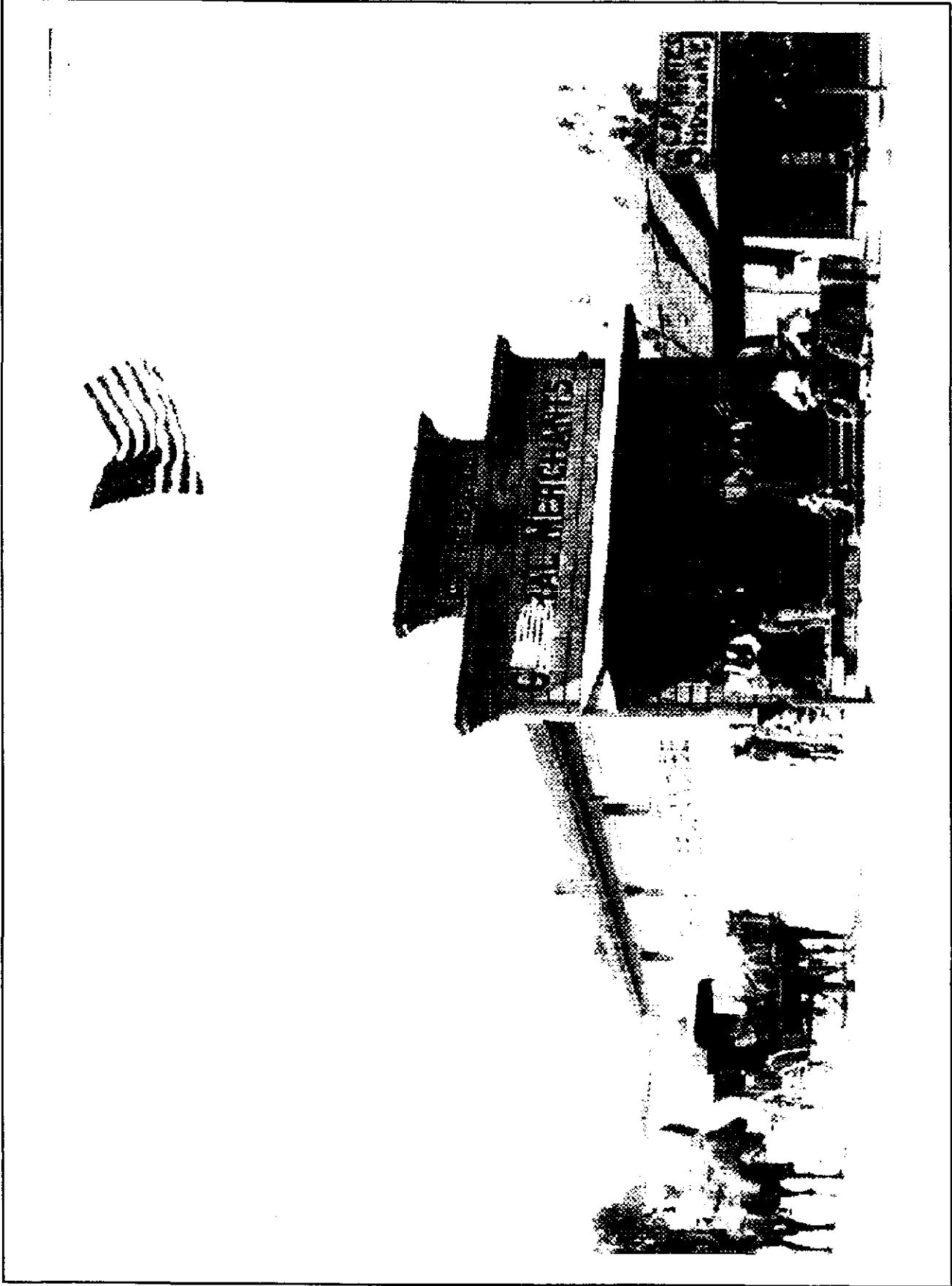
⑫ Highland Springs (c.1878)



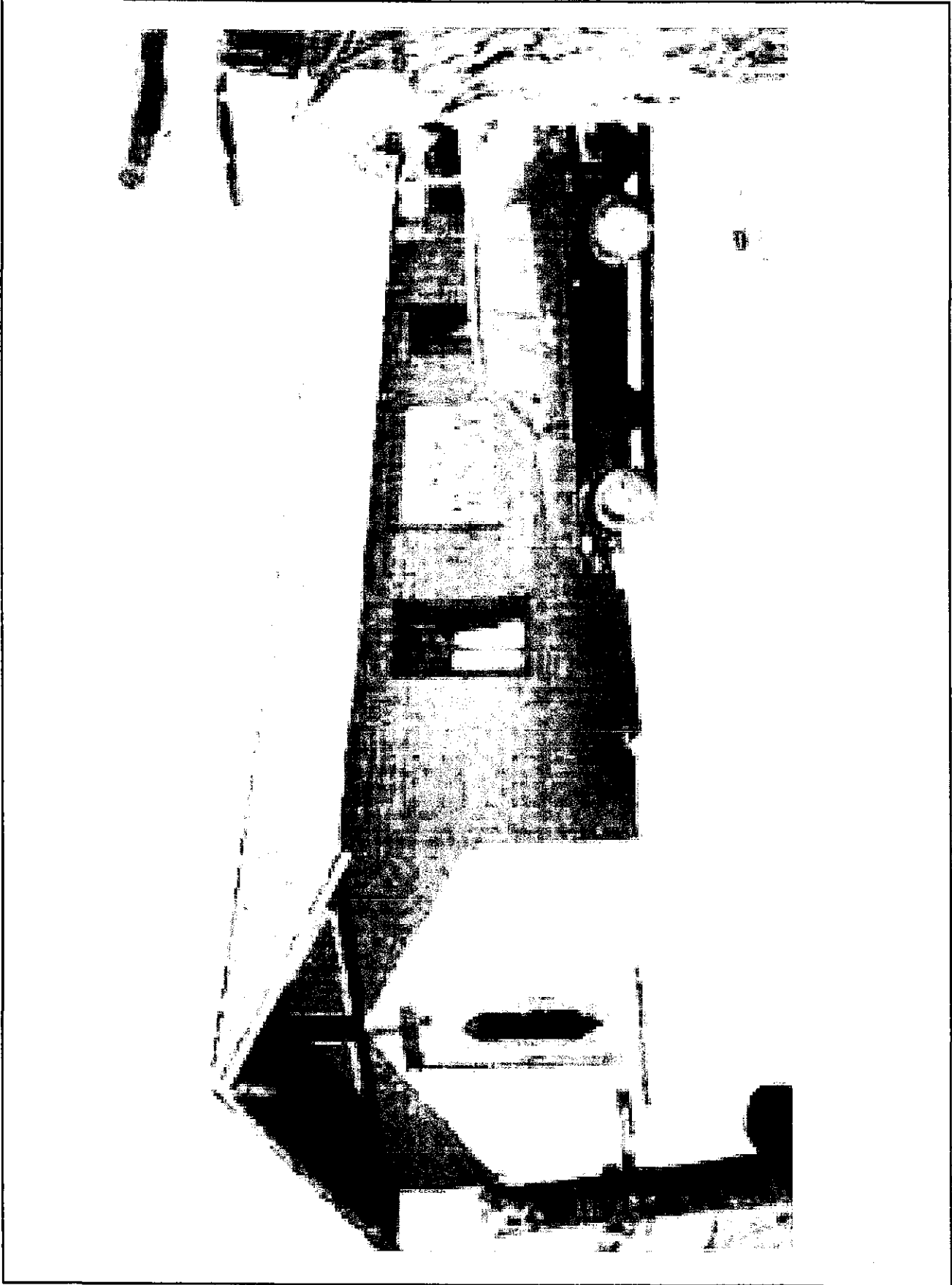
⑬ Gilman Ranch (c. 1869)



⑭ Banning Woman's Club (1915)



⑮ Reid Building (1884)



16 Malki Museum

Historical Site Name and Date of Construction	Historical Site Assessor Parcel Number (APN)	Historical Site – Location
<b>BANK OF BEAUMONT - 1923</b>	<b>417-063-011</b>	Northeast corner of Fifth Avenue and Egan Avenue.
<b>BANNING WOMAN'S CLUB - Not Available</b>	<b>540-163-007</b>	Interstate 10 to Eighth Street, north to Ramsey Street, east to Fourth Street, north to Hays Street, east to 175 West Hays in Banning.
<b>BEAUMONT HIGH SCHOOL - 1909</b>	<b>418-061-013</b>	550 East Sixth Street
<b>BEAUMONT LIBRARY - 1911</b>	<b>418-081-016</b>	Southeast corner of Eighth Street and California Avenue.
<b>BEAUMONT PRESBYTERIAN ROCK CHURCH - 1934</b>	<b>418-071-006</b>	Northeast corner of Seventh Street and Euclid Avenue.
<b>BEAUMONT WOMAN'S CLUB - 1916</b>	<b>418-073-006</b>	Northeast corner of Sixth Street and Euclid Avenue.
<b>BOGART HOME – approx. 1924</b>	<b>418-092-031</b>	Euclid Avenue, one block north from Fifth Street.
<b>COPLIN HOUSE - Not Available</b>	<b>541-181-029</b>	Interstate 10 to Eighth Street, north to Ramsey Street, east to San Geronio Avenue, south to 12 South San Geronio Avenue in Banning.
<b>EPISCOPAL CHURCH - 1885</b>	<b>417-052-007</b>	Northwest corner of Egan and Seventh Streets.
<b>GILMAN RANCH - Not Available</b>	<b>535-070-023</b>	Interstate 10 to Eighth Street, north to Wilson Street, west on Wilson Street to the Ranch entrance at 16 <sup>th</sup> Street.

Historical Site Name and Date of Construction	Historical Site Assessor Parcel Number (APN)	Historical Site – Location
<b>HIGHLAND SPRINGS - 1884</b>	<b>408-040-004</b>	Interstate 10 to Highland Springs Avenue, north about five miles to the resort.
<b>MCCOY HOUSE – late 1800's</b>	<b>418-084-003</b>	668 Edgar Avenue in Beaumont.
<b>REID BUILDING - Not Available</b>	<b>541-181-008</b>	Interstate 10 to Eighth Street, north to Livingston Street, east to San Gorgonio Avenue, NE corner in Banning.
<b>SAAHATAPA – (1830 – 1863)</b>	<b>not available</b>	Interstate 10 to the Brookside Rest Area, approximately one mile east of Cherry Valley Road, Marker only
<b>SAN TIMOTEO CANYON SCHOOLHOUSE - 1886</b>	<b>413-420-005</b>	State Route 60 to Redlands Blvd., north to San Timoteo Canyon Road, east to site.
<b>WEAVER ADOBE - Not Available</b>	<b>403-261-024</b>	Interstate 10 to Beaumont Avenue, north to Vineland Street, east to Avenida Miravilla, to 10055 Avenida Miravilla.
<b>WELLWOOD SCHOOL - Not Available</b>	<b>417-051-004</b>	Northwest corner of Seventh Street and Wellwood Avenue.
<b>MALKI MUSEUM - 1965</b>	<b>531-150-044</b>	West of Fields Road, 1.5 miles north of Interstate 10 freeway.