

855A
SUBMITTAL TO THE BOARD OF SUPERVISORS
COUNTY OF RIVERSIDE, STATE OF CALIFORNIA



FROM: County Counsel

SUBMITTAL DATE: October 8, 2008

SUBJECT: Ordinance No. 348.4612

RECOMMENDED MOTION: That the Board of Supervisors adopt Ordinance No. 348.4612 amending the zoning in the Rancho California Area shown on Map No. 2.2290 Change of Zone Case No. 7005.

BACKGROUND: Change of Zone Case No. 7005 was tentatively approved by the Board of Supervisors on May 8, 2007.

JOE RANK
County Counsel

DAVID H. K. HUFF

C.E.O. RECOMMENDATION:

APPROVE

BY:
Tina Grande

County Executive Office Signature

Policy

Consent

Department Recommendation:
Per Executive Office:

Prev. Agn. ref.

Dist. THIRD

AGENDA NO.

1 ORDINANCE NO. 348.4612

2 AN ORDINANCE OF THE COUNTY OF RIVERSIDE
3 AMENDING ORDINANCE NO. 348 RELATING TO ZONING
4

5 The Board of Supervisors of the County of Riverside Ordains as Follows:

6 Section 1. Section 4.1 of Ordinance No. 348, and official Zoning Plan Map No. 2, as
7 amended, are further amended by placing in effect in the Rancho California Area, the zone or zones as
8 shown on the map entitled "Change of Official Zoning Plan Amending Ordinance No. 348, Map No.
9 2.2290, Change of Zone Case No. 7005" which map is made a part of this ordinance.

10 Section 2. This ordinance shall take effect 30 days after its adoption.

11 BOARD OF SUPERVISORS OF THE COUNTY
12 OF RIVERSIDE, STATE OF CALIFORNIA

13 By: _____
14 Chairman, Board of Supervisors

15 ATTEST:
16 Clerk of the Board

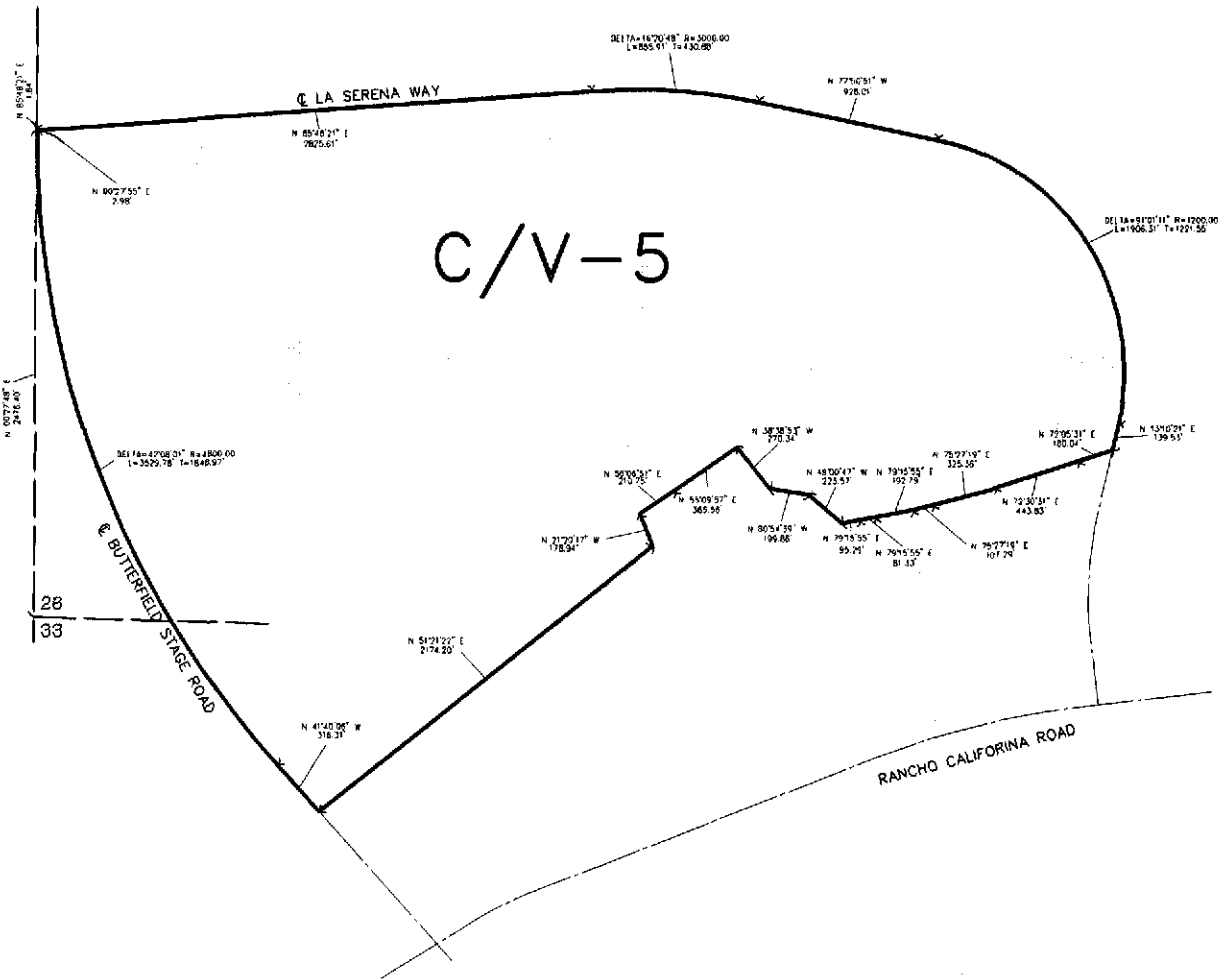
17
18 By: _____
19 Deputy

20 (SEAL)

21
22 APPROVED AS TO FORM
23 October 9, 2008

24
25 By: 
26 DAVID H.K. HUFF
27 Deputy County Counsel

RANCHO CALIFORNIA AREA
 SEC. 27, 28, 33 T.7S., R.2W.

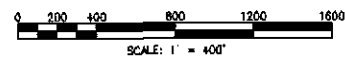


LEGEND

C/V-5 CITRUS VINEYARD, 5 ACRE MINIMUM

MAP NO. 2.2290
 CHANGE OF OFFICIAL ZONING PLAN
 AMENDING
 MAP NO. 2, ORDINANCE NO. 348
 CHANGE OF ZONE CASE NO. 7005
 ADOPTED BY ORDINANCE NO. 348.4612
 OCTOBER 21, 2008

RIVERSIDE COUNTY BOARD OF SUPERVISORS



ASSESSORS'S PARCEL NUMBER (APN): 943-060-004/012,
 943-070-003, 943-260-027