

SUBMITTAL TO THE BOARD OF SUPERVISORS
COUNTY OF RIVERSIDE, STATE OF CALIFORNIA

263A



FROM: County Counsel

SUBMITTAL DATE: October 29, 2008

SUBJECT: Ordinance No. 348.4624

RECOMMENDED MOTION: That the Board of Supervisors adopt Ordinance No. 348.4624 amending the zoning in the Rancho California Area shown on Map No. 2.2296 Change of Zone Case No. 7513.

BACKGROUND: Change of Zone Case No. 7513 was tentatively approved by the Board of Supervisors on September 30, 2008.

Michelle Clark
JOE RANK *Michelle Clark for*
County Counsel

C.E.O. RECOMMENDATION:

APPROVE

BY *Tina Grande*
Tina Grande

County Executive Office Signature

Policy
 Policy

Consent
 Consent

Department Recommendation:
Per Executive Office:

Prev. Agn. ref.

Dist. FIRST

AGENDA NO.

1 ORDINANCE NO. 348.4624

2 AN ORDINANCE OF THE COUNTY OF RIVERSIDE
3 AMENDING ORDINANCE NO. 348 RELATING TO ZONING
4

5 The Board of Supervisors of the County of Riverside Ordains as Follows:

6 Section 1. Section 4.1 of Ordinance No. 348, and official Zoning Plan Map No. 2, as
7 amended, are further amended by placing in effect in the Rancho California Area, the zone or zones as
8 shown on the map entitled "Change of Official Zoning Plan Amending Ordinance No. 348, Map No.
9 2.2296, Change of Zone Case No. 7513" which map is made a part of this ordinance.

10 Section 2. This ordinance shall take effect 30 days after its adoption.

11 BOARD OF SUPERVISORS OF THE COUNTY
12 OF RIVERSIDE, STATE OF CALIFORNIA


13 By: _____
14 Chairman, Board of Supervisors

15 ATTEST:
16 Clerk of the Board

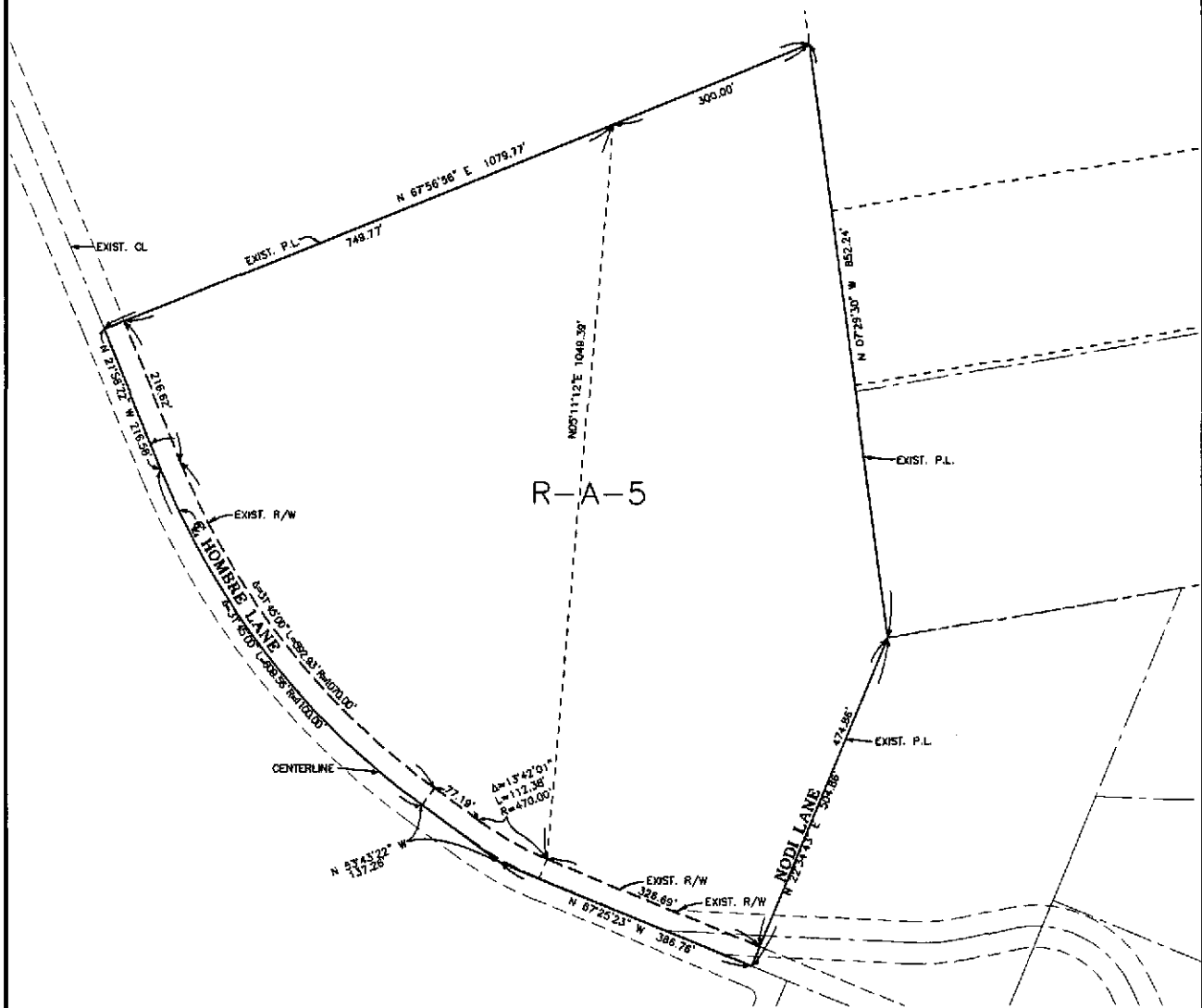
17
18 By: _____
19 Deputy

20 (SEAL)

21
22 APPROVED AS TO FORM
23 November 21, 2008

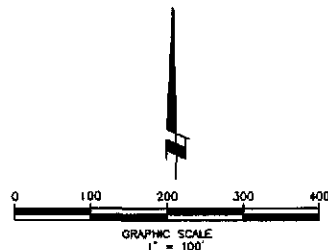
24
25 By: 
26 MICHELLE CLACK
27 Deputy County Counsel

RANCHO CALIFORNIA AREA
 POR. SEC. 19 30, T.7 S., R.4 W.



LEGEND

R-A-5 RESIDENTIAL AGRICULTURAL
 5.0 A.C. MINIMUM LOT AREA



MAP NO. 2.2296

CHANGE OF OFFICIAL ZONING PLAN

AMENDING

MAP NO. 2 ORDINANCE NO. 348

CHANGE OF ZONE CASE NO. 7513

ADOPTED BY ORDINANCE NO. 348.4624

NOVEMBER 18, 2008

RIVERSIDE COUNTY BOARD OF SUPERVISORS

APN 932-310-015-4
 APN 932-310-016-5