

SUBMITTAL TO THE BOARD OF SUPERVISORS
COUNTY OF RIVERSIDE, STATE OF CALIFORNIA

255A



FROM: County Counsel

SUBMITTAL DATE: October 23, 2008

SUBJECT: Ordinance No. 348.4615

RECOMMENDED MOTION: That the Board of Supervisors adopt Ordinance No. 348.4615 amending the zoning in the Lower Coachella Valley District shown on Map No. 41.075 Change of Zone Case No. 7209.

BACKGROUND: Change of Zone Case No. 7209 was tentatively approved by the Board of Supervisors on September 16, 2008.

JOE RANK
County Counsel

Minh C. Tran

C.E.O. RECOMMENDATION:

APPROVE

BY:

County Executive Office Signature

Tina Grande

Policy
 Policy

Consent
 Consent

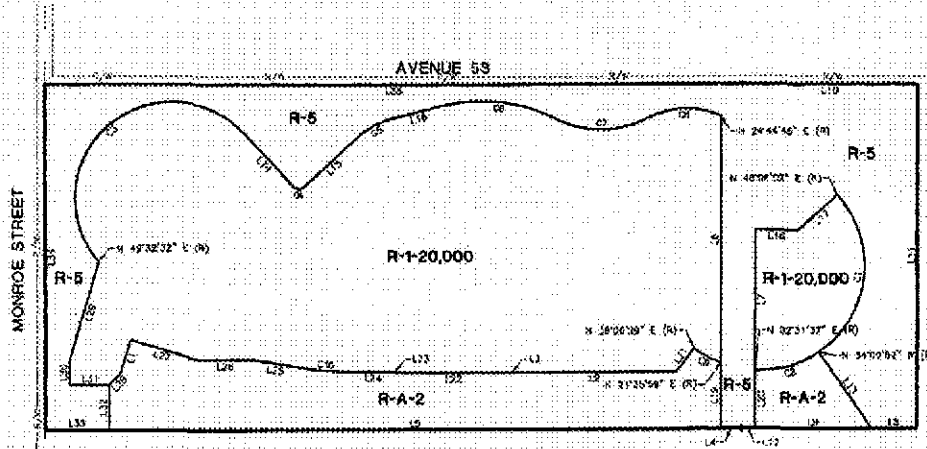
Department Recommendation:
Per Executive Office:

Prev. Agn. ref.

Dist. FOURTH

AGENDA NO.

SEC. 11, T. 6 S., R. 7 E., S.B.B. & M



NO.	BEARING	LENGTH
L1	N 47°32'32" E (R)	113.21
L2	S 89°27'22" W	142.82
L3	N 80°21'13" W	17.20
L4	N 89°23'45" W	41.27
L5	S 89°23'45" W	231.57
L6	S 89°23'45" W	262.57
L7	S 89°23'45" W	103.74
L8	S 89°23'45" W	222.22
L9	S 89°23'45" W	222.22
L10	N 89°23'45" W	64.57
L11	N 89°23'45" W	131.14
L12	N 89°23'45" W	30.52
L13	N 89°23'45" W	113.21
L14	S 89°23'45" W	278.58
L15	N 77°17'07" W	213.97
L16	S 22°01'51" W	189.10
L17	S 89°23'45" W	222.22
L18	S 89°23'45" W	222.22
L19	S 89°23'45" W	222.22
L20	S 89°23'45" W	222.22
L21	S 89°23'45" W	222.22
L22	S 89°23'45" W	222.22
L23	S 89°23'45" W	222.22
L24	S 89°23'45" W	222.22
L25	S 89°23'45" W	222.22
L26	S 89°23'45" W	222.22
L27	N 77°17'07" W	213.97
L28	N 89°23'45" W	222.22
L29	N 89°23'45" W	222.22
L30	N 89°23'45" W	222.22
L31	N 89°23'45" W	222.22
L32	N 89°23'45" W	222.22
L33	N 89°23'45" W	222.22
L34	N 89°23'45" W	222.22
L35	N 89°23'45" W	222.22
L36	N 89°23'45" W	222.22
L37	N 89°23'45" W	222.22
L38	N 89°23'45" W	222.22
L39	N 89°23'45" W	222.22
L40	N 89°23'45" W	222.22
L41	N 89°23'45" W	222.22
L42	N 89°23'45" W	222.22
L43	N 89°23'45" W	222.22
L44	N 89°23'45" W	222.22
L45	N 89°23'45" W	222.22
L46	N 89°23'45" W	222.22
L47	N 89°23'45" W	222.22
L48	N 89°23'45" W	222.22
L49	N 89°23'45" W	222.22
L50	N 89°23'45" W	222.22

NO.	PC/PT	RADIUS	LENGTH	INCHES
C1	271°22'	120.00	183.14	1.5250'
C2	321°52'	120.00	183.14	1.5250'
C3	150°41'	175.00	111.31	0.9275'
C4	222°22'	222.22	222.22	1.8518'
C5	211°02'	175.00	266.67	2.2222'
C6	34°11'	175.00	266.67	2.2222'
C7	157°17'	300.00	300.00	2.5000'
C8	28°24'	300.00	300.00	2.5000'
C9	28°24'	300.00	135.00	1.1250'



LEGEND

- R-1-20,000 ONE-FAMILY DWELLINGS - 20,000 SQUARE FEET MINIMUM
- R-5 OPEN AREA COMBINING ZONE RESIDENTIAL DEVELOPMENTS
- R-A-2 RESIDENTIAL AGRICULTURAL - 2 ACRE MINIMUM

MAP NO. 41,075

**CHANGE OF OFFICIAL ZONING PLAN
LOWER COACHELLA VALLEY**

DISTRICT

CHANGE OF ZONE CASE NO. 07209
AMENDING ORDINANCE NO. 348
ADOPTED BY ORDINANCE NO. 348.4615

NOVEMBER 18, 2008

APN: 767-230-001
APN: 767-230-002
APN: 767-230-003 RIVERSIDE COUNTY BOARD OF SUPERVISORS

RIVERSIDE COUNTY BOARD OF SUPERVISORS, 1000 STATE STREET, RIVERSIDE, CALIFORNIA 92501