

SUBMITTAL TO THE BOARD OF SUPERVISORS
COUNTY OF RIVERSIDE, STATE OF CALIFORNIA

259A



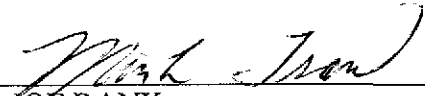
FROM: County Counsel

SUBMITTAL DATE: October 23, 2008

SUBJECT: Ordinance No. 348.4619


RECOMMENDED MOTION: That the Board of Supervisors adopt Ordinance No. 348.4619 amending the zoning in the Bermuda Dunes District shown on Map No. 30.093 Change of Zone Case No. 7472.

BACKGROUND: Change of Zone Case No. 7472 was tentatively approved by the Board of Supervisors on May 6, 2008.


Minh C. Tran *for*
JOE RANK
County Counsel

C.E.O. RECOMMENDATION:

APPROVE

BY 
Tina Grande

County Executive Office Signature

Policy
 Policy

Consent
 Consent

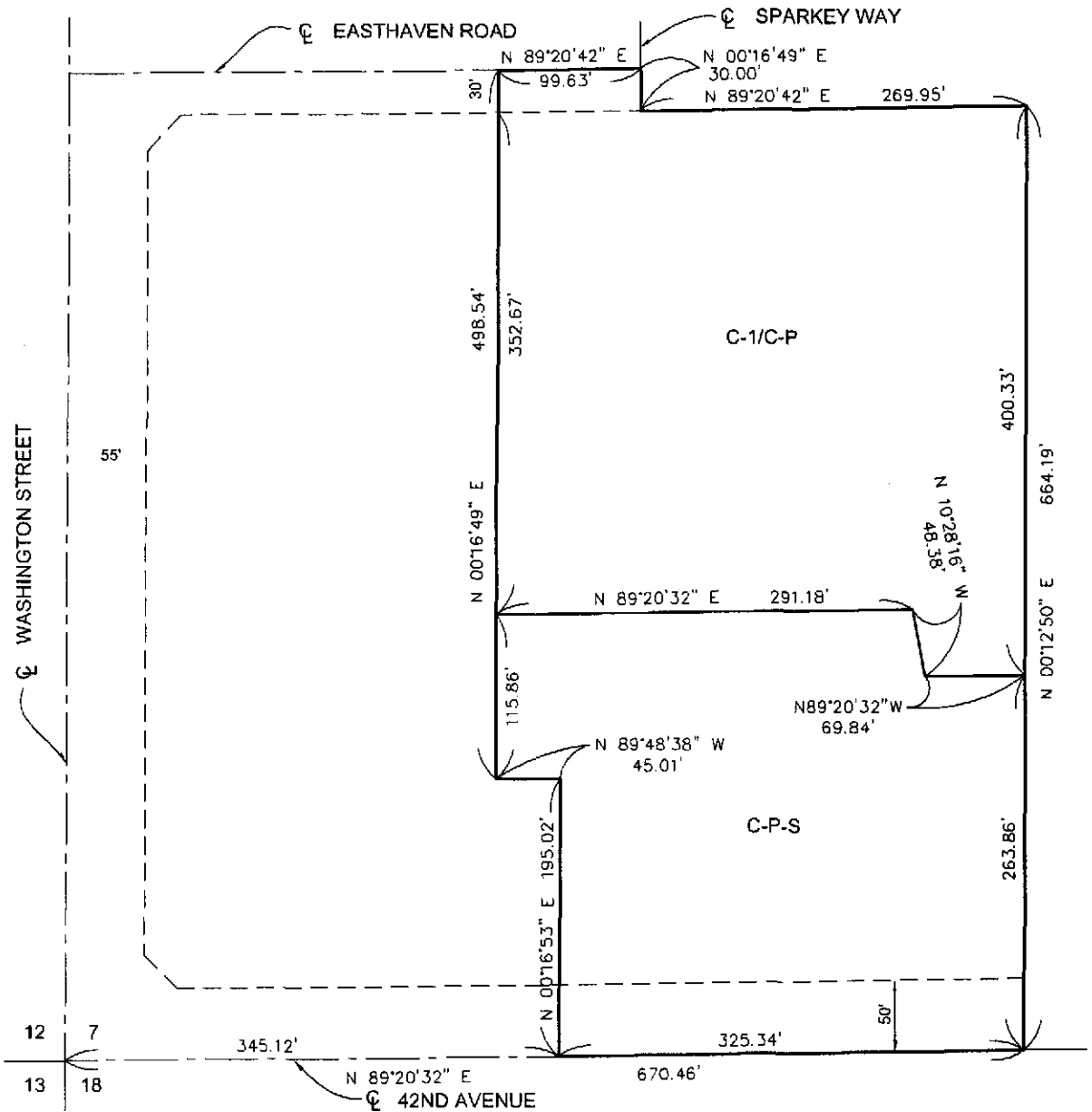
Department Recommendation:
Per Executive Office:

Prev. Agn. ref.

Dist. FOURTH

AGENDA NO.

SECTION 7, T. 5 S., R. 7 E., S.B.B. & M.



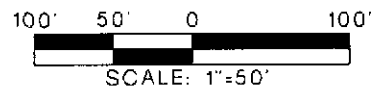
LEGEND

- C-P-S SCENIC HIGHWAY COMMERCIAL
- C-1/C-P GENERAL COMMERCIAL

MAP NO. 30.093
CHANGE OF OFFICIAL ZONING PLAN
BERMUDA DUNES DISTRICT

CHANGE OF ZONE CASE NO.7472
AMENDING ORDINANCE NO. 348
ADOPTED BY ORDINANCE NO.348.4619

NOVEMBER 18, 2008
RIVERSIDE COUNTY BOARD OF SUPERVISORS



A.P.N.: 607-130-010