

**SUBMITTAL TO THE BOARD OF SUPERVISORS  
COUNTY OF RIVERSIDE, STATE OF CALIFORNIA**

204B



**FROM:** TLMA - Transportation Department

**SUBMITTAL DATE:**  
November 7, 2008

**SUBJECT:** Tract 29093 (68<sup>th</sup> St. and a portion of 65<sup>th</sup> St.)  
A Schedule "A" Subdivision in the Mira Loma Area  
**Extension of Time Agreements**

**RECOMMENDED MOTION:** That the Board approve the attached agreements (which grant an extension of time for twelve months to complete improvements).

**BACKGROUND:** On May 22, 2007, the Board entered into agreements with WL Homes, LLC a Delaware LLC for the improvement of indicated streets within the above referenced subdivision. Accompanying these agreements were faithful performance securities posted by Seaboard Surety Company as follows:

\$42,950 - Bond #410322 for the completion of street improvements

The developer requests an extension of time for the completion of this project. Our records indicate that this project is approximately 90% completed for streets and utility work. The agreements for the extension of time have been approved by County Counsel.

Juan C. Perez  
Director of Transportation

HS:lf  
Submittals: Vicinity Map  
Road/Drainage Agrmts

REVIEWED BY EXECUTIVE OFFICE  
DATE 11/10/08  
Departmental Concurrents to Grants  
FORM APPROVED COUNTY COUNSEL  
BY: Pamela J. Walls 10/17/08  
DATE  
PAMELA J. WALLS

Policy

Consent

Dept's Recomm.:  
Per Exec. Ofc.:

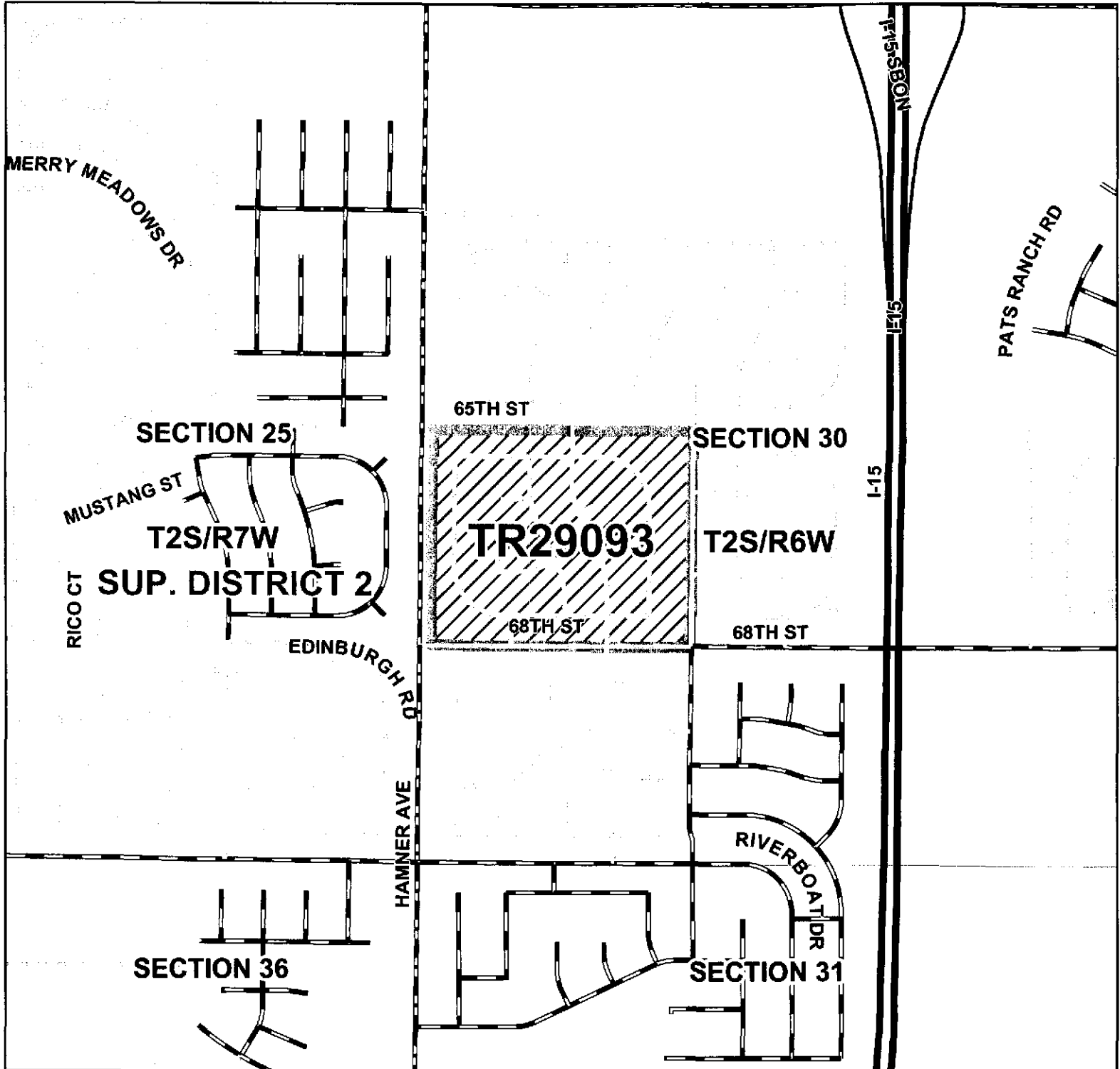
Prev. Agn. Ref. 05/22/07 - 2.7 | District: 2 | Agenda Number:

# Vicinity Map

## Tract 29093



The County of Riverside assumes no warranty or legal responsibility for the information contained on this map. Data and information represented on this map is subject to updates, modifications and may not be complete or appropriate for all purposes. County GIS and other sources should be queried for the most current information. Do not copy or reuse this map.



### Roadway Legend

- |  |                             |             |
|--|-----------------------------|-------------|
| FEDERAL AID INTERSTATE; STATE HIGHWAYS | NON-COUNTY ROAD             | HWY         |
| F.A.S./F.A.U. MAINTAINED               | CITY ROAD                   | INTERCHANGE |
| PAVED SURFACE MAINTAINED               | UNDEFINED                   | INTERSTATE  |
| GRAVELED SURFACE MAINTAINED            | ABANDON                     | OFFRAMP     |
| DIRT SURFACE MAINTAINED                | VACATED                     | ONRAMP      |
| ACCEPTED FOR PUBLIC USE                | CITY OR WILDOMAR MAINTAINED | USHWY       |