

359A

**SUBMITTAL TO THE BOARD OF SUPERVISORS
COUNTY OF RIVERSIDE, STATE OF CALIFORNIA**



FROM: County Counsel

SUBMITTAL DATE: November 10, 2008

SUBJECT: Ordinance No. 348.4627

RECOMMENDED MOTION: That the Board of Supervisors adopt Ordinance No. 348.4627 amending the zoning in the Glen Ivy Area shown on Map No. 2.2298 Change of Zone Case No. 7516.

BACKGROUND: Change of Zone Case No. 7516 was tentatively approved by the Board of Supervisors on November 4, 2008.

Michelle Clark

JOE RANK Michelle Clark
County Counsel

C.E.O. RECOMMENDATION:

APPROVE

BY *Tina Grande*

Tina Grande

County Executive Office Signature

Policy
 Policy

Consent
 Consent

Department Recommendation:
Per Executive Office:

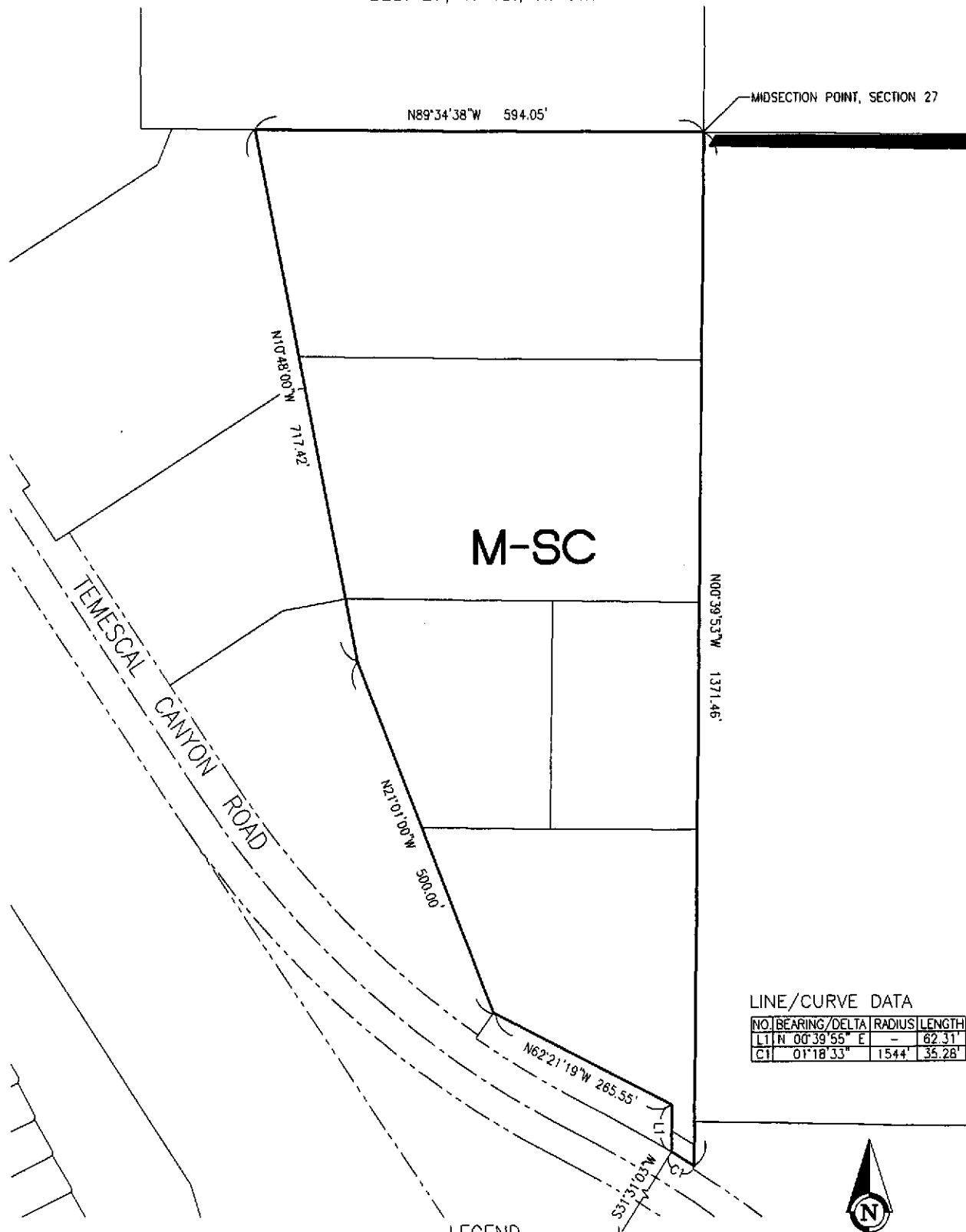
Prev. Agn. ref.

Dist. FIRST

AGENDA NO.

GLEN IVY

SEC. 27, T. 4S., R. 6W.



LINE/CURVE DATA

NO.	BEARING/DELTA	RADIUS	LENGTH
L1	N 00°39'55" E	-	62.31'
C1	01°18'33"	1544'	35.28'

M-SC MANUFACTURING-SERVICE COMMERCIAL

LEGEND



MAP NO. 2.2298
 CHANGE OF OFFICIAL ZONING PLAN
 AMENDING
 MAP NO. 2, ORDINANCE NO. 348
 CHANGE OF ZONE CASE NO. C207516
 ADOPTED BY ORDINANCE NO. 348.4627
 NOVEMBER 25, 2008
 RIVERSIDE COUNTY BOARD OF SUPERVISORS